

RELIGIOUS PROPERTY FOR SALE

24,300± SF TOTAL ON 3.43± AC



9801 COOPER CHURCH DR. LOUISVILLE, KY 40229

ASKING PRICE: ~~\$1,695,000~~ \$1,250,000

PROPERTY HIGHLIGHTS

RELIGIOUS FACILITY

- The facility contains a chapel built in 1900 with a more recent education wing and an auxiliary building which contains a gymnasium. The footprint of these buildings combined is approximately 15,000± SF. The basement adds an additional 7,000± SF.

RESIDENCE

- The 2,300± SF two-story home has 5 bedrooms, 2 baths and an unfinished basement.

PARCEL ID	066102640000
COUNTY	Jefferson
ZONING	Residential Single Family (R4)
# OF BUILDINGS	3
BUILDING SF	22,000± SF Religious Facility 2,300± SF Residence
ACREAGE	3.43 ± AC
PARKING	50+ Paved Spaces

FOR MORE INFORMATION, PLEASE CONTACT:

JOEDY GILLILAND

Broker

502.827.4863

joedy@signalonerealty.com



ADVISEMENT SERVICES PROVIDED BY:

MATT MESSIER, SIOR, CCIM

Partner, Managing Director

407.540.7718

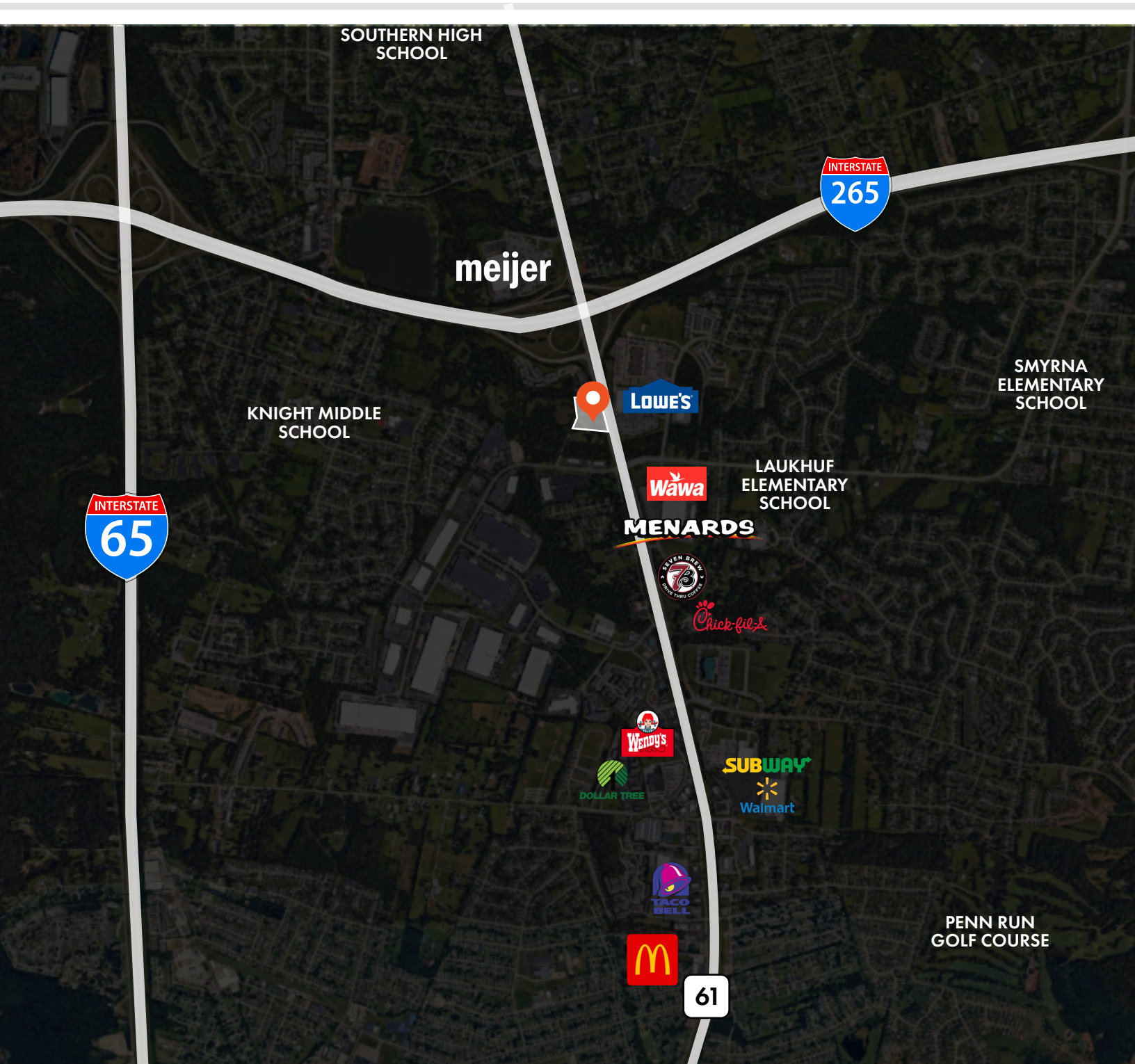
matt.messier@foundrycommercial.com



RELIGIOUS PROPERTY FOR SALE

24,300± SF TOTAL ON 3.43± AC

AERIAL & PROPERTY OUTLINE



FOR MORE INFORMATION, PLEASE CONTACT:

JOEDY GILLILAND
Broker
502.827.4863
joedy@signalonerealty.com



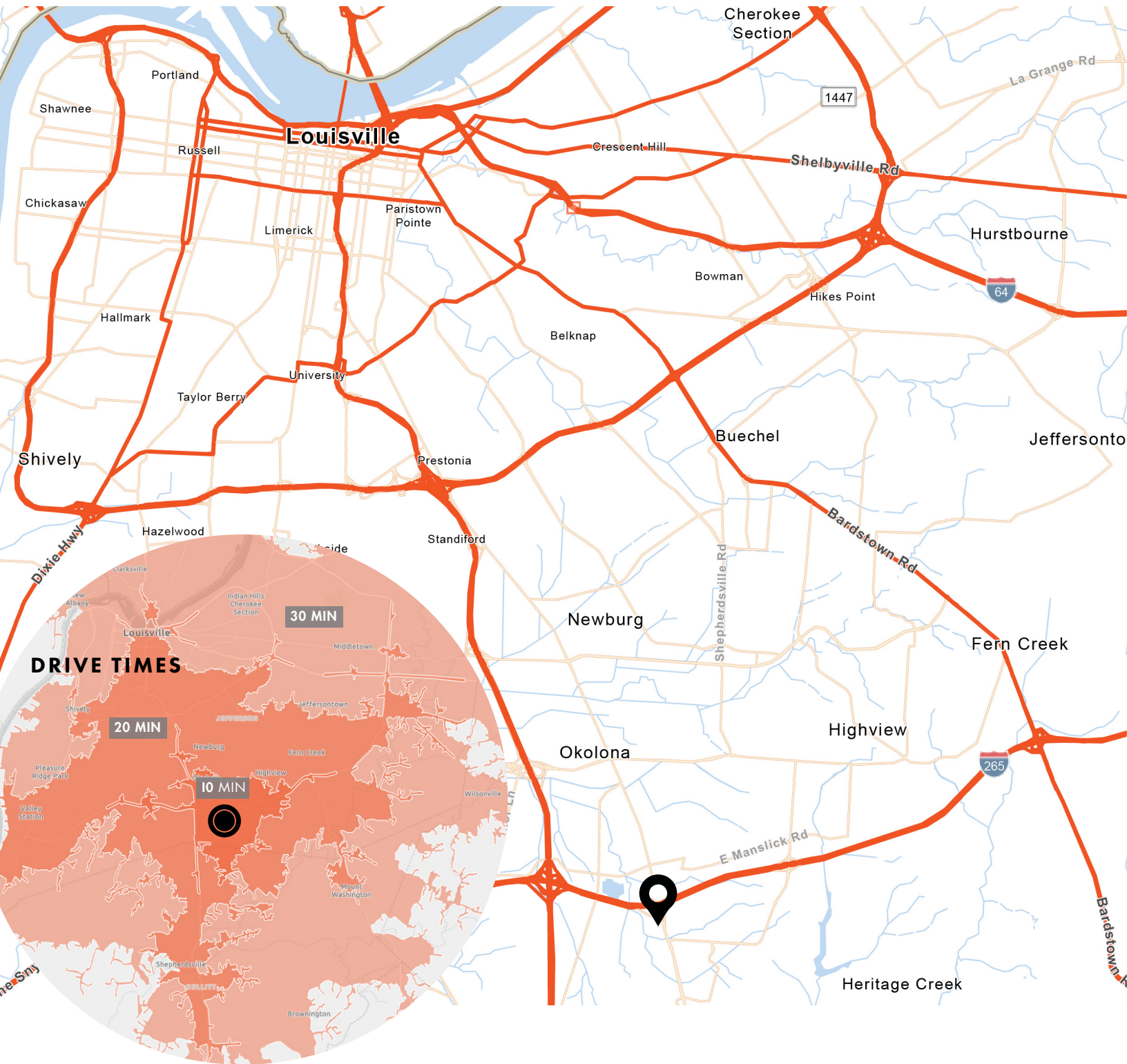
ADVISEMENT SERVICES PROVIDED BY:

MATT MESSIER, SIOR, CCIM
Partner, Managing Director
407.540.7718
matt.messier@foundrycommercial.com



RELIGIOUS PROPERTY FOR SALE
24,300± SF TOTAL ON 3.43± AC

LOCATION AND DRIVE TIMES



FOR MORE INFORMATION, PLEASE CONTACT:

JOEDY GILLILAND
 Broker
502.827.4863
 joedy@signalonerealty.com



ADVISEMENT SERVICES PROVIDED BY:

MATT MESSIER, SIOR, CCIM
 Partner, Managing Director
407.540.7718
 matt.messier@foundrycommercial.com



Although all information furnished regarding for sale, rental or financing is from sources we deem reliable, such information has not been verified and no express representation is made nor is any to be implied as to the accuracy thereof, and it is submitted subject to errors, omissions, changes of price, rental or other conditions, prior sale, lease or financing, or withdrawal without notice. All sizes are approximate and subject to survey.

RELIGIOUS PROPERTY FOR SALE
24,300± SF TOTAL ON 3.43± AC

PROPERTY PHOTOS



SANCTUARY FROM BACK



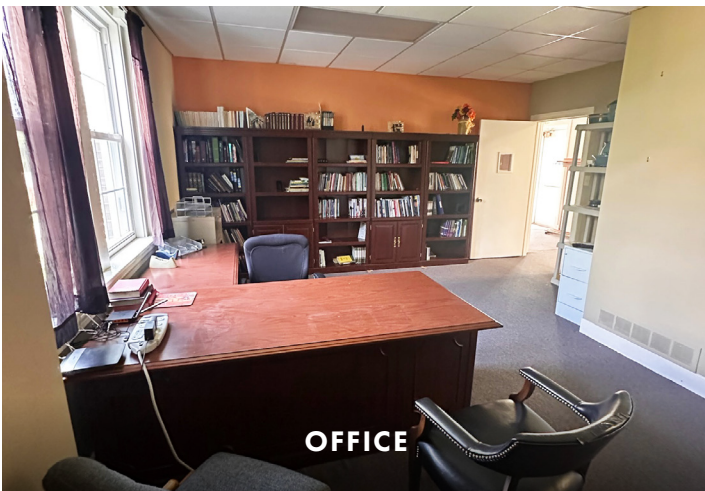
SANCTUARY FROM FRONT



PARLOR



CHOIR ROOM



OFFICE



CLASSROOM

FOR MORE INFORMATION, PLEASE CONTACT:

JOEDY GILLILAND
Broker
502.827.4863
joedy@signalonerealty.com



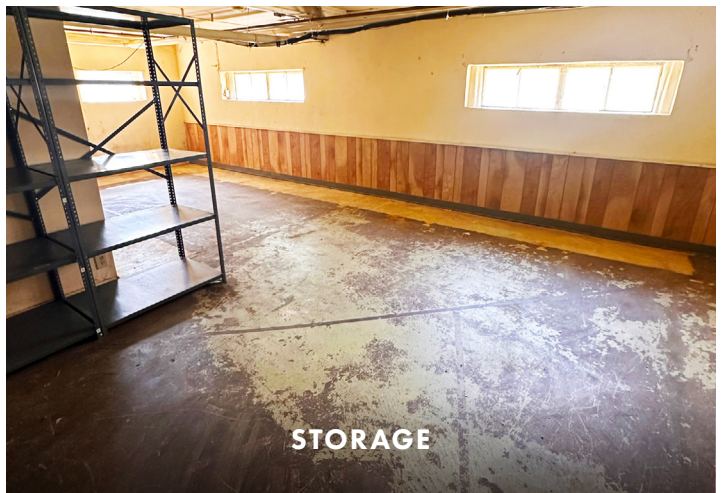
ADVISEMENT SERVICES PROVIDED BY:

MATT MESSIER, SIOR, CCIM
Partner, Managing Director
407.540.7718
matt.messier@foundrycommercial.com



RELIGIOUS PROPERTY FOR SALE
24,300± SF TOTAL ON 3.43± AC

PROPERTY PHOTOS



FOR MORE INFORMATION, PLEASE CONTACT:

JOEDY GILLILAND
Broker
502.827.4863
joedy@signalonerealty.com



ADVISEMENT SERVICES PROVIDED BY:

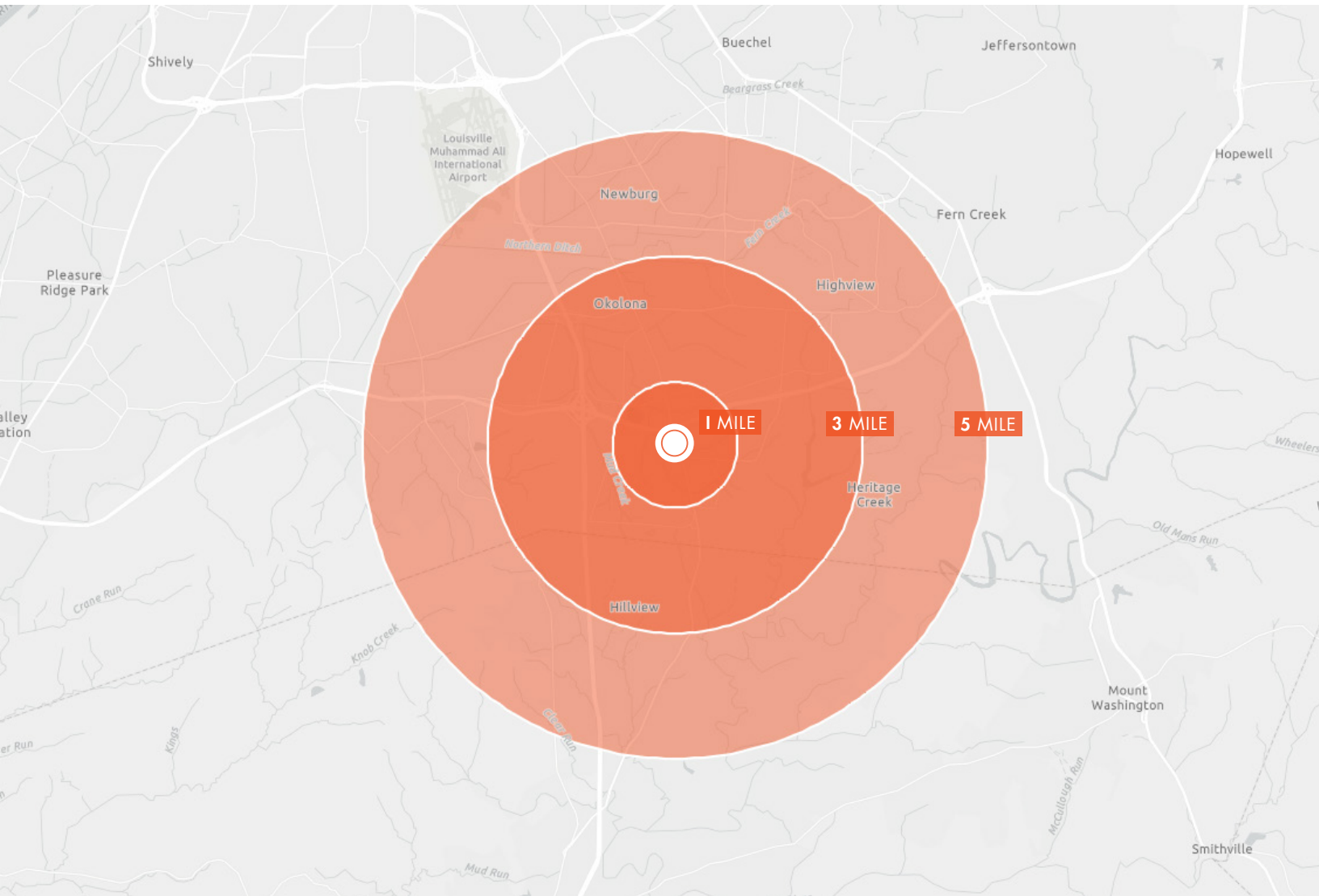
MATT MESSIER, SIOR, CCIM
Partner, Managing Director
407.540.7718
matt.messier@foundrycommercial.com



RELIGIOUS PROPERTY FOR SALE

24,300± SF TOTAL ON 3.43± AC

DEMOGRAPHICS



1 MILE RADIUS



6,994
ESTIMATED POPULATION 2025



37.2
MEDIAN AGE



\$214,970
MEDIAN HOME VALUE 2025



\$101,408
AVG HOUSEHOLD INCOME

3 MILE RADIUS



66,794
ESTIMATED POPULATION 2025



37.1
MEDIAN AGE



\$219,390
MEDIAN HOME VALUE 2025



\$88,834
AVG HOUSEHOLD INCOME

5 MILE RADIUS



137,315
ESTIMATED POPULATION 2025



37.6
MEDIAN AGE



\$225,576
MEDIAN HOME VALUE 2025



\$87,741
AVG HOUSEHOLD INCOME

FOR MORE INFORMATION, PLEASE CONTACT:

JOEDY GILLILAND
Broker
502.827.4863
joedy@signalonerealty.com



ADVISEMENT SERVICES PROVIDED BY:

MATT MESSIER, SIOR, CCIM
Partner, Managing Director
407.540.7718
matt.messier@foundrycommercial.com

