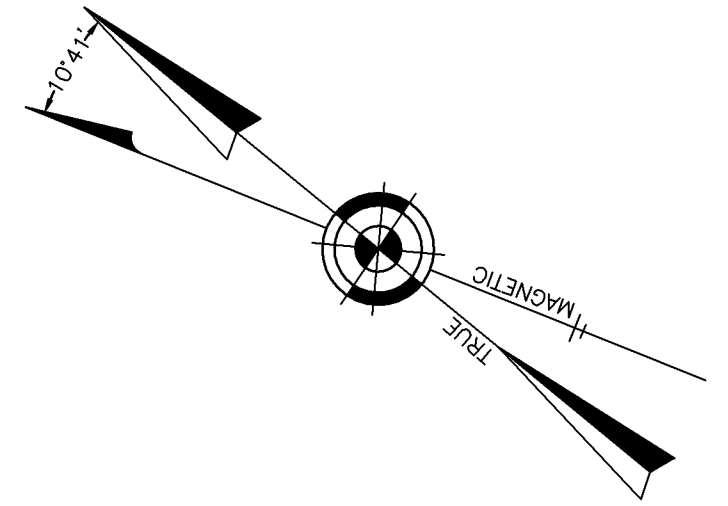


REVISIONS		
12-31-2014	CHARLES E. ADAMSON	42627
12-31-2016	CHARLES E. ADAMSON	42627
12-31-2017	CHARLES E. ADAMSON	42627
12-31-2018	CHARLES E. ADAMSON	42627
12-31-2019	CHARLES E. ADAMSON	42627

NOTE:
THIS SHEET HAS BEEN DRAWN USING COMPUTER AIDED DRAFTING/DESIGN (CAD/D) AND COORDINATE GEOMETRY (COGO).

SHEET 3



**BOROUGH OF AUDUBON
COUNTY OF CAMDEN**

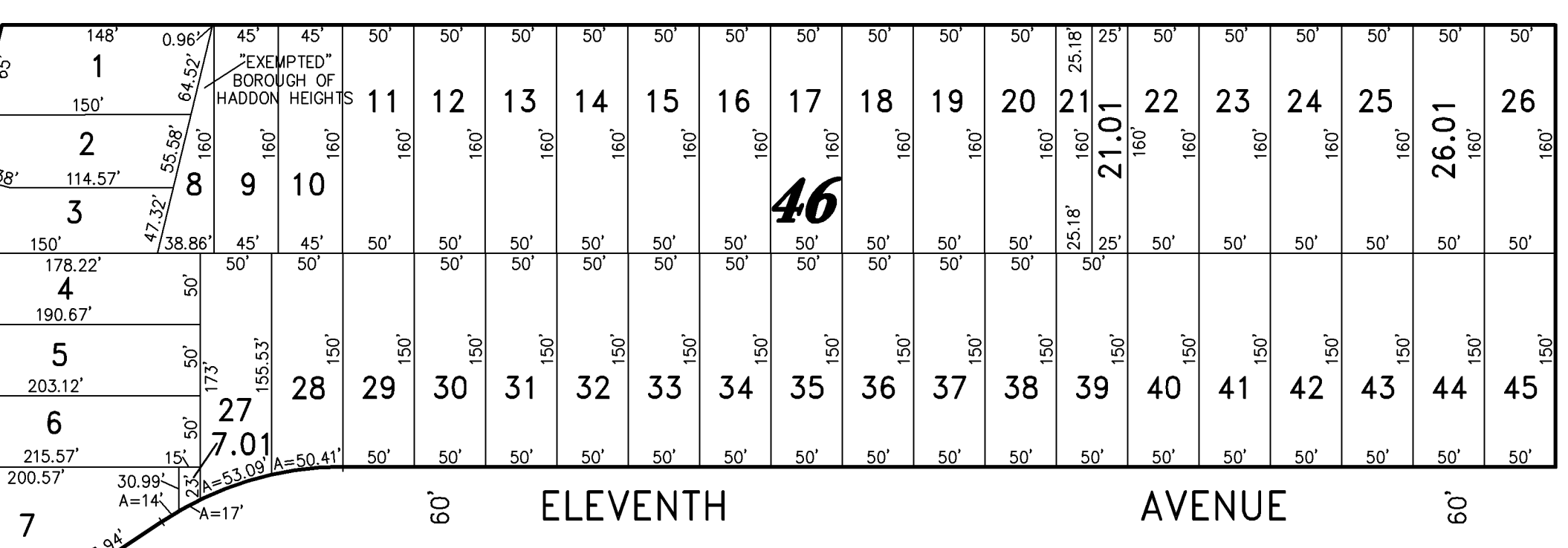
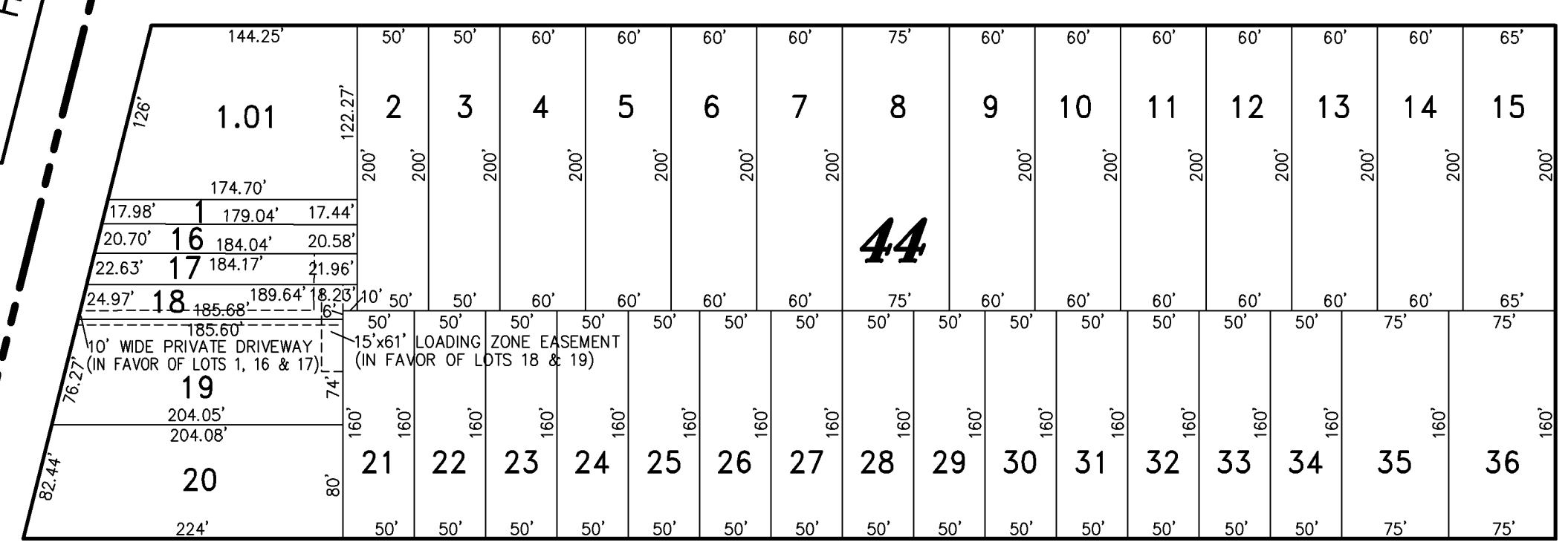
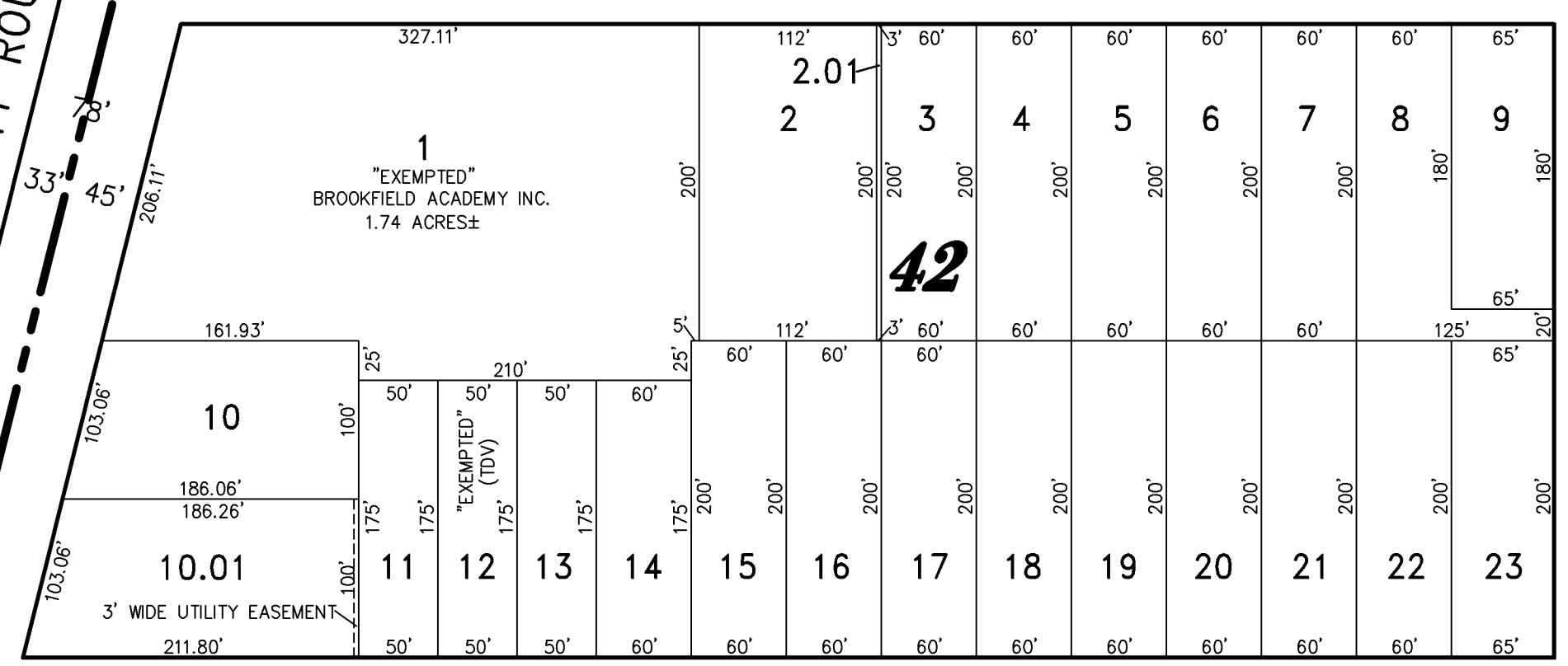
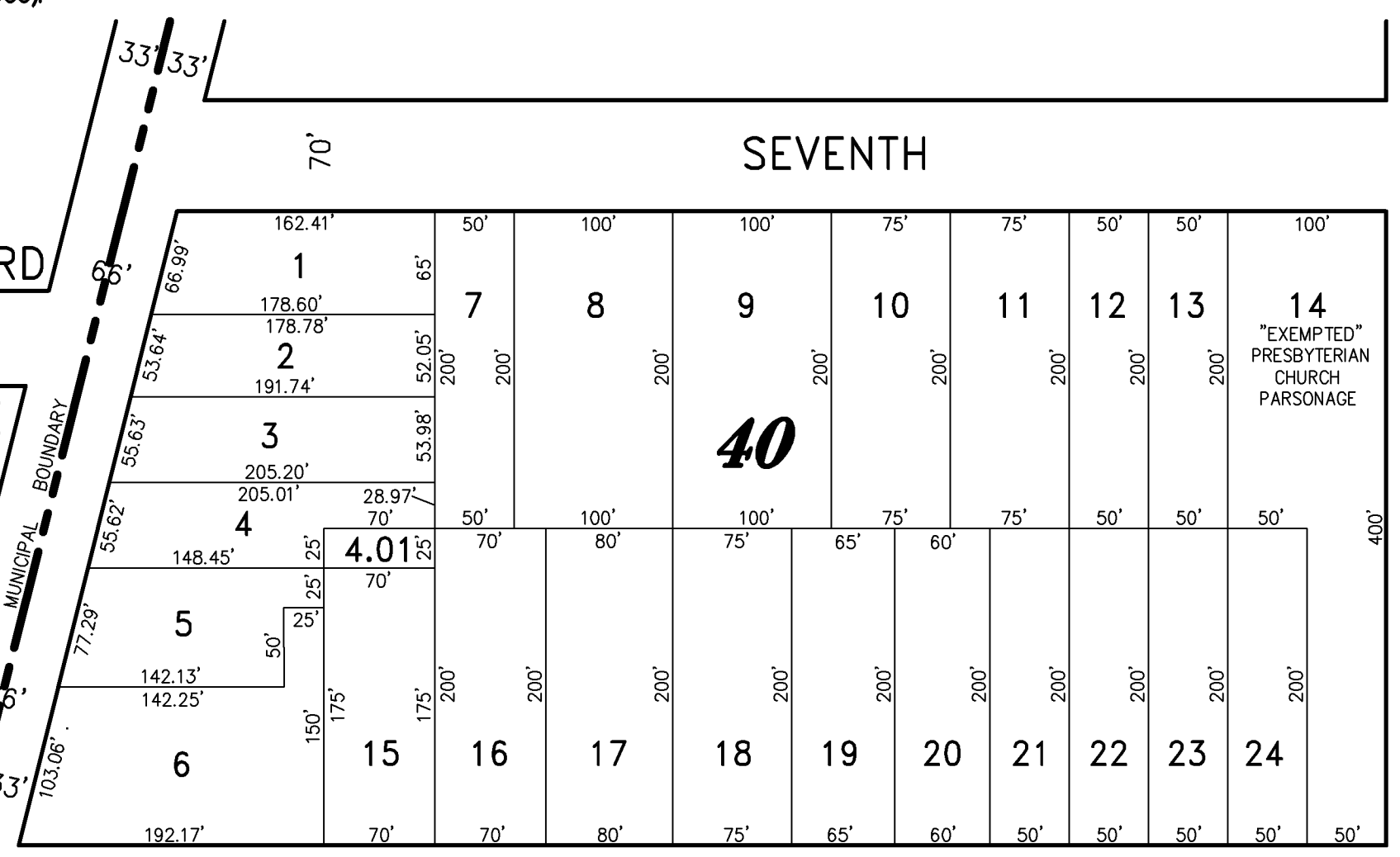
**WYOMING
AVENUE**

KINGS

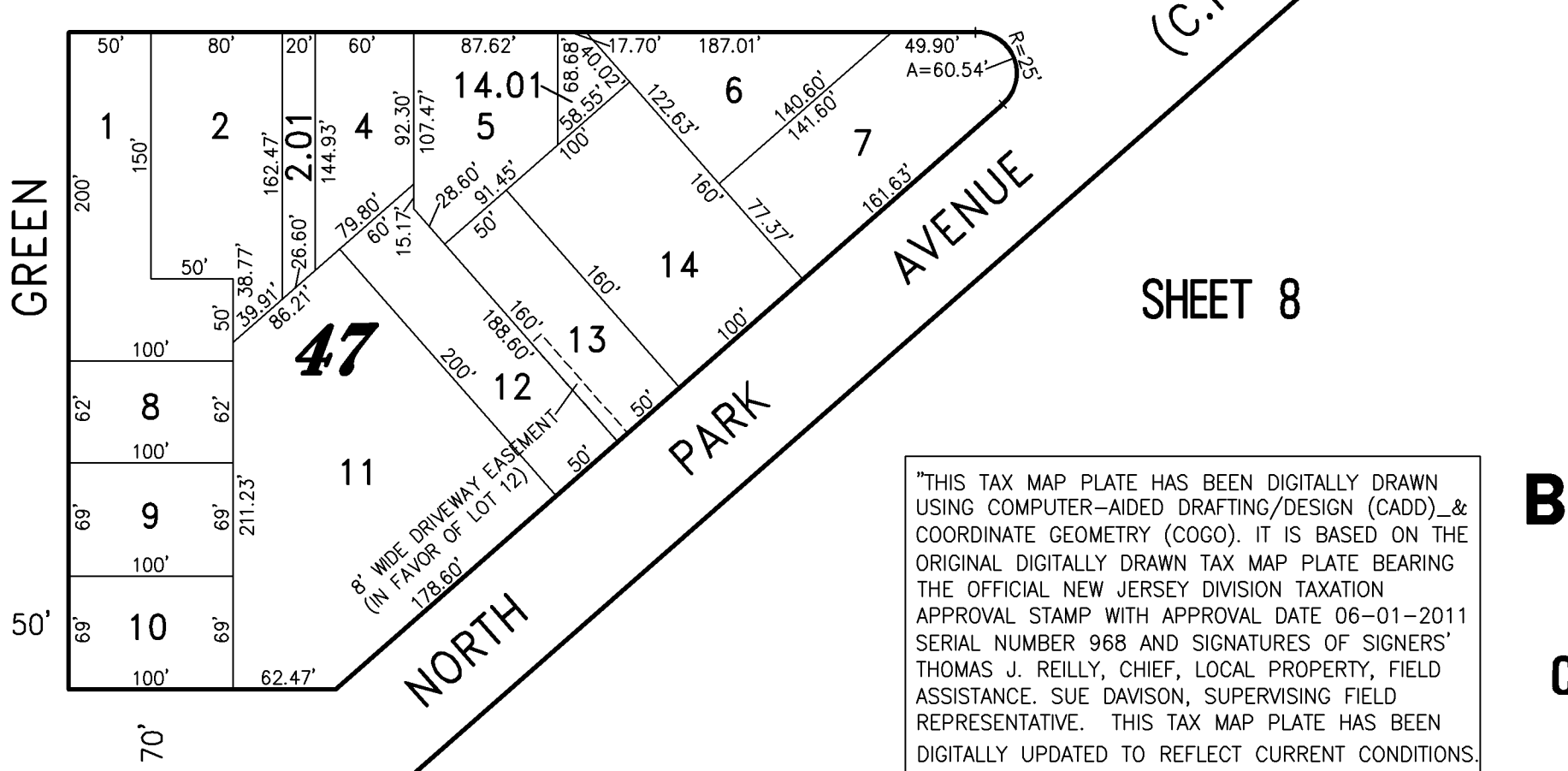
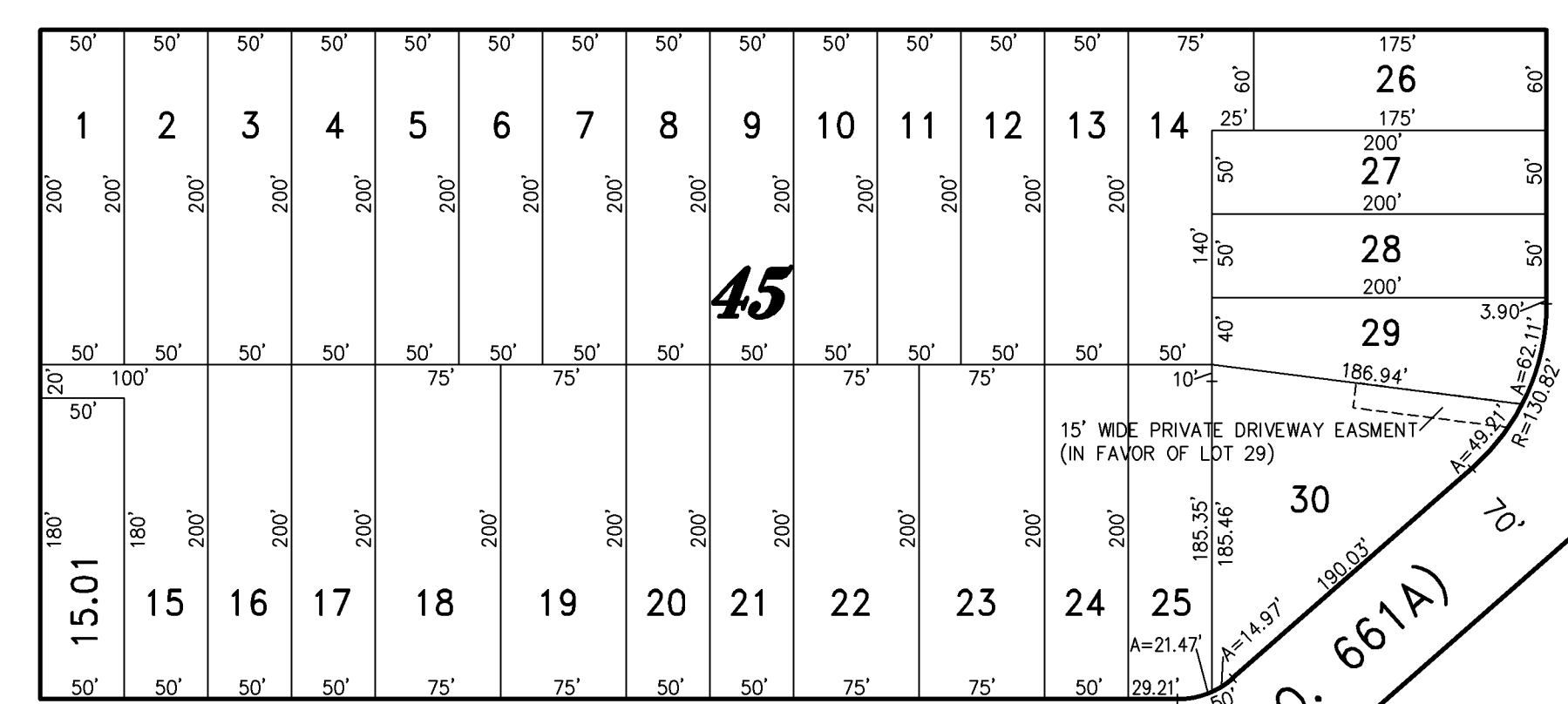
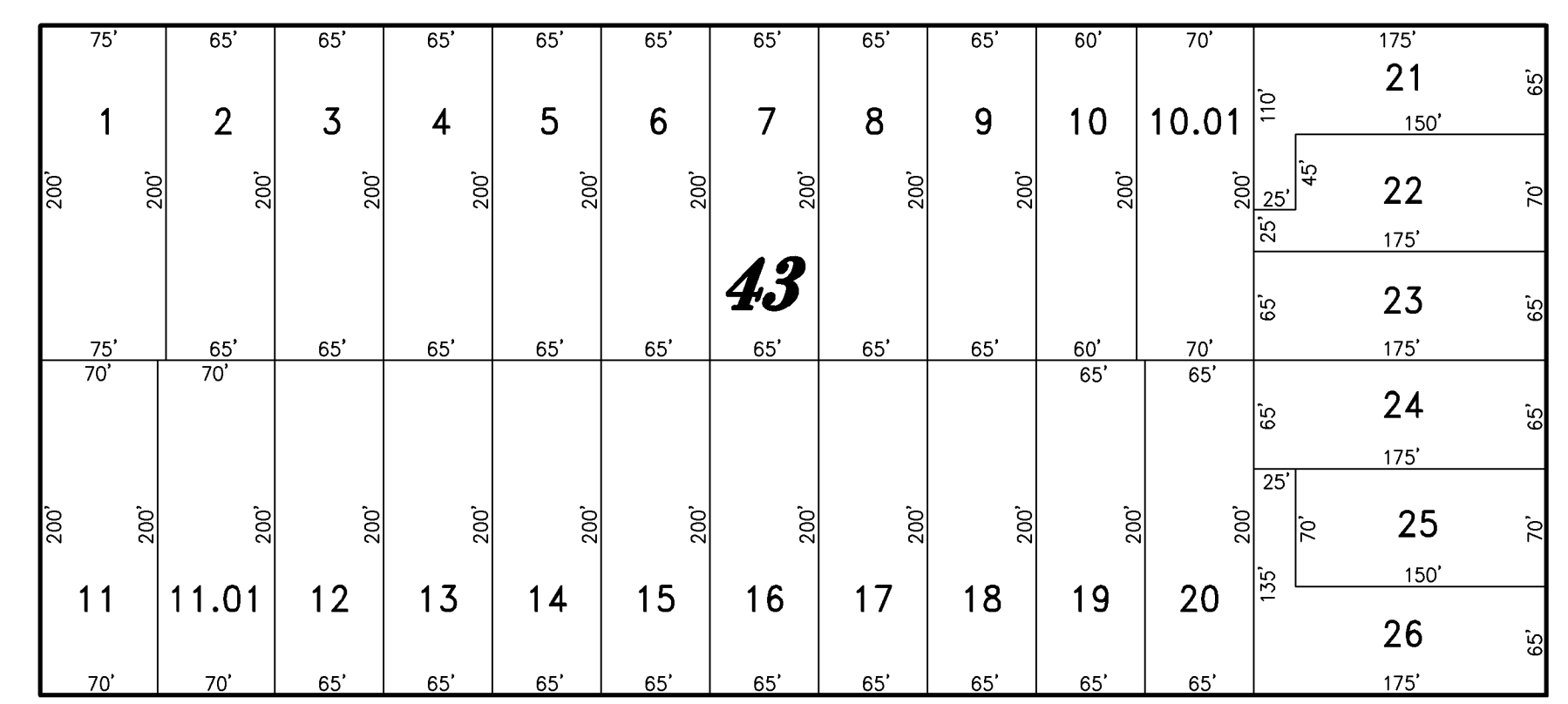
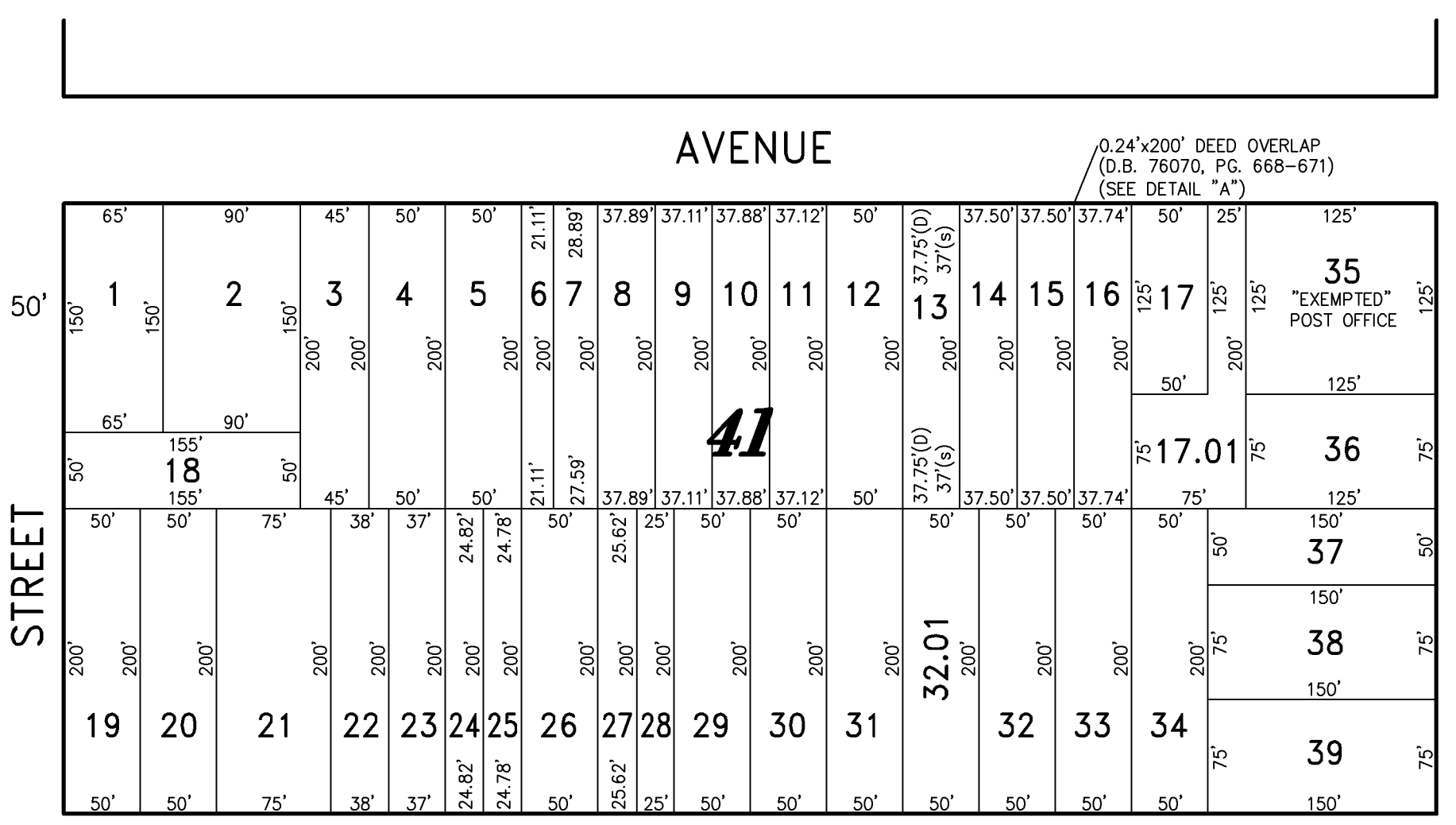
50' GLOVER AVENUE

THIRD AVENUE
(COUNTY ROUTE NO. 551 SPUR)

HIGHWAY



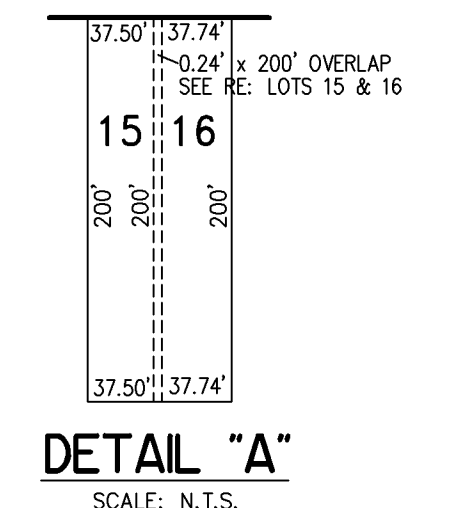
SHEET 4



SHEET 8

**(COUNTY ROUTE NO. 656)
AVENUE
STATION**

SEVENTH AVE.



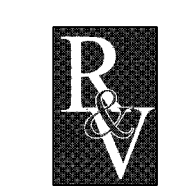
SHEET 6

"THIS TAX MAP PLATE HAS BEEN DIGITALLY DRAWN USING COMPUTER-AIDED DRAFTING/DESIGN (CAD/D) & COORDINATE GEOMETRY (COGO). IT IS BASED ON THE ORIGINAL DIGITALLY DRAWN TAX MAP PLATE BEARING THE OFFICIAL NEW JERSEY DIVISION TAXATION APPROVAL STAMP WITH APPROVAL DATE 06-01-2011 SERIAL NUMBER 968 AND SIGNATURES OF SIGNERS' THOMAS J. REILLY, CHIEF, LOCAL PROPERTY, FIELD ASSISTANCE; SUE DAVISON, SUPERVISING FIELD REPRESENTATIVE. THIS TAX MAP PLATE HAS BEEN DIGITALLY UPDATED TO REFLECT CURRENT CONDITIONS. THE ORIGINAL DIGITALLY DRAWN TAX MAP PLATE WITH THE OFFICIAL APPROVAL STAMP IS ON FILE WITH REMINGTON & VERNICK ENGINEERS."

**TAX MAP
BOROUGH OF HADDON HEIGHTS**

CAMDEN COUNTY NEW JERSEY
SCALE: 1" = 100' DATE: 5-17-2010

CHARLES E. ADAMSON NJ PROFESSIONAL LAND SURVEYOR LIC. NO. 42627



24 GA 28003800
REMINGTON & VERNICK ENGINEERS
232 KING'S HIGHWAY EAST HADDONFIELD, NJ 08033
(856) 795-9595, FAX (856) 795-1882
WEB SITE ADDRESS: WWW.RVE.COM

TO SHOW CONDITIONS AS OF 12-31-2019