

LAND FOR SALE

LOT #2 WENGER COURT CARLISLE, PA 17015



Pamela Fisher
pfisher@naicir.com | 717 761 5070 x112



3 Jennifer Court
Carlisle, PA 17015
circommercial.com



LOT #2 WENGER COURT

PROPERTY DETAILS

FOR SALE
\$825,000

PROPERTY HIGHLIGHTS

- +/- 1.74 acre lot in Wenger Court
- Water and sewer are extended to right-of-way and sidewalks and curbing installed
- Zoned Towne Center, which allows for multiple uses
- Near UPMC Carlisle, proposed Wellspan expansion, and Penn State medical facilities
- Less than 1 mile from Exit 45 of I-81

PROPERTY DESCRIPTION

+/- 1.74 acre lot on cul-de-sac. Lot is nearly 'pad ready'; storm water improvements have been completed and the NPDES permit has been terminated. Water and sewer services have been extended to the right-of-way line. Concrete curbing and sidewalks have been installed along the frontage.

LOCATION DESCRIPTION

Located along Wenger Court in Carlisle, PA. Wenger Court intersects with the Walnut Bottom Road across from Eastgate Drive. Wenger Court includes three (3) lots. Join neighbors including UPMC All Better Care, Healing Paws Veterinary Care. Located less than one (1) mile from Exit 45 of I-81.

OFFERING SUMMARY

Sale Price	\$825,000
Lot Size	+/- 1.74 Acres

PROPERTY SUMMARY

Address	Lot #2 Wenger Court, Carlisle, PA 17015
Municipality	South Middleton Township
County	Cumberland County
Tax Parcel #	40-09-0527-275
Zoning	Towne Center

[VIEW VIDEO](#)



Pamela Fisher

pfisher@naicir.com | 717 761 5070 x112

Information concerning this offering comes from sources deemed reliable, but no warranty is made as to the accuracy thereof, and it is submitted subject to errors, omissions, change of price or other conditions, prior sale or lease, or withdrawal without notice. All sizes approximate. PA License #RB024320A



3 Jennifer Court
Carlisle, PA 17015
circommercial.com

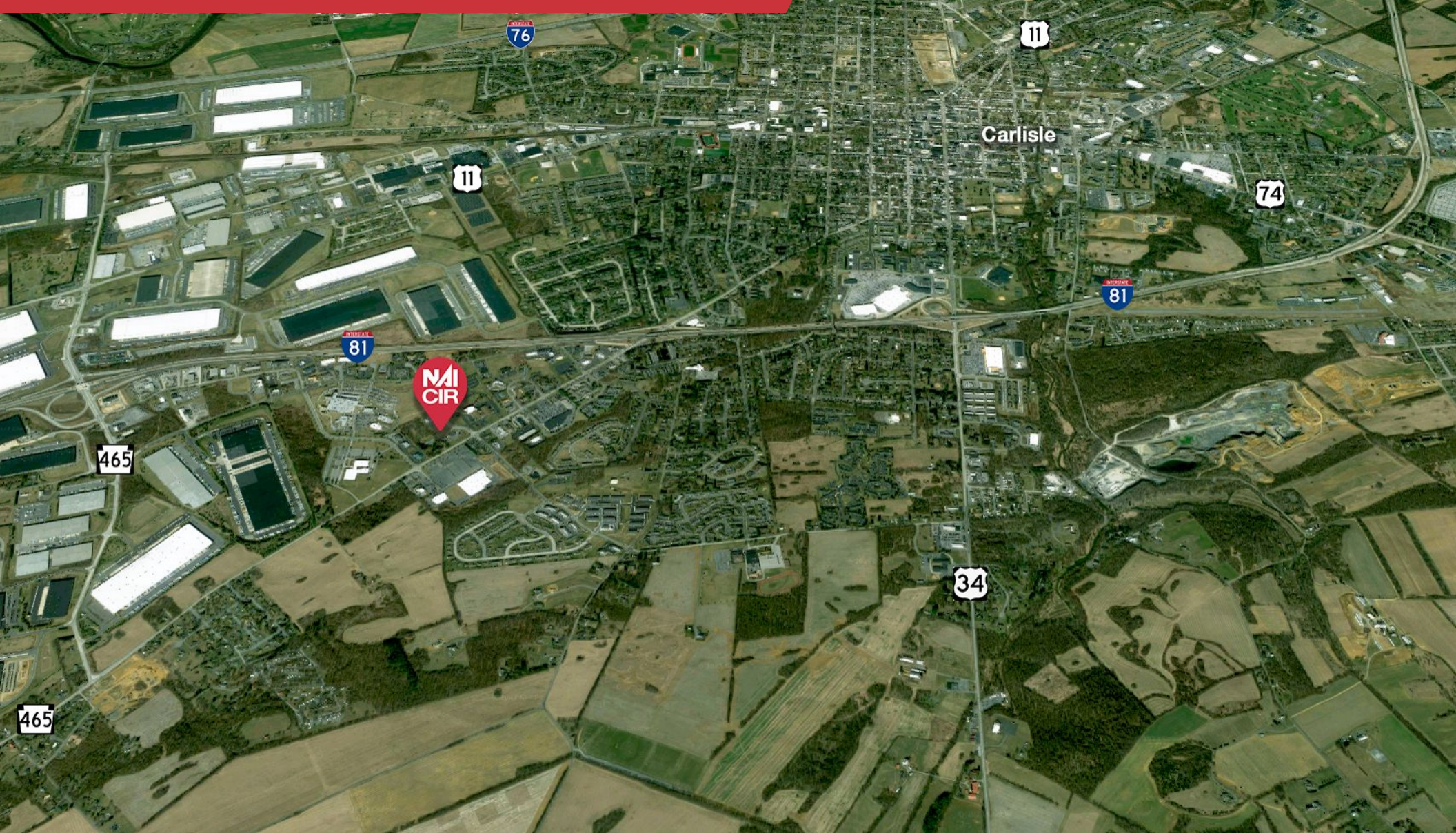
NAICIR

LOT #2 WENGER COURT

LOCAL MAP

FOR SALE

\$825,000



Pamela Fisher
pfisher@naicir.com | 717 761 5070 x112

Information concerning this offering comes from sources deemed reliable, but no warranty is made as to the accuracy thereof, and it is submitted subject to errors, omissions, change of price or other conditions, prior sale or lease, or withdrawal without notice. All sizes approximate. PA License #RB024320A



3 Jennifer Court
Carlisle, PA 17015
circommercial.com

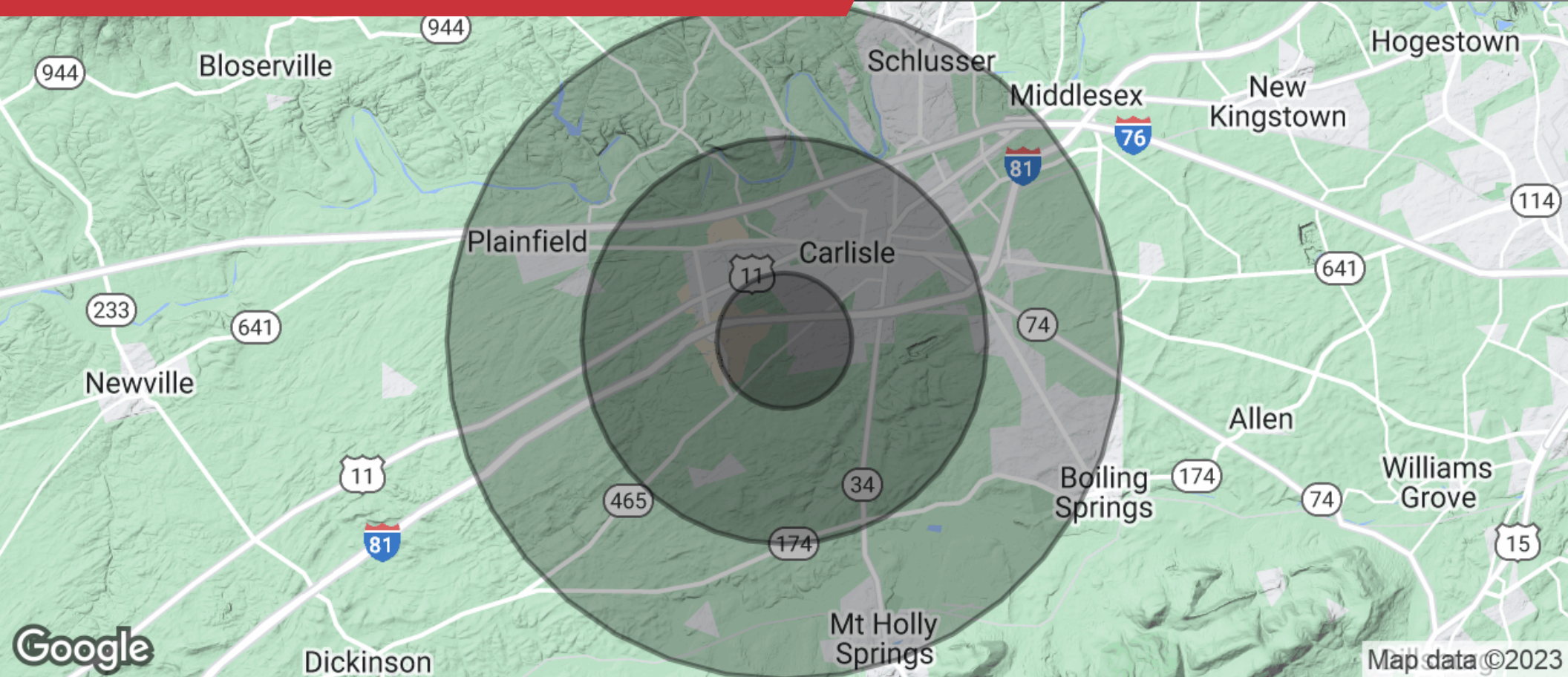


LOT #2 WENGER COURT

DEMOGRAPHICS

FOR SALE

\$825,000



POPULATION

1 MILE	3 MILES	5 MILES
1,816	26,354	49,673



HOUSEHOLDS

1 MILE	3 MILES	5 MILES
856	11,337	21,182



INCOME

1 MILE	3 MILES	5 MILES
\$87,917	\$73,066	\$82,700

Pamela Fisher

pfisher@naicir.com | 717 761 5070 x112



3 Jennifer Court
Carlisle, PA 17015
circommercial.com



Information concerning this offering comes from sources deemed reliable, but no warranty is made as to the accuracy thereof, and it is submitted subject to errors, omissions, change of price or other conditions, prior sale or lease, or withdrawal without notice. All sizes approximate. PA License #RB024320A