



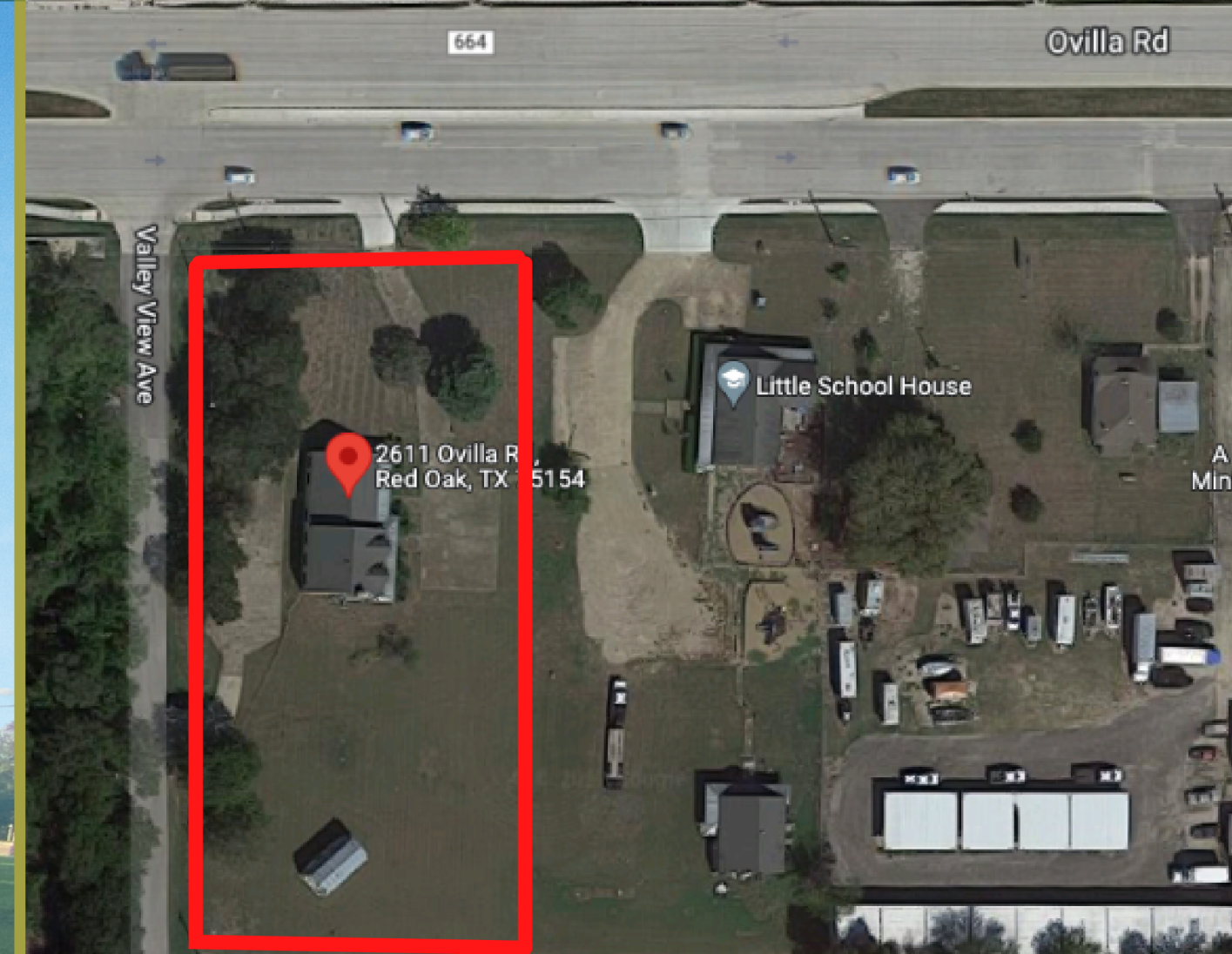
JIMMY POARCH
REALTOR

214.801.1740

jimmy@hiviewrealestate.com



2611 OVILLA RD Red Oak



- Large corner lot sitting on 2.25 Acres
- High-growth area
- Great investment potential
- Outstanding Zoning



JIMMY POARCH REALTOR

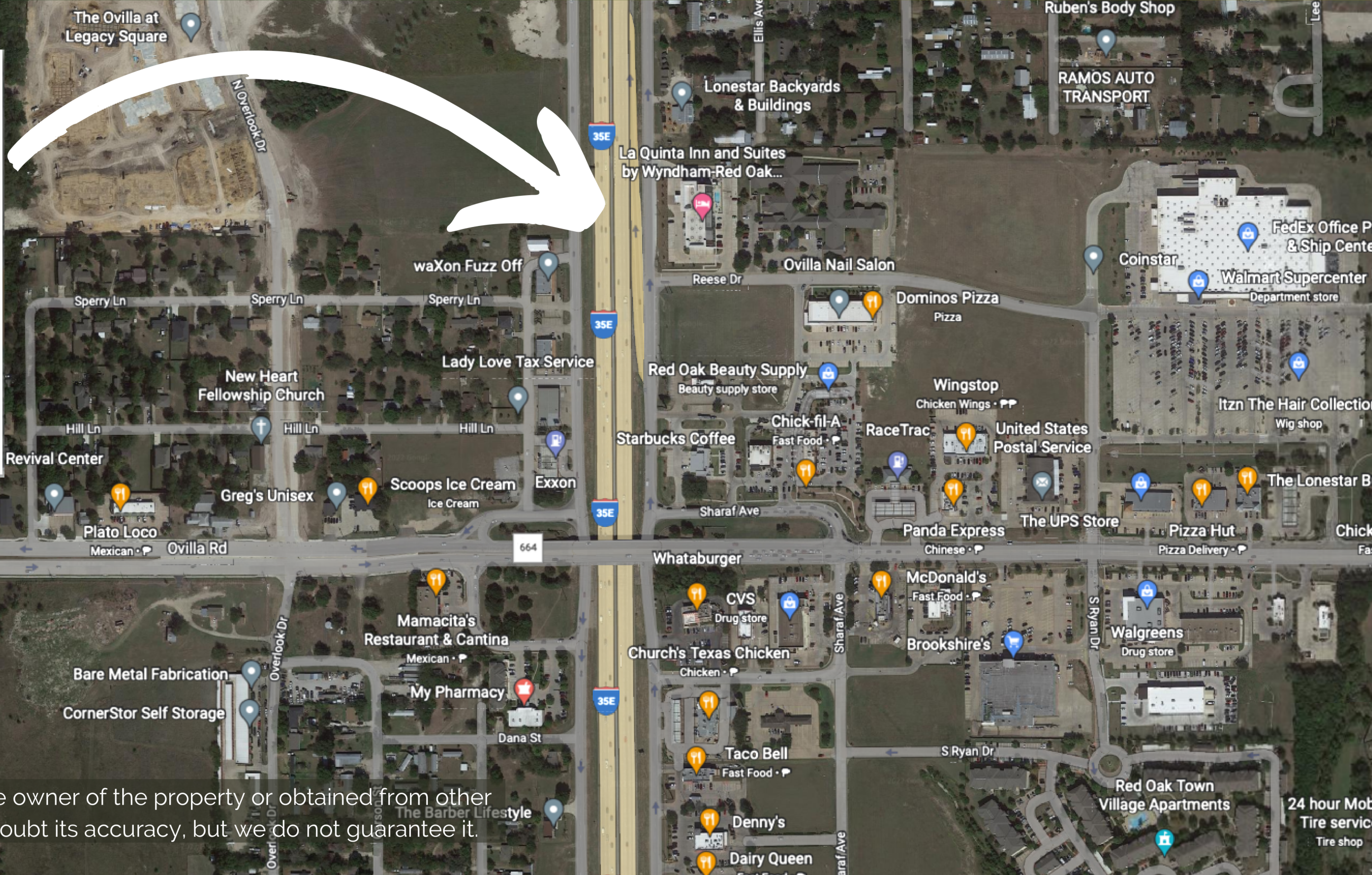
jimmy@hiviewrealestate.com



214.801.1740



DATA FROM [HTTPS://WWW.REDOAKTX.ORG](https://www.redoaktx.org)



OVILLA RD



Information contained herein has been obtained from the owner of the property or obtained from other sources that we deem reliable. We have no reason to doubt its accuracy, but we do not guarantee it.

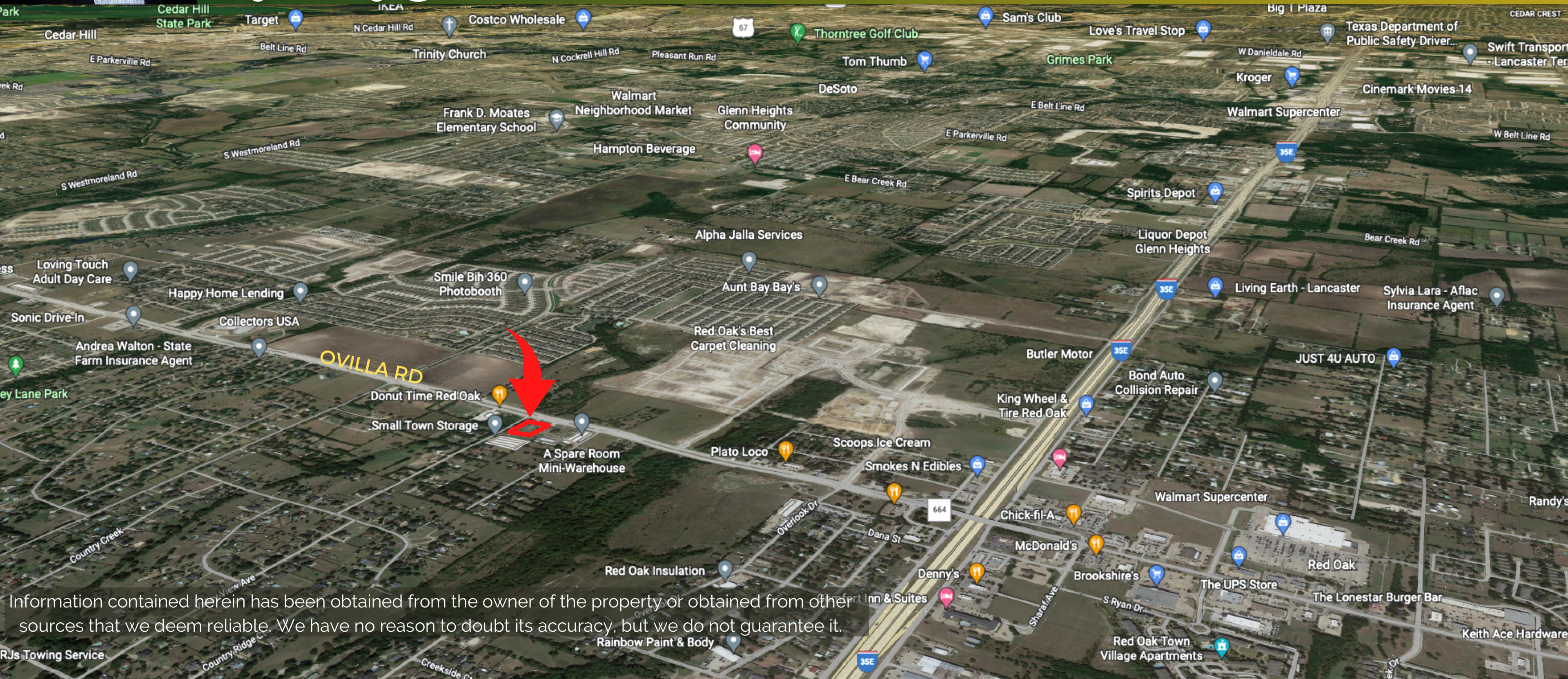


JIMMY POARCH REALTOR

jimmy@hiviewrealestate.com



214.801.1740



Information contained herein has been obtained from the owner of the property or obtained from other sources that we deem reliable. We have no reason to doubt its accuracy, but we do not guarantee it.