



Offering Summary

Lease Rate:	Negotiable
NNN's:	Approx. \$24.81 PSF
Building Size:	13,500 SF
Available SF:	1,500 SF
Lot Size:	1.33 Acres
Year Built:	1994
Zoning:	B-2: General Business District
Market:	Schaumburg
Traffic Count:	Approx. 26,700

Property Overview

Prime 1,500 SF small shop space available at Woodfield Corners, along Golf Road, just east of the heavily trafficked Golf Road & Roselle Road signalized intersection (60,000 VPD) in Schaumburg. Opportunity to join co-tenants Panda Express, Crumbl Cookies, Jersey Mike's, Rosati's Pizza, H&R Block, Batteries Plus, and Little Greek Fresh Grill. The building is extremely well located within Schaumburg's trade corridor, approx 2.5 miles west of the Interstate-90 & Interstate-290 interchange and less than two (2) miles from Woodfield Mall, the largest mall in Illinois anchored by Macy's, Nordstrom, JCPenney, and Primark. Other neighboring retailers include Jewel-Osco, Amazon Fresh, Burlington, Walgreens, Savers, T.J. Maxx, Party City, Binny's Beverage Depot, Petco, Best Buy, Planet Fitness, Crunch Fitness, Orangetheory Fitness, Portillo's, Outback Steakhouse, KFC, Wendy's, McDonald's, Chipotle, and Chick Fil-A, among many other national retailers.

Property Highlights

- Opportunity to join co-tenants Panda Express, Batteries Plus, Crumbl Cookies, Jersey Mike's, Rosati's Pizza, H&R Block and Little Greek Fresh Grill
- Conveniently located within 2.5 miles from both the Interstate-90/Interstate-290 interchange and Woodfield Mall, the largest mall in Illinois
- Woodfield Corners features dual-sided pylon signage along Golf Road and a large on-site parking lot totaling 76 spaces (5.63/1,000 SF)

Matthew Tarshis
Principal

847.780.8063
mtarshis@frontlinerepartners.com

Andrew Picchietti
Vice President

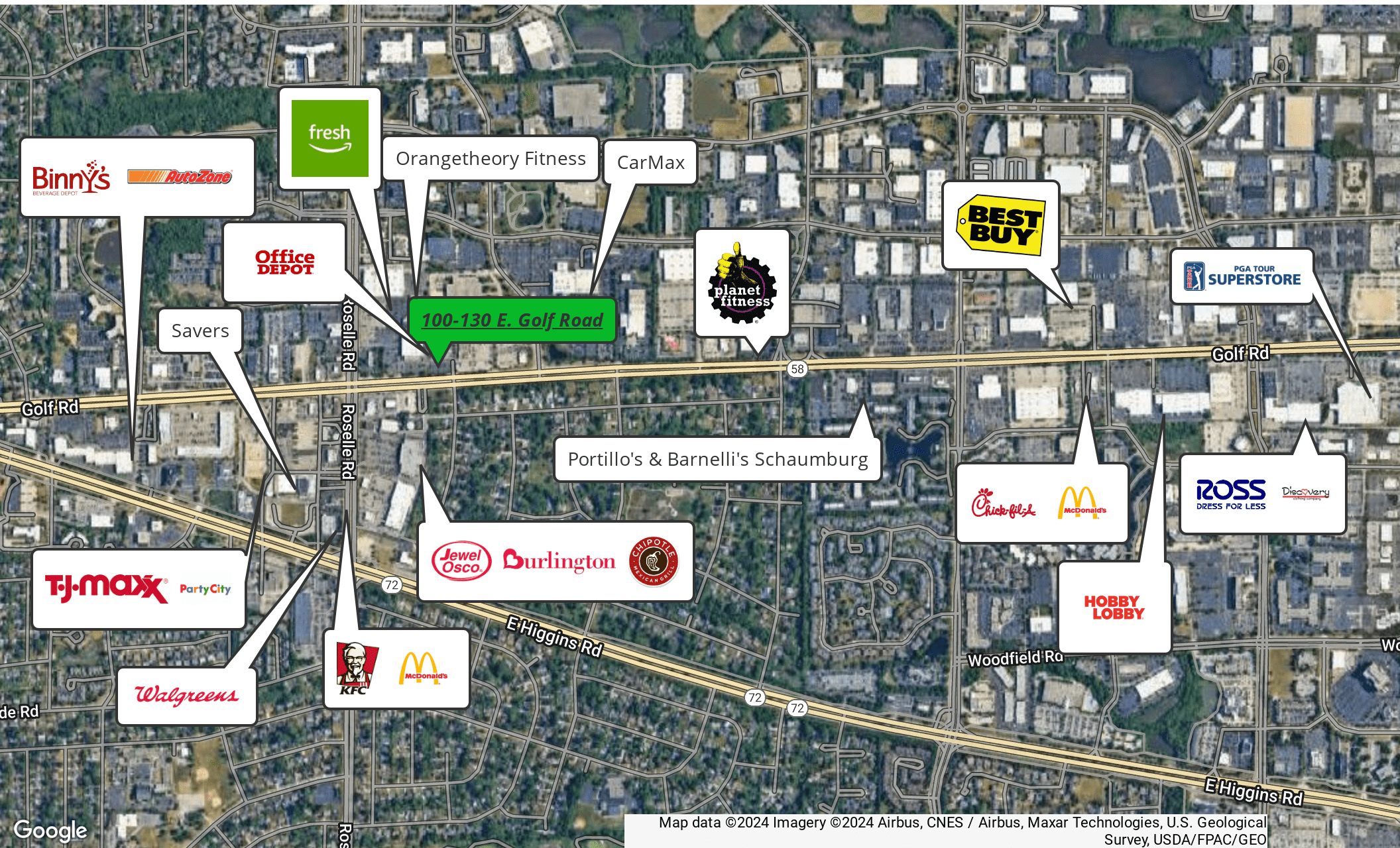
847.602.2005
apicchietti@frontlinerepartners.com

Andrew Rubin
Executive Vice President

224.628.4005
arubin@frontlinerepartners.com

Zack Pearlstein
Senior Vice President

847.275.6106
zpearlstein@frontlinerepartners.com



Map data ©2024 Imagery ©2024 Airbus, CNES / Airbus, Maxar Technologies, U.S. Geological Survey, USDA/FPAC/GEO

Matthew Tarshis
Principal

847.780.8063
mtarshis@frontlinerepartners.com

Andrew Picchiatti
Vice President

847.602.2005
apicchiatti@frontlinerepartners.com

Andrew Rubin
Executive Vice President

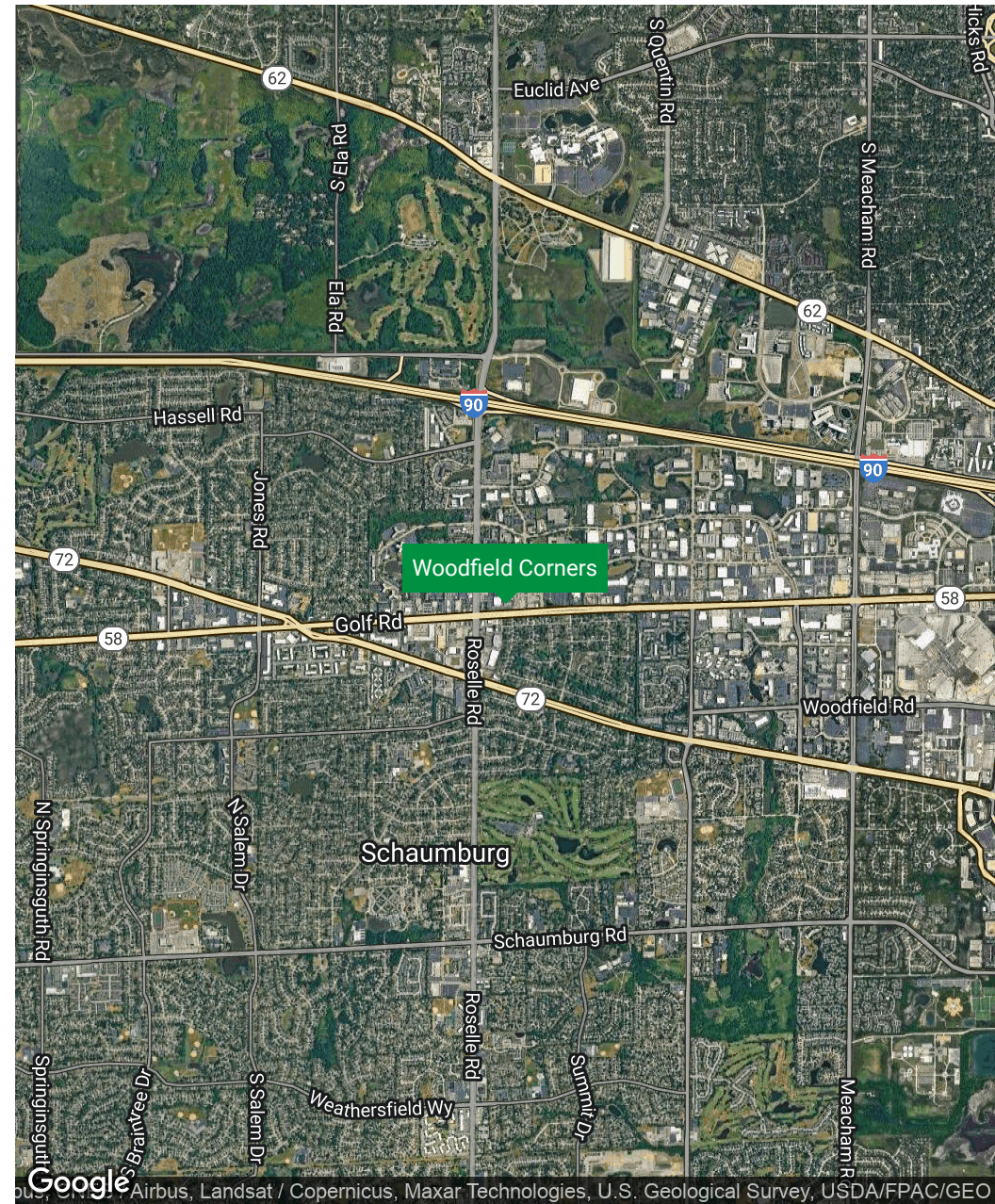
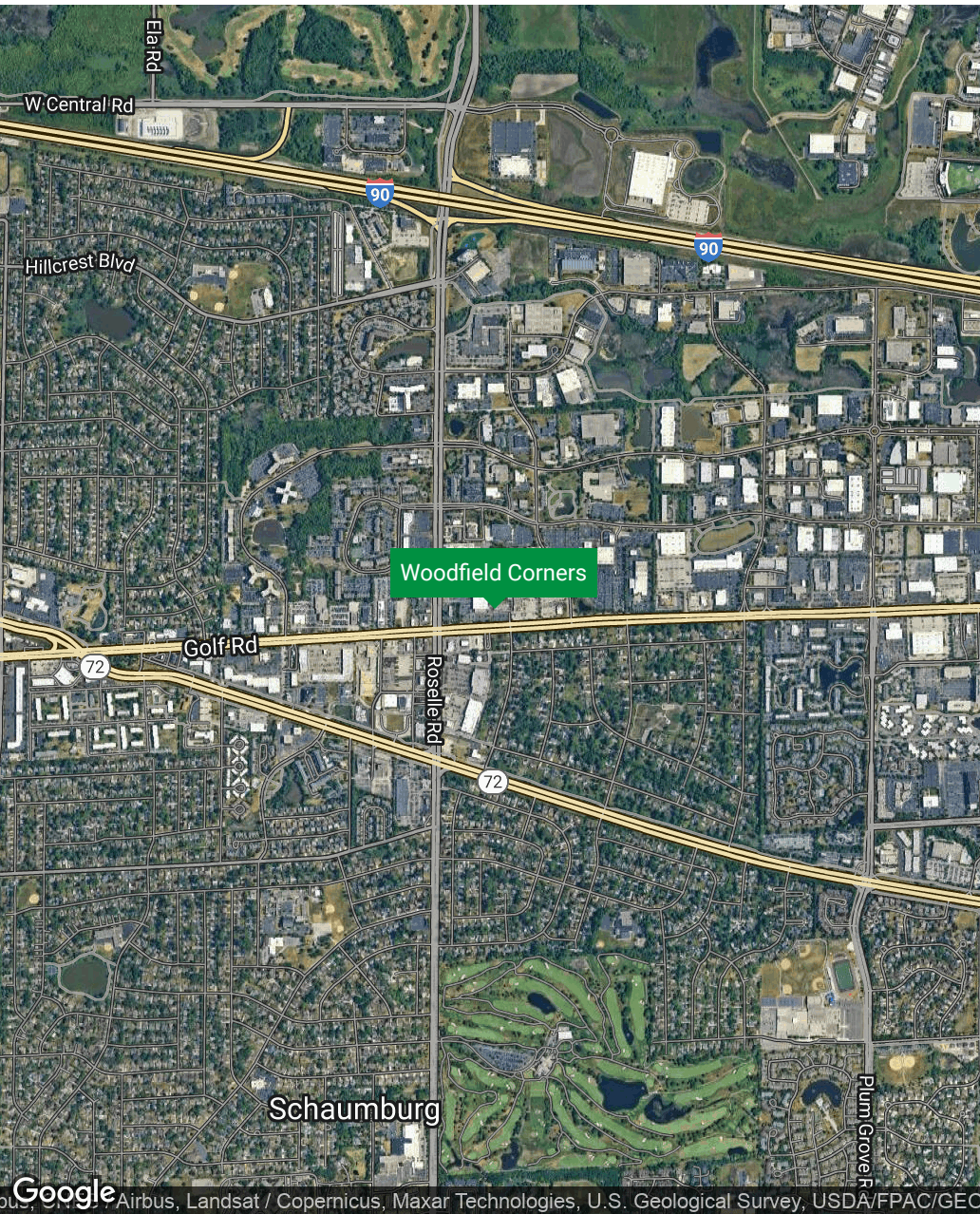
224.628.4005
arubin@frontlinerepartners.com

Zack Pearlstein
Senior Vice President

847.275.6106
zpearlstein@frontlinerepartners.com

FOR LEASE | 100 E GOLF RD

REGIONAL MAP



Matthew Tarshis
Principal

847.780.8063
mtarshis@frontlinerepartners.com

Andrew Picchietti
Vice President

847.602.2005
apicchietti@frontlinerepartners.com

Andrew Rubin
Executive Vice President

224.628.4005
arubin@frontlinerepartners.com

Zack Pearlstein
Senior Vice President

847.275.6106
zpearlstein@frontlinerepartners.com

Frontline Real Estate Partners | 3

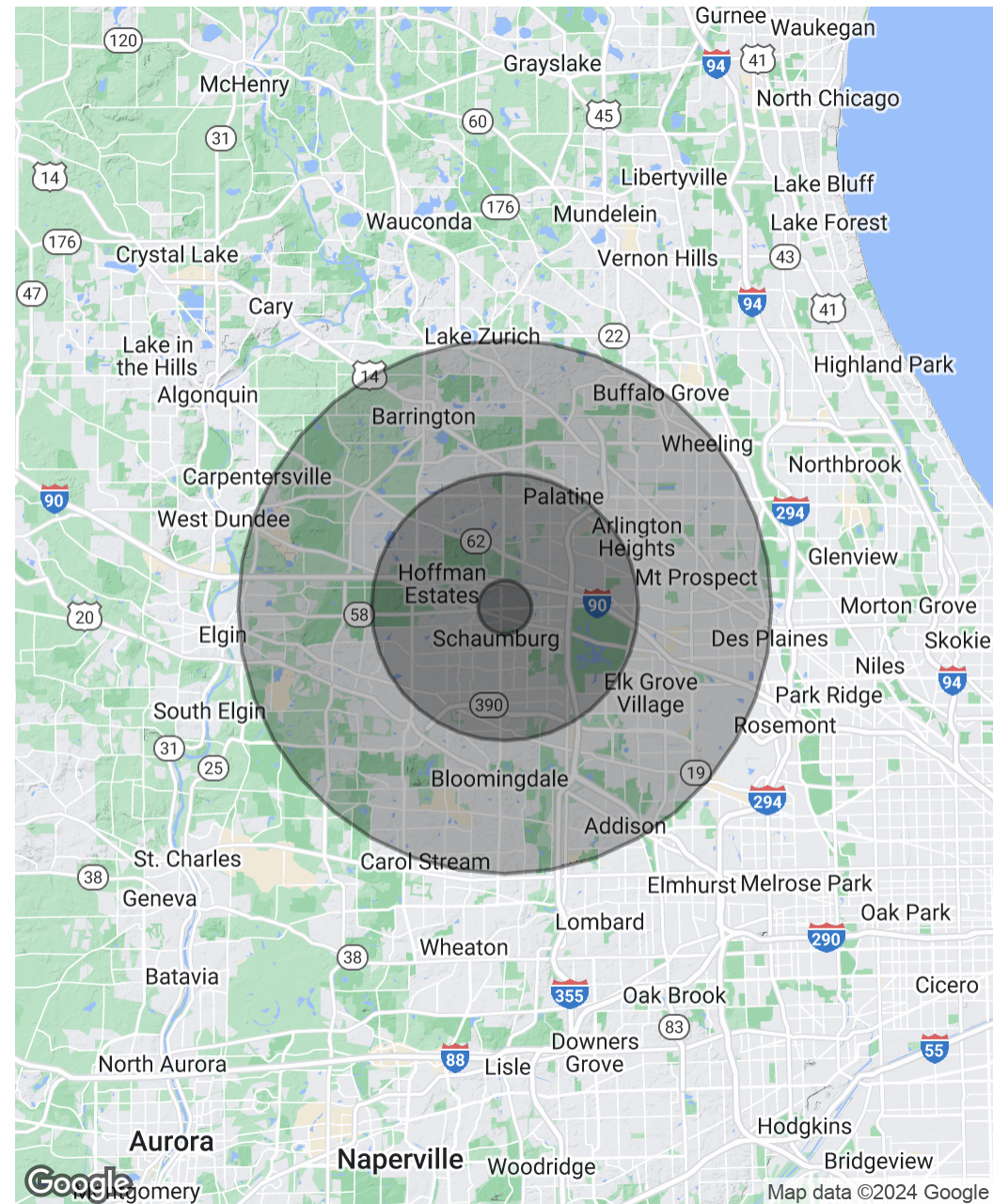
FOR LEASE | 100 E GOLF RD

DEMOGRAPHICS MAP & REPORT

Population	1 Mile	5 Miles	10 Miles
Total Population	12,020	246,054	884,908
Average Age	34.6	41.1	40.8
Average Age (Male)	35.6	40.1	39.6
Average Age (Female)	33.8	41.7	41.6

Households & Income	1 Mile	5 Miles	10 Miles
Total Households	4,933	98,062	340,996
# of Persons per HH	2.4	2.5	2.6
Average HH Income	\$78,532	\$104,629	\$104,208
Average House Value	\$174,239	\$276,276	\$281,060

* Demographic data derived from 2020 ACS - US Census



Matthew Tarshis
Principal

847.780.8063
mtarshis@frontlinerepartners.com

Andrew Picchiatti
Vice President

847.602.2005
apicchiatti@frontlinerepartners.com

Andrew Rubin
Executive Vice President

224.628.4005
arubin@frontlinerepartners.com

Zack Pearlstein
Senior Vice President

847.275.6106
zpearlstein@frontlinerepartners.com



Matthew Tarshis
Principal

847.780.8063
mtarshis@frontlinerepartners.com

Andrew Picchietti
Vice President

847.602.2005
apicchietti@frontlinerepartners.com

Andrew Rubin
Executive Vice President

224.628.4005
arubin@frontlinerepartners.com

Zack Pearlstein
Senior Vice President

847.275.6106
zpearlstein@frontlinerepartners.com