



SPACE TO OWN / LEASE

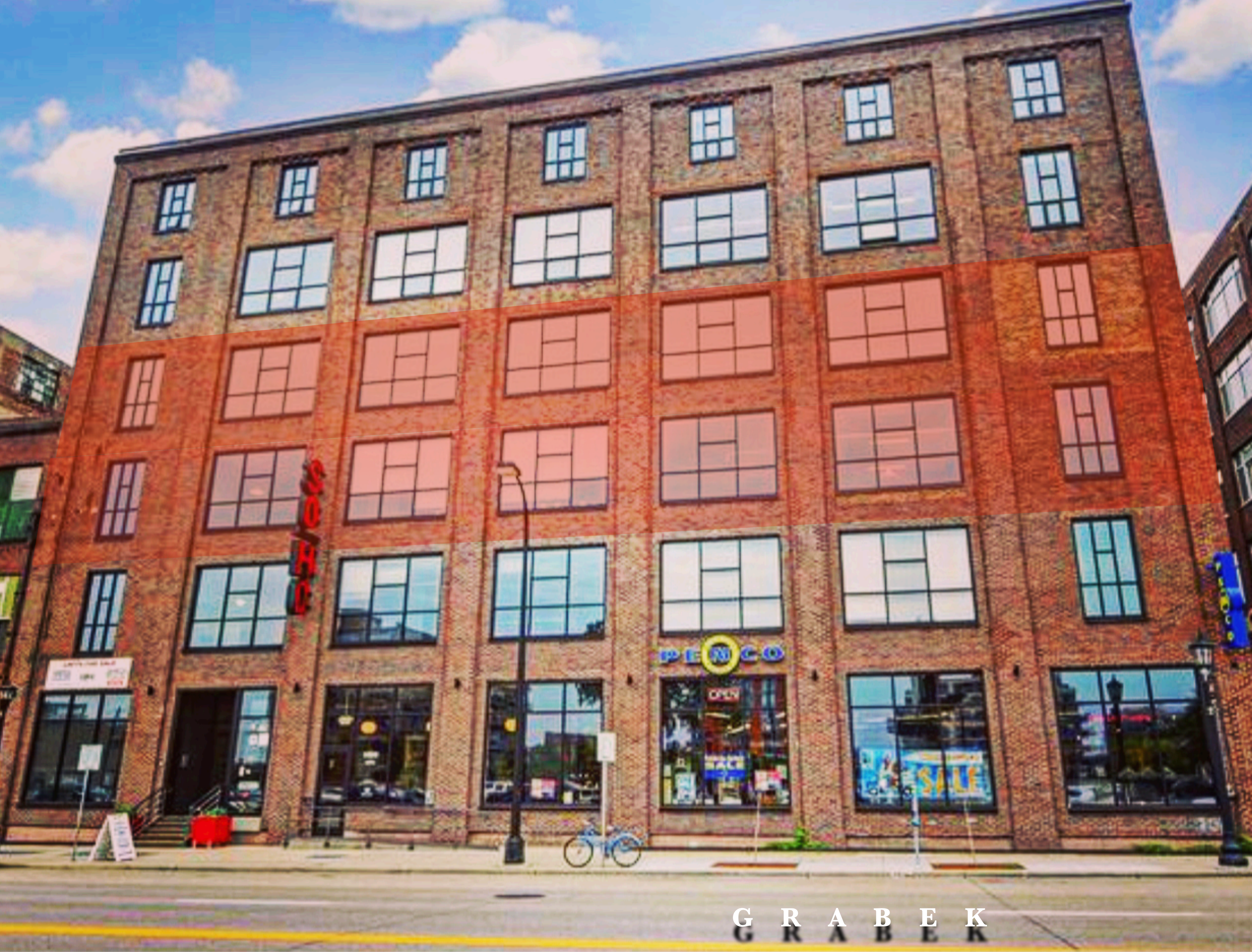
718 WASHINGTON AVE N

G R A B E K





G R A B E K



SOHO, 718 WASHINGTON AVE N

5,334, 7,475, + 17,471 SF OF COOL, CREATIVE, ELEVATED SPACE in the heart of the most sought after submarket in the North. Flanked by tons of local energy in Parlour, Borough, Bar La Grassa, Black Sheep, etc etc.

FOR LEASE:

\$25 NET

FOR SALE:

SUITE 301 : 5,334 SF \$1.995M

SUITE 306 : 7,475 SF \$2.995M

4TH FLOOR: 17,471 SF \$6.0M

GRABEK
GRABEK



PARKING

1. Nordic Ramp
\$225/month
2. Basset Creek Lot
\$55/month
3. North 4th St Lot
370 Stalls \$70-\$95/month
4. Designers Guild
240 Stalls - \$120/month
5. Target Field Station Ramp
\$240/month
6. 419 Washington Ave N Ramp
Public Parking in part T&D
7. Itasca
156 Stalls - \$79.29/month
8. North Loop Ramp
340 Spaces - \$180/month
9. TownePlace Suites
\$15 Flat Kate
10. Ramp C
1473 Stalls - \$160/month
11. Ramp B
1612 Stalls - \$165/month
12. N 1st Ave
62 Stalls - \$20 Max/day
13. Bar La Grassa Lot
Metered Parking



RETAIL

1. Atmosfere
2. Lole
3. Martin Patrick3
4. Lululemon
5. InVision
6. Askov Finlayson
7. D. NOLO
8. Bonobos
9. Warby Parker



APTS & HOTELS

1. Brunswick (Apartments)
2. Third North Apartments
3. Solve Apartments
4. The Copham (Apartments)
5. Mill City Apartments
6. Riverstation Condos
7. TownePlace Suites (Hotel)
8. Heritage Landing (Apartments)
9. The Paxon (Apartments)
10. Junction Flats (Apartments)
11. Pock Street Flats (Apartments)
12. Hewing Hotel
13. Velo (Apartments)
14. 222 Hennepin Apartment Homes
15. Borealis North Loop



GROCERY STORE

1. Whole Foods



COFFEE SHOPS

1. Spy House Coffee
2. Dunn Brothers Coffee
3. Caribou Coffee
4. Starbucks
5. Moose & Sadies
6. Bachelor Farmer



RESTAURANTS

1. Bar La Grassa
2. Borough
3. Black Sheep
4. Smack Shack
5. Cuzzy's
6. Tulibee
7. J.D. Hoyts
8. The Monte Carlo
9. Spoon and Stable
10. Red Cow
11. Red Rabbit
12. Runyon's
13. 112 Eatery
14. Pizza Luce
15. NOLO's
16. RISE Bagels



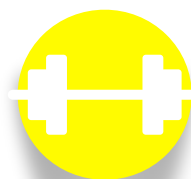
BREWERIES

1. Inbound Brewery
2. Fulton Brewery
3. Freehouse Brewery
4. Modist Brewery



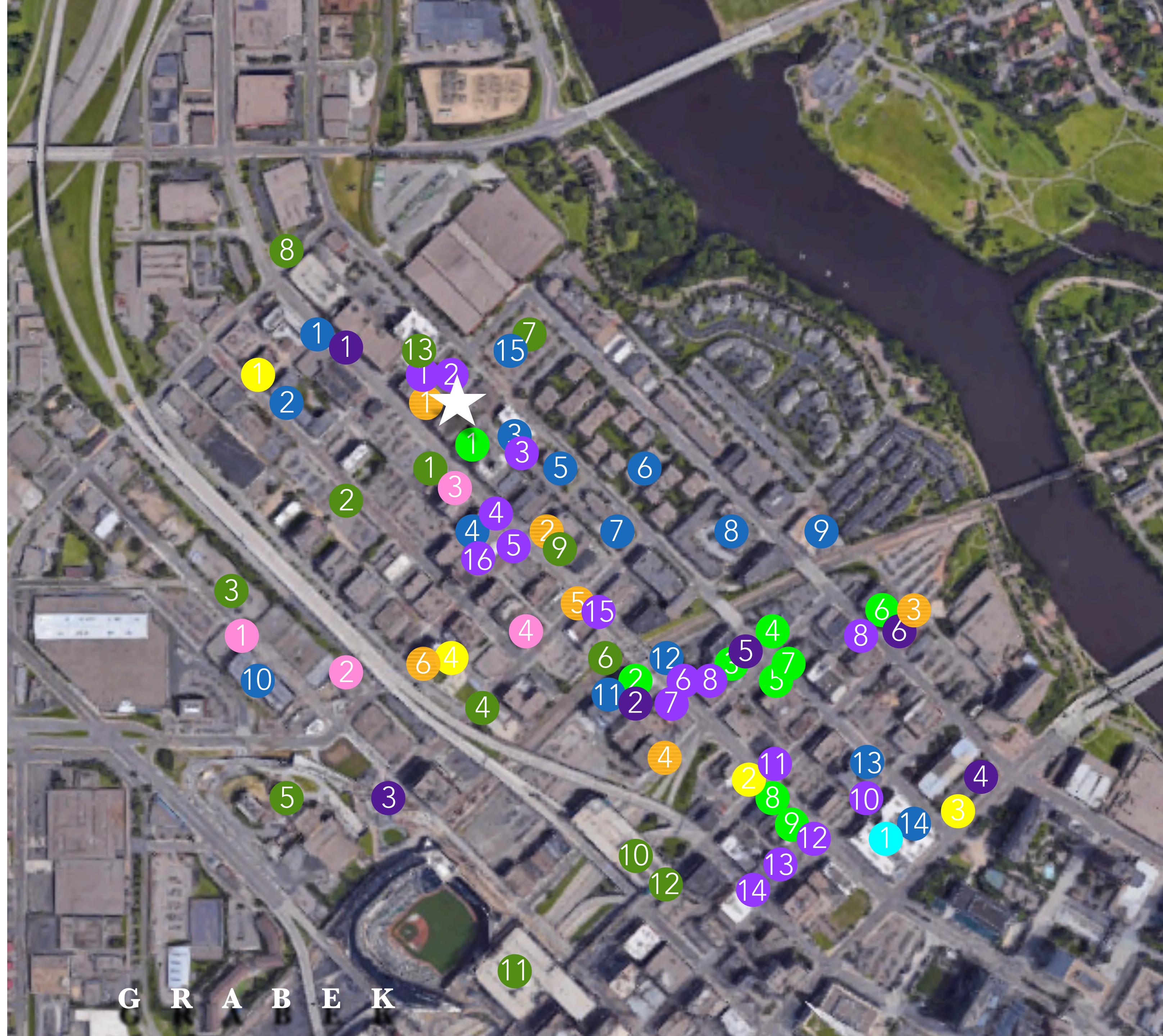
BARs

1. Parlour
2. The Loop
3. MarvelBar
4. Bev's Wine Bar
5. Basement Bar
6. First Draft



FITNESS

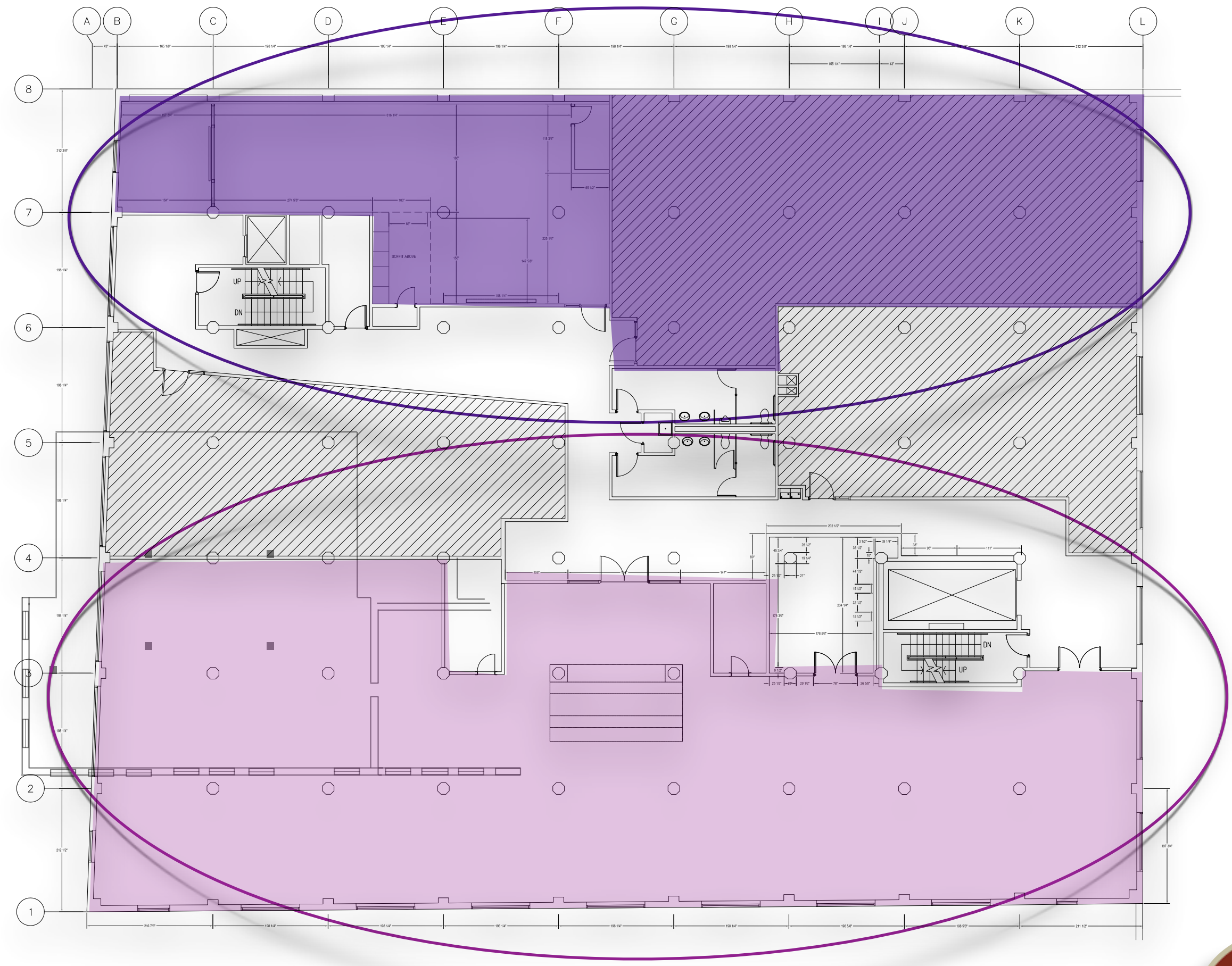
1. Alchemy
2. ALTR
3. Basecamp
4. Farrell's



GRABEEK



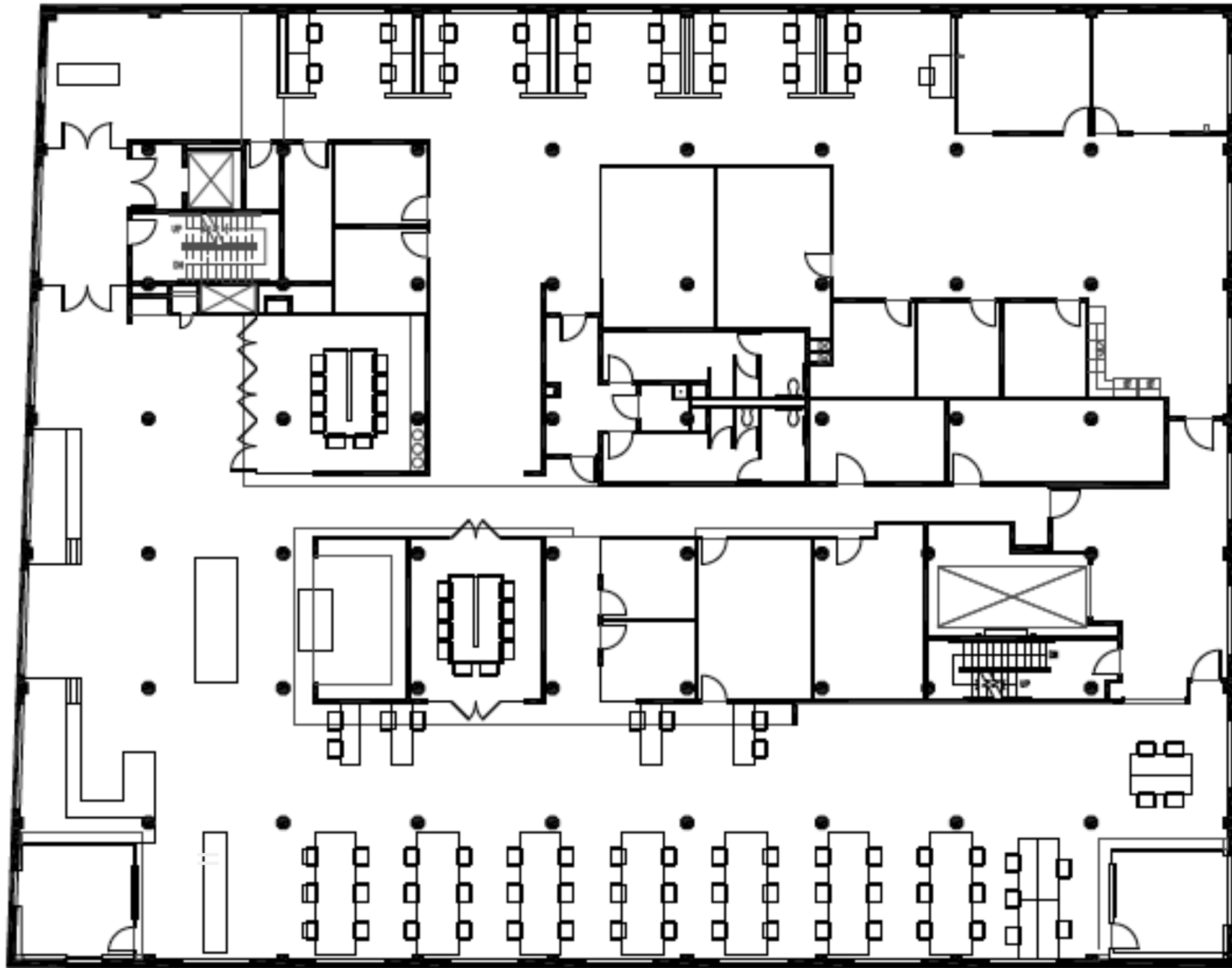
- SUITE 301 : 5,334 rsf, 2 PIDs
- SUITE 306 : 7,475 rsf, 6 PIDs
- SUITE 302 : 3,773 rsf, 2 PIDs



G R A B E K



4TH FLOOR : 17,471 rsf, 10 PIDs



*easily subdivided into 2 suites



Thank you.

G R A B E K