

2522 S Wilmington

Raleigh, NC 27603

OFFICE-RETAIL-FLEX FOR LEASE



PROPERTY SUMMARY

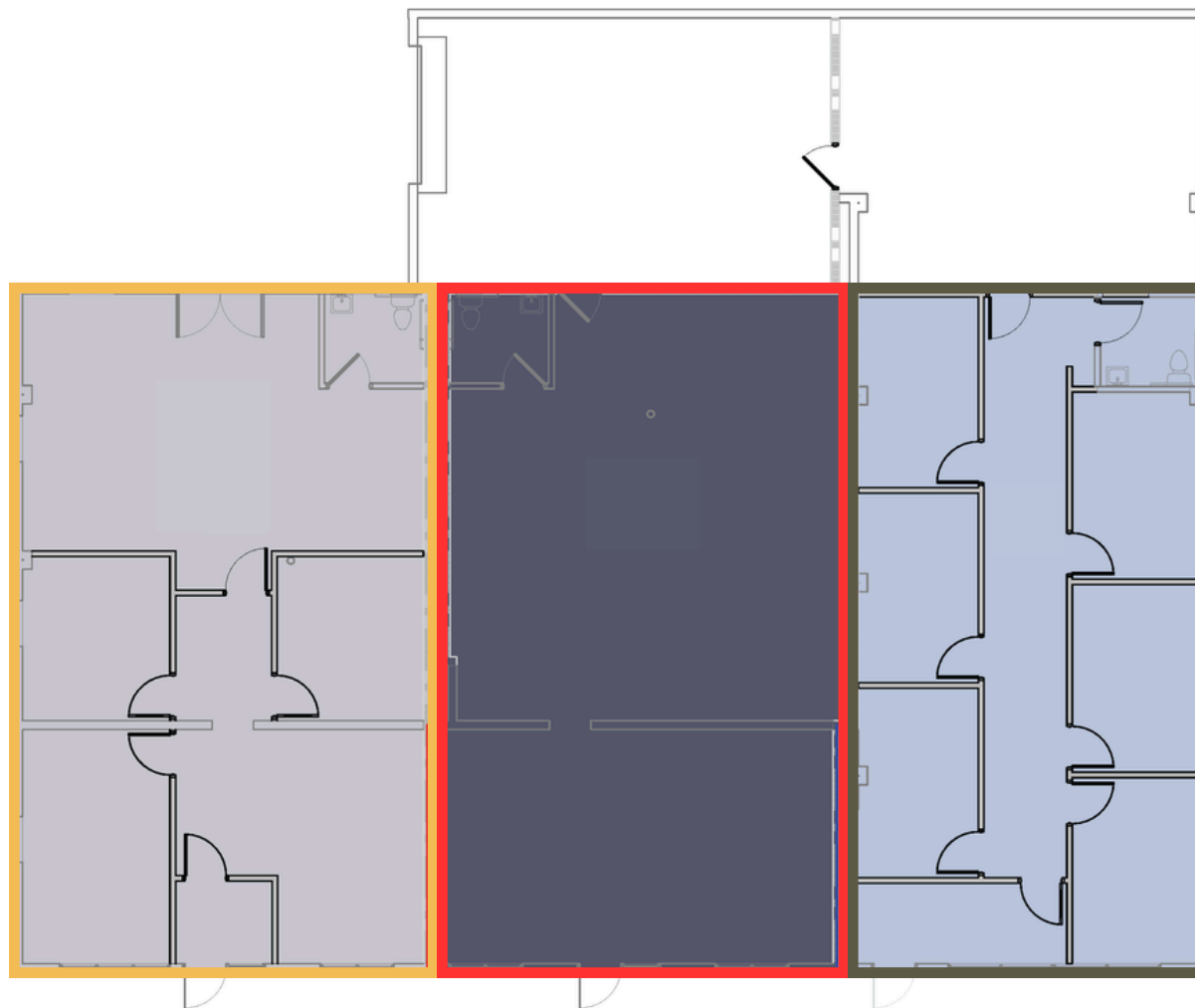
Address	2522 S Wilmington <ul style="list-style-type: none">• Ste 100 - 1,509 SF
Availabilities	<ul style="list-style-type: none">• Ste 110 - 1,491 SF• Ste 120 - 1,292 SF
Lease Rate	\$22.00 PSF NNN
TICAM	Est. \$6.00 PSF

Fully renovated, modern space positioned minutes from the emerging Downtown South district and the NC State Farmers Market. Offering from 1,292 - 4,292 SF with a flexible layout that works for office, showroom/retail, or light flex uses—plus easy, on-site surface parking for staff and customers.

HIGHLIGHTS

- Flexible plan suitable for office, retail/showroom, studio, or service uses
- Highly accessible S Wilmington St location near Downtown South & Farmers Market
- Quick connectivity to I-40/I-440 and Downtown Raleigh
- Convenient on-site parking with direct, ground-level entry

Floor Plan



Suite 100: 1,509 SF

Suite 110: 1,491 SF

Suite 120: 1,292 SF

DOWNTOWN
RALEIGH

DIX PARK

NC STATE
FARMERS
MARKET

Martin Luther King Jr. Blvd.

SITE

S Wilmington St.

40



CONTACT

Trent Ragland, Broker

(C) 919.815.8414

tragland@atlasstark.com

Tyler Christensen, Broker

(C) 828.999.9459

tchristensen@atlasstark.com



Atlas Stark Holdings LLC |

2020 Progress Ct, Suite 130A, Raleigh, NC

