



4372 N. Loop 1604 W.
Shavano Park
San Antonio, TX 78231

For Lease

Sanjay Misra
tm@qpmenterprises.com

PROPERTY INFORMATION

Overview

Pond Hill is a beautifully finished three-story office building located on the east bound access road of Loop 1604 between Military and Lockhill Selma with close proximity to IH-10. Its location offers convenient access to numerous food, entertainment and retail establishments.

Details

72,600 SF Gross Leasable Area

Availability: 15,256 RSF

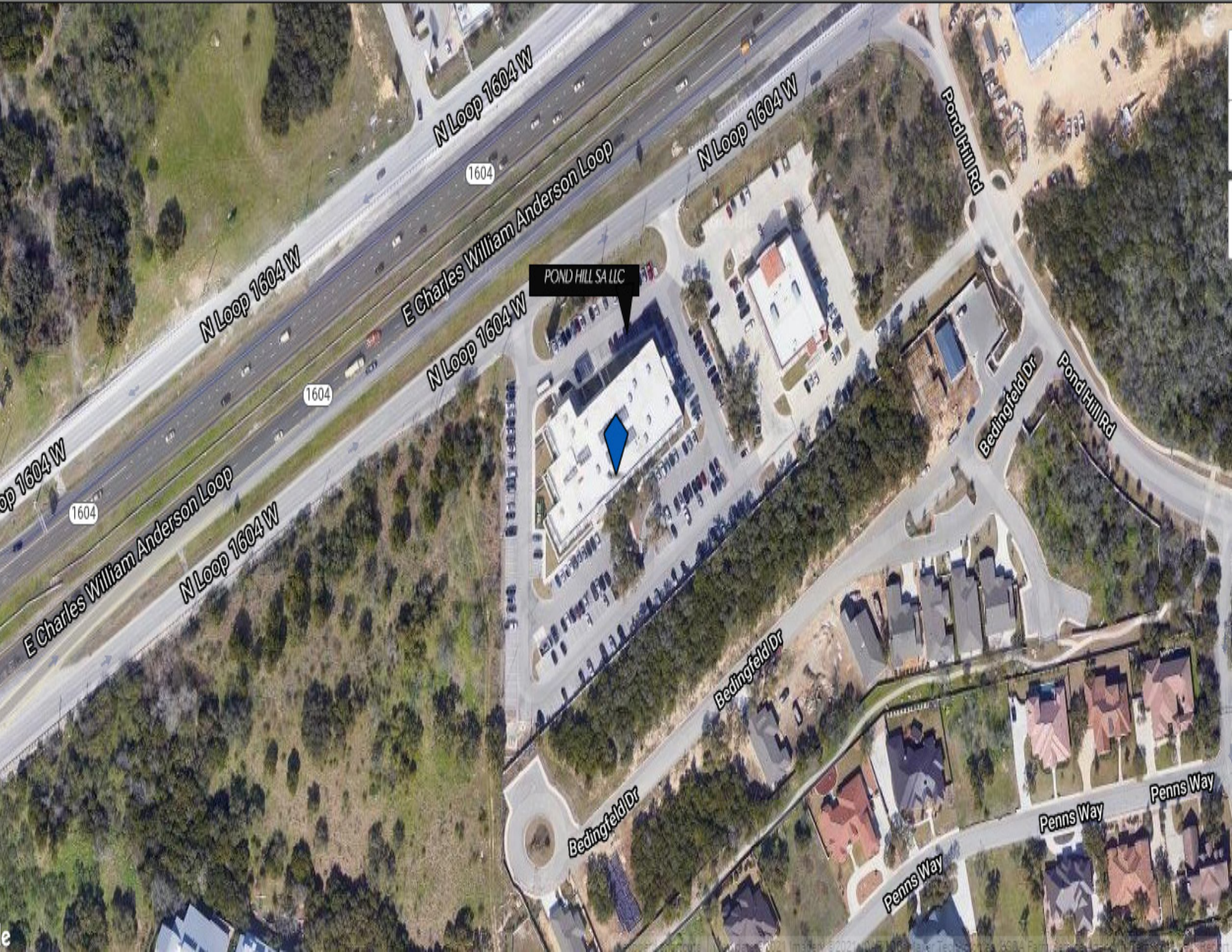
Parking Ratio: 3.44/1,000 SF

239 Parking Spaces

Spec Suites Ready for Occupancy







Willie's
FREETAIL Academy
FREETAIL SPORTS+OUTDOORS
Freddy's STEAKBURGERS
CHASE
PUSH'S CHICKEN

WINGST
Starbucks
McALISTER'S DELI

H BAPTIST EMERGENCY HOSPITAL

MILITARY

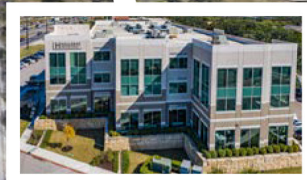
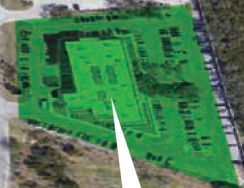
EXON Local COFFEE

LIVING SPACES

LOOP 1604

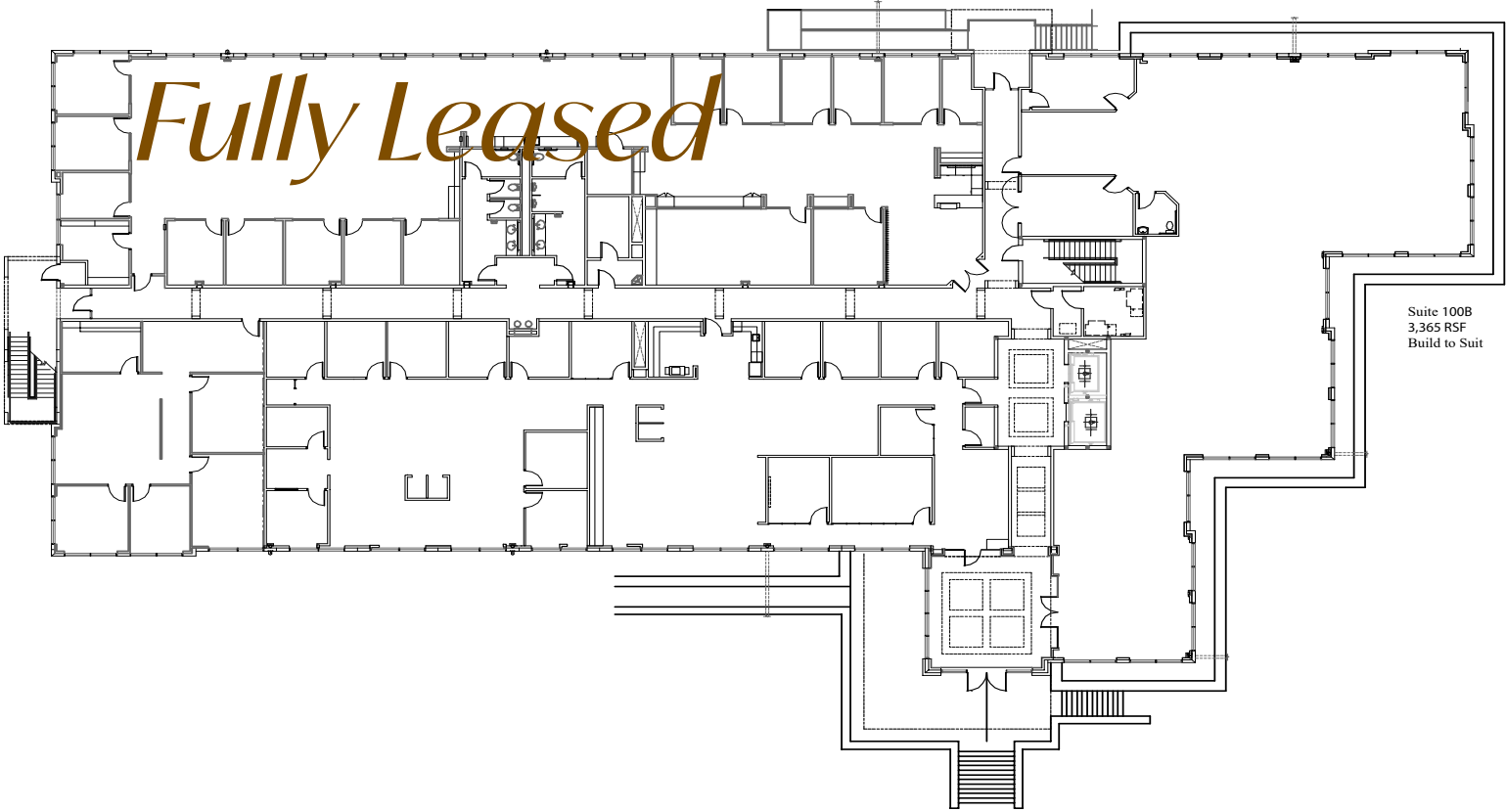
POND HILL RD

DISCOUNT TIRE



POND HILL
SHAVANO PARK, TEXAS

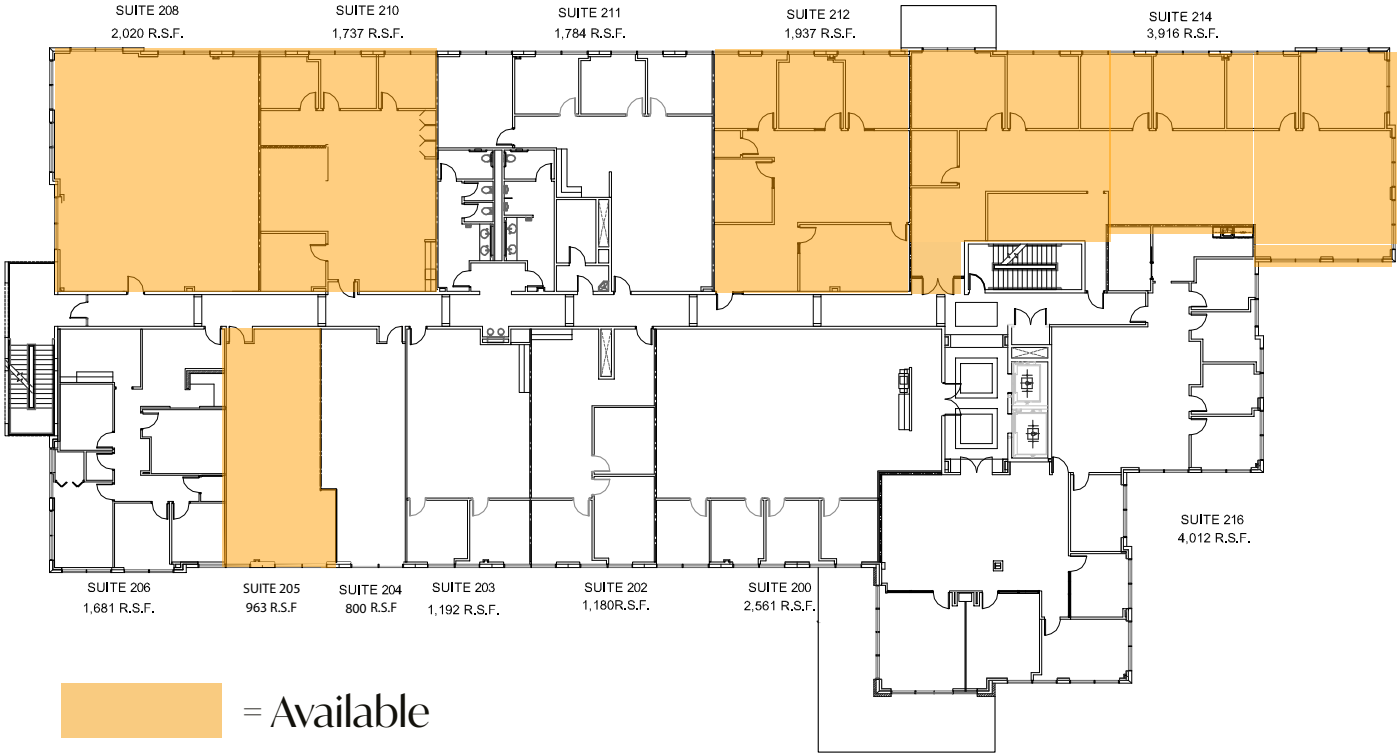
LEVEL 1



POND HILL

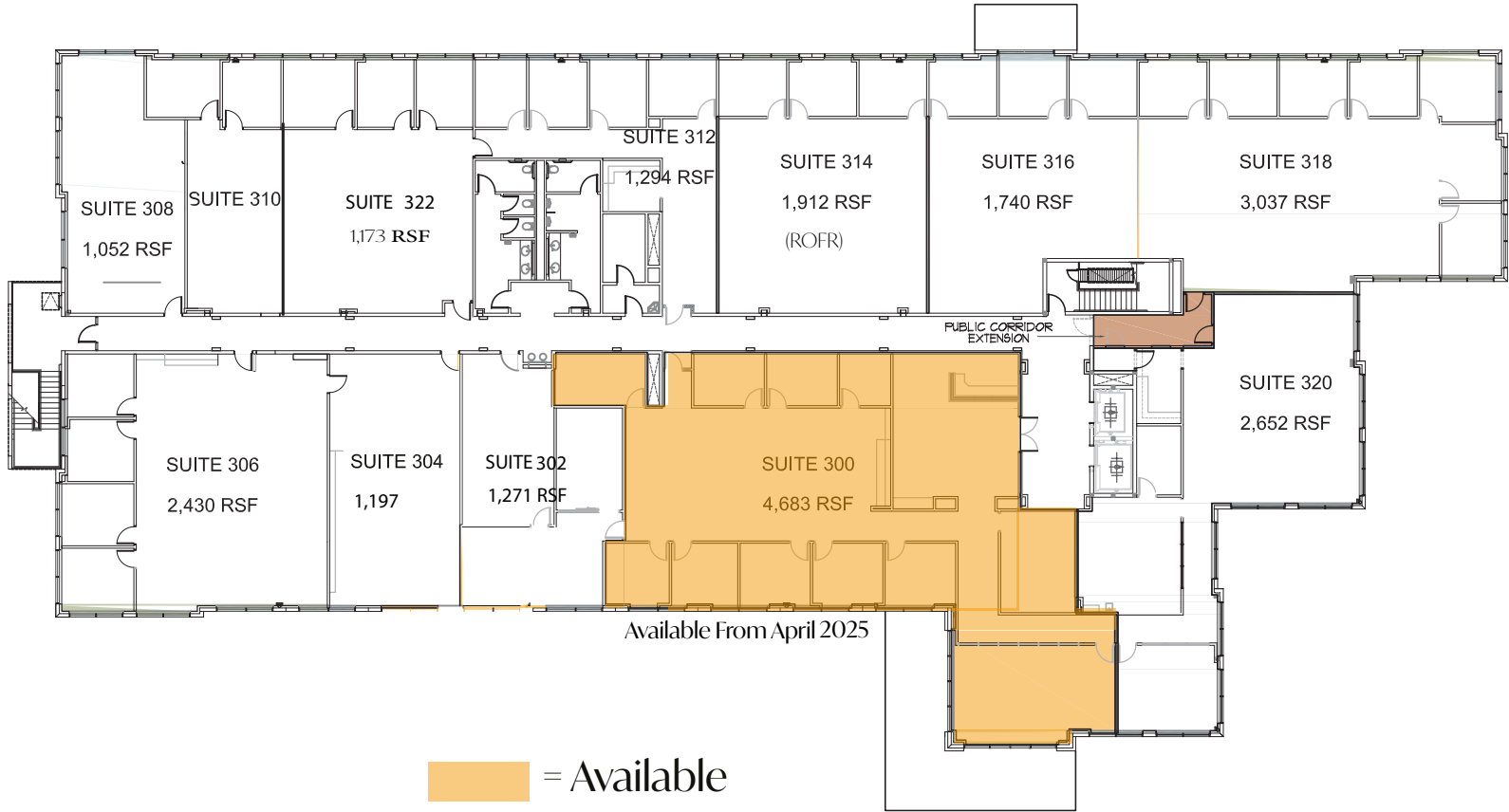
SHAVANO PARK, TEXAS

LEVEL 2



POND HILL
SHAVANO PARK, TEXAS

LEVEL 3





Sanjay Misra
tm@qpmenterprises.com

