



LEASE

125 N Euclid St

125 N EUCLID ST

Fullerton, CA 92832

PRESENTED BY:

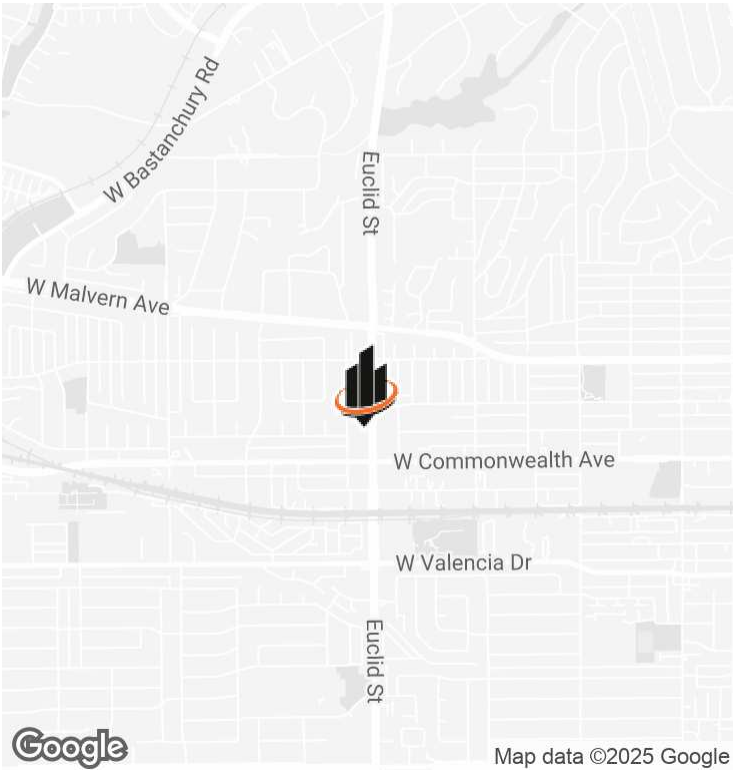
TRICIA MCCARROLL

O: 949.929.7583

tricia.mccarroll@svn.com

CalDRE #01840569

PROPERTY SUMMARY



OFFERING SUMMARY

LEASE RATE:	\$33.00 SF/yr (NNN)
	\$2.75 SF/mo (NNN)
AVAILABLE SF:	2,350 SF
LOT SIZE:	11,740 SF
BUILDING SIZE:	2,350 SF

PROPERTY DESCRIPTION

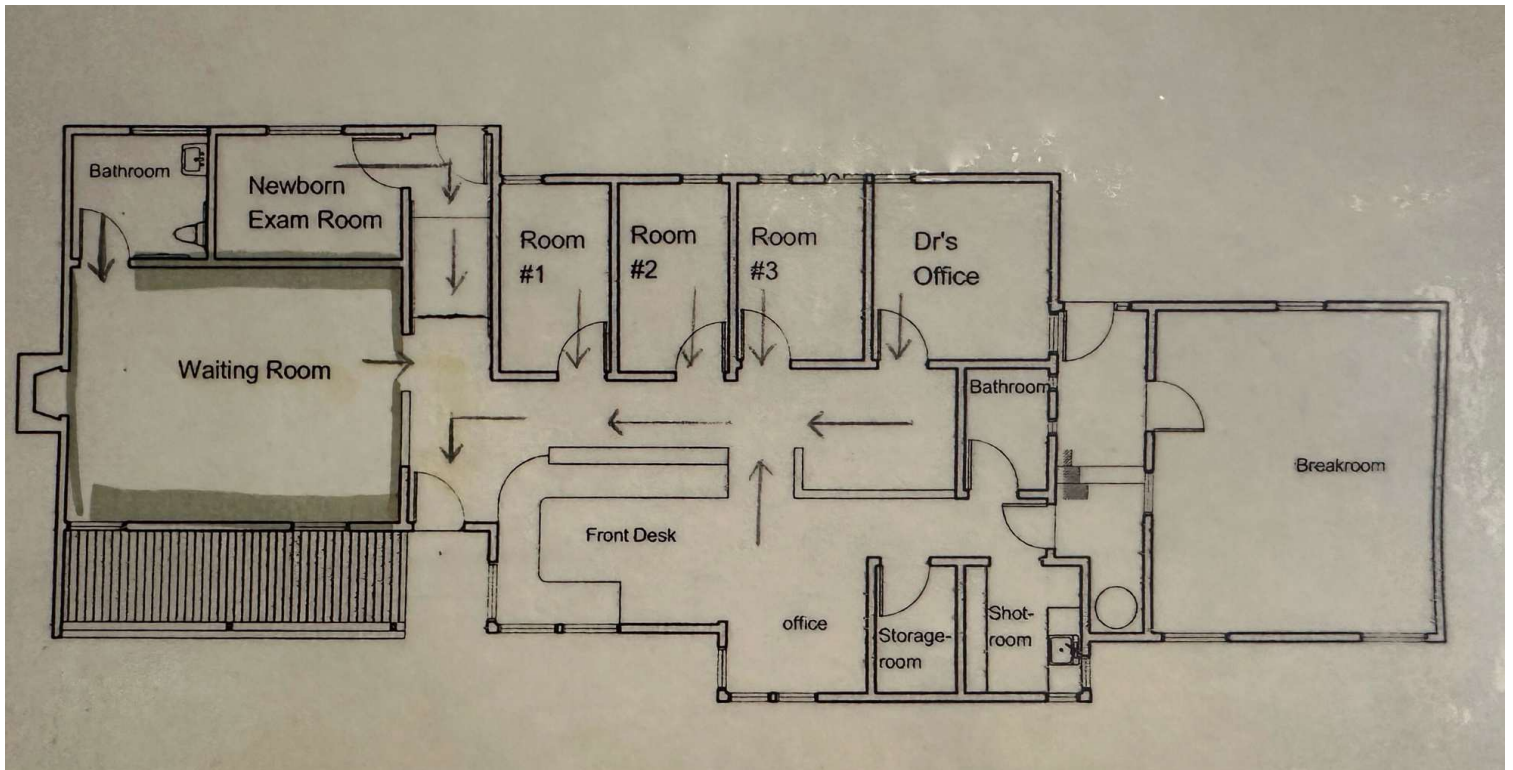
Fully improved for medical use, this freestanding building fronts Euclid and offers visible signage opportunities. Ideal for medical, dental, or office tenants, and no CUP is required for veterinary use. Located next to retail shops, the property provides excellent visibility, convenient access, and a strong professional presence. Perfect for tenants seeking a ready-to-use space in a high-traffic, well-connected location.

PROPERTY HIGHLIGHTS

- 3-4 exam rooms
- Doctor's office / private office
- Reception and waiting area
- 2 restrooms
- Breakroom / staff area
- Outside common area

TRICIA MCCARROLL
O: 949.929.7583
tricia.mccarroll@svn.com
CalDRE #01840569

ADDITIONAL PHOTOS



TRICIA MCCARROLL

O: 949.929.7583

tricia.mccarroll@svn.com

CalDRE #01840569