

SHOPPES AT DEER CREEK WOODS

7348 W 135TH STREET | OVERLAND PARK, KS

PEAK
Real Estate Partners



PROPERTY HIGHLIGHTS:

- **1,931 SF retail for lease (7348 W 135th Street)**
- Excellent visibility to over 49,300 cars per day on 135th Street
- Convenient access to 69 Hwy and Metcalf Avenue
- Across from Corbin Park – a top retail/restaurant destination in South Johnson County
- Join Panda Express, Supplement Superstore, Fed Ex, and T-Mobile



KIMBERLY TRANBARGER
PARTNER



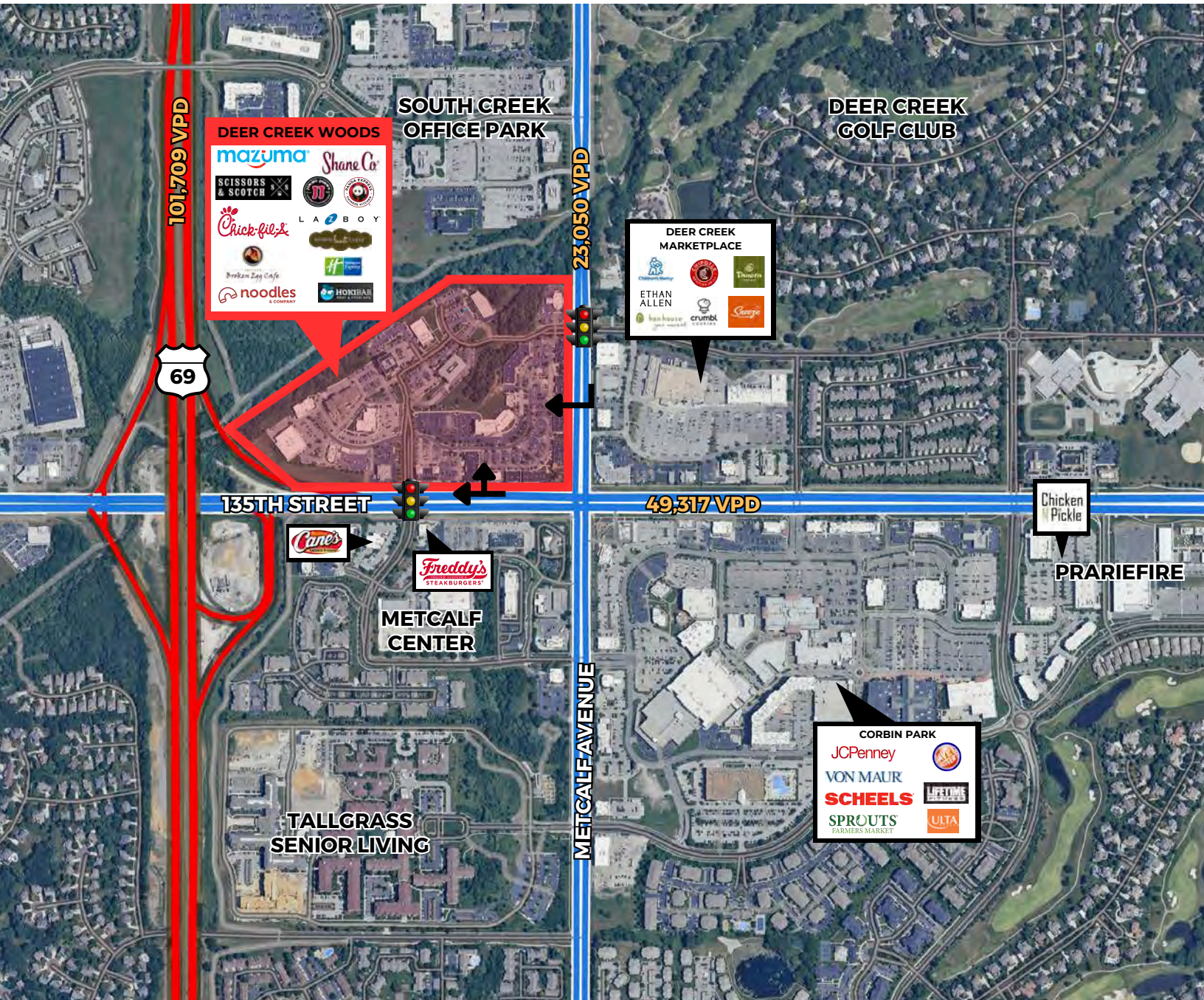
(913) 406-8875



KIMBERLY@PEAKREP.COM

PROPERTY AERIAL

7348 W 135TH STREET | DEER CREEK WOODS



POPULATION	
1-MILE	13,724
3-MILE	93,669
5-MILE	204,243



DAYTIME POPULATION	
1-MILE	15,812
3-MILE	79,271
5-MILE	201,849



AVERAGE HOUSEHOLD INCOME	
1-MILE	\$147,387
3-MILE	\$183,129
5-MILE	\$172,636

PROPERTY AERIAL

7348 W 135TH STREET | DEER CREEK WOODS

PEAK
Real Estate Partners

