



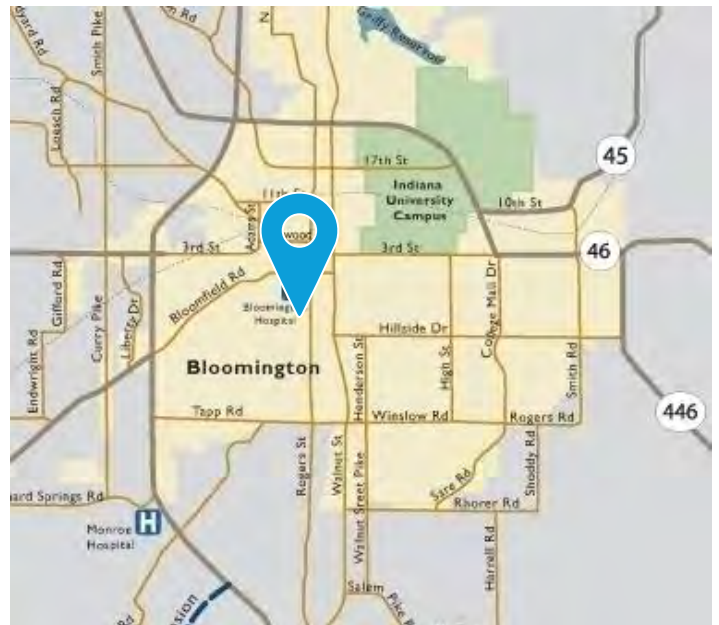
For Sale

7,000 SF building with loading dock

803 S. Madison Street
Bloomington, IN

Property Highlights

- 7,000 SF building on 0.38 acres
- Fully air-conditioned space
- Heavy power: 800 amp, three phase, 120/208
- Wet sprinkler system
- Ceiling heights: 17' (peak), 15.5' (eave), 10.25' (ducts)
- No interior columns
- Zoned RH in the City of Bloomington
- In the path of progress: adjacent to Hopewell neighborhood and B-Line Trail
- **Sale Price: \$750,000**



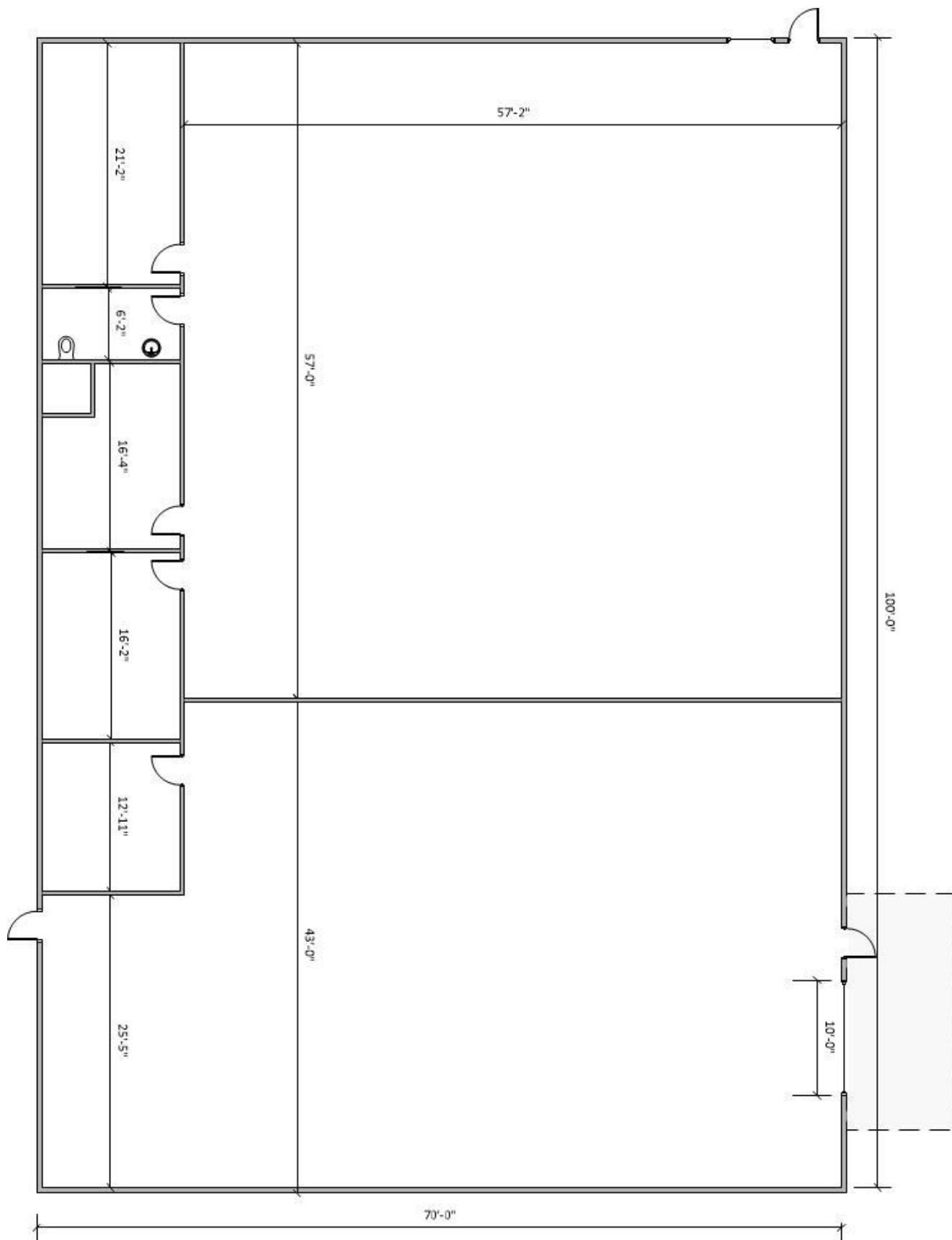
Dave Harstad

+1 812 822 1122

dave.harstad@colliers.com

Colliers Bloomington
colliers.com

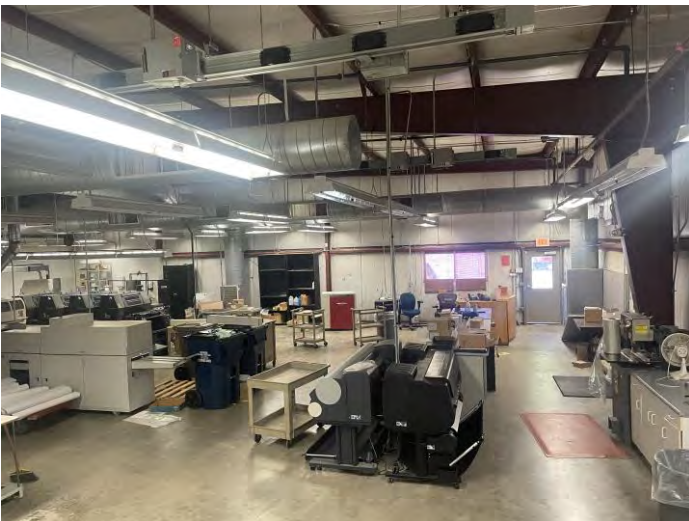
Floor Plan







Interior



Dave Harstad
+1 812 822 1122
dave.harstad@colliers.com





Zoning

(2) Dimensional Standards

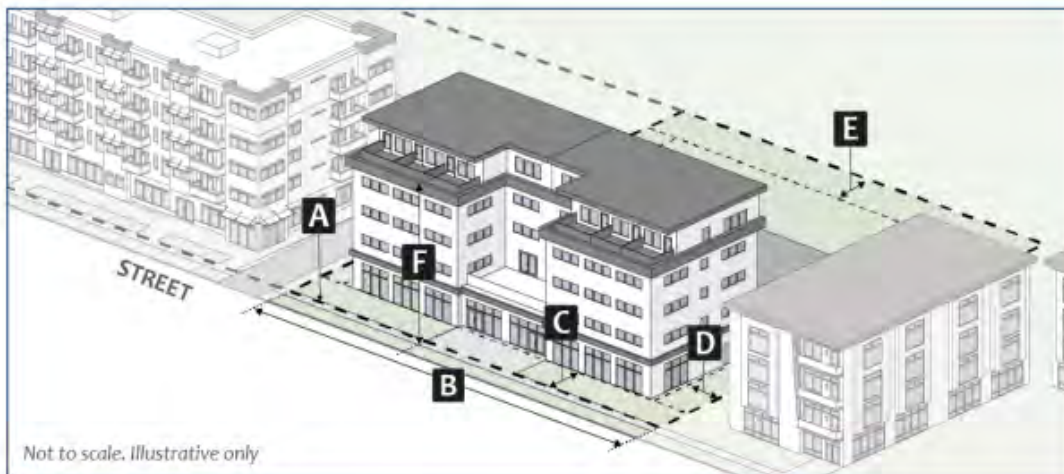
The following table is a summary of the district-specific dimensional standards. Additional standards from Section 20.04.010(Dimensional Standards) also apply.

Table 02-7: RH District Dimensional Standards

Lot Dimensions (Minimum, only for lots created after the effective date)		Multifamily Dwelling	Single-Family, Duplex, Triplex, or Fourplex Dwelling
A	Lot area	5,000 square feet (0.115 acres)	R4 district standards apply
B	Lot width	50 feet	
Building Setbacks (Minimum)			
C	Front	15 feet	R4 district standards apply
	Attached front-loading garage or carport	25 feet [1]	
D	Side	10 feet [2]	
E	Rear	[2] 15 feet	
Other Standards			
	Front parking setback (minimum)	20 feet behind the primary structure's front building wall	R4 district standards apply
	Impervious surface coverage (maximum)	65%	
	Landscape area (minimum)	35%	
F	Primary structure height (maximum)	5 stories, not to exceed 63 feet [2] [3]	
	Accessory structure height (maximum)	20 feet	

Notes:

- [1] Or equal to the setback of the primary structure, whichever is greater.
- [2] Buildings abutting a property in the R1, R2, R3, or R4 zoning district shall comply with the standards in Section 20.04.070(d)(5) (Neighborhood Transition Standards).
- [3] See Section 20.04.110 (Incentives) for alternative standards.





Zoning

20.03.020 Allowed Use Table

Table 03-1: Allowed Use Table

P = permitted use, C = conditional use permit, A = accessory use, T = temporary use, Uses with an * = use-specific standards apply

Additional uses may be permitted, prohibited, or require conditional use approval in Downtown Character Overlays pursuant to Section 20.03.010(e).

Use	Residential							Mixed-Use							Non-Residential		Use-Specific Standards	
	R1	R2	R3	R4	RM	RH	RMH	MS	MN	MM	MC	ME	MI	MD	MH	EM		PO
RESIDENTIAL USES																		
Household Living																		
Dwelling, single-family (detached)	P	P	P	P	P*	P*	P	P	P	P*	P*	P*			P*			20.03.030(b)(1)
Dwelling, single-family (attached)		P*	P*	P*	P*	P*		P*	P*	P*					P*			20.03.030(b)(2)
Dwelling, duplex	C*	C*	C*	P*	P*	P*		P*	P*	P*	C*			P*				20.03.030(b)(3)
Dwelling, triplex				C*	P*	P*		P*	P*	P*	C*			P*				20.03.030(b)(4)
Dwelling, fourplex				C*	P*	P*		P*	P*	P*	P*			P*				20.03.030(b)(4)
Dwelling, multifamily				C*	P	P		P	P*	P*	P	P*	C	P*				20.03.030(b)(5)
Dwelling, live/work				C*	P*	P*			P*	P*	P*			P*				20.03.030(b)(6)
Dwelling, cottage development	C*	C*	C*	C*	C*	C*	C*		C*									20.05.030(b)(7)
Dwelling, mobile home							P*											20.05.030(b)(8)
Manufactured home park							P*											20.05.030(b)(9)
Group Living																		
Assisted living facility				C	P	P			C	P	P		P	P	P			
Continuing care retirement facility				C	P	P			C	P	P		P	P	P			
Fraternity or sorority house								P*					P*					20.03.030(b)(10)
Group care home, FHAA small	P*	P*	P*	P*	P*	P*	P*	P*	P*	P*	P*		P*	P*	P*			20.03.030(b)(11)
Group care facility, FHAA large				P*	P*	P*	P*	P*	P*	P*	P*	P*	P*	P*	P*			20.03.030(b)(11)
Nursing or convalescent home				C	P	P			C	P	P	P	P	P	P			
Opioid rehabilitation home, small	P*	P*	P*	P*	P*	P*	P*	P*	P*	P*	P*		P*		P*			20.03.030(b)(11)
Opioid rehabilitation home, large				P*	P*	P*	P*	P*	P*	P*	P*	P*	P*	P*	P*			20.03.030(b)(11)
Residential rooming house					P*	P*		P	P*	P	P	C*						20.03.030(b)(12)
Student housing or dormitory					C*	P*		P*	C*	P*	P*		P*	C*				20.03.030(b)(13)
Supportive housing, small						C			C	C	C		C	C	C			
Supportive housing, large										C	C		C	C	C			
PUBLIC, INSTITUTIONAL, AND CIVIC USES																		
Community and Cultural Facilities																		
Art gallery, museum, or library				C*	C	C			P	P	P		P	P				20.03.030(c)(1)



Zoning

Chapter 20.03: Use Regulations 20.03.020 Allowed Use Table

Table 03-1: Allowed Use Table

P = permitted use, C = conditional use permit, A = accessory use, T = temporary use, Uses with an * = use-specific standards apply
Additional uses may be permitted, prohibited, or require conditional use approval in Downtown Character Overlays pursuant to Section 20.03.010(e).

Use	Residential							Mixed-Use							Non-Residential		Use-Specific Standards	
	R1	R2	R3	R4	RM	RH	RMH	MS	MN	MM	MC	ME	MI	MD	MH	EM		PO
Cemetery or mausoleum													P					
Club or lodge										P	P			P				
Community center		C	C	C	P*	P*			P	P	P		P	P				20.03.030(c)(2)
Conference or convention center											P	P	P	P				
Crematory											C	C				C		
Day-care center, adult or child	A*	A*	A*	A*	C*	C*	C*	P*	P*	P*	P*	C*	C*	P*	P*	A*		20.03.030(c)(3)
Government service facility										P	P	P	P	P		P		
Jail or detention facility													C*			C*		20.03.030(c)(4)
Meeting, banquet, or event facility										P	P	P	P	P				
Mortuary										P	P		P					
Park	P	P	P	P	P	P	P	P	P	P	P	P	P	P	P	P	P	
Place of worship	C	C	C	C	C	C	C	C	C	P	P	C	P	P	C			
Police, fire, or rescue station	C	C	C	C	C	C	C	C	C	P	P	P	P	P	P	P		
Urban agriculture, noncommercial	P*	P*	P*	P*	P*	P*	P*	P*	P*	P*	P*	P*	P*	P*	P*	P*		20.03.030(c)(5)
Educational Facilities																		
School, college or university												C	C	P				
School, public or private	C*	C*	C*	C*	C*	C*	C*	C*	C*	P*	P*	C*	P*	P*				20.03.030(c)(6)
School, trade or business										P	P	P	P	P		P		
Healthcare Facilities																		
Hospital													C		C			
Medical clinic									P	P	P	P	P	P	P			
Methadone treatment facility											P*	C*			C*			20.03.030(c)(7)
Opioid rehabilitation facility											C*	C*	C*		C*	C*		20.03.030(c)(7)
COMMERCIAL USES																		
Agricultural and Animal Uses																		
Crops and pasturage	P*	A*	A*	A*	A*	A*	A*	A*	A*	A*	A*	A*		A*	A*			20.03.030(d)(1)
Kennel												C*				C*		20.03.030(d)(2)
Orchard or tree farm, commercial	P	A*	A*	A*	A*	A*	A*	A*	A*	A*	A*	A*	A*	A*	A*	P		20.03.030(d)(3)
Pet grooming									P*	P*	P*			P*		P*		20.03.030(d)(4)
Plant nursery or greenhouse, commercial	C									P	P	P						
Veterinarian clinic									C*	P*	P*				P*			20.03.030(d)(4)





Zoning

Chapter 20.03: Use Regulations 20.03.020 Allowed Use Table

Table 03-1: Allowed Use Table

P = permitted use, C = conditional use permit, A = accessory use, T = temporary use, Uses with an * = use-specific standards apply

Additional uses may be permitted, prohibited, or require conditional use approval in Downtown Character Overlays pursuant to Section 20.03.010(e).

Use	Residential							Mixed-Use							Non-Residential		Use-Specific Standards	
	R1	R2	R3	R4	RM	RH	RMH	MS	MN	MM	MC	ME	MI	MD	MH	EM		PO
Entertainment and Recreation																		
Amenity center	P*	P*	P*	P*	P	P	P	A	P	P	P	P	P	P				20.03.030(d)(5)
Country club	C										P							
Recreation, indoor			P*	P*	P*	P*		A	C	P	P			P				20.03.030(d)(6)
Recreation, outdoor	C										C	P	P			C		
Sexually oriented business										C*	P*					P*		20.03.030(d)(7)
Stadium													C					
Food, Beverage, and Lodging																		
Bar or dance club								P		P	P			P				
Bed and breakfast	C*	C*	C*	C*	C*	P			P	P	P			P				20.03.030(d)(8)
Brewpub, distillery, or winery								P*	P*	P*	P*	P*		P*		P*		20.03.030(d)(9)
Hotel or motel								P			P	C	P					
Restaurant					C*	C*		P	P	P	P	P*	A	P	A	A		20.03.030(d)(10)
Office, Business, and Professional Services																		
Artist studio or workshop	A*	A*	A*	A*	P	P			P	P	P	C	C	P				20.03.030(d)(11)
Check cashing										C	C							
Financial institution								P		P	P	C		P		A		
Fitness center, small					A	A		P	P	P	P	A	A	P	A	A		
Fitness center, large								P	P	P	P			P	A			
Office									P	P	P	P	P	P	P*	P		20.03.030(d)(12)
Personal service, small					A	A		P	P	P	P	P	C	P				
Personal service, large								C	C	P	P	P		P				
Tattoo or piercing parlor										P	P			P				
Retail Sales																		
Building supply store										P	P					P		
Firearm Sales										P	P	P						
Grocery or supermarket					A	A		P	P	P	P	P		P				
Liquor or tobacco sales										P	P			P				
Pawn shop										P	P			P				
Retail sales, small					C	C		P	P	P	P	P		P				
Retail sales, medium								P		P	P	P		P				
Retail sales, large											P			P				
Retail sales, big box											P					P		
Vehicles and Equipment																		
Equipment sales or rental									P*	P*	P*			P*		P*		20.03.030(d)(13)



Zoning

Table 03-1: Allowed Use Table

P = permitted use, C = conditional use permit, A = accessory use, T = temporary use, Uses with an * = use-specific standards apply
Additional uses may be permitted, prohibited, or require conditional use approval in Downtown Character Overlays pursuant to Section 20.03.010(e).

Use	Residential							Mixed-Use							Non-Residential		Use-Specific Standards	
	R1	R2	R3	R4	RM	RH	RMH	MS	MN	MM	MC	ME	MI	MD	MH	EM		PO
Transportation terminal										P	P		P			P		
Vehicle fleet operations, small										P	P					P		
Vehicle fleet operations, large											P					P		
Vehicle fuel station										P*	P*	P*		P*		P*		20.03.030(d)(14)
Vehicle impound storage																P*		20.03.030(d)(15)
Vehicle parking garage					A	A		A		P	P	P	A	P*	C			20.03.030(d)(16)
Vehicle repair, major											P*					P*		20.03.030(d)(17)
Vehicle repair, minor									C*	P*	P*			P*				20.03.030(d)(17)
Vehicle sales or rental										P	P	P						
Vehicle wash										P*	P*					P*		20.03.030(d)(18)
EMPLOYMENT USES																		
Manufacturing and Processing																		
Commercial laundry										P	P					P		
Food production or processing										C	C	C				C		
Manufacturing, artisan									P	P	P	C		P		P		
Manufacturing, light												P		C		P		
Manufacturing, heavy																C		
Salvage or scrap yard																C		
Storage, Distribution, or Warehousing																		
Bottled gas storage or distribution																P		
Contractor's yard											P	C				P		
Distribution, warehouse, or wholesale facility											C	C				P		
Storage, outdoor													P*			P*	A*	20.03.030(e)(1)
Storage, self-service								A*	C*	P*	P*	P*	A*	P*		P*		20.03.030(e)(2)
Resource and Extraction																		
Gravel, cement, or sand production																C*		20.03.030(e)(3)
Quarry																C*		20.03.030(e)(3)
Stone processing																P		
UTILITIES AND COMMUNICATION																		
Communication facility	C*										C*	C*	P	C*	C*	P		20.03.030(f)(1)
Solar collector, ground- or building-mounted	A*	A*	A*	A*	A*	A*	A*	A*	A*	A*	A*	A*	A*	A*	A*	P		20.03.030(f)(2)





Zoning

Chapter 20.03: Use Regulations 20.03.030 Use-Specific Standards

Table 03-1: Allowed Use Table

P = permitted use, C = conditional use permit, A = accessory use, T = temporary use, Uses with an * = use-specific standards apply

Additional uses may be permitted, prohibited, or require conditional use approval in Downtown Character Overlays pursuant to Section 20.03.010(e).

Use	Residential							Mixed-Use								Non-Residential		Use-Specific Standards
	R1	R2	R3	R4	RM	RH	RMH	MS	MN	MM	MC	ME	MI	MD	MH	EM	PO	
Utility substation and transmission facility	P*	P*	P*	P*	P*	P*	P*	P*	P*	P*	P*	P*	P*	P*	P*	P*		20.03.030(f)(3)
Wind energy system, large												P*				P*		20.03.030(f)(4)
Wind energy system, small	A*	A*	A*	A*	A*	A*	A*	A*	A*	A*	A*	A*	A*	A*	A*	P*	P*	20.03.030(f)(5)
ACCESSORY USES																	20.03.030(g)(1)	
Chicken flock	A*	A*	A*	A*	A*	A*	A*	A*	A*	A*	A*	A*	A*	A*			P*	20.03.030(g)(2)
Detached garage	A*	A*	A*	A*	A*	A*	A*	A*	A*	A*								20.03.030(g)(3)
Drive-through										A*	A							20.03.030(g)(4)
Dwelling, accessory unit	A*	A*	A*	A*	A*	A*	A*	A*	A*	A*	A*	A*		A*	A*			20.03.030(g)(5)
Electric vehicle charging facility	A	A	A	A	A	A	A	A	A	A	A	A	A	A	A	A	A	
Greenhouse, noncommercial	A	A	A	A	A	A	A	A	A	A	A	A	A	A	A	A	A	
Home occupation	A*	A*	A*	A*	A*	A*	A*	A*	A*	A*	A*	A*	A*	A*	A*			20.03.030(g)(6)
Outdoor retail and display									T*	T*	T*			T*		A*		20.03.030(g)(7)
Outdoor trash and recyclables receptacles					A*	A*	A*	A*	A*	A*	A*	A*	A*	A*	A*	A*		20.03.030(g)(8)
Recycling drop-off, self-serve					A	A		A	A	A	A	A	A	A	A	A		
Swimming pool	A*	A*	A*	A*	A*	A*	A*	A*	A*	A*	A*	A*	A*	A*	A*	A*	A*	20.03.030(g)(9)
TEMPORARY USES																	20.03.030(h)(1)	
Book buyback								T*	T*	T*	T*		T*	T*				20.03.030(h)(2)
Construction support activities	T*	T*	T*	T*	T*	T*	T*	T*	T*	T*	T*	T*	T*	T*	T*	T*	T*	20.03.030(h)(3)
Farm produce sales	T*	T*	T*	T*	T*	T*	T*	T*	T*	T*	T*	T*	T*	T*	T*			20.03.030(h)(4)
Real estate sales or model home	T*	T*	T*	T*	T*	T*	T*	T*	T*	T*	T*	T*	T*	T*	T*	T*		20.03.030(h)(5)
Seasonal sales								T*	T*	T*	T*	T*	T*	T*	T*			20.03.030(h)(6)
Special event	T*	T*	T*	T*	T*	T*	T*	T*	T*	T*	T*	T*	T*	T*	T*		T*	23.03.030(h)(7)