

THE CORNELL BUILDING

12923 NW Cornell Road, Portland, OR 97229

FOR LEASE



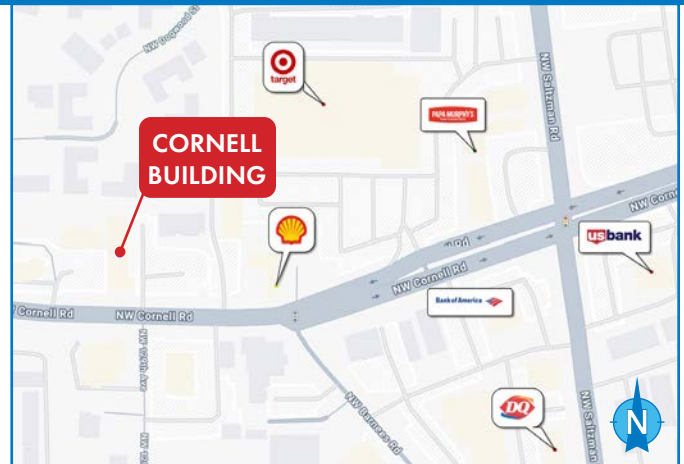
COMMERCIAL SPACE AVAILABLE FOR LEASE

DETAILS

- Rate: \$30.00 PSF + NNN
- Suite 102: ± 1,130 SF
 - Turn-key space, newly updated
 - Lots of natural light
 - Three separate offices and two large common areas
 - Two door entry; one from parking lot & one from shared corridor
- Suite 202: ± 1,037 SF
 - Turn-key space for hair salon or office/service
 - Space accessible by elevator or stairs

FEATURES

- Elevator serviced building
- ADA accessible
- ± 9,700 VPD off NW Cornell Rd



DEMOGRAPHICS

	1 MILE	3 MILES
Population	15,793	129,665
Households	6,775	52,987
Median Age	38.1	38.1
Median Household Income	\$121,109	\$131,901
Daytime Employees	4,269	52,449

09.25.2025

For more information or a property tour, please contact:

MALLORIE GOODY

503.416.8422

MallorieG@norris-stevens.com

ELISSA VANARSDALL

503.225.8439

ElissaV@norris-stevens.com

Norris & Stevens

INVESTMENT REAL ESTATE SERVICES



Information contained herein has been obtained from others and considered to be reliable; however, a prospective purchaser or lessee is expected to verify all information to his/her own satisfaction.

900 SW 5th Avenue • 17th Floor • Portland, OR 97204
503.223.3171 • norris-stevens.com

THE CORNELL BUILDING

12923 NW Cornell Road, Portland, OR 97229

FOR LEASE

PHOTOS - SUITE 102



For more information or a property tour, please contact:

MALLORIE GOODY
503.416.8422
MallorieG@norris-stevens.com

ELISSA VANARSDALL
503.225.8439
ElissaV@norris-stevens.com

Norris & Stevens

INVESTMENT REAL ESTATE SERVICES



Information contained herein has been obtained from others and considered to be reliable; however, a prospective purchaser or lessee is expected to verify all information to his/her own satisfaction.

900 SW 5th Avenue • 17th Floor • Portland, OR 97204
503.223.3171 • norris-stevens.com

THE CORNELL BUILDING

12923 NW Cornell Road, Portland, OR 97229

FOR LEASE

PHOTOS - SUITE 202



For more information or a property tour, please contact:

MALLORIE GOODY
503.416.8422
MallorieG@norris-stevens.com

ELISSA VANARSDALL
503.225.8439
ElissaV@norris-stevens.com



Information contained herein has been obtained from others and considered to be reliable; however, a prospective purchaser or lessee is expected to verify all information to his/her own satisfaction.

Norris & Stevens

INVESTMENT REAL ESTATE SERVICES

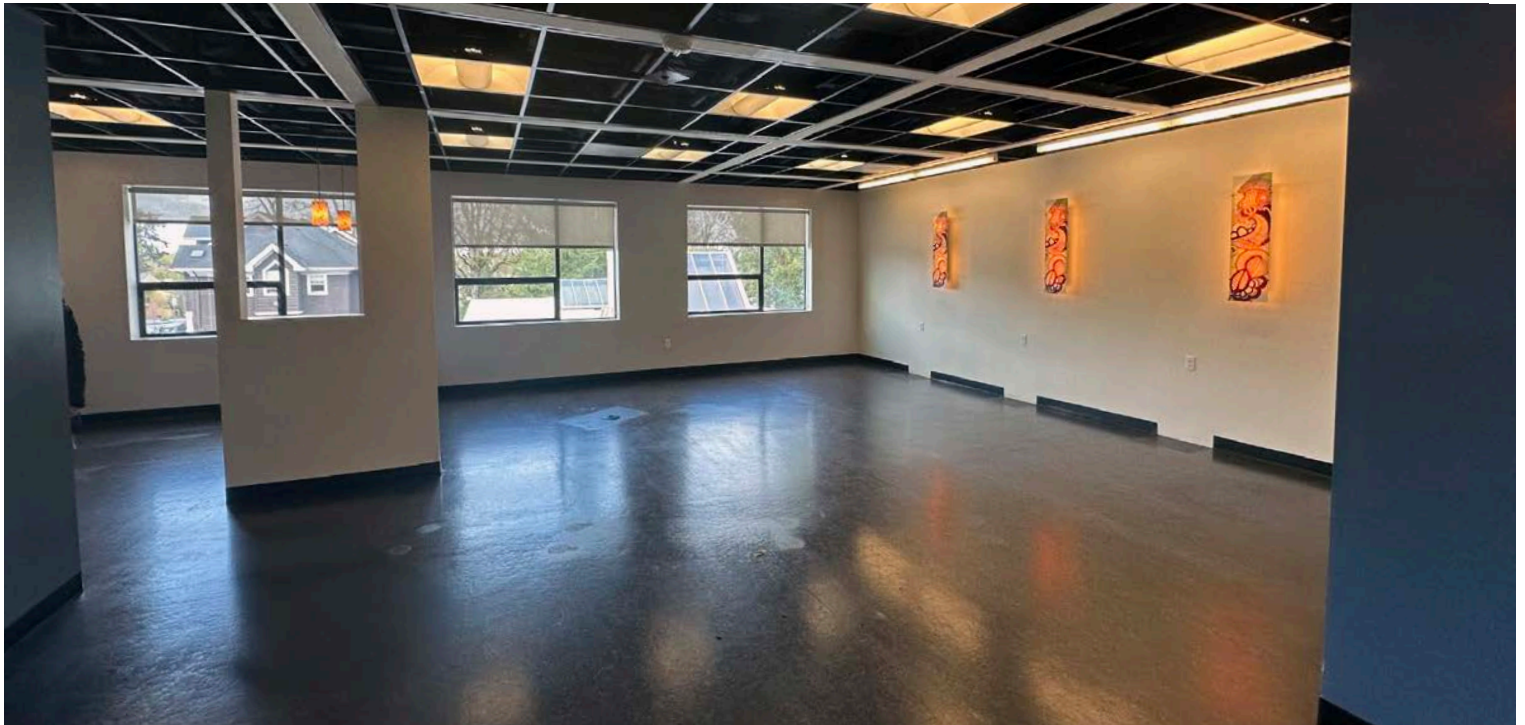
900 SW 5th Avenue • 17th Floor • Portland, OR 97204
503.223.3171 • norris-stevens.com

THE CORNELL BUILDING

12923 NW Cornell Road, Portland, OR 97229

FOR LEASE

PHOTOS - SUITE 202



For more information or a property tour, please contact:

MALLORIE GOODY
503.416.8422
MallorieG@norris-stevens.com

ELISSA VANARSDALL
503.225.8439
ElissaV@norris-stevens.com

Norris & Stevens

INVESTMENT REAL ESTATE SERVICES



Information contained herein has been obtained from others and considered to be reliable; however, a prospective purchaser or lessee is expected to verify all information to his/her own satisfaction.

900 SW 5th Avenue • 17th Floor • Portland, OR 97204
503.223.3171 • norris-stevens.com