

Prime Hill Rd Land

1484 Hill Rd.,
Flint, MI 48507

Mundy Township

ZONING

PRICE

GENERAL
COMMERCIAL

CONTACT

**MANSOUR
REALTY &
ADVISORS**

SERVING MID-MICHIGAN SINCE 1967

For Sale



JERRY MANSOUR | 810-244-6000 | www.mansourrealty.com

PROPERTY OVERVIEW








**MANSOUR
REALTY &
ADVISORS**

SERVING MID-MICHIGAN SINCE 1967

PROPERTY DESCRIPTION

Prime commercial land located in Genesee County new Central Business District - Hill Rd. in Mundy Township. This General Commercial-zoned site benefits from 26,000 vehicles per day and immediate proximity to US-23 and I-75. All utilities are available. Parcels can be purchased as individual outlots from 1 acre up to 7.6 acres giving end users/developers maximum flexibility.

PERMITTED USES

-  Office / Medical office
-  Retail / Restaurant
-  Hotel / Extended stay
-  Bank / Financial services
-  Fuel / Convenience / Auto services

PROPERTY DATA

Location	1484 Hill Rd., Flint, MI 48507
Size	1 to 7.6 Acres
Traffic Count	26,000 daily count
Zoning	General Commercial
Asking Price	Contact for pricing
Access	Hill Road and Van Slyke Rd
Utilities	County water and sewer

SITE OVERVIEW - W Hill Rd



**MANSOUR
REALTY &
ADVISORS**

SERVING MID-MICHIGAN SINCE 1967



LOCATION & AREA CONTEXT



**MANSOUR
REALTY &
ADVISORS**

SERVING MID-MICHIGAN SINCE 1967

NEARBY AMENITIES

- **Expressway Access** — Easy access to US-23, I-75, & I-69
- **Retail** — Already a major retail corridor, Hill Rd has recently added the only Costco within 30 minutes. Additional major retailers are considering new developments on Hill Rd.
- **Restaurants** — Numerous restaurants nearby including a full spectrum of cuisines and from fast food to fine dining
- **Hotels** — 8 hotels nearby
- **Hospital / Medical** — The 3 local hospital within 10 minutes.
- **Airport** — **Bishop International Airport (FNT)**: Approx. 4 mi northeast.

AREA DEMOGRAPHICS



**MANSOUR
REALTY &
ADVISORS**

SERVING MID-MICHIGAN SINCE 1967

	2 miles	3 miles	5 miles
2020 Population	15,410	37,564	92,167
2025 Population	14,569	35,928	92,203
2030 Population Projection	14,329	35,436	91,907
Annual Growth 2020-2025	-1.1%	-0.9%	0%
Annual Growth 2025-2030	-0.3%	-0.3%	-0.1%
Median Age	41.3	39.5	39
Bachelor's Degree or Higher	18%	20%	19%
2020 Households	6,749	16,399	38,730
2025 Households	6,361	15,627	38,651

FOR MORE INFORMATION CONTACT:

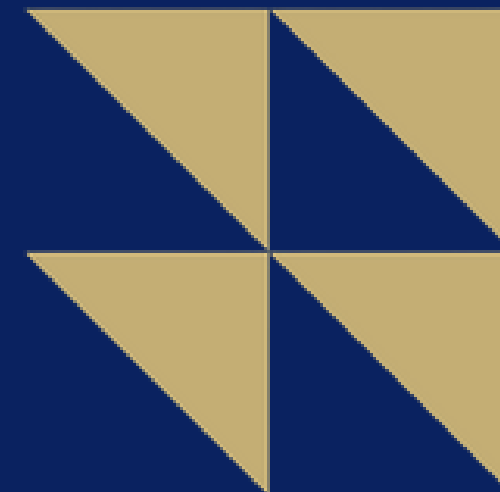
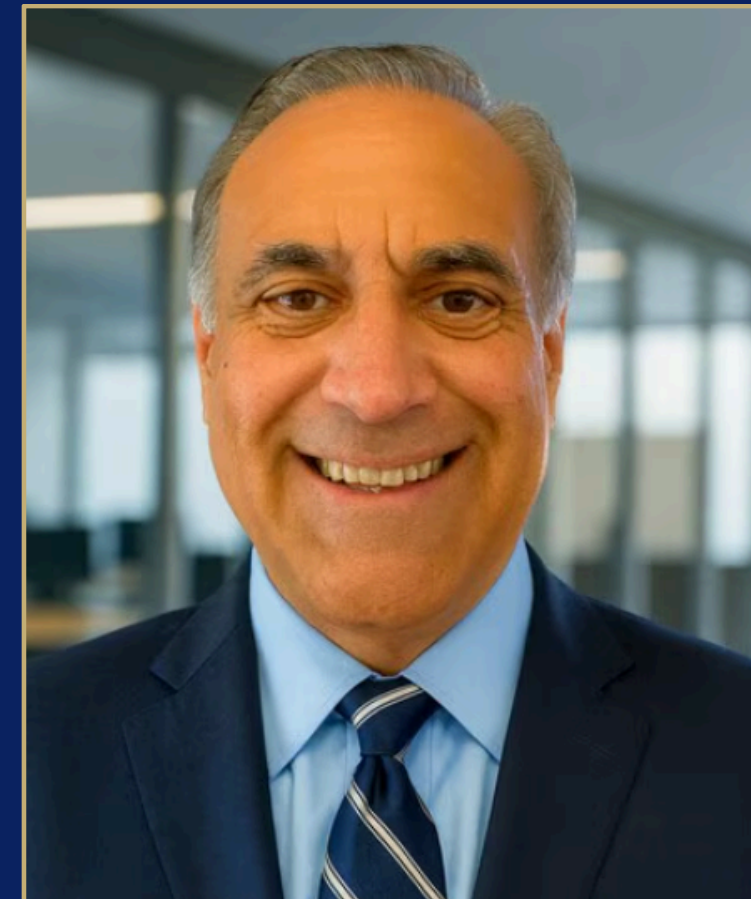
JERRY MANSOUR

[Mansour Realty & Advisors](#)

 810-244-6000

 jerrymansourjr@gmail.com

 www.mansourrealty.com



**MANSOUR
REALTY &
ADVISORS**

SERVING MID-MICHIGAN SINCE 1967