

Industrial Office **FOR LEASE** Available Now

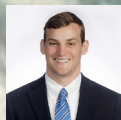
1737

Industrial Dr
Ashburn, GA 31714

1,500 SF
1.5-2.0 Acres



Scott Polinski
404.784.2633 mobile
spolinski@cresa.com



Rhett Delk
678.438.0537 mobile
rdelk@cresa.com

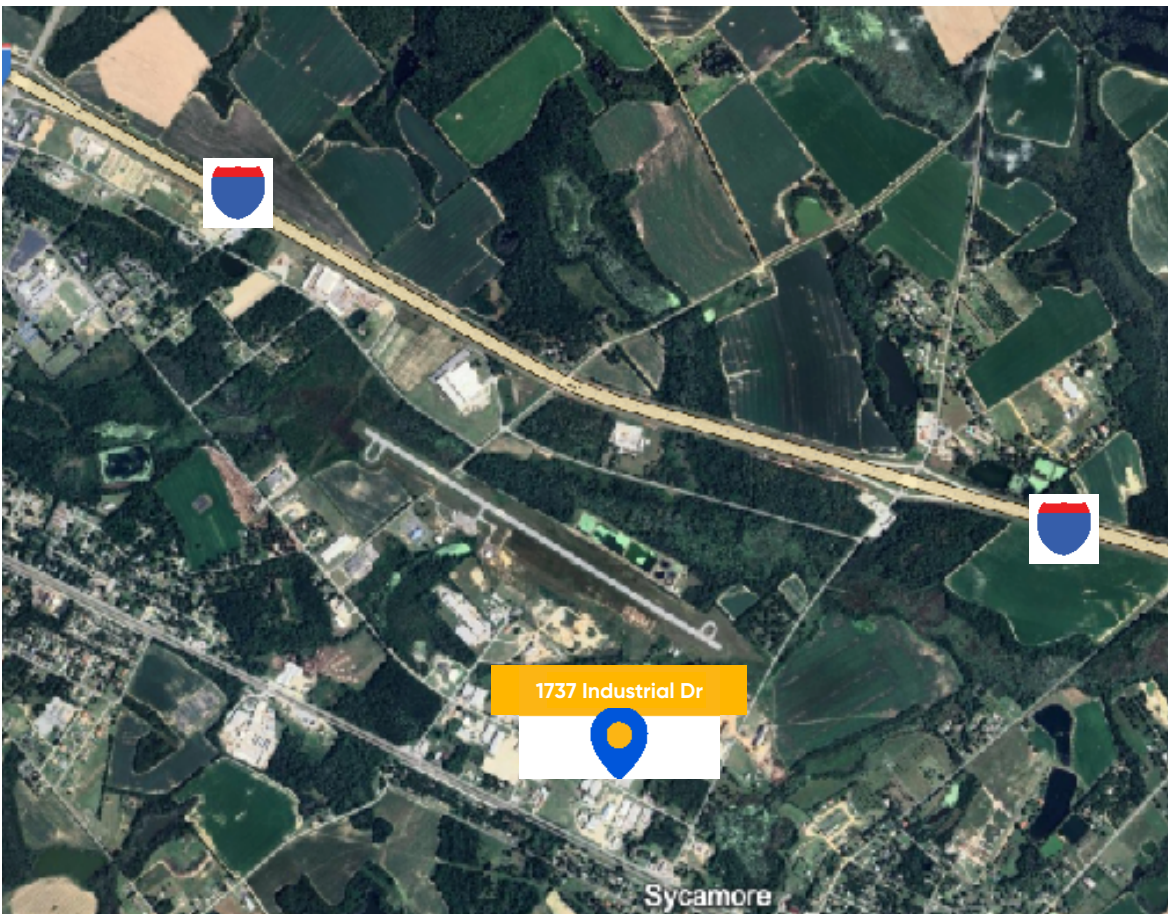
cresa ::::



Property Highlights

- 1,500 SF Office
- 1.5-2.0 Acres of Parking
- Class C
- Fenced Lot
- Zoning: C3

Cresa is pleased to offer for lease
1737 Industrial Dr,
a stand-alone facility spanning over
1,500 square feet and located in
South Georgia.



Located just minutes from I-75, this 1,500 SF office suite at 1737 Industrial Dr offers excellent accessibility for businesses seeking a strategic South Georgia address. Positioned within Sycamore's established industrial corridor, the property provides a balance of convenience and visibility. Its location allows for easy connectivity to Tifton, Cordele, and the broader Southwest Georgia region; ideal for regional service providers, administrative operations, or growing companies looking for professional office space in a cost-effective market.

cresa

1737



1.2 Miles
From I-75



20 Minutes
From Tifton

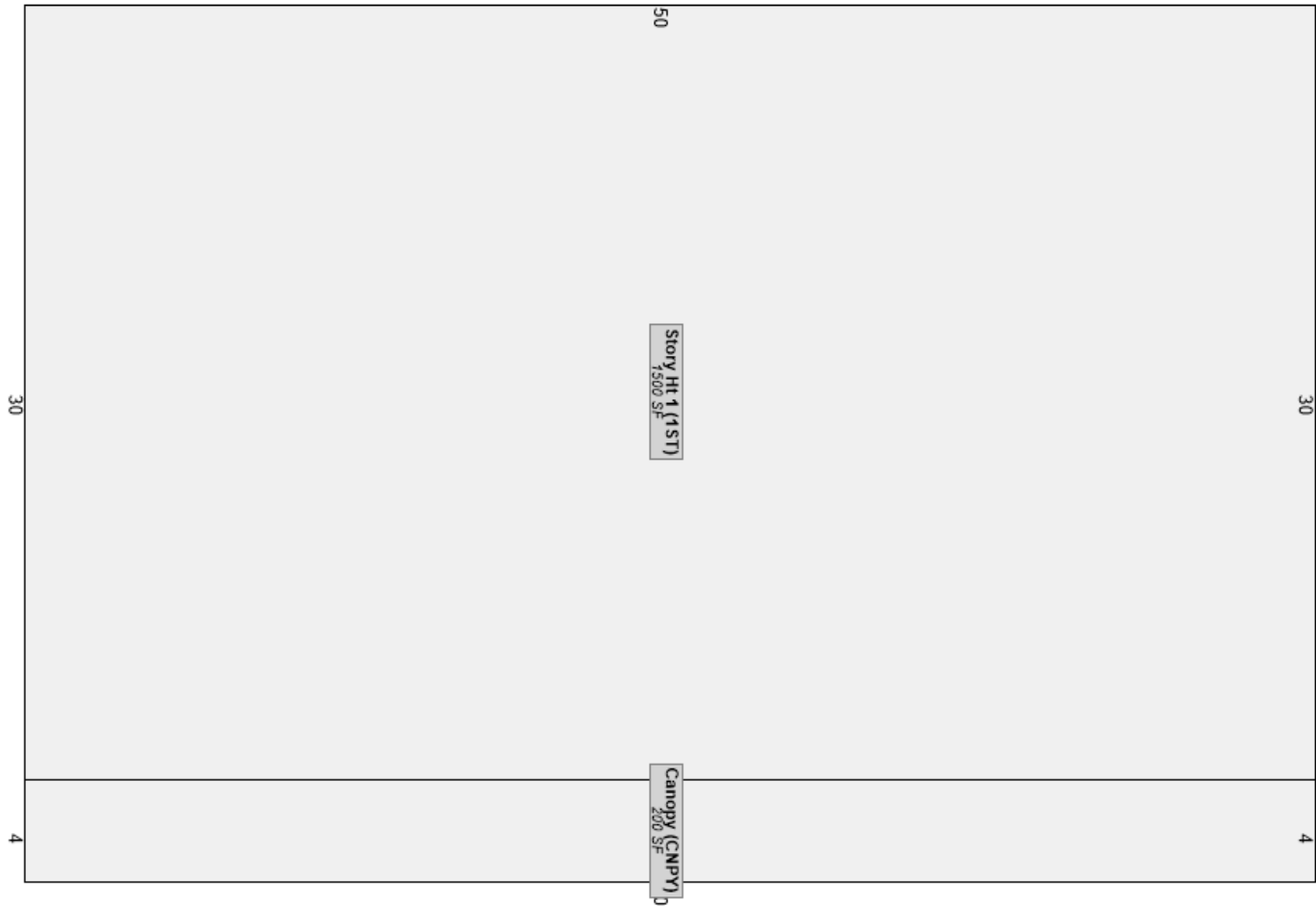


1.5 Hours
From Macon



45 Minutes
From Albany

Floor Plan



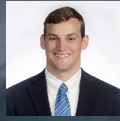
1737 Industrial Dr



For More Information



Scott Polinski
404.784.2633 mobile
spolinski@cresa.com



Rhett Delk
678.438.0537 mobile
rdelk@cresa.com

1737

Industrial Dr
Ashburn, GA 31714

1,500 SF
1.5-2.0 Acres

Cresa © 2019. All rights reserved. The information contained in this document has been obtained from sources believed reliable. While Cresa does not doubt its accuracy, Cresa has not verified it and makes no guarantee, warranty, or representation about it. It is your responsibility to independently confirm its accuracy and completeness. Any projections, opinions, assumptions or estimates used are for example only and do not represent the current or future performance of the property. The value of this transaction to you depends on tax and other factors which should be evaluated by your tax, financial and legal advisors. You and your advisors should conduct a careful, independent investigation of the property to determine to your satisfaction the suitability of the property for your needs.

cresa ::::