

107 North 1st Street

WILLIAMSBURG
BROOKLYN, NY

NEWMARK

CONCEPTUAL RENDERING



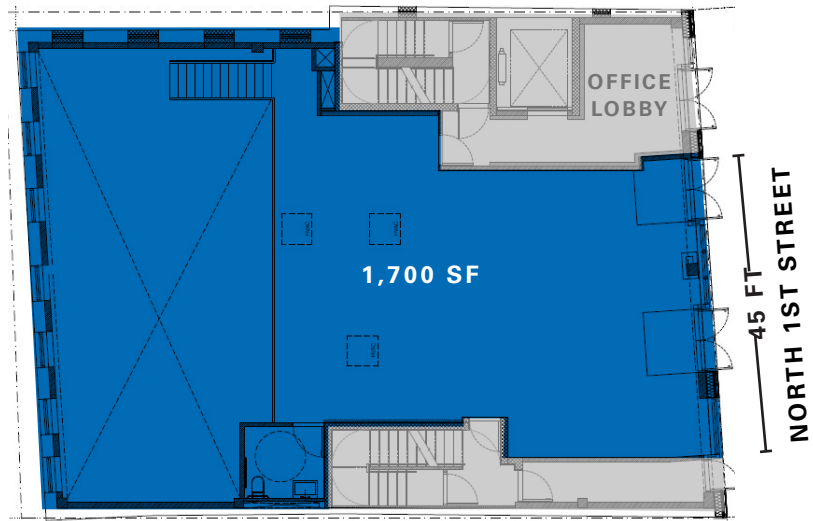
Property Details

Location	Possession	Comments
North block between Berry Street and Wythe Avenue	Immediate	Steps from the new and exciting Refinery at Domino campus and the future River Ring Development by Two Trees. Once complete both developments will collectively include over 4,000 residential units, 700,000 SF of office space, best in class retail space, 10 acres of world-class open space, and the Domino Park on the waterfront, which hosts nearly 1 million visitors per year
Approximate Size	Site Status	
Ground Floor	New construction	
Lower Level		
Rooftop		
Total		
Term	Neighbors	
Long term	Gelateria Williamsburg, Nitehawk Cinema, PLANTA, Rivian, Black Seed Bagels, Aurora Brooklyn, 12 Chairs, Roberta's, Other Half Brewing, Two Hands, Trader Joe's, Supreme Williamsburg, Freehold, Misi, Devocion, Jack's Wife Freda and Radegast Hall & Biergarten	Equipped with black-iron venting for a restaurant
Frontage		Unique rooftop opportunity with amazing views of Williamsburg; Rooftop can be leased separately
45 FT on North 1st Street		Seven minute walk to Bedford Avenue subway station servicing the L line to Manhattan and East Brooklyn
		20 FT ceiling in the rear of the Lower Level space

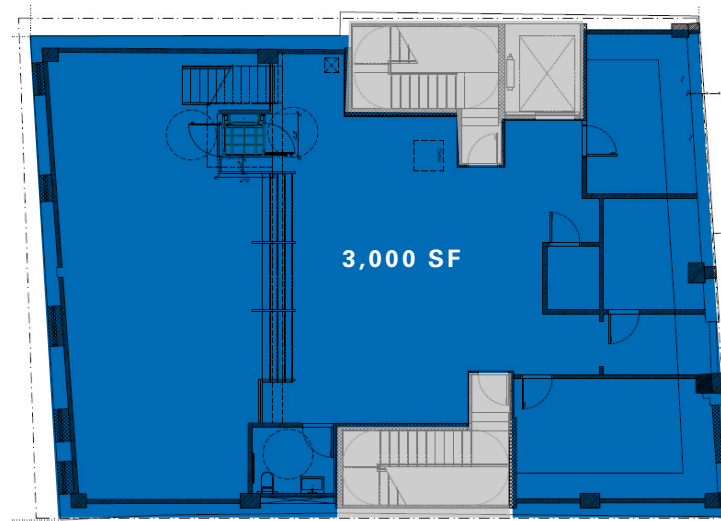


Floor Plans

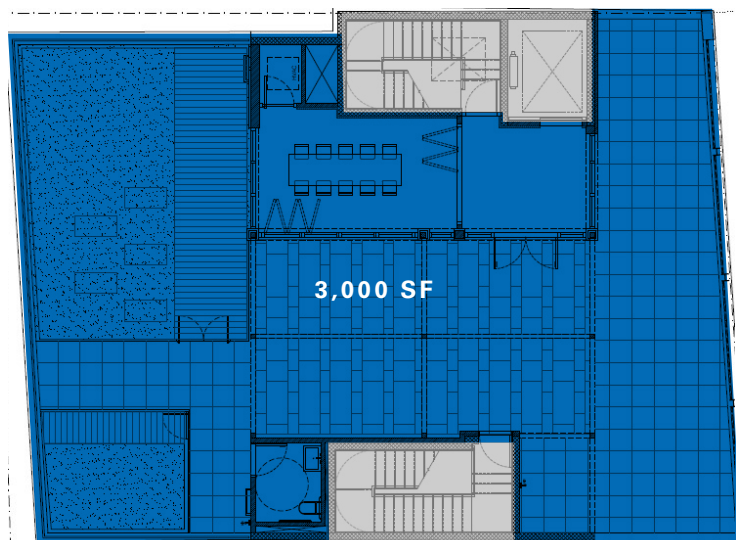
Ground Floor



Lower Level



Rooftop



Domino Park



107 NORTH 1ST STREET



CONTACT

Jeremy Ezra
t 212-351-9351
jeremy.ezra@nmrk.com

Mai Shachi
t 212-916-2927
mai.shachi@nmrk.com

nmrk.com

+ COMING SOON