

# 210

SE 34<sup>TH</sup>  
STREET

OFFICE BUILDING FOR LEASE



BENTONVILLE, AR

**CBRE**





## EXECUTIVE SUMMARY

Expand your business in Bentonville with our unique lease opportunity at 210 SE 34th Street. Enjoy a recently renovated 14,388 sq ft space, complete with 25 offices, 7 conference rooms, and a fully equipped test kitchen.

210 SE 34th Street is not just an office space, it's an environment designed to inspire creativity and productivity. The premises offer a unique blend of professional and leisure spaces with the inclusion of a fully functional test kitchen. This distinctive feature sets the property apart, providing a space for team building, culinary creativity, or even hosting events.



CONVENIENT  
LOCATION



TEST KITCHEN



LARGE SEATING  
CAPACITY

210 SE 34<sup>TH</sup> ST

## PROPERTY HIGHLIGHTS

- Availability: ±4,042 - 14,388 SF
- Rate: \$21/SF (NNN)
- 25 Offices
- 7 Conference Rooms
- 8 Built-in Workstations
- 2 Break Rooms
- Test Kitchen
  - Built-in Refrigerator & Freezer
  - Gas Stove with Vent Hood and Fire Suppression
  - Double Wall Ovens
  - Dishwasher
- Ability to Divide or Provide Single Tenant Occupancy

Modern finishes create a clean and bright aesthetic in the office space, while the functional layout promotes collaboration. The overall atmosphere is both inviting and professional.





## LOCATION ANALYSIS

The property's location is one of its strongest selling points, situated in rapidly expanding Bentonville. The building is in close proximity to the current Walmart Home office, the new Walmart Home Office site, and Sam's Club Headquarters, making it an appealing option for any supplier office.

5

Minutes to Walmart  
Future Home Campus  
(Under Construction)

4

Minutes to I-49

8

Minutes to Downtown  
Bentonville



210 SE 34<sup>TH</sup> ST

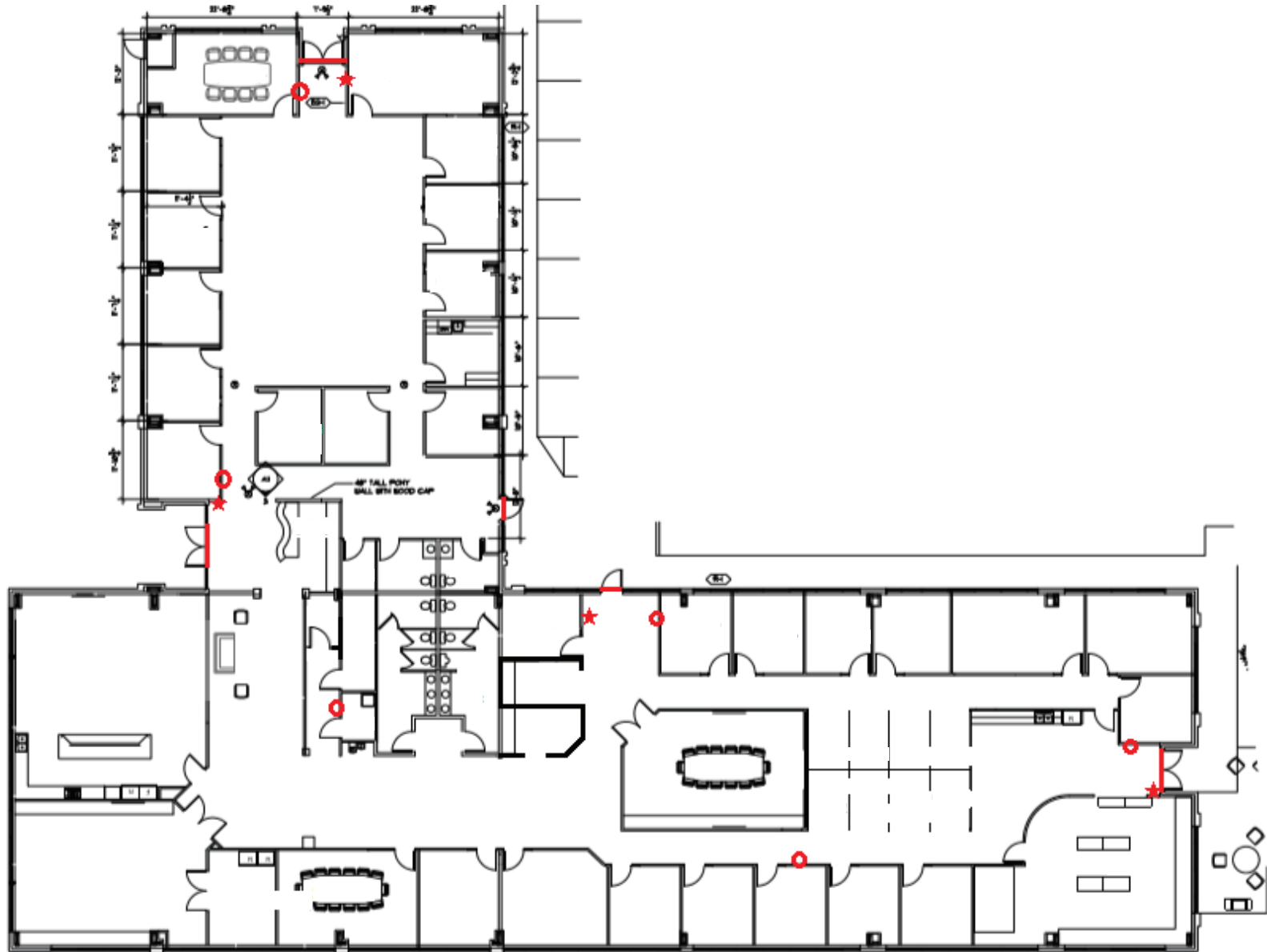




210 SE 34<sup>TH</sup> ST



FLOOR PLAN



210 SE 34<sup>TH</sup> ST



BENTONVILLE MARKET MAP



210 SE 34<sup>TH</sup> ST



# 210

SE 34<sup>TH</sup>  
STREET

BENTONVILLE, AR

## CONTACT US

### **Hunter Groce**

Senior Associate  
+1 479 287 4241  
hunter.groce@cbre.com

### **Alex Reed**

Associate  
+1 479 249 9560  
alex.reed1@cbre.com

### **David Erstine, SIOR, CCIM**

Senior Vice President  
+1 479 301 2520  
david.erstine@cbre.com

© 2024 CBRE, Inc. All rights reserved. This information has been obtained from sources believed reliable, but has not been verified for accuracy or completeness. You should conduct a careful, independent investigation of the property and verify all information. Any reliance on this information is solely at your own risk. CBRE and the CBRE logo are service marks of CBRE, Inc. All other marks displayed on this document are the property of their respective owners, and the use of such logos does not imply any affiliation with or endorsement of CBRE. Photos herein are the property of their respective owners. Use of these images without the express written consent of the owner is prohibited.



**CBRE**