

**THE
WAREHOUSE**
AT
CAMDEN YARDS
EST. 1899

323-351 WEST CAMDEN STREET BALTIMORE, MD 21201

ICONIC OFFICE SPACE



The History

The Warehouse at Camden Yards, transformed into an iconic office space in 1992, stands as one of Baltimore's most recognizable landmarks. Originally constructed between 1899 and 1905 to serve the Baltimore & Ohio Railroad, the Warehouse stretches an impressive 1,116 feet in length, making it the longest brick building east of the Mississippi River. This historic structure runs parallel to Orioles Park, offering tenants a glimpse into Baltimore's rich history along with the vibrant downtown atmosphere. Ideally situated within the Camden Yards Sports Complex, the Warehouse at Camden Yards has also become one of the most notable landmarks in Major League Baseball.



Building Highlights



Adaptive Reuse
Office Space with
Exposed Brick



Access to Mass
Transit and Major
Highways



Private Parking



Close Proximity
to Dozens of
Restaurants



24/7 Security
13 Security Posts
300 Cameras
Safe Walk Escort



Certified LEED
by The U.S Green
Building Council



\$30 Million

in renovations including:

.....
Newly Renovated Lobbies
.....

.....
Upgraded HVAC
.....

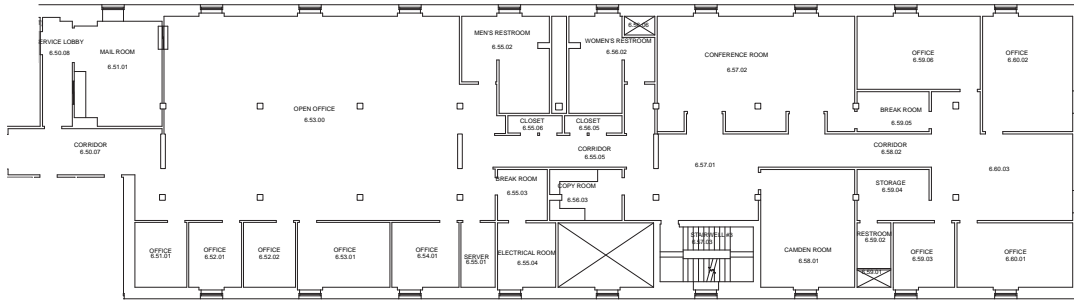
.....
Exterior Awnings/Canopy
.....

.....
Renovated Elevators
.....

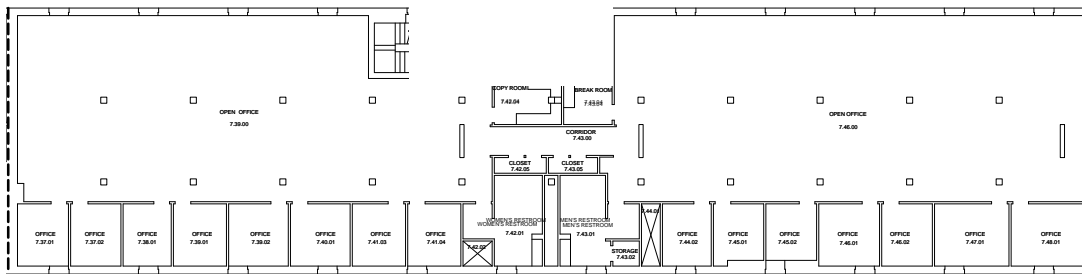
.....
New Cabs
.....

.....
Elevator Control System
.....

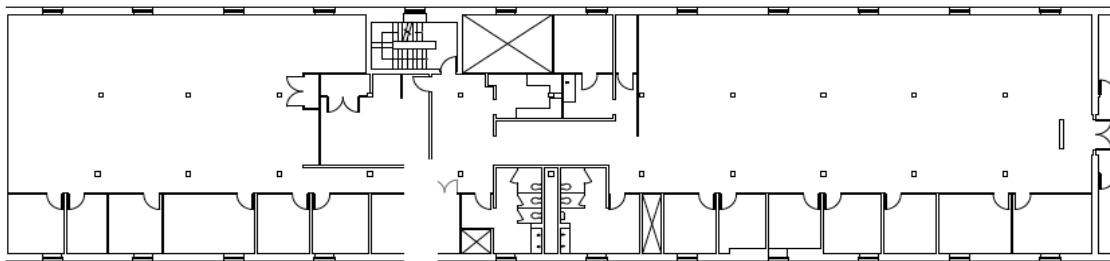
Floor Plans



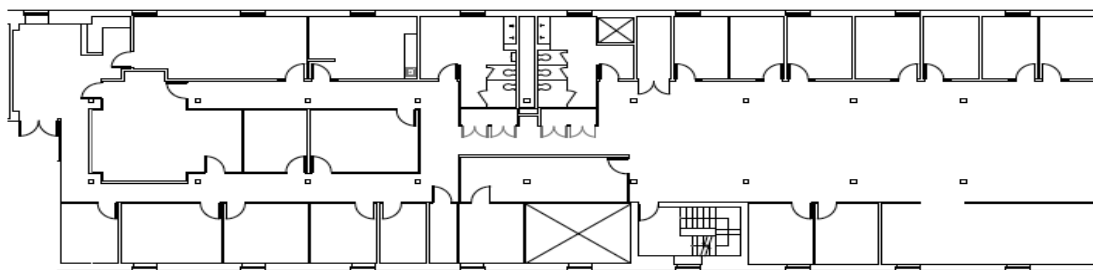
6th Floor **Suite F** - 8,632 SF



7th Floor **Suite E** - 10,460 SF

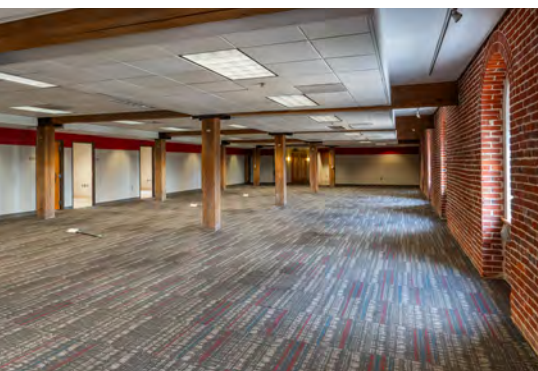


8th Floor **Suite E** - 10,780 SF



8th Floor **Suite F** - 7,592 SF

Contiguous
Full Floor
18,372 SF



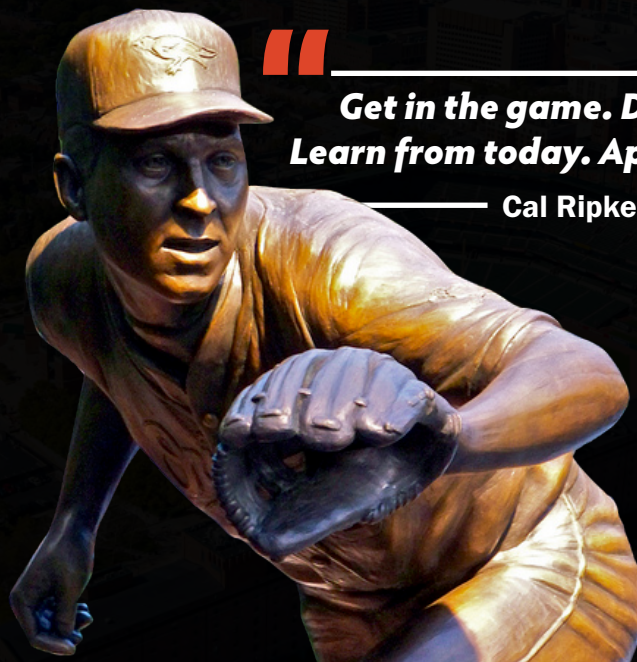


Katie Datin

Senior Vice President
 +1 202 534 3614
 katie.datin@colliers.com

Nate Crowe

Senior Vice President
 +1 202 534 3623
 nate.crowe@colliers.com



**Get in the game. Do the best you can.
 Learn from today. Apply it to tomorrow.**

— Cal Ripken Jr. **Baltimore Legend**

