

Hwy 75 Service Center

12281 & 12291 N. Casper St., Jenks, OK 74037

www.walmancommercial.com

918-481-8888



- **2,800 SF—previous veterinary office with substantial buildout. Easy backfill for vet*dental*medical*office user.**
- **1,295 SF North End Cap.**
- **Conveniently located off of the Creek Turnpike and Hwy 117 (121st street) intersection, with excellent access to both.**
- **Located across from Walmart Supercenter restaurants and retail providing a regional draw and traffic.**
- **Affordable rates within vibrant and growing retail intersection with minimal small shop space available.**
- **Crystal Pools next door with established customer traffic.**



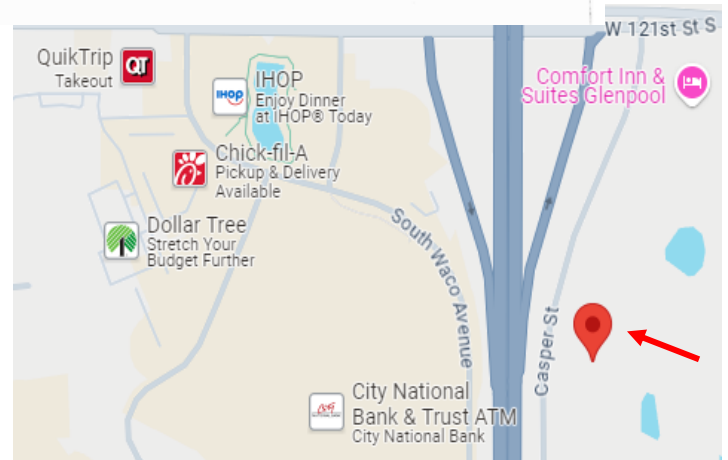
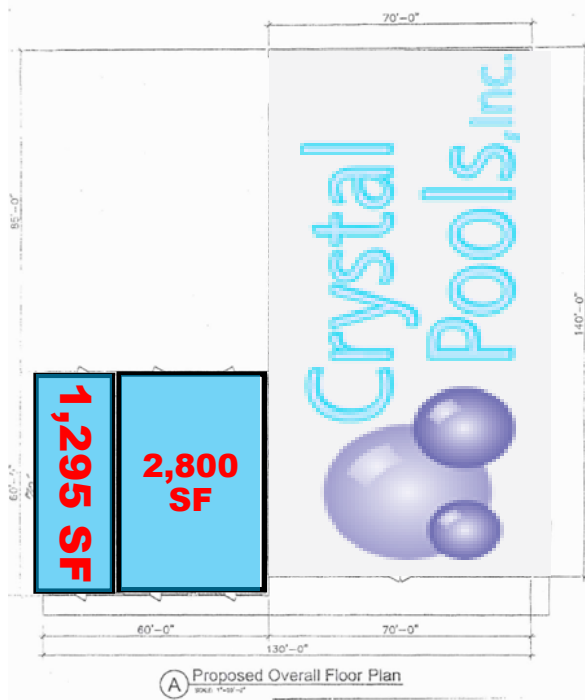
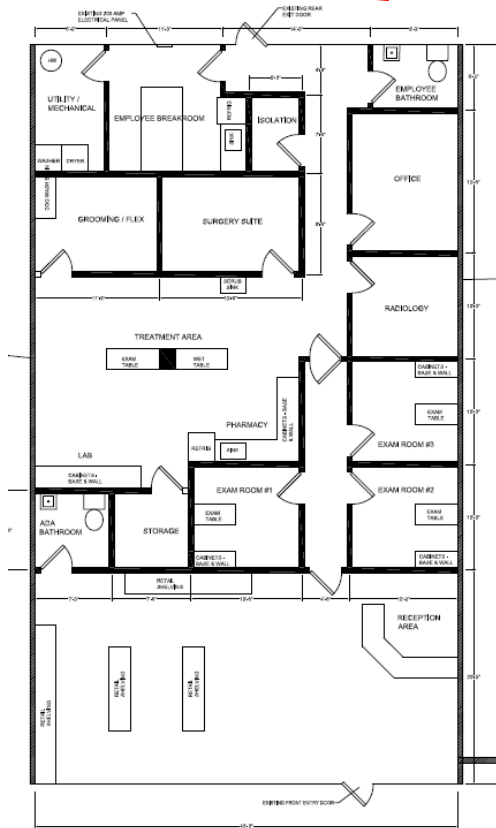
7060 S. Yale
Suite 900
Tulsa, OK 74136
Tel: 918.481.8888
Fax: 918.481.8866

DEMOGRAPHICS

MILE RADIUS	1	3	5
Population:	3,707	25,107	76,740
Households:	1,196	8,932	28,909
Avg. H.H. Income:	\$114,797	\$107,403	\$95,873
Traffic Count:	HWY 75 - 48,418 VPD		

Hwy 75 Service Center

12281 & 12291 N. Casper St., Jenks, OK 74037



7060 S. Yale
Suite 900
Tulsa, OK 74136
Tel: 918.481.8888
Fax: 918.481.8866

All statements herein are for informational purposes only and are believed to be reliable; however, no warranty or representation is made to the accuracy thereof and the same is submitted subject to errors, omissions, change of price, terms, conditions and prior sale or lease.