



LOUISE AVENUE OFFICE LAND

HIGH-PROFILE OFFICE PARCEL

7921 Cinnamon Ridge Place | Sioux Falls, SD 57108



SIZE

24,057 sqft
0.55 acre



SITE DELIVERY

Pad site delivered with site engineering, utilities and private road complete, platting fees paid.



CO-TENANCY

La Petite Academy, Anderson-Smith Speech Therapy, Home Definition, Midwest Periodontics, Culver's, Explorer Elementary School, Avera Health Campus, Sanford Clinic, and Lewis Drug



PRICE

\$433,026



TRAFFIC

Approx. 15,000 cars per day



LOCATION

High-profile office parcel in Southwest Sioux Falls near 85th Street and Louise Avenue, with great exposure and Louise avenue frontage.

Information deemed reliable but not guaranteed.



VBCLINK.COM | 605.361.8211

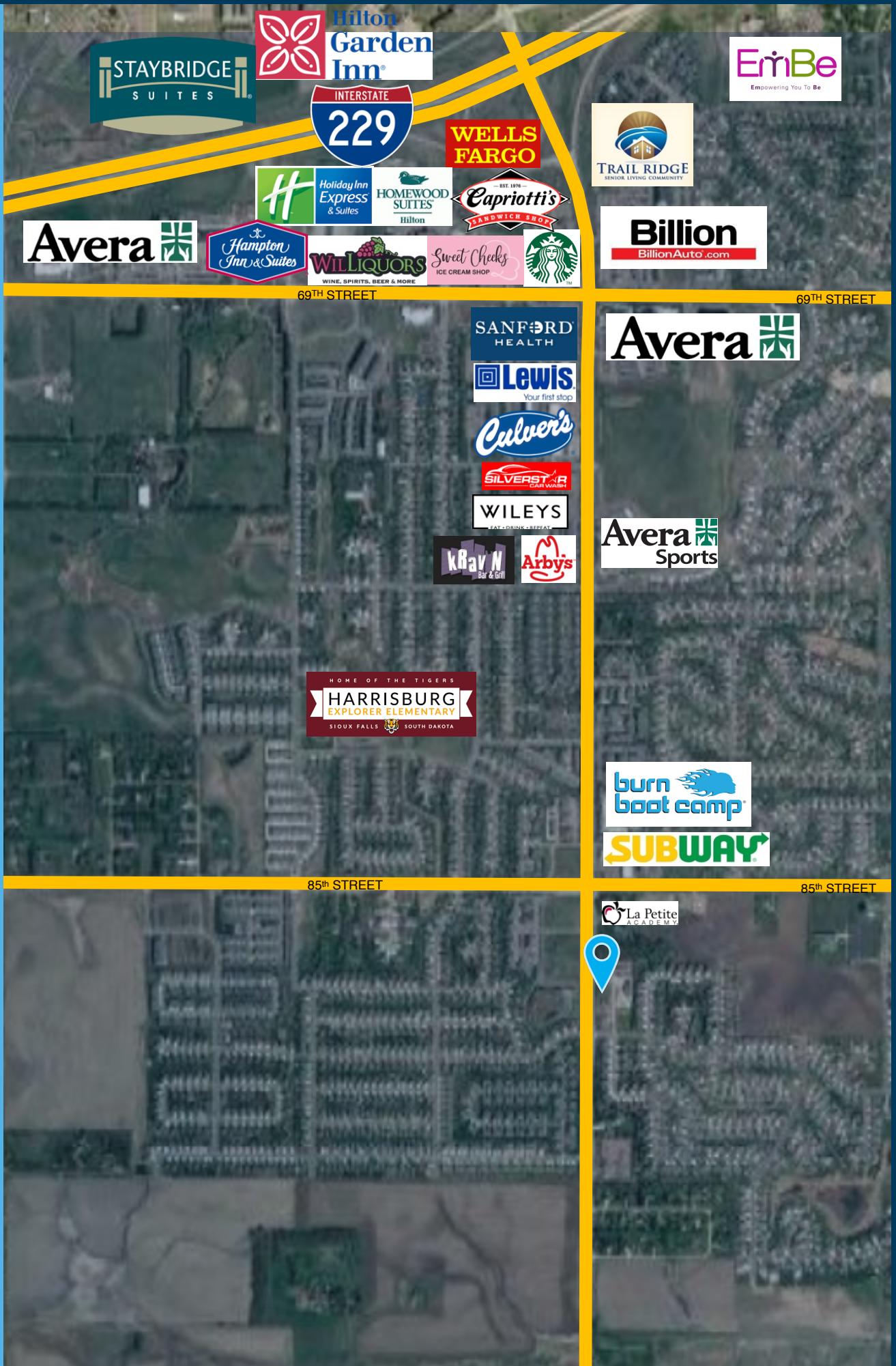
2571 South Westlake Drive #100 | Sioux Falls, South Dakota 57106



605.376.0127

Ryan@VBCLink.com

AREA RETAIL MAP

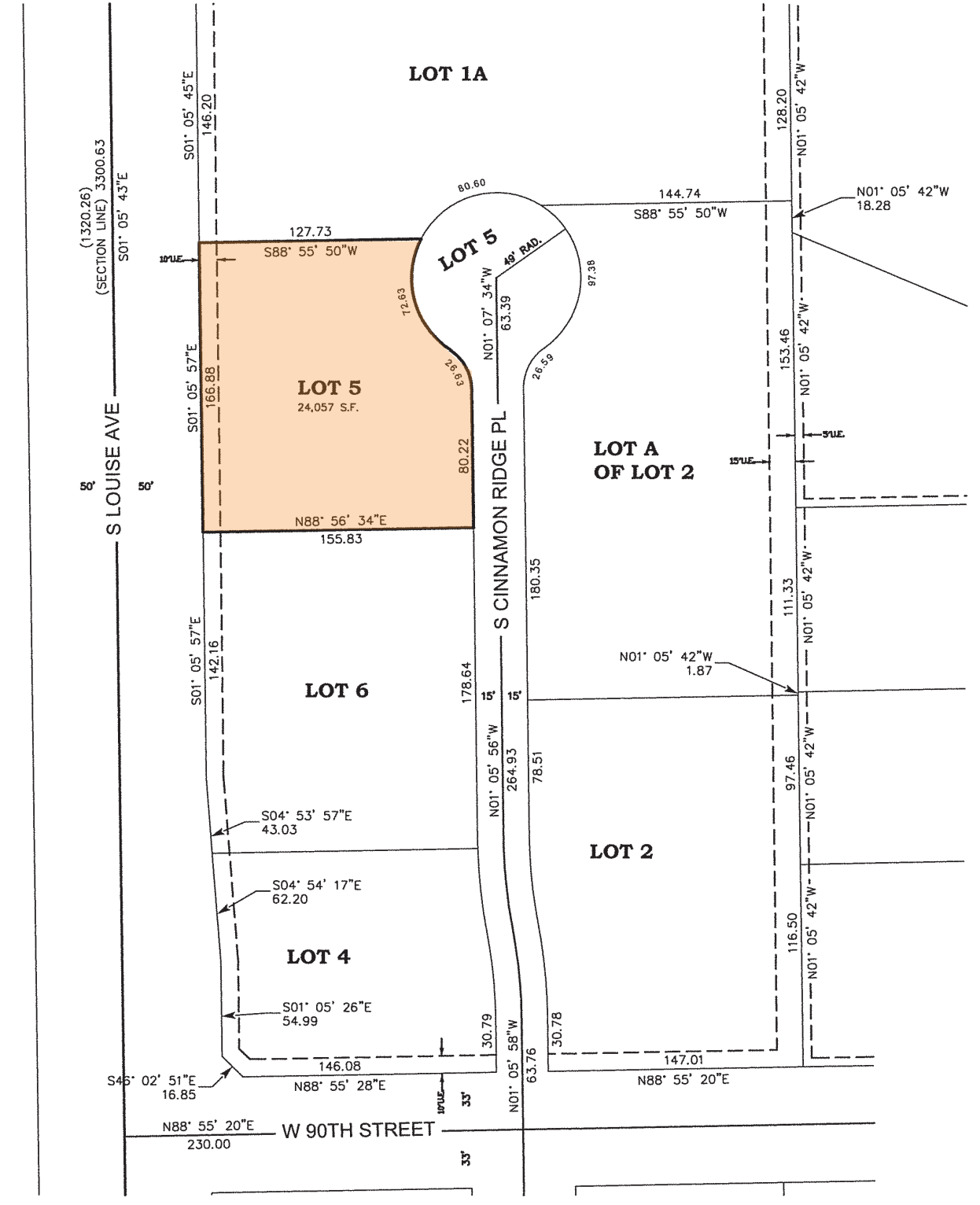


PARCEL MAP



PLAT OF LOT 5 CINNAMON RIDGE OFFICE PARK

AN ADDITION TO THE CITY OF SIOUX FALLS
LINCOLN COUNTY, SOUTH DAKOTA



PLAT