

# 296 Poplar Neck Rd

Birdsboro, Pennsylvania 19508

## Property Highlights

- Industrial Land and Building Available For Lease
- Warehouse Building is 14,500 SF +/- with heavy power and Drive-In Doors. Six months for delivery required.
- Outside Storage Area and Truck Parking
- Up to 10 Acres Immediately Available
- Smaller lots available
- Secure fencing possible
- Great Access to Berks County and surrounding counties. Located at PA I-176 and PA Rt 724
- Rail Served
- Zoned Heavy Industrial in Cumru Township, Berks County

## Offering Summary

<b>Lease Rate:</b>	Negotiable
<b>Building Size:</b>	14,500 +/- SF
<b>Available Ac:</b>	Up to 15 Acres
<b>Lot Size:</b>	200 Acres

## Demographics 1 Mile 5 Miles 10 Miles

<b>Total Households</b>	1,166	73,548	119,637
<b>Total Population</b>	3,496	182,728	300,642

## For More Information

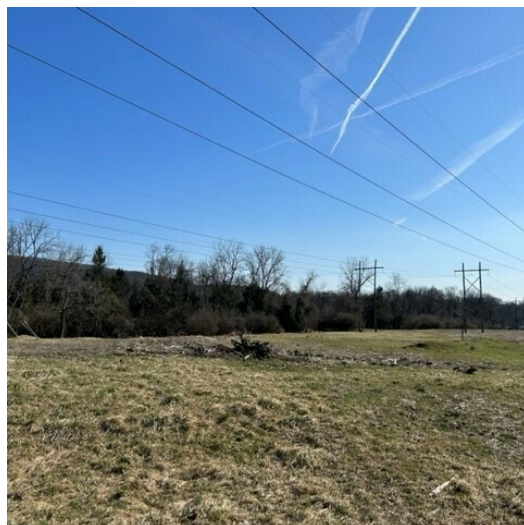
**Brian McCahon**

O: 610 370 8510 | C: 610 207 0955  
bmccahon@naikeystone.com

**John Buccinno, SIOR CCIM**

O: 610 370 8508  
jbuccinno@naikeystone.com

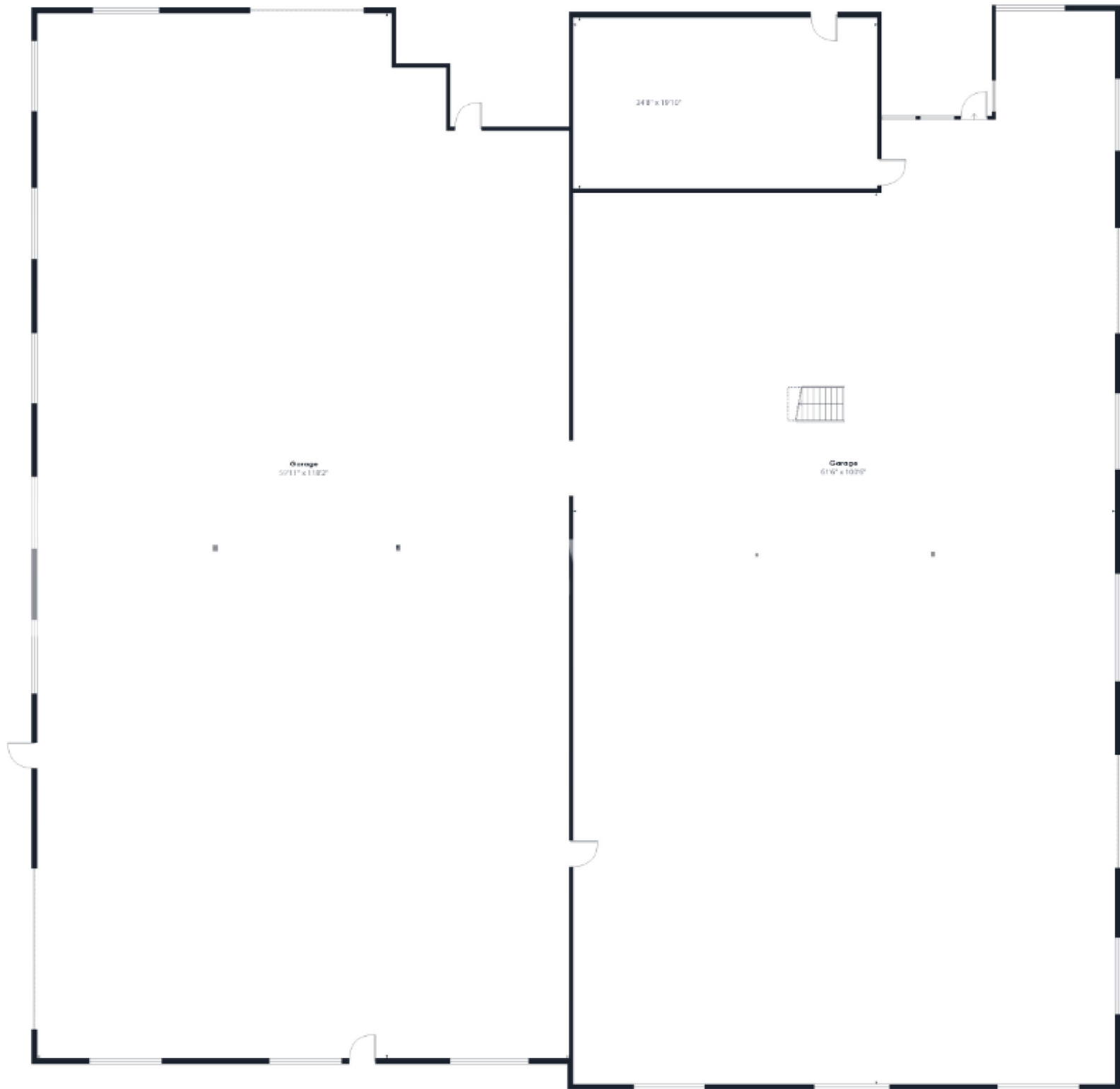




We obtained the information above from sources we believe to be reliable. However, we have not verified its accuracy and make no guarantee, warranty or representation about it. It is submitted subject to the possibility of errors, omissions, change of price, rental or other conditions, prior sale, lease or financing, or withdrawal without notice. We include projections, opinions, assumptions or estimates for example only, and they may not represent current or future performance of the property. You and your tax and legal advisors should conduct your own investigation of the property and transaction.

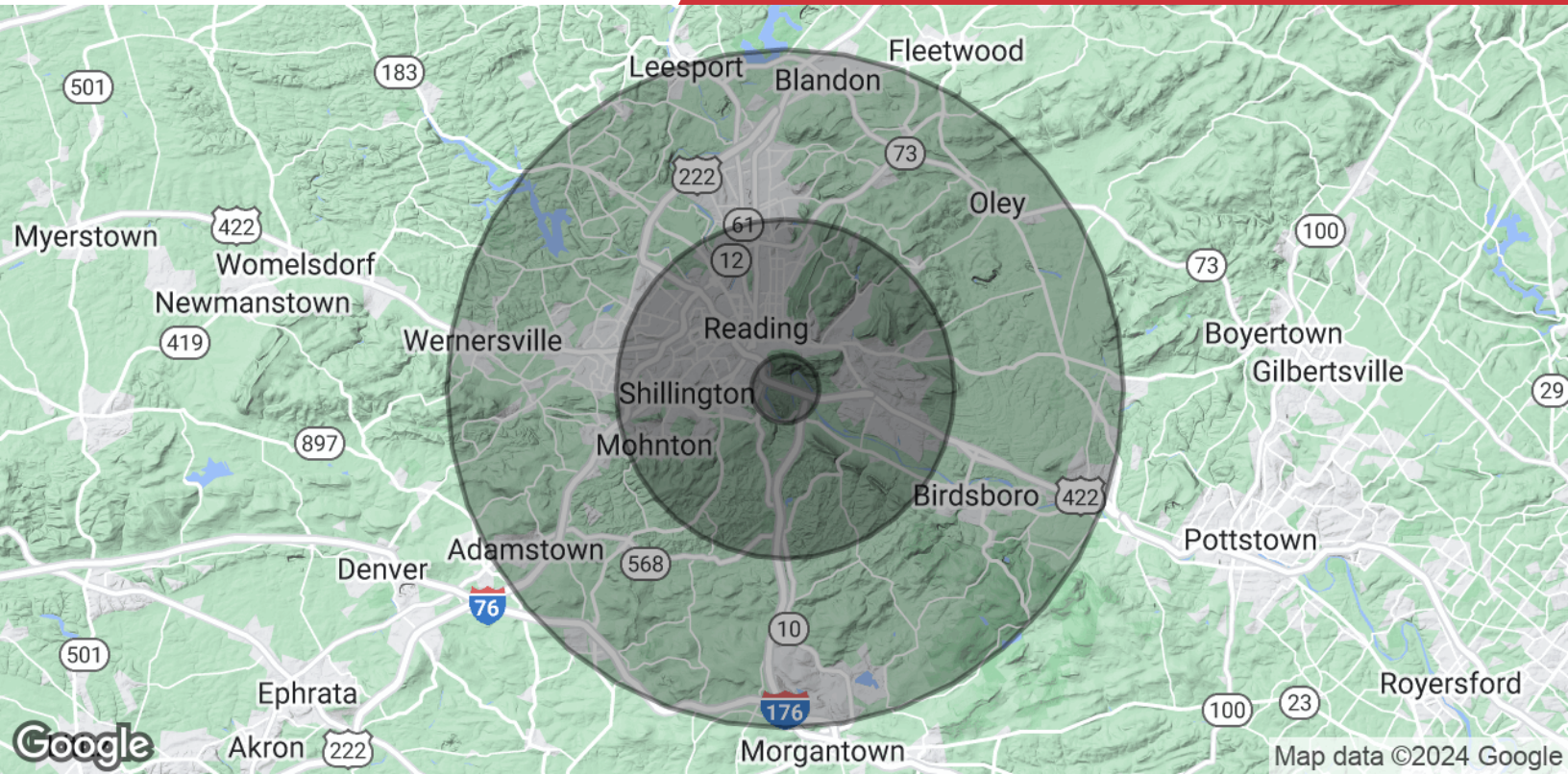
875 Berkshire Boulevard Suite 102  
Wyomissing, PA 19610  
610 779 1400 tel  
[naikeystone.com](http://naikeystone.com)











Population	1 Mile	5 Miles	10 Miles
<b>Total Population</b>	3,496	182,728	300,642
<b>Average Age</b>	33.8	37.0	39.6
<b>Average Age (Male)</b>	32.9	35.7	38.4
<b>Average Age (Female)</b>	34.4	38.9	41.1
Households & Income	1 Mile	5 Miles	10 Miles
<b>Total Households</b>	1,166	73,548	119,637
<b># of Persons per HH</b>	3.0	2.5	2.5
<b>Average HH Income</b>	\$71,886	\$68,184	\$78,855
<b>Average House Value</b>	\$143,922	\$143,142	\$175,915

2020 American Community Survey (ACS)