



Land For Sale

309 N Main St, Grapevine, TX 76051



Mark Wykes

Coldwell Banker Commercial Real Estate
850 E State Hwy 114, Suite 100, Southlake, TX 76092
mark.wykes@cbrealty.com
(972) 896-0054

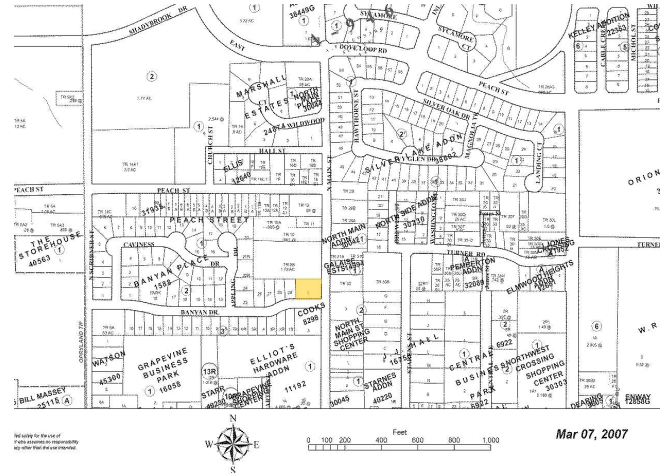


309 N Main St

\$850,000

Nestled in the heart of the vibrant city of Grapevine, this exceptional lot offers the perfect blend of location and convenience. Located downtown, one block from charming Historic Main Street, you'll have easy access to Grapevine's renowned shopping, dining, local wineries and entertainment options, as well as top-rated schools, parks and Grapevine Lake. Grapevine is a commuter's paradise, strategically located in the center of the Dallas-Fort Worth metroplex. With major highway access and home to DFW International Airport, this location offers unparalleled convenience. Additionally, Downtown Grapevine is a hub for the TexRail commuter train, connecting directly to DFW Airport in seven minutes, and providing commuters easy access from Fort Worth and cities in between. This accessibility makes it ideal for both business and residential development, offering immense potential for future growth.

- Blocks from Historic Downtown Main Street
- Currently Zoned Commercial Highway
- Opportunity to Subdivide into Two Residential Lots



Price: \$850,000

Property Type: Land

Property Subtype: Residential

Proposed Use: Commercial

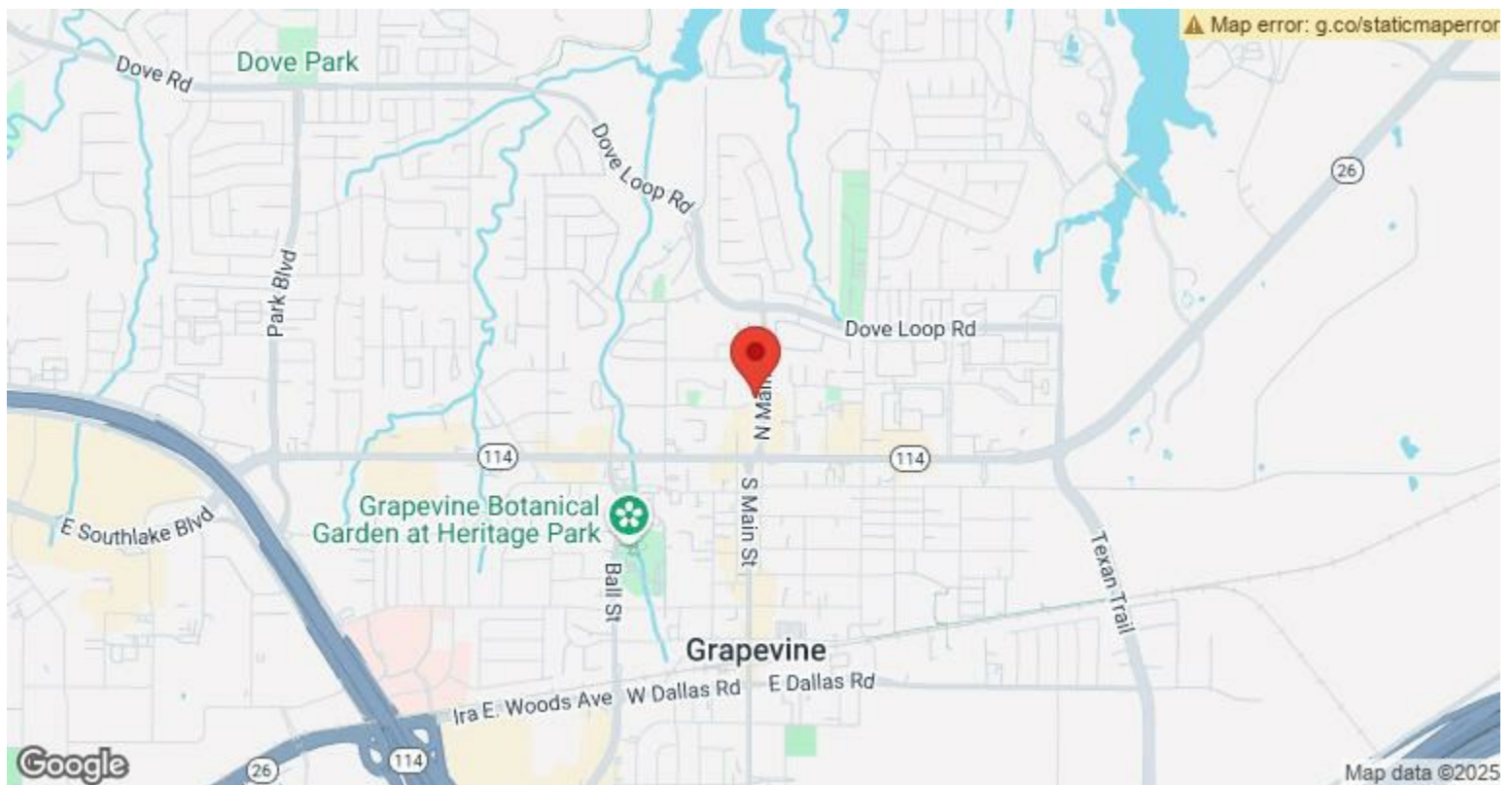
Sale Type: Owner User

Total Lot Size: 0.34 AC

No. Lots: 1

Zoning Description: Commercial

APN / Parcel ID: 00623466



309 N Main St, Grapevine, TX 76051

Nestled in the heart of the vibrant city of Grapevine, this exceptional lot offers the perfect blend of location and convenience. Located downtown, one block from charming Historic Main Street, you'll have easy access to Grapevine's renowned shopping, dining, local wineries and entertainment options, as well as top-rated schools, parks and Grapevine Lake. Grapevine is a commuter's paradise, strategically located in the center of the Dallas-Fort Worth metroplex. With major highway access and home to DFW International Airport, this location offers unparalleled convenience. Additionally, Downtown Grapevine is a hub for the TexRail commuter train, connecting directly to DFW Airport in seven minutes, and providing commuters easy access from Fort Worth and cities in between. This accessibility makes it ideal for both business and residential development, offering immense potential for future growth. This 14,923 sq. ft. lot is currently zoned Commercial, with potential for residential development after approval from Grapevine's Planning and Zoning. There is the possibility to subdivide the lot into two residential parcels, offering a rare opportunity to build one's dream home. Take advantage of the local wineries, scenic lake, and rich history that make Grapevine a unique and desirable destination. Don't let this rare opportunity pass you by—this property is waiting for you to make it your own! Buyer and Buyer Agent to verify all information required for development with the City of Grapevine.

Property Photos



309-n-main-street-grapevine-tx-76051-High-Res-4



309-n-main-street-grapevine-tx-76051-High-Res-7

Property Photos



Property Photos

