



## 18142 Navajo Rd

18142 Navajo Rd, Apple Valley, CA 92307



**Ramses Nava**

Meadow Highlands LLC

19745 E Colima Rd, Rowland Heights, CA 91748

[ramses@meadowhighland.com](mailto:ramses@meadowhighland.com)

(626) 392-9072



# 18142 Navajo Rd

## Flexible Lease Terms

Versatile and secure industrial storage yard offering extensive outdoor storage space, well-suited for a wide range of industrial uses. Ideal for contractors, construction companies, logistics and distribution operators, and utility or service fleets. The yard can accommodate heavy equipment, trucks, trailers, containers, and industrial materials such as steel, pipe, and lumber. With a small onsite office, gated and fenced access, and truck-friendly circulation, this property provides an excellent solution for fleet parking, material staging, laydown yard operations, or general maintenance yard use....

- Industrial Outdoor Storage
- Office Available
- Live/Work



Rental Rate:	Upon Request
--------------	--------------

Property Type:	Industrial
----------------	------------

Total Office/House Area:	1,000 SF
--------------------------	----------

Year Built:	1959
-------------	------

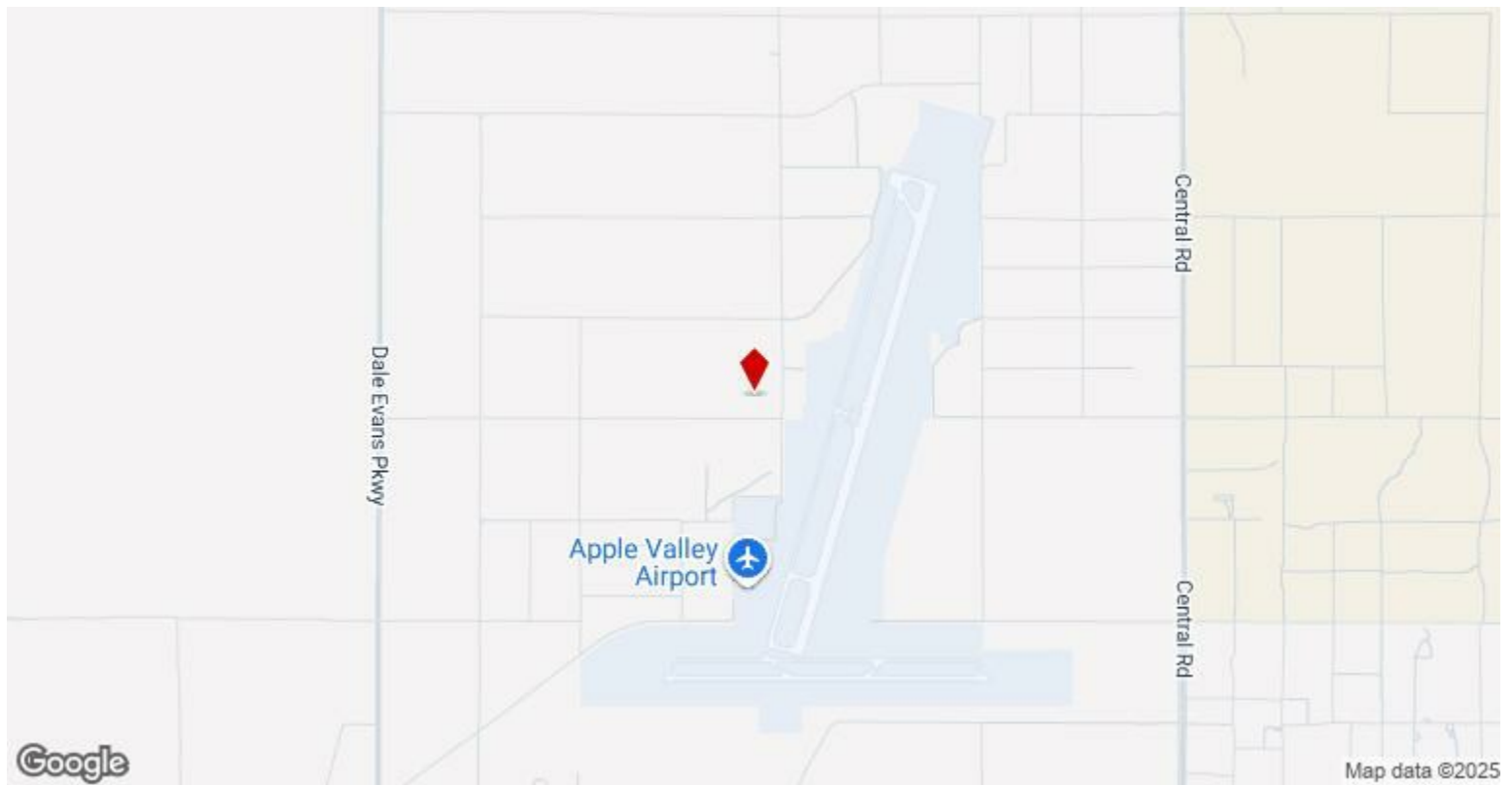
Lot Size:	8.60 Acres
-----------	------------

1

Office/House Size	1,000 SF
Lot Size	8.60 Acres
Date Available	October 01, 2025

Secure industrial storage yard with abundant outside storage space, ideal for contractors, construction companies, logistics providers, or service fleets. Suitable for heavy equipment, trucks and trailers, building materials, containers, and other industrial uses. Features a small office onsite, gated access, and ample room for fleet parking, laydown/staging, and material storage.





## 18142 Navajo Rd, Apple Valley, CA 92307

Versatile and secure industrial storage yard offering extensive outdoor storage space, well-suited for a wide range of industrial uses. Ideal for contractors, construction companies, logistics and distribution operators, and utility or service fleets. The yard can accommodate heavy equipment, trucks, trailers, containers, and industrial materials such as steel, pipe, and lumber. With a small onsite office, gated and fenced access, and truck-friendly circulation, this property provides an excellent solution for fleet parking, material staging, laydown yard operations, or general maintenance yard use.



## Property Photos





## Property Photos





## Property Photos



Yard Area



Storage Area



## Property Photos



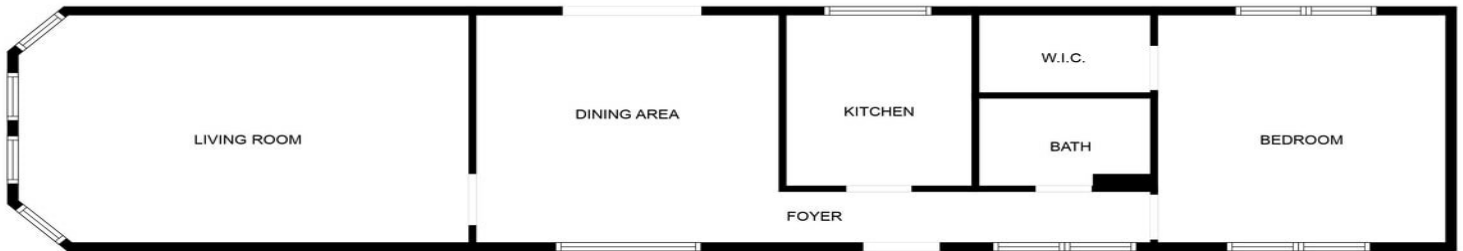


## Property Photos





# Property Photos



FLOOR PLAN CREATED BY CUBICASA APP. MEASUREMENTS DEEMED HIGHLY RELIABLE BUT NOT GUARANTEED.



Interior View

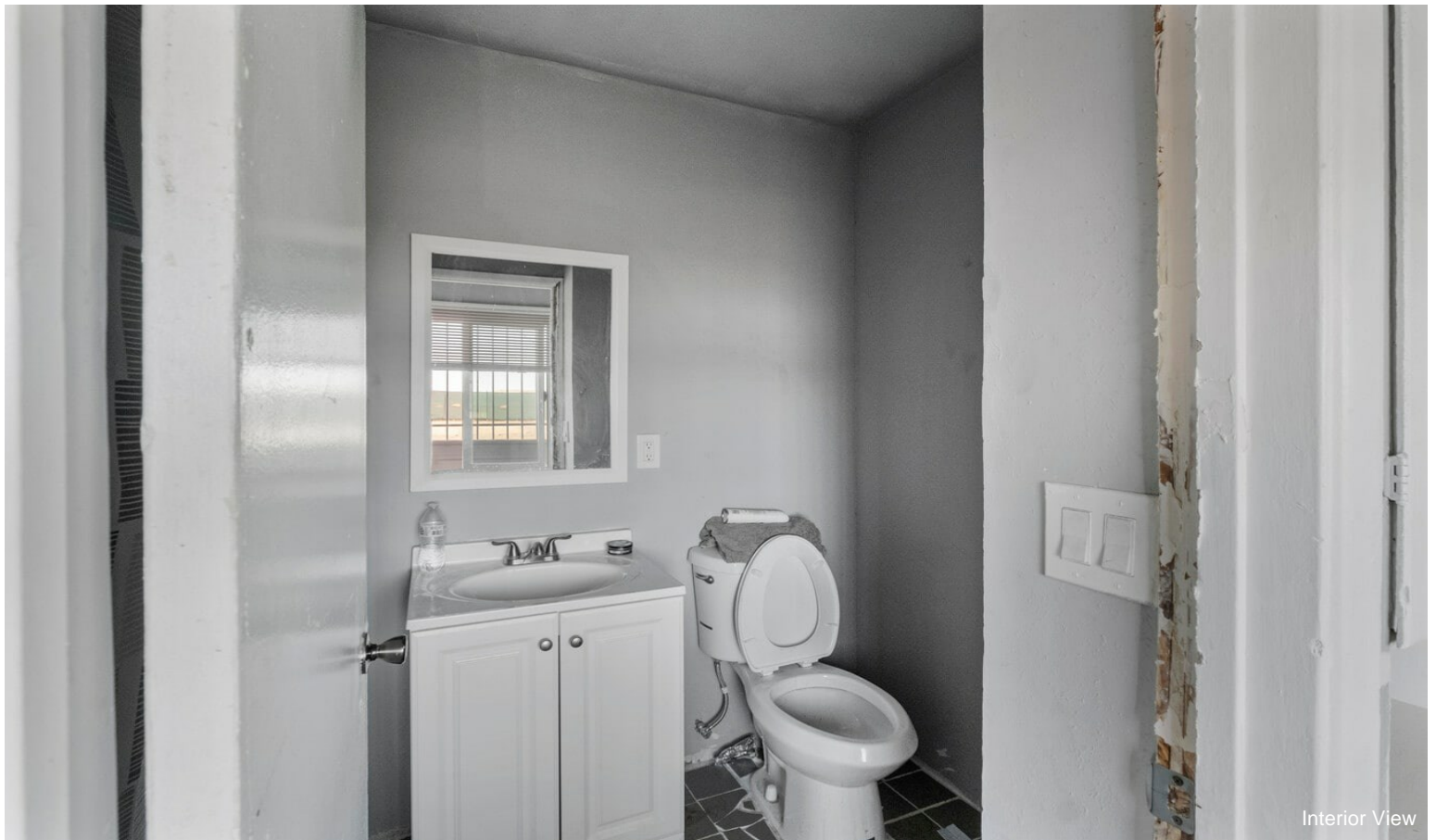


## Property Photos



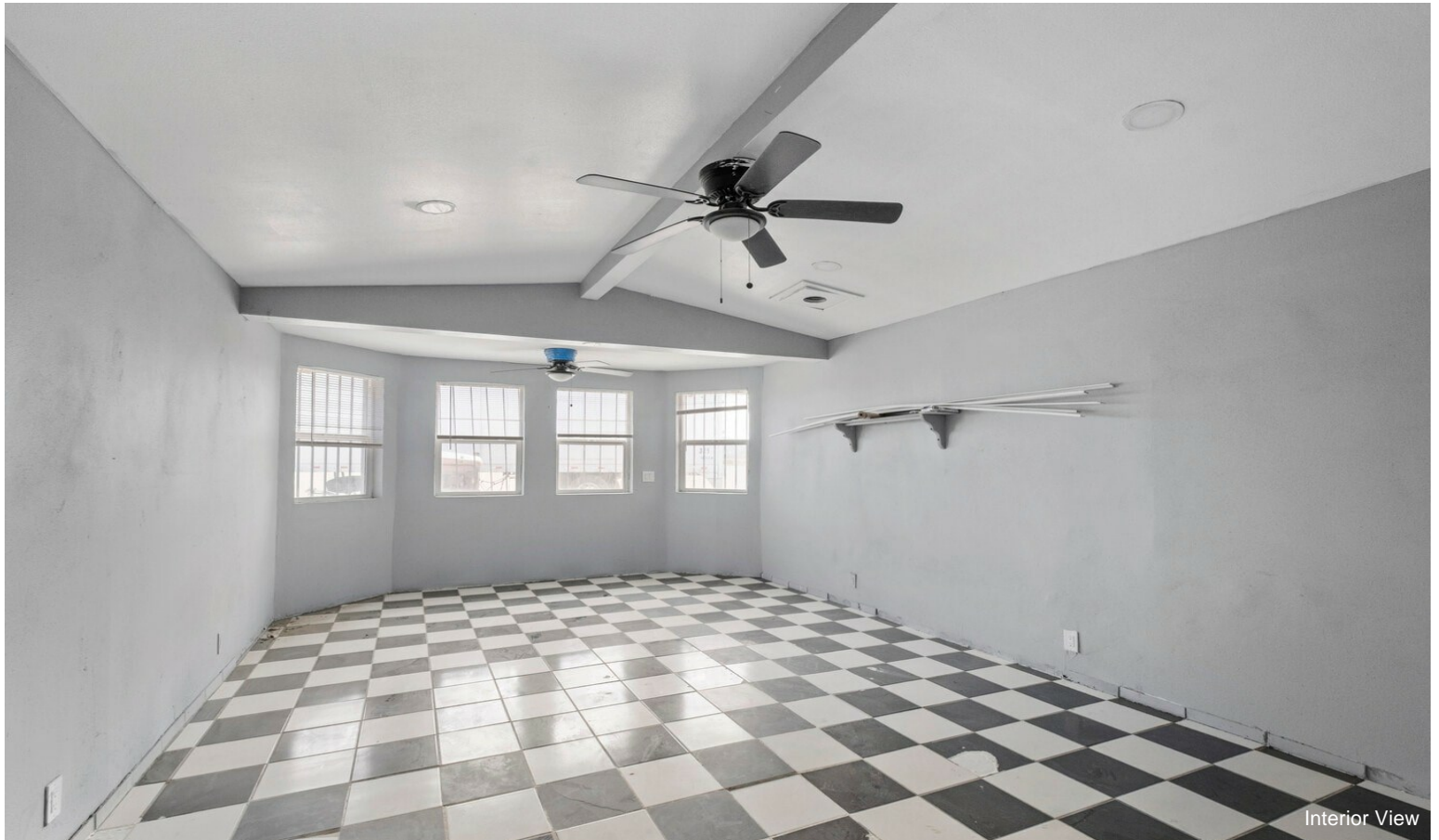


## Property Photos





## Property Photos





## Property Photos





## Property Photos



Interior View



Aerial View



## Property Photos





## Property Photos

