

MENLO PARK

611  
SANTA CRUZ  
AVENUE



retailwest



LOCKEHOUSE

SPACE DETAILS

# 611 SANTA CRUZ AVE



**SPACE AVAILABLE:** Suite A: ±1,335 SF & Suite B: ±1,500 SF  
 \*the two available spaces can be combined to ±2,835 SF

**ASKING RENT:** \$3.75 psf/mo NNN \$1.64 psf/mo

**ZONING:** "Retail / Mixed-Use, Downtown / Station Area"

High visibility / high traffic location.

Walking distance from CalTrain station and minutes from Stanford University.

Public parking behind building.

Strong demographics with 162,390 people & average income of \$270,192 within a three mile radius, and 57,317 employees within a two mile radius.

**NEIGHBORING TENANTS**

**TRADER JOE'S**

*Dräger's*  
MARKET

**S T A C K S**

**ANTHEM**  
SAN FRANCISCO

  
alys grace

Coffeebar

**PEABODY GALLERY**  
FINE ART AND FRAMING

  
LEFT BANK

**LUMINAIRE®**

retailwest

 **LOCKEHOUSE**

# 611 SANTA CRUZ AVE Suite A ±1,335 SF



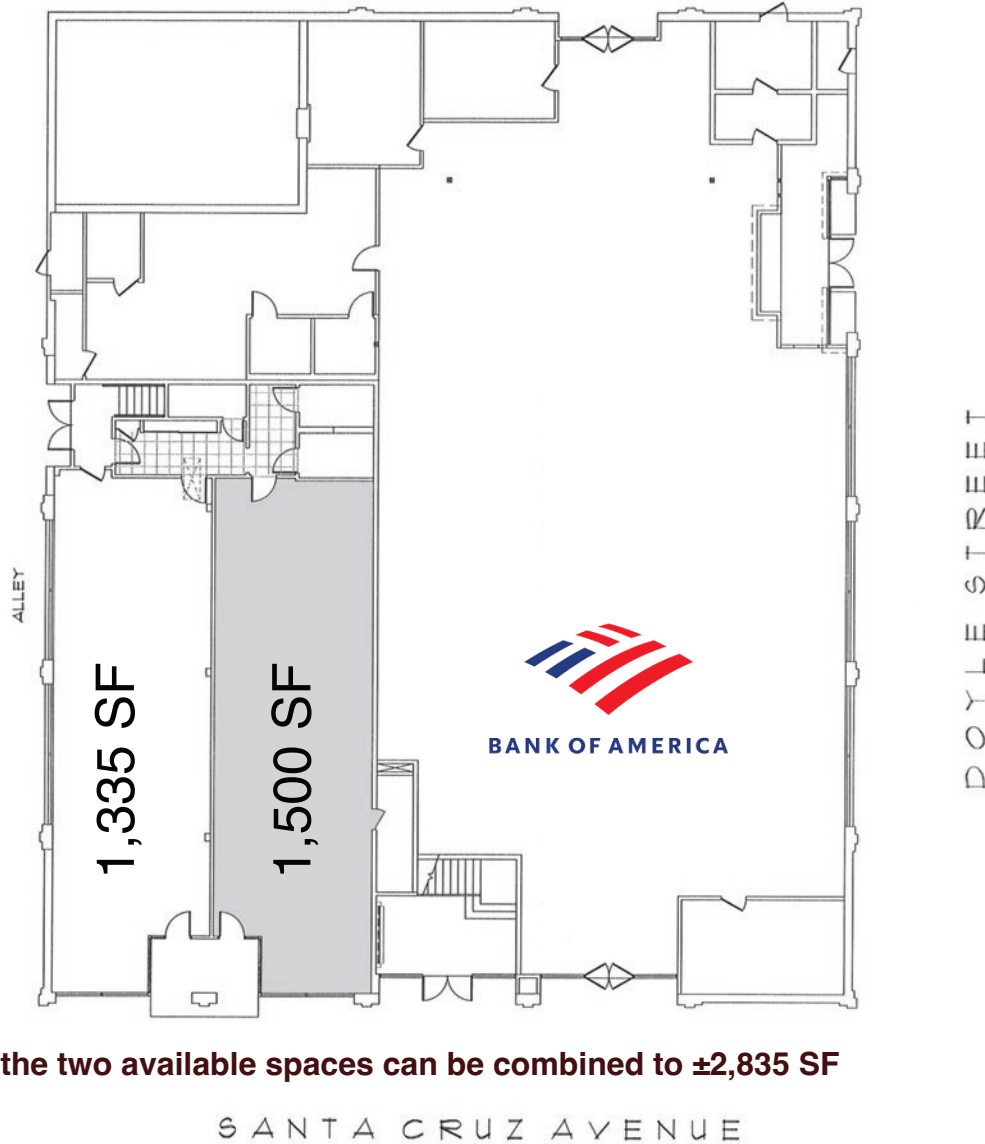
INTERIOR PHOTOS

611 SANTA CRUZ AVE Suite B ±1,500 SF



# SPACE DETAILS

# 611 SANTA CRUZ AVE



**\*the two available spaces can be combined to ±2,835 SF**

Annie Prupas  
Michael Seigel

annie@retailwestinc.com  
mseigel@lockehouse.com

415.919.7944  
650.597.6424

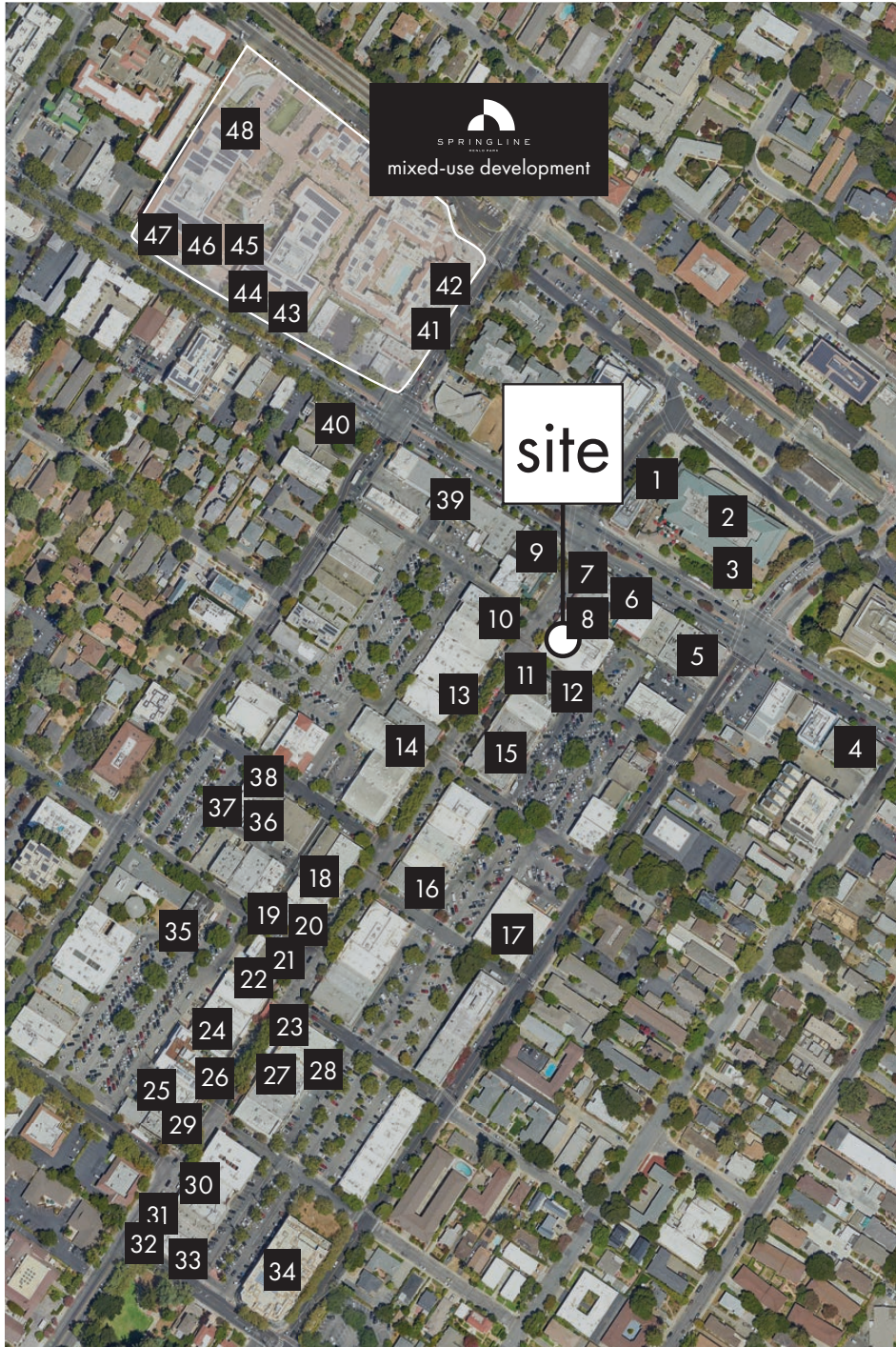
dre 01781411  
dre 01096257

retailwest



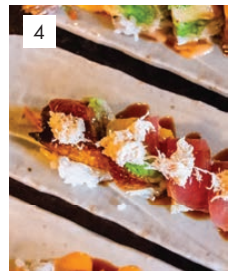
SPACE DETAILS

# 611 SANTA CRUZ AVE



## Downtown Menlo Park TRADE AREA

- |                               |                                      |
|-------------------------------|--------------------------------------|
| 1 British Bankers Club        | 25 Amici 's East Coast Pizzeria      |
| 2 Cafe Borrone                | 26 Luminaire                         |
| 3 Flegels Design              | 27 The Oriental Carpet               |
| 4 Octopus Japanese Restaurant | 28 Galata Bistro Mediterranean Grill |
| 5 Black Pepper                | 29 Design Matters                    |
| 6 Trellis Restaurant          | 30 The Main Gallery                  |
| 7 Peabody Gallery             | 31 Alys Grace                        |
| 8 Cold Stone Creamery         | 32 Peet's Coffee                     |
| 9 Stacks                      | 33 ANTHEM San Francisco              |
| 10 Menlo Cafe                 | 34 Dreger's Market                   |
| 11 Bistro Vida                | 35 The Refuge                        |
| 12 Left Bank                  | 36 Shiok! Singapore Kitchen          |
| 13 La Migliore Salon          | 37 Coffeabar Menlo Park              |
| 14 Menlo Park Hardware        | 38 Gerry's Cakes                     |
| 15 Starbucks                  | 39 Afterwards Furniture              |
| 16 Istanbul Rug               | 40 Round Table                       |
| 17 Trader Joe's               | 41 Bare Bottle Brew Co.              |
| 18 Ruby Living                | 42 Canteen                           |
| 19 Ristorante Carpaccio       | 43 Robin                             |
| 20 Bagel Street Café          | 44 Proper Food                       |
| 21 Stephen Miller Gallery     | 45 Che Fico                          |
| 22 Mademoiselle Colette       | 46 Andytown Coffee Roasters          |
| 23 Subway                     | 47 Burma Love                        |
| 24 Derby Interiors & Design   | 48 il Mercato di Che Fico            |



## 611 SANTA CRUZ AVE

## DEMOGRAPHICS

## EMPLOYMENT POPULATION

	1 MI	3 MI	5 MI
2023 Businesses	1,428	9,096	15,827
2023 Employess	15,275	111,230	203,979

## POPULATION

	1 MI	3 MI	5 MI
2023 Estimated Population	14,261	162,390	265,668
2028 Projected Population	13,804	156,864	256,119

## HOUSEHOLDS

	1 MI	3 MI	5 MI
2023 Estimated Households	6,563	55,940	94,369
2028 Projected Households	6,626	56,203	94,357

## INCOME

	1 MI	3 MI	5 MI
Average Household Income	\$319,125	\$270,192	\$287,356
Median Household Income	\$209,158	\$187,948	\$200,948

## CONTACT EXCLUSIVE AGENTS

Annie Prupas	annie@retailwestinc.com	415.919.7944	dre01781411
Michael Seigel	mseigel@lockehouse.com	650.597.6424	dre01096257

Retail West © 2024 | This information has been secured from sources we believe to be reliable, but we make no representations, or warranties, express or implied, as to the accuracy of the information. Listing broker has been given enough information to provide only preliminary due dilligence on the property. The materials are not to be considered fact. The information contained herein is not a substitute for a thorough due diligence investigation. Information to be verified by an interested party, and their advisors and consultants. By receiving these materials you are agreeing to the disclaimers set forth herein. DRE# 01445169