

FOR LEASE

# 520 9TH STREET Sacramento, CA

**CREATIVE OFFICE**  
**HIDDEN GEM IN DOWNTOWN'S**  
**CENTRAL BUSINESS DISTRICT!**

TAKE VIRTUAL TOUR  
CLICK HERE



**EXCLUSIVELY LISTED BY:**

**TONY WHITTAKER**

+1 916 492 6914

TONY.WHITTAKER@CBRE.COM

LIC. 01780828

**JASON GOFF**

+1 916 446 8222

JASON.GOFF@CBRE.COM

LIC. 01205230

**NELLIE CRUZ**

+1 916 492 6915

NELLIE.CRUZ@CBRE.COM

LIC. 02086140

**CBRE**

# PROPERTY FEATURES

## PROPERTY DESCRIPTION

**520-530 9TH STREET** is a two-story mixed-use office and residential project comprised of 19,989 rentable square feet in the Downtown submarket of Sacramento. The project features a central lightwell, many skylights throughout, and window lines which provide an abundance of natural light, a huge amenity of the spaces.



Total Building Size

±19,989 SF



Parking Ratio

±2.0/1,000 SF



Reduced Lease Rate!

\$1.90/SF

## AFFORDABLE ALTERNATIVE IN DOWNTOWN



CLOSE WALK TO  
THE COURTHOUSE



PROXIMITY TO  
NUMEROUS RETAIL  
AMENITIES



COVERED SECURED  
PARKING



MOVE-IN  
READY SPACE



## AVAILABILITY

- SUITE 200  
±1,234 RSF
- SUITE 230  
±2,000–4,925 RSF

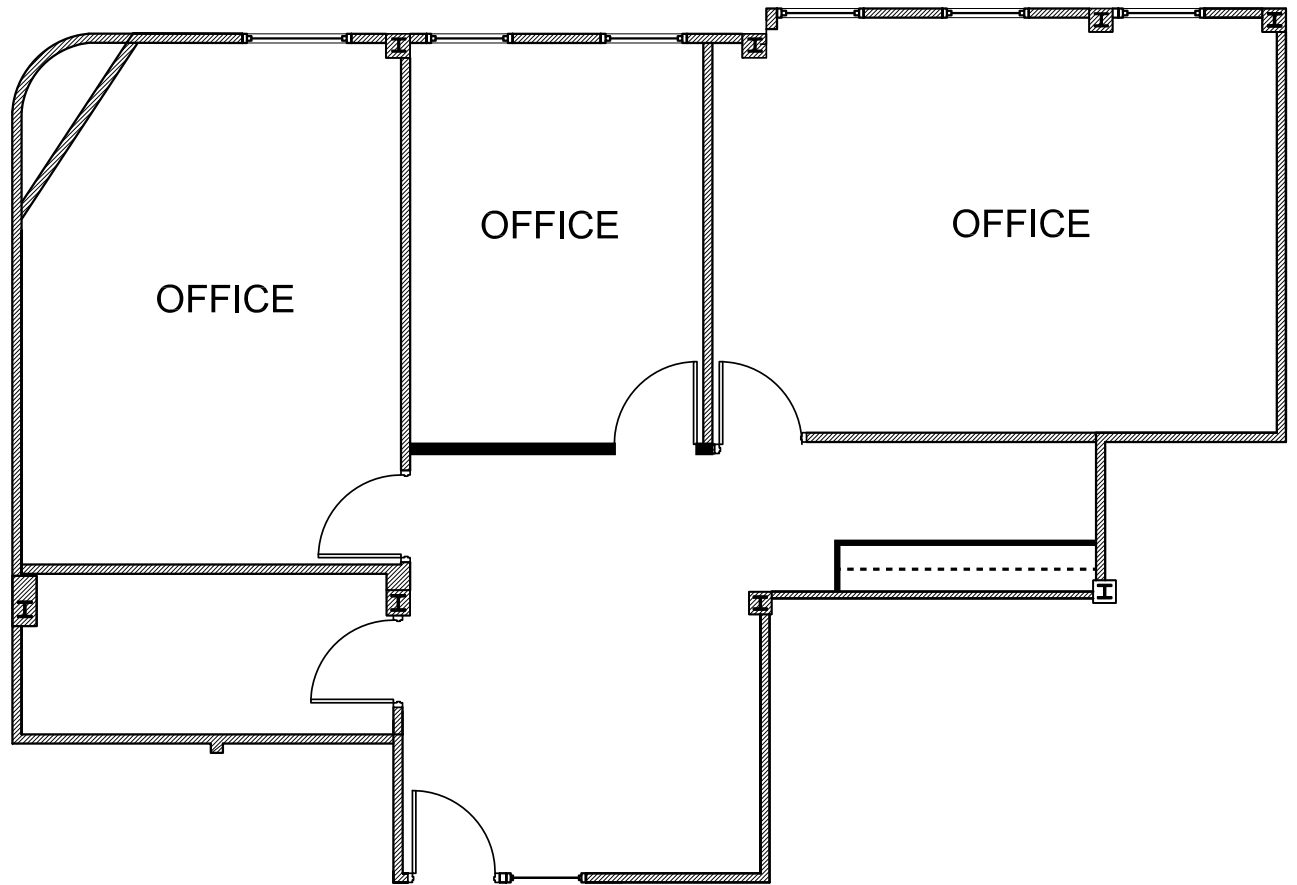
## CREATIVE OFFICE SPACE



# FLOOR PLAN



SUITE 200  
±1,234 RSF



TAKE VIRTUAL TOUR  
CLICK HERE

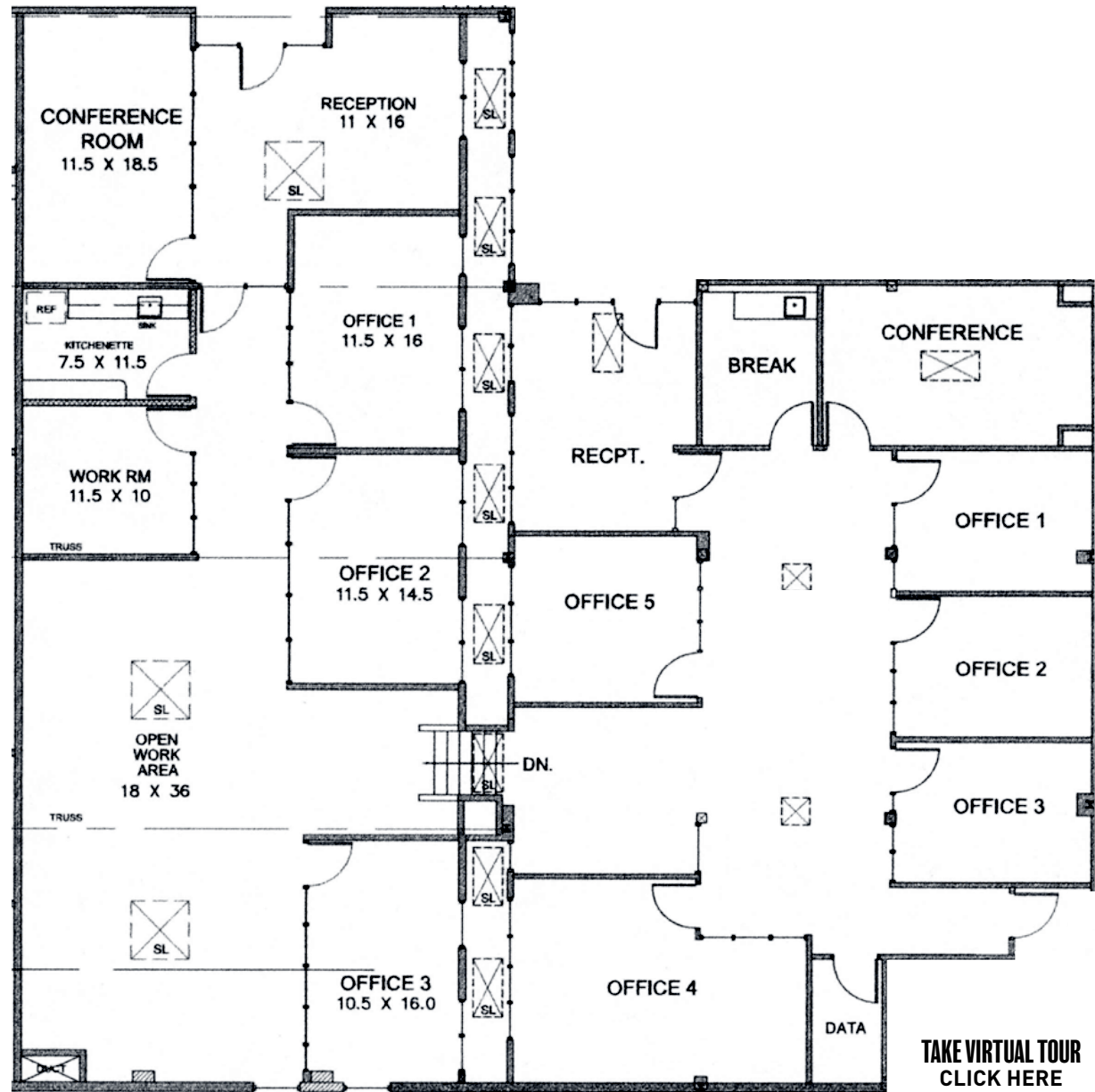


# FLOOR PLAN



SUITE 230

±2,000–  
4,925 RSF



TAKE VIRTUAL TOUR  
CLICK HERE



FOR LEASE | 520 9TH STREET, SACRAMENTO, CA





SUITE  
PHOTOS

# URBAN LIFESTYLE



## DOWNTOWN SACRAMENTO CITY SITES & AMENITIES

- |                                      |                       |                           |
|--------------------------------------|-----------------------|---------------------------|
| 1 Golden 1 Center                    | 10 Railyards District | 18 Sutter's Fort          |
| 2 Kimpton Sawyer Hotel               | 11 Southside Park     | 19 Matsui Waterfront Park |
| 3 Punch Bowl Social                  | 12 Capitol Park       | 20 The Ice Blocks         |
| 4 DOCO                               | 13 Sutter Health Park | 21 The Press              |
| 5 Old Sacramento Historic Waterfront | 14 Bridge District    |                           |
| 6 State Capitol                      | 15 Drakes the Barn    |                           |
| 7 Cesar Chavez Park                  | 16 Tower Bridge       |                           |
| 8 Amtrak Station                     | 17 R Street Corridor  |                           |
| 9 Crocker Art Museum                 |                       |                           |

**520  
9TH ST.**

## SACRAMENTO'S MOST LIVELY NEIGHBORHOODS

**DOWNTOWN** and **MIDTOWN** are Greater Sacramento's cultural center. Within the 500+ blocks known as "the Grid," some of the city's best restaurants, shops and attractions are easily explored via foot, bike or electric scooter.





FOR LEASE

# 520 9TH STREET

Sacramento, CA

EXCLUSIVELY LISTED BY:

**TONY WHITTAKER**

+1 916 492 6914

SENIOR VICE PRESIDENT  
TONY.WHITTAKER@CBRE.COM  
LIC. 01780828

**JASON GOFF**

+1 916 446 8222

EXECUTIVE VICE PRESIDENT  
JASON.GOFF@CBRE.COM  
LIC. 01205230

**NELLIE CRUZ**

+1 916 492 6915

VICE PRESIDENT  
NELLIE.CRUZ@CBRE.COM  
LIC. 02086140

[WWW.CBRE.COM/SACRAMENTO](http://WWW.CBRE.COM/SACRAMENTO) | CBRE - 500 CAPITOL MALL, 24TH FLOOR, SACRAMNETO, CA 95814

© 2024 CBRE, Inc. All rights reserved. This information has been obtained from sources believed reliable, but has not been verified for accuracy or completeness. You should conduct a careful, independent investigation of the property and verify all information. Any reliance on this information is solely at your own risk. CBRE and the CBRE logo are service marks of CBRE, Inc. All other marks displayed on this document are the property of their respective owners, and the use of such logos does not imply any affiliation with or endorsement of CBRE. Photos herein are the property of their respective owners. Use of these images without the express written consent of the owner is prohibited.PMStudio\_November2024

**CBRE**