

15 MATTHEWS ST

GOSHEN, NY 10924

OFFICE FOR LEASE



Property Description

Introducing a premier leasing opportunity at 15 Matthews St, Goshen, NY 10924. This meticulously maintained property offers modern amenities and flexible floor plans to accommodate a variety of business needs. Boasting abundant natural light, spacious work areas, and sleek finishes, this space is designed to inspire productivity and collaboration. With ample parking and easy access to main thoroughfares, the property provides convenience for employees and clients alike. Whether you're seeking a professional office or an innovative workspace, this location offers the ideal foundation for your business to thrive. Elevate your work environment and make a lasting impression in this exceptional leasing opportunity.

Property Highlights

Offering Summary

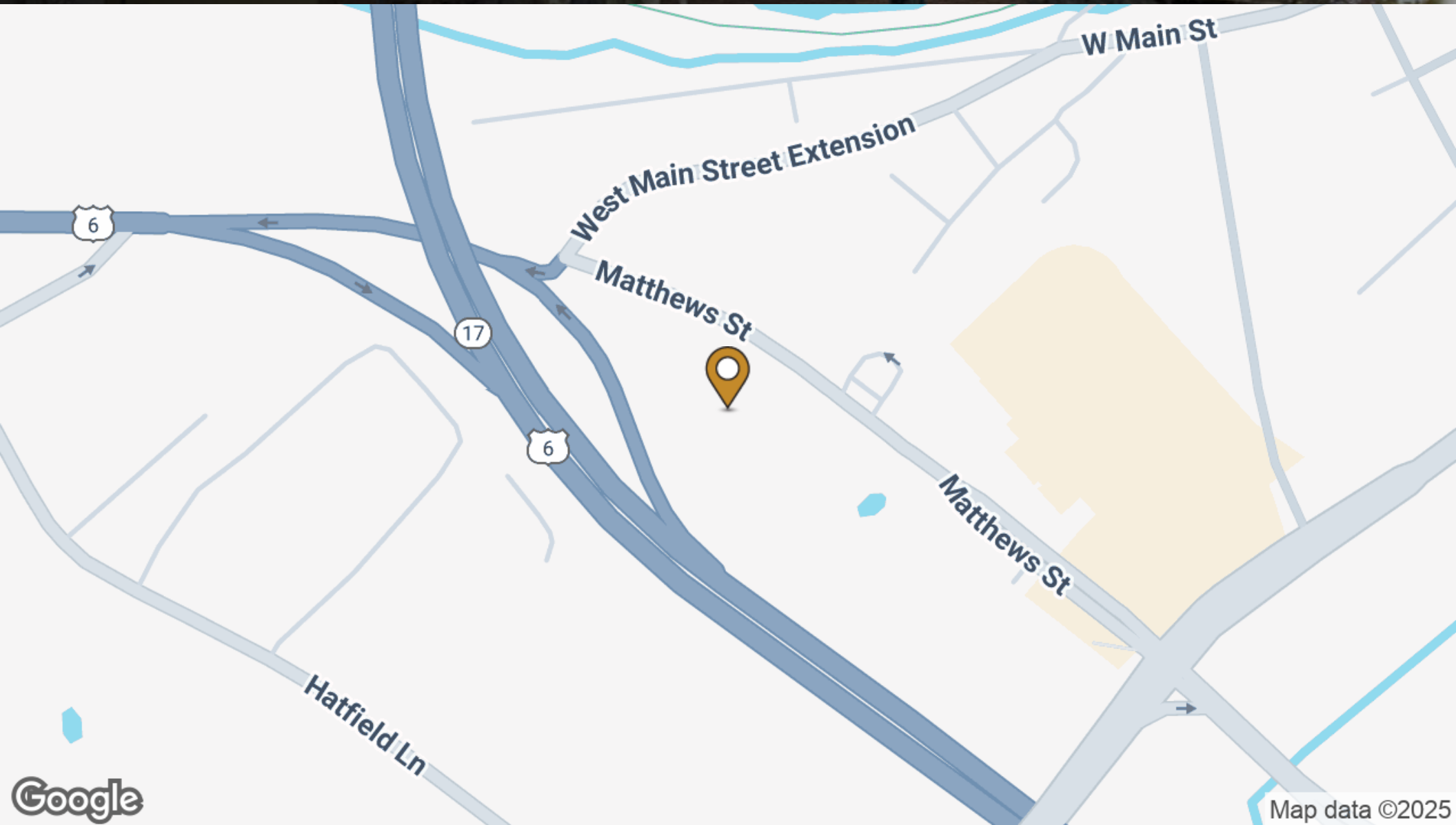
Lease Rate:	\$11.00 - 26.00 SF/yr (Gross)
Number of Units:	61
Available SF:	258 - 7,500 SF
Lot Size:	105,996 SF
Building Size:	42,210 SF

Demographics	0.3 Miles	0.5 Miles	1 Mile
Total Households	185	519	1,452
Total Population	428	1,208	3,567
Average HH Income	\$128,920	\$123,847	\$124,619

15 MATTHEWS ST

GOSHEN, NY 10924

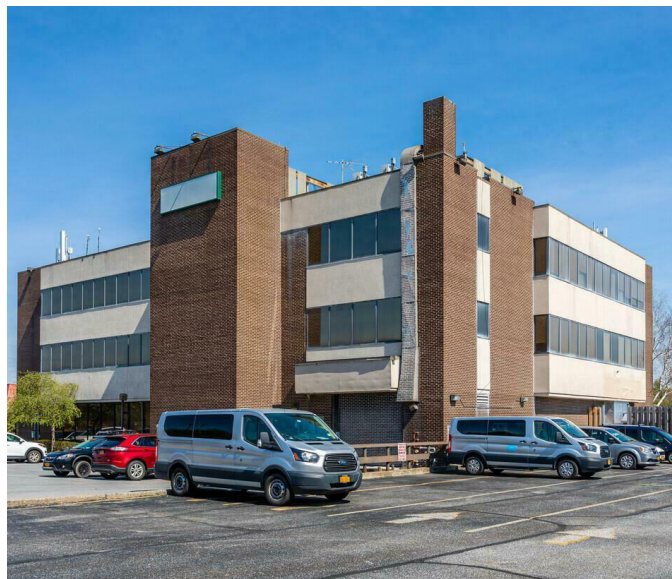
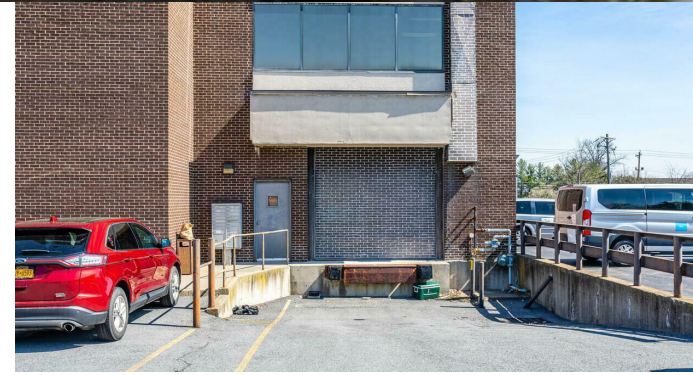
OFFICE BUILDING FOR LEASE



15 MATTHEWS ST

GOSHEN, NY 10924

OFFICE BUILDING FOR LEASE



15 MATTHEWS ST

GOSHEN, NY 10924

OFFICE BUILDING FOR LEASE

Population	0.3 Miles	0.5 Miles	1 Mile
Total Population	428	1,208	3,567
Average Age	43	45	44
Average Age (Male)	41	42	42
Average Age (Female)	45	47	46

Households & Income	0.3 Miles	0.5 Miles	1 Mile
Total Households	185	519	1,452
# of Persons per HH	2.3	2.3	2.5
Average HH Income	\$128,920	\$123,847	\$124,619
Average House Value	\$535,074	\$499,352	\$455,906

Demographics data derived from AlphaMap

