



## Former John Deere Dealership and Service Center

24800 W. 53<sup>rd</sup> St Andale, KS 67001

### Property Highlights

- 27,120 SF
  - 3,480 SF office/showroom
  - 23,640 SF warehouse/shop space
- Lot size: 9.07 Acres
- Ceiling height in the shop ranges from 14' to 26'
- New roof in 2022
- Available in Spring of 2027

### Property Overview

Situated in Andale, Kansas, this well-maintained 27,120 SF industrial facility offers a blend of functionality, modern updates, and exceptional versatility. The building includes 3,480 SF of office and showroom space and 23,640 SF of warehouse and shop area, ideal for manufacturing, distribution, or service operations. The shop features ceiling heights ranging from 14 to 26 feet, accommodating a variety of equipment and storage needs. A new roof installed in 2022 adds peace of mind and long-term value. Conveniently located near Wichita with easy access to regional routes, this property delivers a strong combination of quality construction, practical design, and a strategic small-town location.

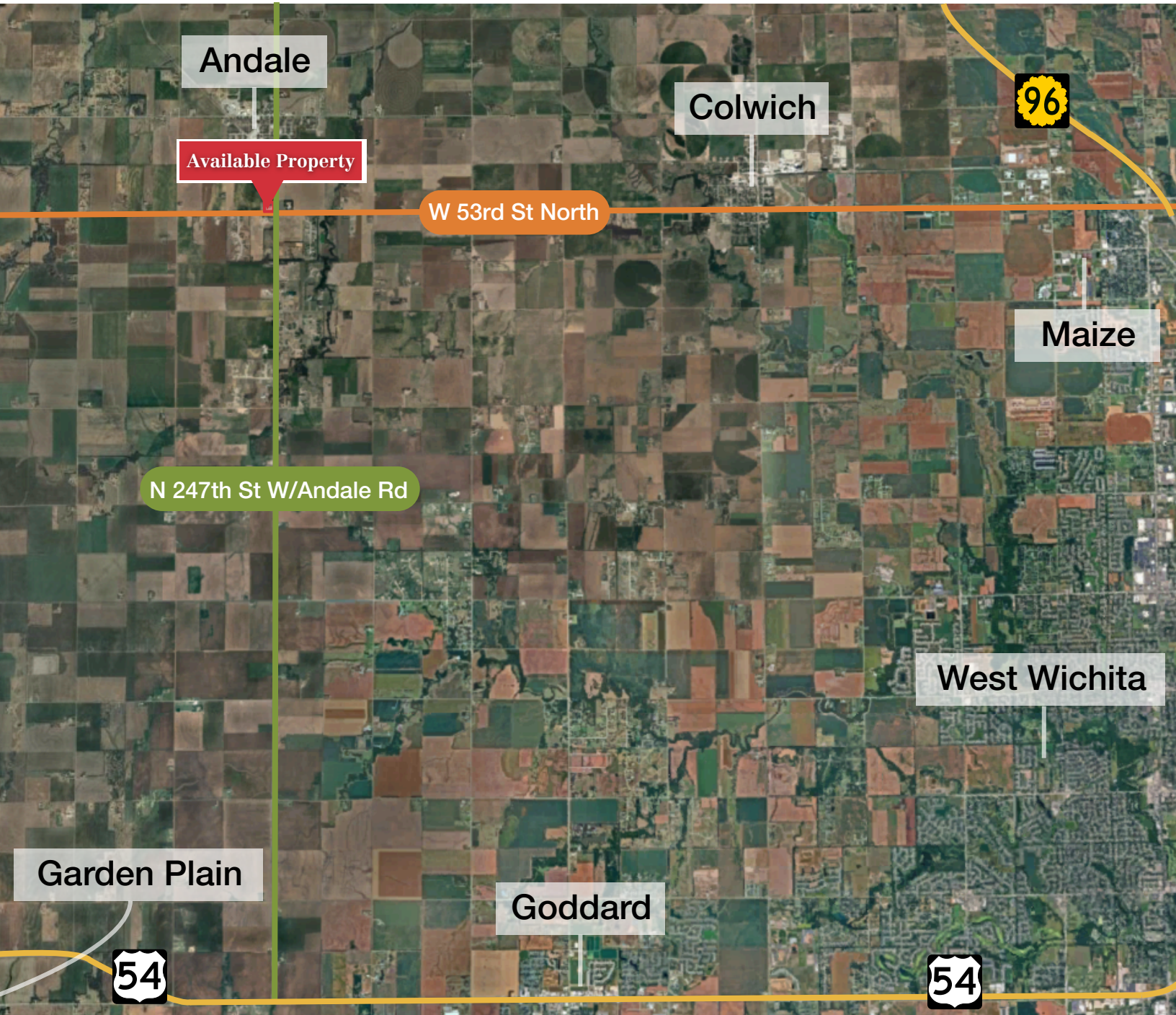
### For More Information:

**Grant Glasgow, SIOR**

O: 316 847 4908

[gglasgow@naimartens.com](mailto:gglasgow@naimartens.com)





### Distances

US 54/400	8 miles/10 minutes
K-96/Maize via 53 <sup>rd</sup> St	10 miles/15 minutes

Colwich	5 miles/6 minutes
Goddard	11 miles/12 minutes

West Wichita	14 miles/18 minutes
Garden Plain	21 miles/27minutes