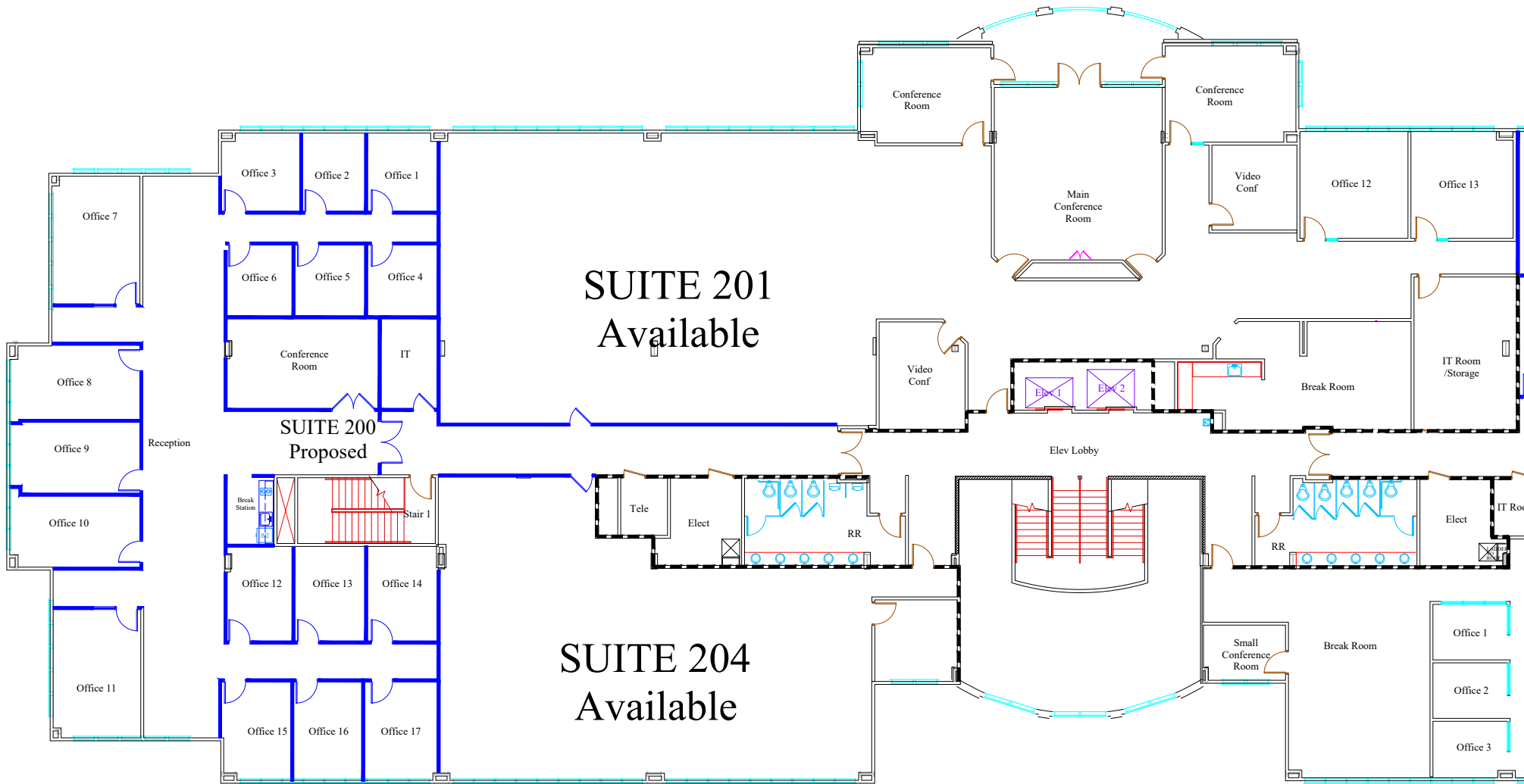


# 146 Fairchild Street

Daniel Island, SC, 29492

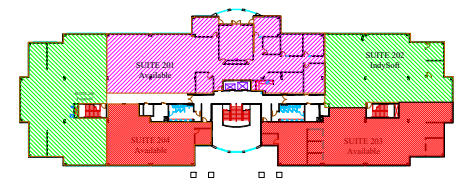


SUITE 201  
Available

SUITE 200  
Proposed

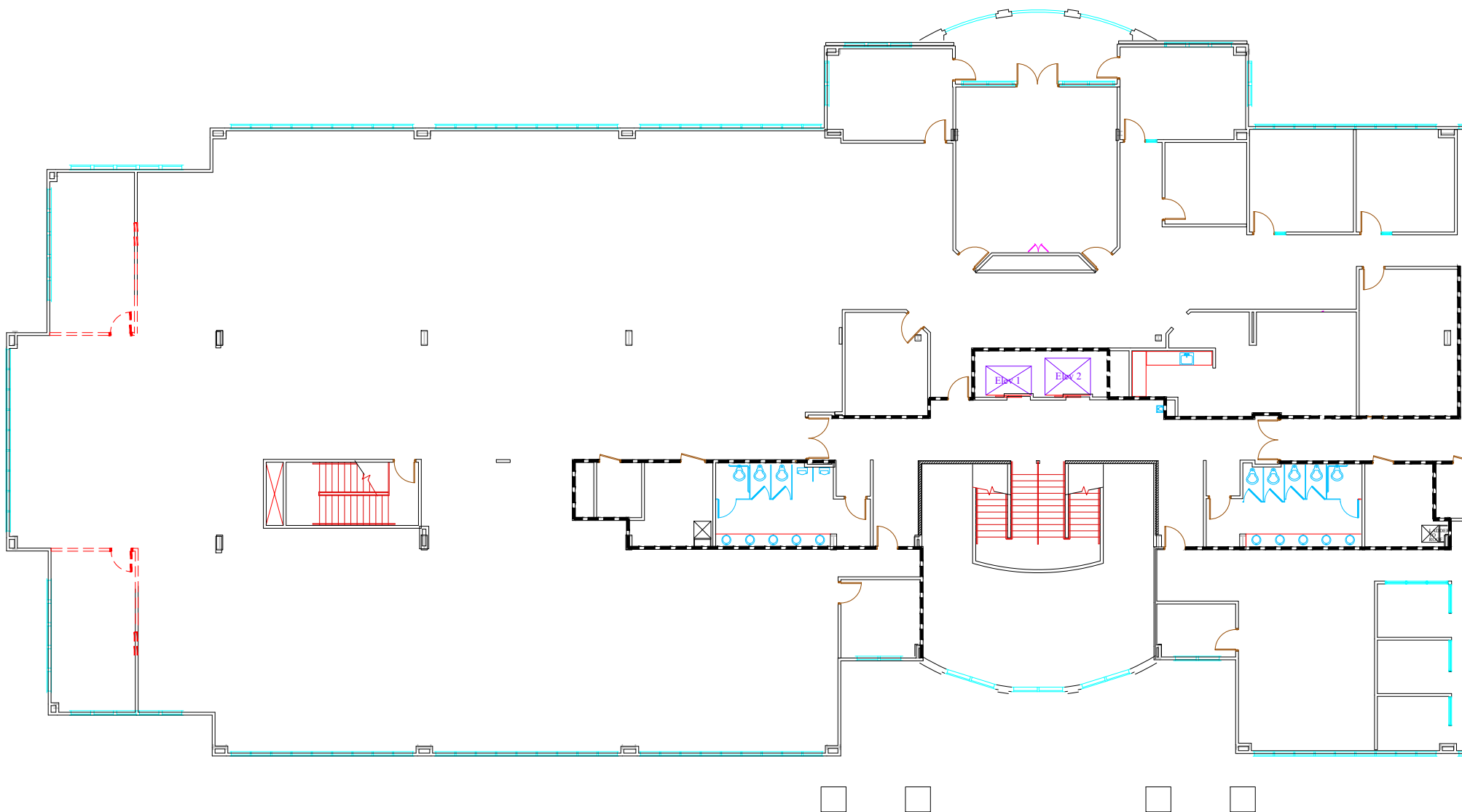
SUITE 204  
Available

Gross Measured Area	
Space Description	RSF
SUITE 200 PROPOSED	5561
SUITE 201 AVAILABLE	7950
SUITE 202 - INDYSOFT	4836
SUITE 203 AVAILABLE	5476
SUITE 204 AVAILABLE	2729
	26552



# 146 Fairchild Street

Daniel Island, SC, 29492



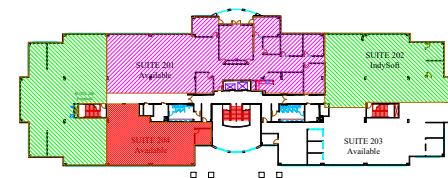
Prepared by  
**D2 CONSULTING**  
1432 D Avenue  
West Columbia, SC, 29169  
t-803-622-9037  
f-877-651-9982



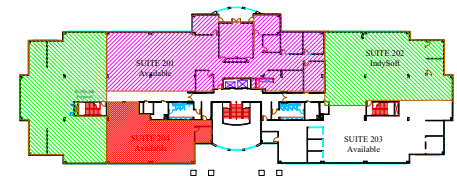
These drawings are provided solely for graphic representation purposes. D2 Consulting shall not be held liable for any and all misstatements of facts, errors or omissions, prior sale, change of price or withdrawal from the market without notice, or damages connected with use of this information. Recipient acknowledges that acceptance of these files effectively transfers any and all responsibility to recipient for use of this information.

ALL INFORMATION/DIMENSIONS SHOULD BE FIELD VERIFIED.  
FOR DISCUSSION PURPOSES ONLY. NOT FOR CONSTRUCTION.

This drawing and design in paper and electronic format are the property of Chas Industrial. Any use of the drawing, design or electronic file without written consent from Chas Industrial is subject to legal action. All Copyrights Apply.



Published on Tuesday, May 20, 2025 10:37:33 AM - FILE NAME - 146\_Fairchild\_2ndfl\_Prop\_05202025.dwg



These drawings are provided solely for graphic representation purposes. D2 Consulting shall not be held liable for any and all misstatements of facts, errors or omissions, prior sale, change of price or withdrawal from the market without notice, or damages connected with use of this information. Recipient acknowledges that acceptance of these files effectively transfers any and all responsibility to recipient for use of this information.

ALL INFORMATION/DIMENSIONS SHOULD BE FIELD VERIFIED.  
FOR DISCUSSION PURPOSES ONLY. NOT FOR CONSTRUCTION.