

# BROWN ROAD ORION TWP, MICHIGAN

LAND/BUILD-TO-SUIT FOR LEASE  
17.31 Acres Available



**SIGNATURE  
ASSOCIATES**  
KNOW SIGNATURE | KNOW RESULTS

**HIGH VISIBILITY AREA**



## PROPERTY FEATURES

- 17.31 acres available
- Industrial build-to-suit 85,000-160,000 sq. ft.
- Zoned industrial
- Site is adjacent to and west of 1427 Brown Rd.
- Utilities, sewers at Brown Road, outside storage possible
- Tax abatement possible for qualified users
- Contact broker for pricing information



For more information, please contact:

**JOE BANYAI**  
(248) 948 0108  
jbanyai@signatureassociates.com

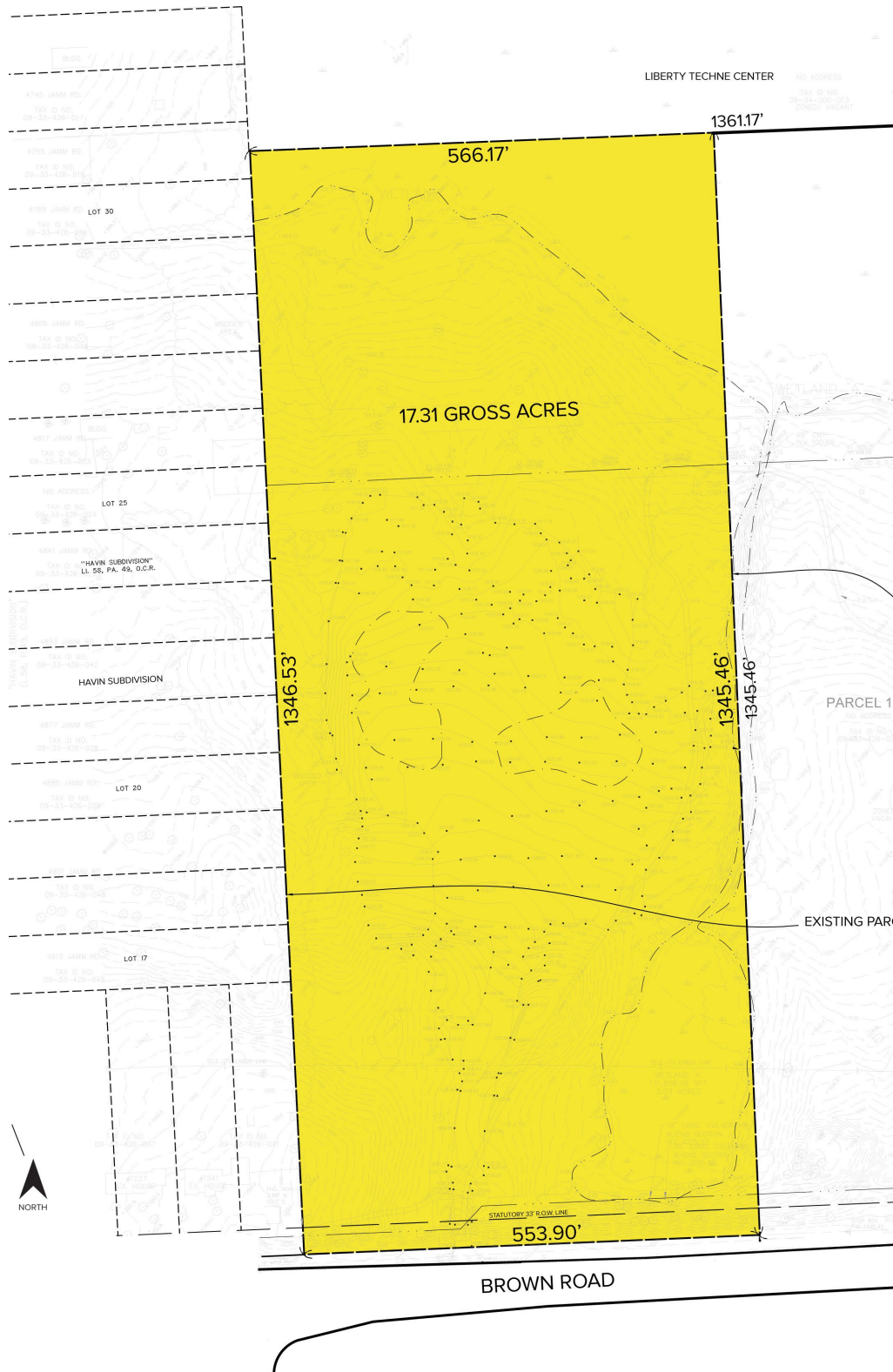
**SIGNATURE ASSOCIATES**  
One Towne Square, Suite 1200  
Southfield, MI 48076  
www.signatureassociates.com

# Brown Road – Orion Twp., Michigan

## Land/Industrial Build-To-Suit For Lease

17.31  
Acres  
AVAILABLE

### Site Plan



For more information, please contact:

**JOE BANYAI**  
(248) 948 0108  
jbanyai@signatureassociates.com

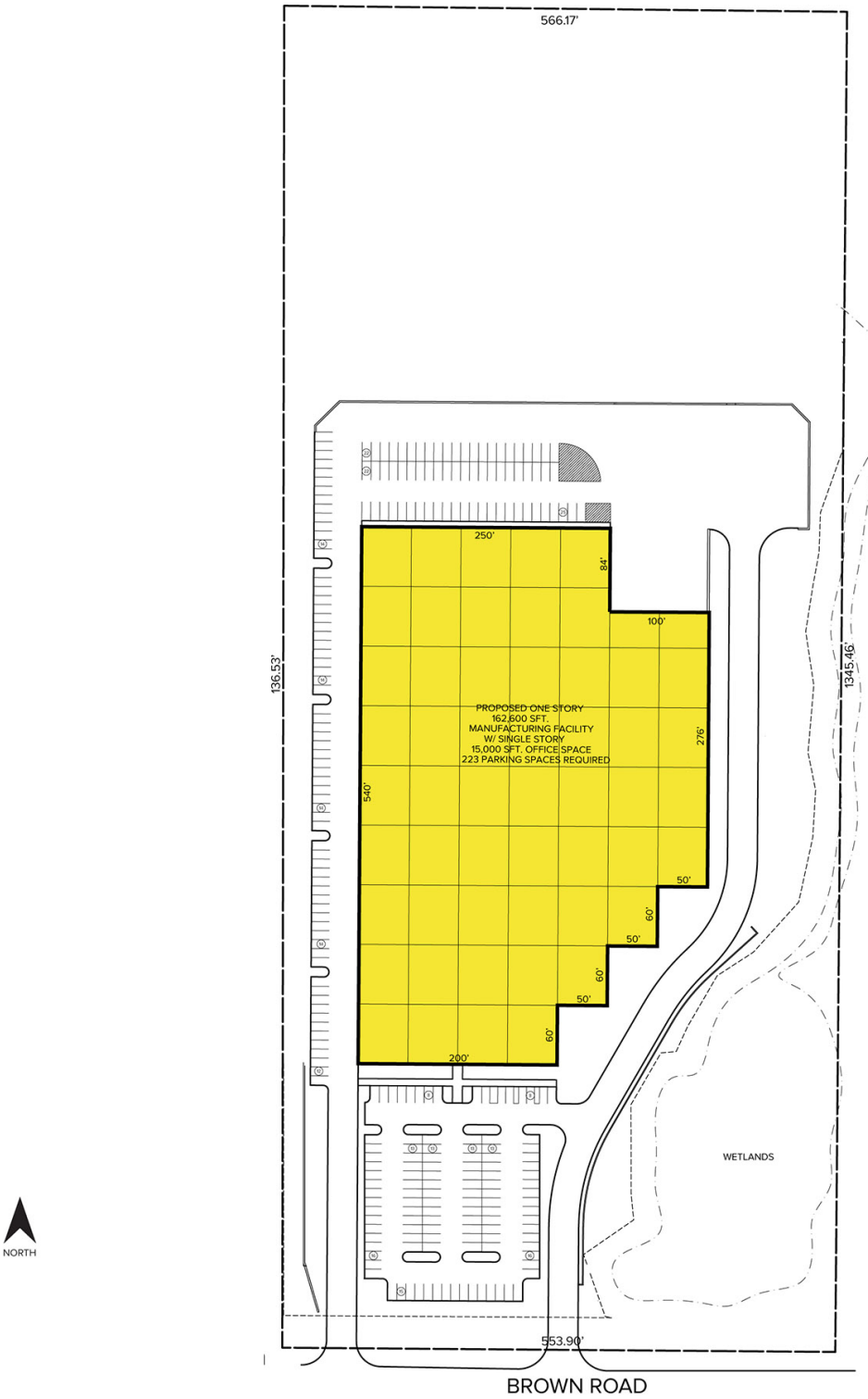
**SIGNATURE ASSOCIATES**  
One Towne Square, Suite 1200  
Southfield, MI 48076  
www.signatureassociates.com

# Brown Road – Orion Twp., Michigan

## Land/Industrial Build-To-Suit For Lease

17.31  
Acres  
AVAILABLE

### Proposed Site Plan – One Building



For more information, please contact:

**JOE BANYAI**  
(248) 948 0108  
jbanyai@signatureassociates.com

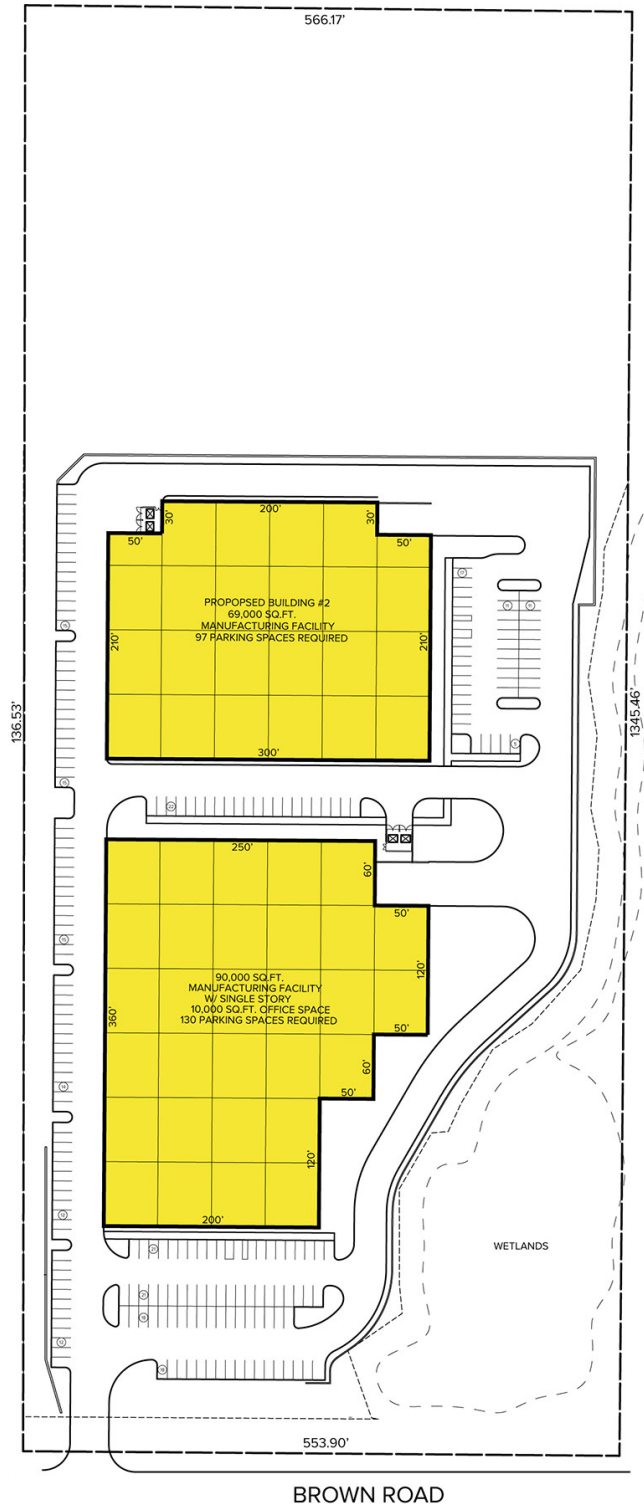
**SIGNATURE ASSOCIATES**  
One Towne Square, Suite 1200  
Southfield, MI 48076  
www.signatureassociates.com

# Brown Road – Orion Twp., Michigan

## Land/Industrial Build-To-Suit For Lease

17.31  
Acres  
AVAILABLE

### Proposed Site Plan – Two Buildings



For more information, please contact:

**JOE BANYAI**  
(248) 948 0108  
jbanyai@signatureassociates.com

**SIGNATURE ASSOCIATES**  
One Towne Square, Suite 1200  
Southfield, MI 48076  
www.signatureassociates.com