

3838

CHARLES RAPER JONAS HWY



**±119,377 SF of
Industrial Space &
±2.0 AC of IOS Space
Available for Lease**



CONTACT BROKERS FOR MORE INFORMATION

Colin Ferguson
Vice President
704-512-0139
colin.ferguson@avisonyoung.com

Ryan Kendall
Vice President
704 612 0395
ryan.kendall@avisonyoung.com

Ian Leavitt
Associate
704 551 8354
ian.leavitt@avisonyoung.com





**AVISON
YOUNG**

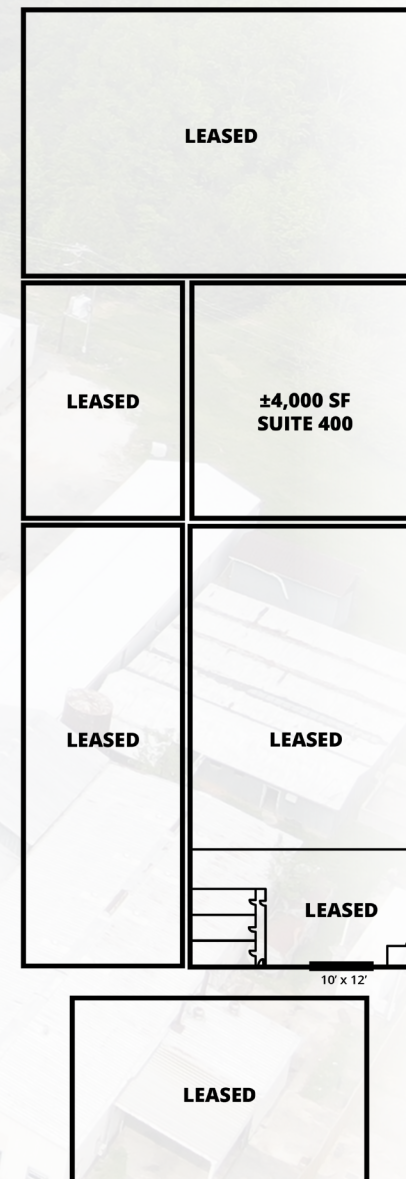
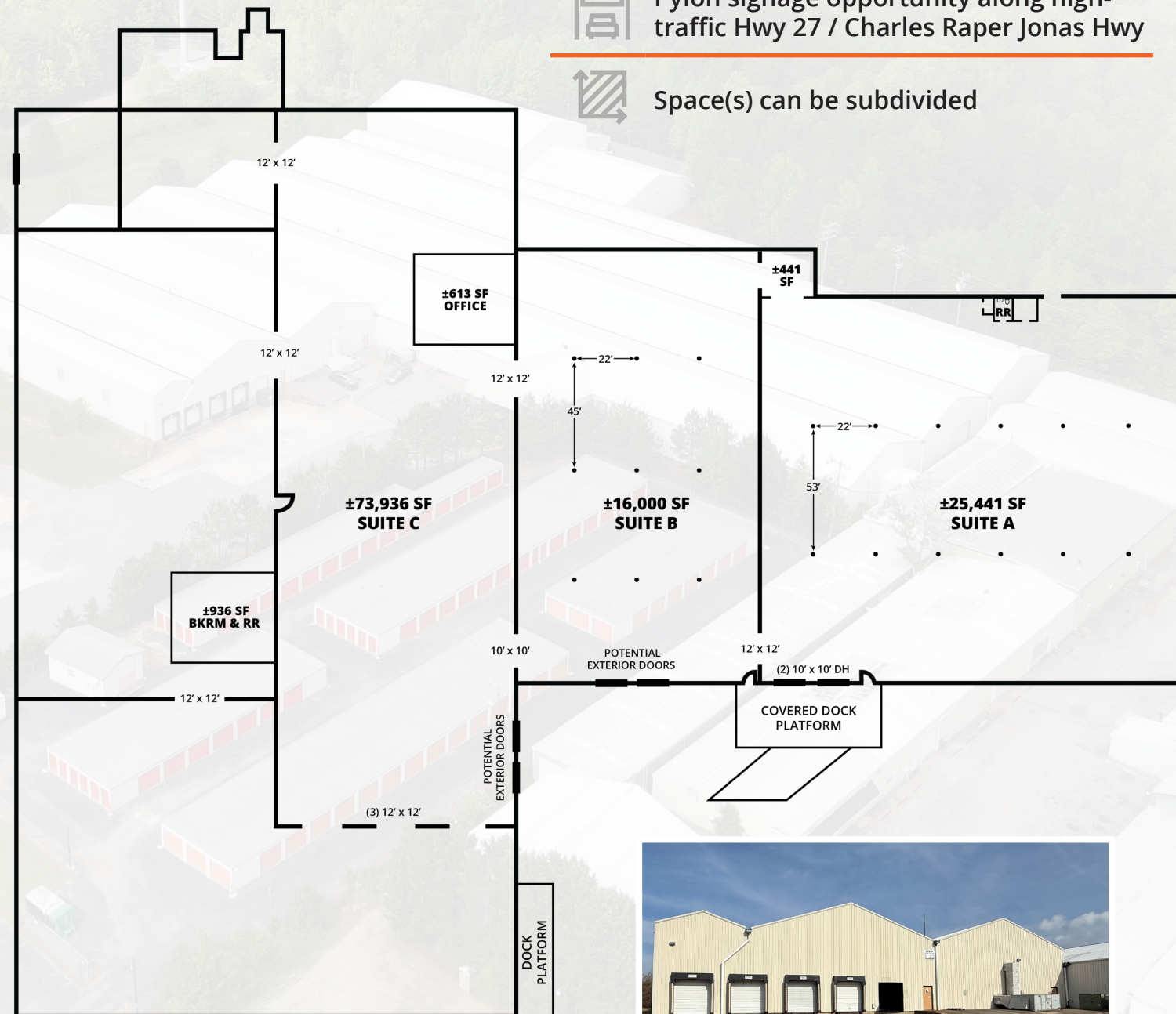
INDUSTRIAL SPACE & IOS FOR LEASE

3838 Charles Raper Jonas Hwy, Stanley, NC 28164



Property features

-  Six 10' x 10' dock high doors
-  Outdoor storage opportunities available
-  Pylon signage opportunity along high-traffic Hwy 27 / Charles Raper Jonas Hwy
-  Space(s) can be subdivided

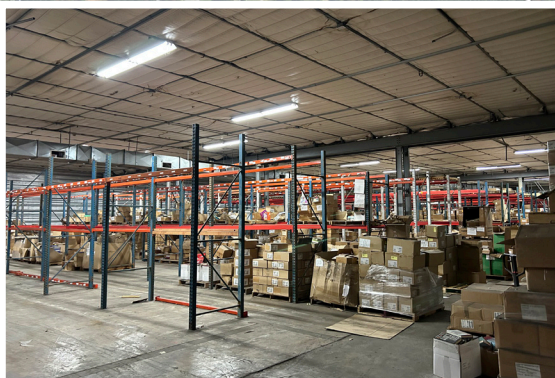
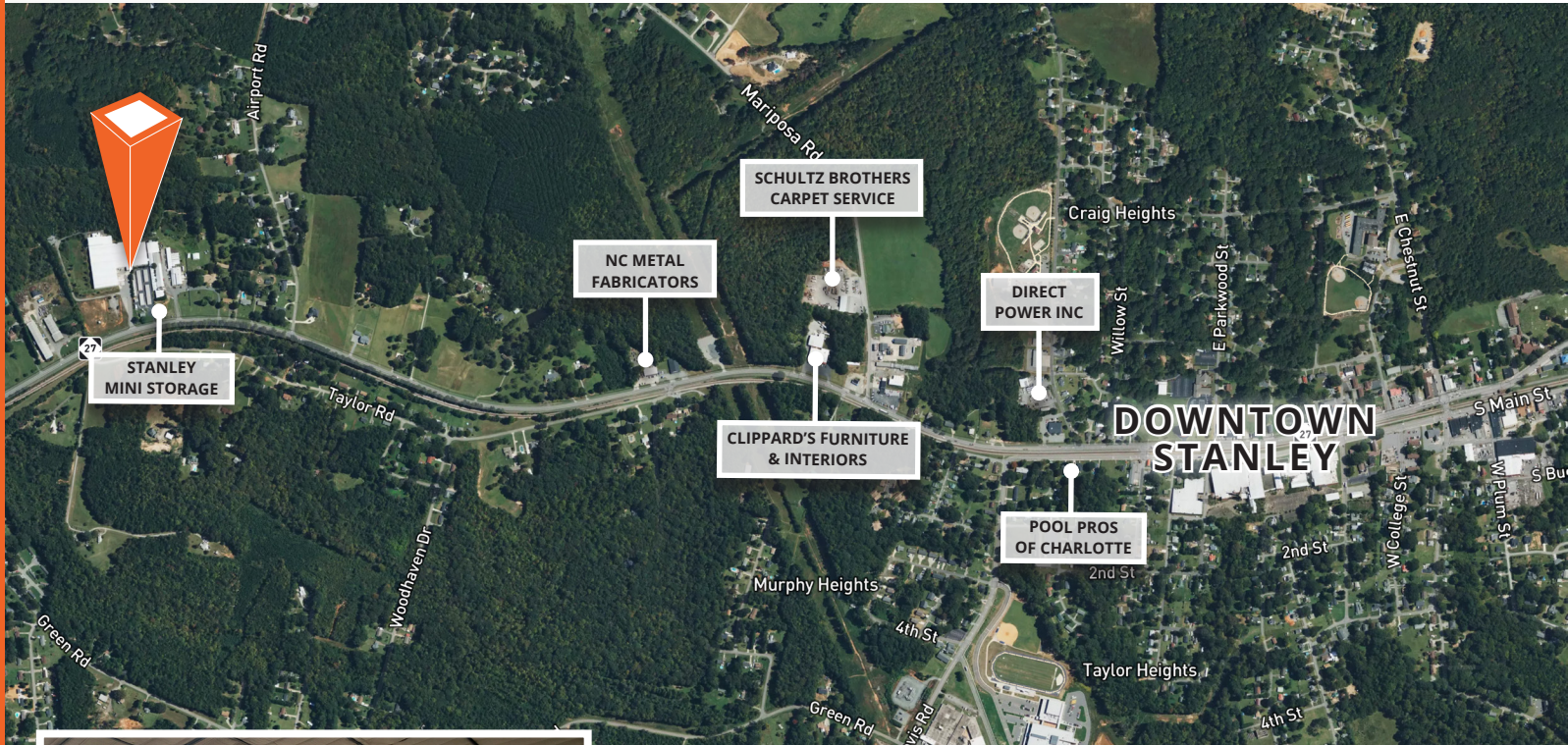


Property details

Total Available SF:	±119,377 SF
Available Suite (A):	±25,441 SF
Available Suite (B):	±16,000 SF
Available Suite (C):	±73,936 SF
Available Suite (400):	±4,000 SF
Total IOS Lot Acreage:	±2.0 AC
Available IOS Lot (A):	±1.6 AC
Available IOS Lot (B):	±0.4 AC
Site Acreage:	±18.06 AC
Zoning:	ID (Industrial)
Clear Height:	15'
Dock High Doors:	Six (6) 10' x 10' doors
Lighting:	Newly installed LED
Power:	450 amps
HVAC:	Partially conditioned
Space Upgrades:	Available per mutually agreeable terms

LOCATION OVERVIEW

3838 Charles Raper Jonas Hwy, Stanley, NC 28164



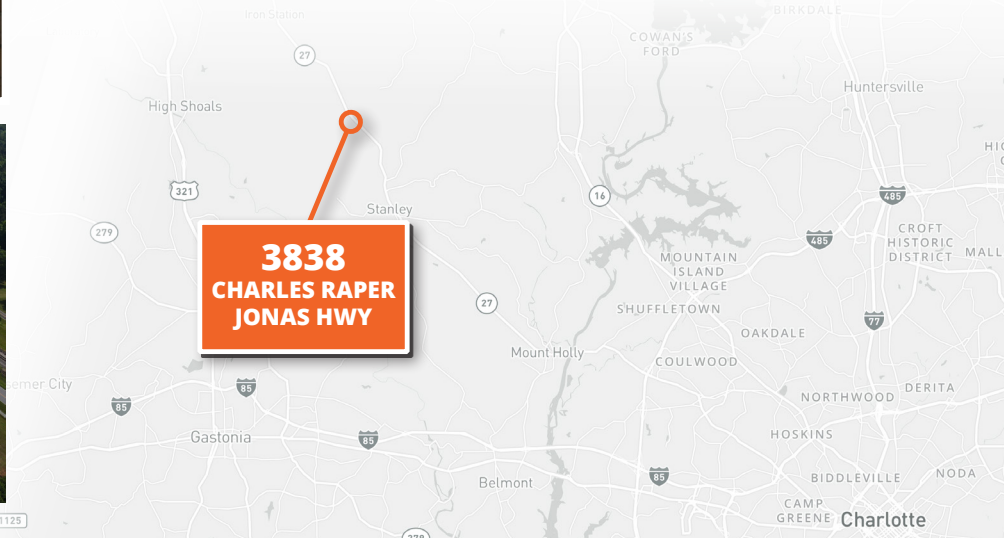
DOWNTOWN STANLEY
2.4 miles



HIGHWAY 321
7.6 miles



CHARLOTTE DOUGLAS
INTERNATIONAL AIRPORT
17.8 miles



Colin Ferguson
Vice President
704-512-0139
colin.ferguson@avisonyoung.com

Ryan Kendall
Vice President
704 612 0395
ryan.kendall@avisonyoung.com

Ian Leavitt
Associate
704 551 8354
ian.leavitt@avisonyoung.com

**AVISON
YOUNG**