

FOR LEASE

ESSIE MCINTYRE
OUTSIDE STORAGE FOR
LEASE

1775 Essie Mc Intyre Blvd, Augusta, GA 30904

Property Summary



PROPERTY DESCRIPTION

This 14.61-acre full fenced tract has gated access into the property from Government Street via 15th Street and Essie McIntyre Blvd. The majority of the property is covered with concrete and asphalt paving. Additional interior fencing and paving can be offered if necessary. This property also has the possibility of rail.

PROPERTY HIGHLIGHTS

OFFERING SUMMARY

Lease Rate:	\$1,500.00 per month (Gross)
Available SF:	1 Acres
Lot Size:	608,532 SF

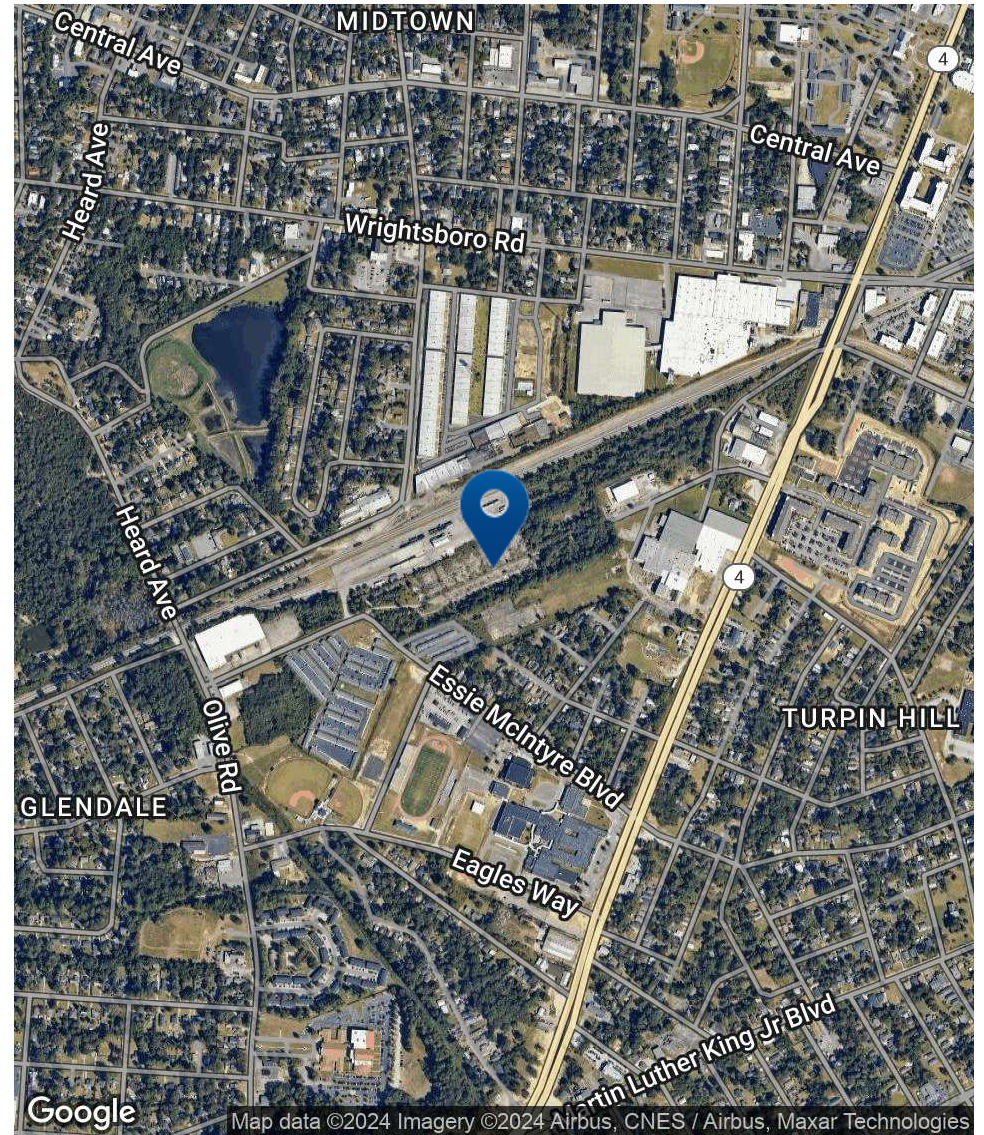
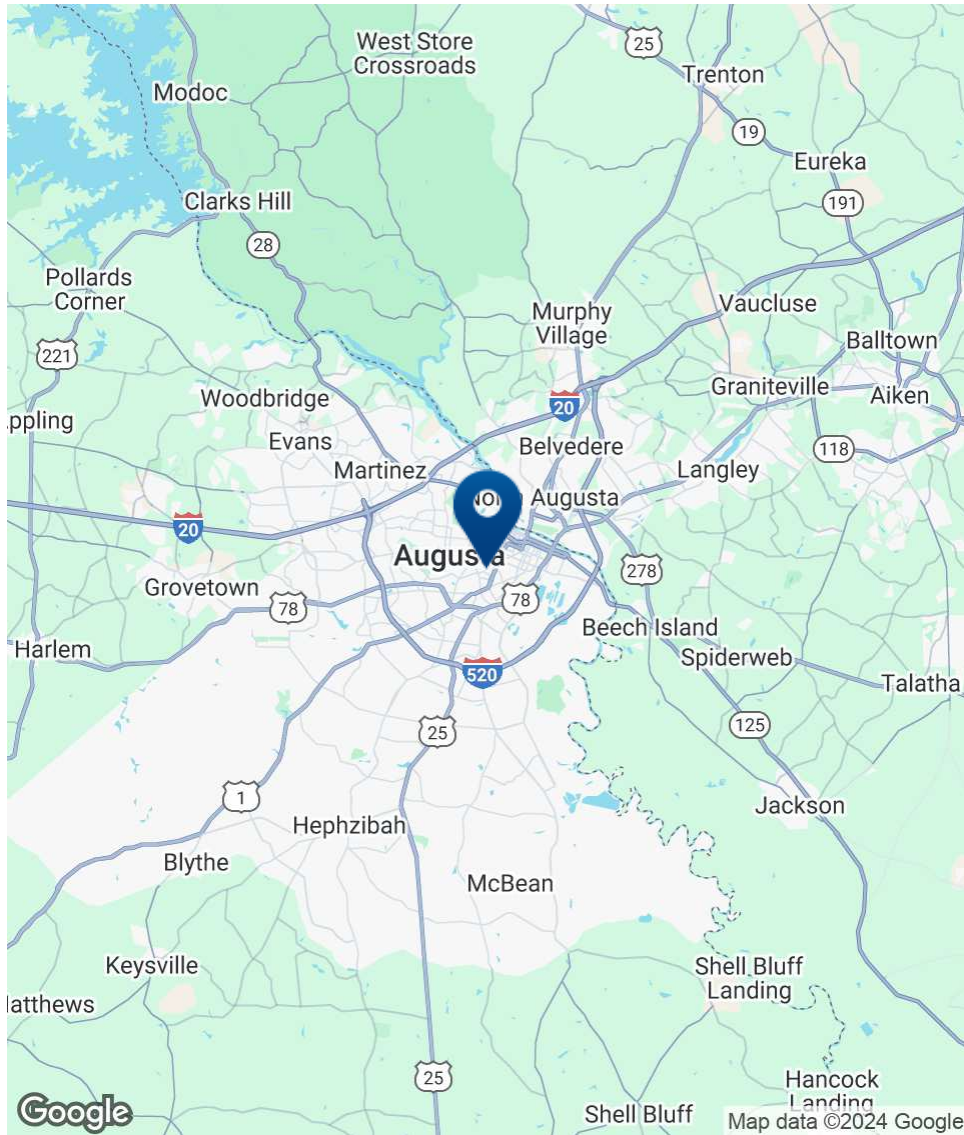
DEMOGRAPHICS

	0.3 MILES	0.5 MILES	1 MILE
Total Households	178	762	3,359
Total Population	389	1,636	8,233
Average HH Income	\$55,977	\$50,458	\$58,300



CHARLES HOCK, SIOR, CCIM
charleswhock@aol.com
706.722.8334

Location Map



CHARLES HOCK, SIOR, CCIM
charleswhock@aol.com
706.722.8334

Additional Photos



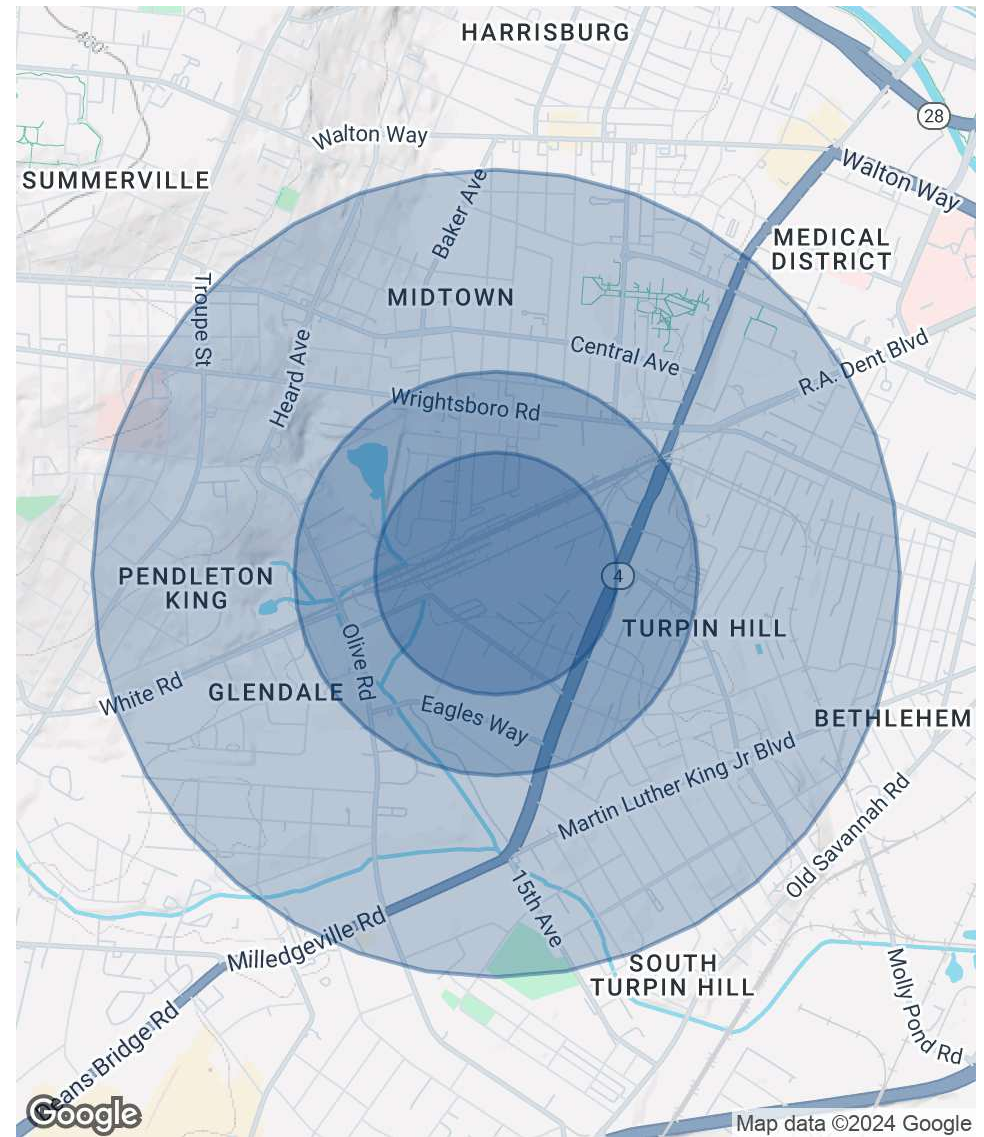
CHARLES HOCK, SIOR, CCIM
charleswhock@aol.com
706.722.8334

Demographics Map & Report

POPULATION	0.3 MILES	0.5 MILES	1 MILE
Total Population	389	1,636	8,233
Average Age	40	41	40
Average Age (Male)	38	40	39
Average Age (Female)	41	42	40

HOUSEHOLDS & INCOME	0.3 MILES	0.5 MILES	1 MILE
Total Households	178	762	3,359
# of Persons per HH	2.2	2.1	2.5
Average HH Income	\$55,977	\$50,458	\$58,300
Average House Value	\$140,813	\$130,177	\$147,659

Demographics data derived from AlphaMap



CHARLES HOCK, SIOR, CCIM
charleswhock@aol.com
706.722.8334