

RETAIL FOR LEASE

5501 - 5511 Edmondson Avenue
Baltimore, MD 21229



FALLSTAFF
REALTY



Great opportunity to become part of a neighborhood strip center anchored by Family Dollar.

- Located at a signalized intersection
- Surrounded by dense residential with strong income levels
- Ample parking
- Great co-tenancy with Family Dollar, Today's Pizza and Precious Ones Learning & Outreach Center
- Just 1 mile off I-695 (Exit 14)

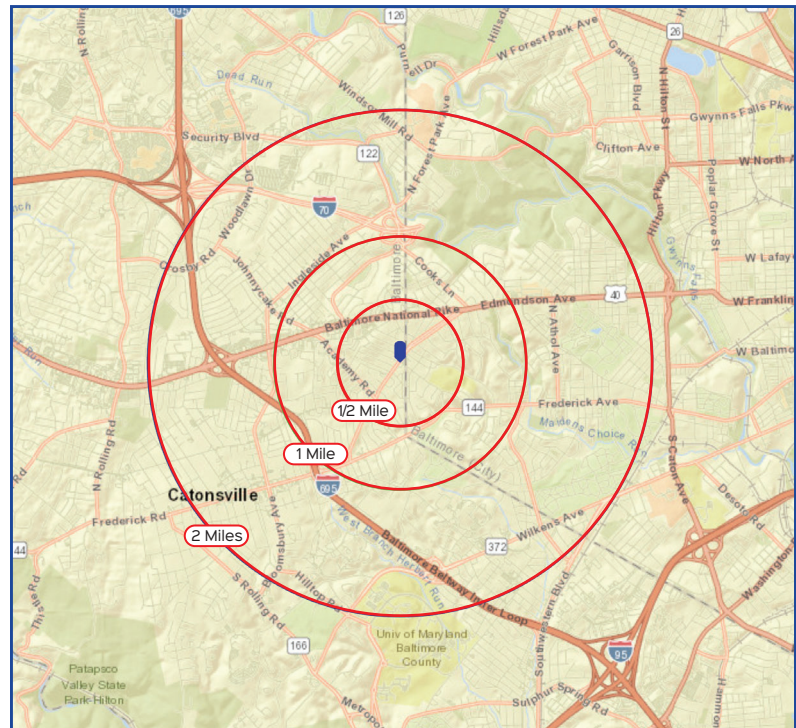
Available Size: 1,250 - 5,000 +/- square feet

Rent: \$13.00 - \$20.00 p.s.f, NNN

Traffic Counts: 8,921 AADT on Edmondson Avenue

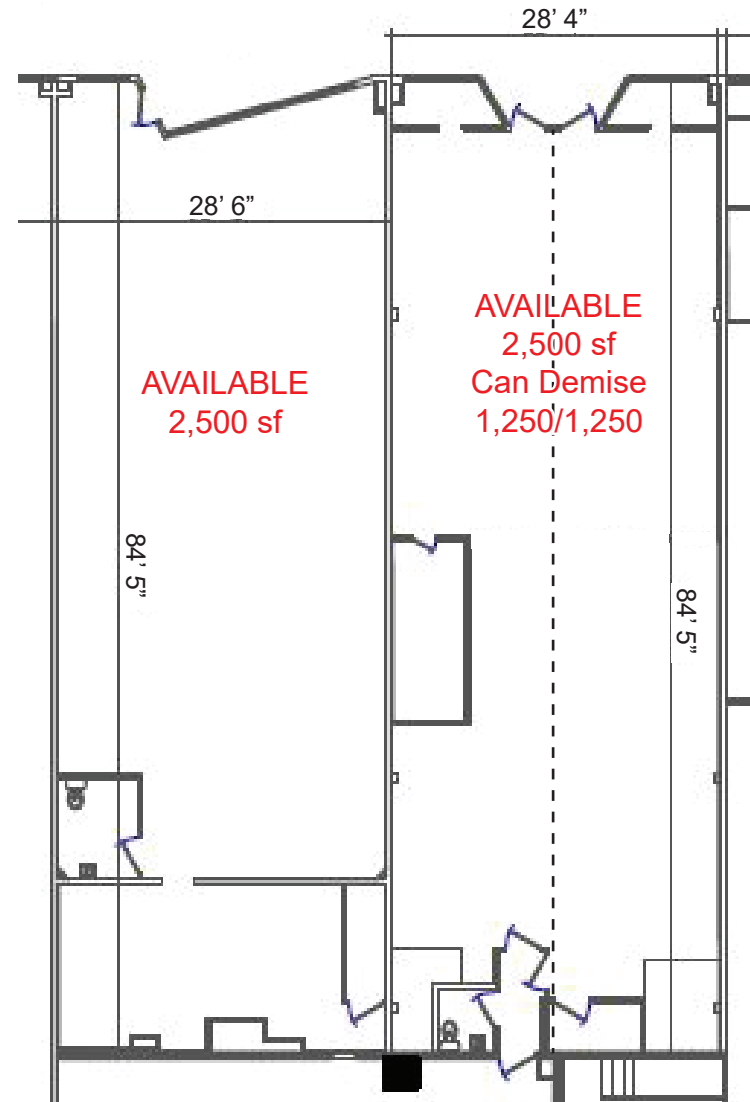
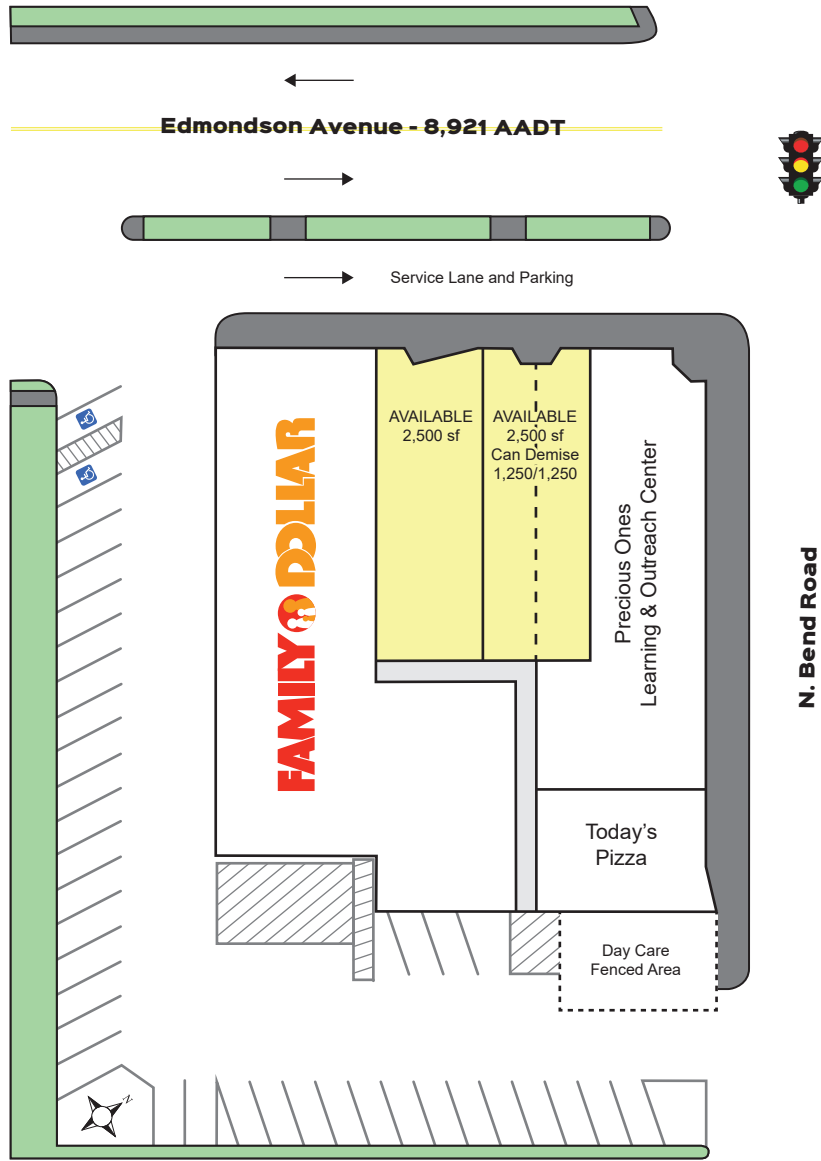
Demographics (2020 estimates):

	1/2 Mile	1 Mile	2 Miles
Population	6,297	23,972	77,512
Households	2,613	10,045	30,724
Avg. HH Income	\$92,670	\$85,126	\$78,251



RETAIL FOR LEASE

5501 - 5511 Edmondson Avenue
Baltimore, MD 21229



RETAIL FOR LEASE

5501 - 5511 Edmondson Avenue
Baltimore, MD 21229

