



For Lease

6465 College Park Square
Virginia Beach, VA

Ricky Anderson

Executive Vice President
+1 757 217 1892
ricky.anderson@colliers.com

Drew Ott

Associate
+1 757 228 1826
drew.ott@colliers.com

150 West Main Street
Suite 1100
Norfolk, VA 23510
P: +1 757 490 3300

Features

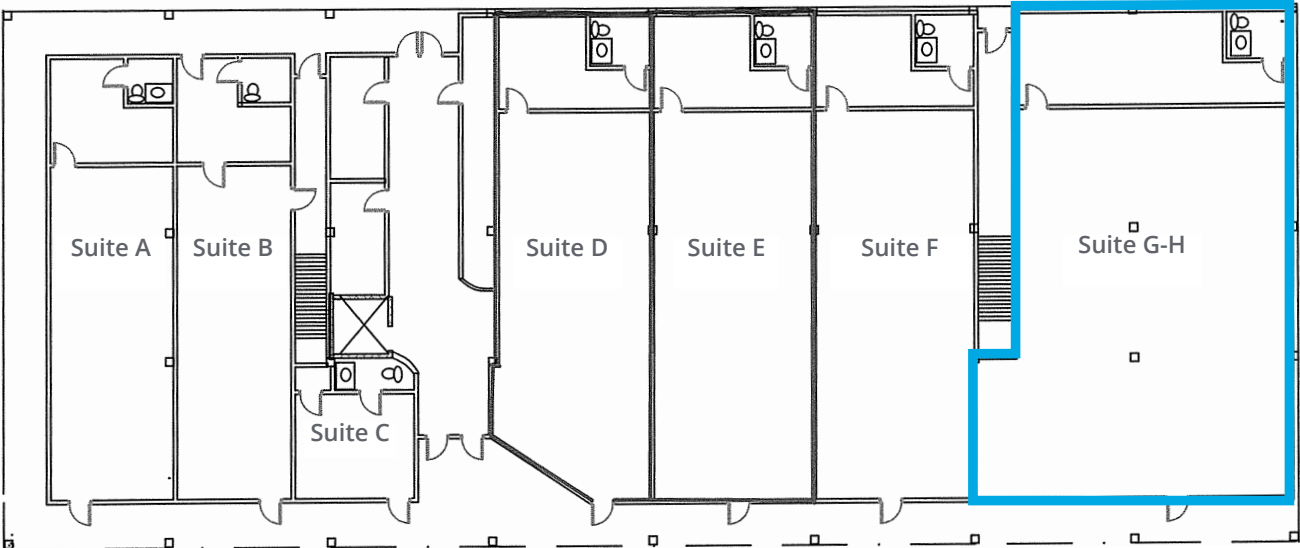
- Four-story, ± 30,892 SF building
- Suites available from ± 525 SF up to ± 4,234 SF
- First floor retail spaces with direct access available
- 145 parking spaces on site (4.6/1,000 RSF)
- Under new ownership and management
- Conveniently located between Greenbrier and Military Circle with easy access to I-64 (1 mi) and I-264 (2.5 mi)
- Lease Rate:
 - 1st Floor Retail: \$15.00 PSF, NNN (estimated \$3.90 triple nets)
 - 2nd & 4th Floor Office: \$15.50 PSF, Net of Janitorial



Available Space

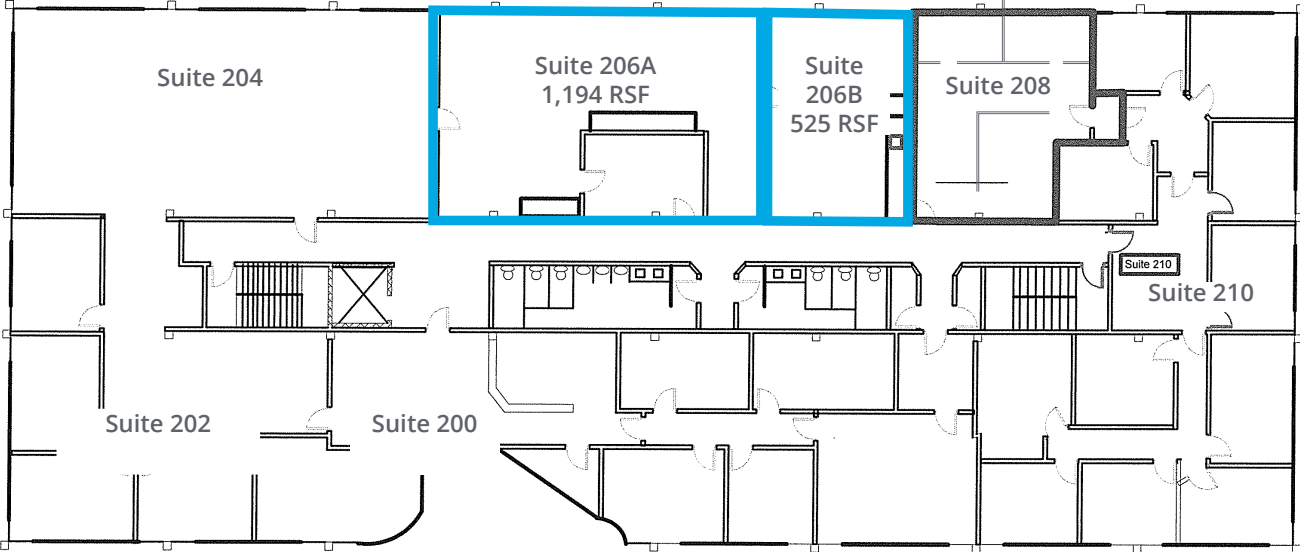
1st Floor

Suite G-H: 2,278 SF



2nd Floor

Suite 206: 525 RSF up to 1,719 RSF

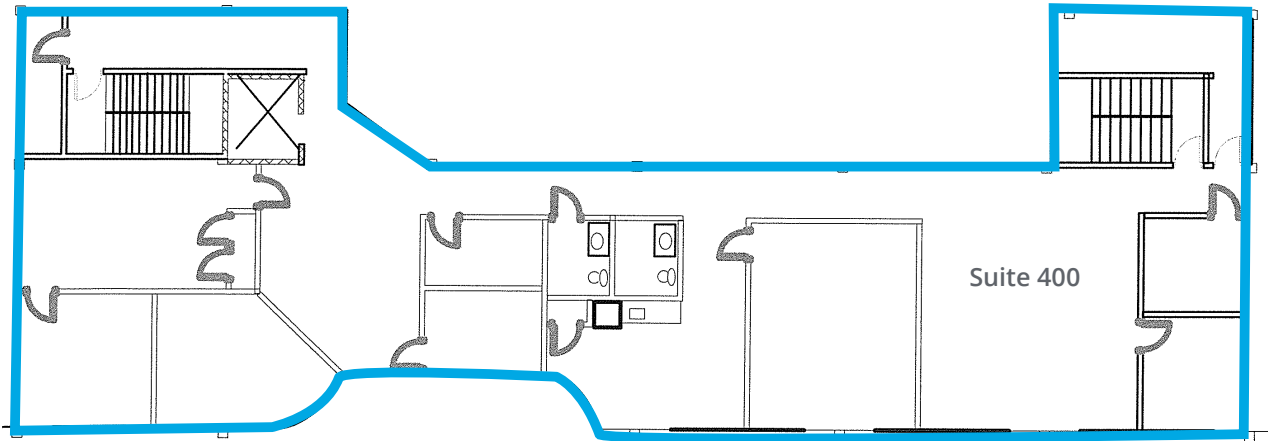


Available Space

Available Space

4th Floor

Suite 400: 4,234 SF



Available Space



Military Circle Mall

6465 College Park Square

Greenbrier Mall



150 West Main Street
Suite 1100
Norfolk, VA 23510
P: +1 757 490 3300

Ricky Anderson
Executive Vice President
+1 757 217 1892
ricky.anderson@colliers.com

Drew Ott
Associate
+1 757 228 1826
drew.ott@colliers.com

This document has been prepared by Colliers International for advertising and general information only. Colliers International makes no guarantees, representations or warranties of any kind, expressed or implied, regarding the information including, but not limited to, warranties of content, accuracy and reliability. Any interested party should undertake their own inquiries as to the accuracy of the information. Colliers International excludes unequivocally all inferred or implied terms, conditions and warranties arising out of this document and excludes all liability for loss and damages arising there from. This publication is the copyrighted property of Colliers International and/or its licensor(s). ©2024. All rights reserved.