

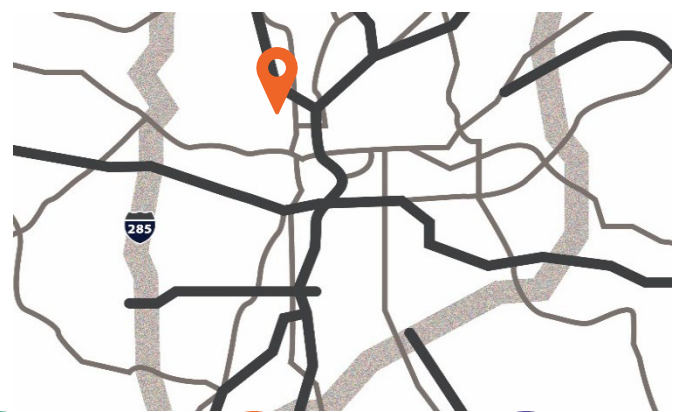


3000 Pacific Drive, Norcross, GA 30071

Opportunity

- 43,250 sf available
- 3,801 sf of showroom/office
- 43,250 total building size
- 22'8" clear height
- 40' x 39' bay size
- 1 (9'x10') Grade Level DI, 8 (8'x10') DH
- 151' Building Depth
- Sprinkler System

Location



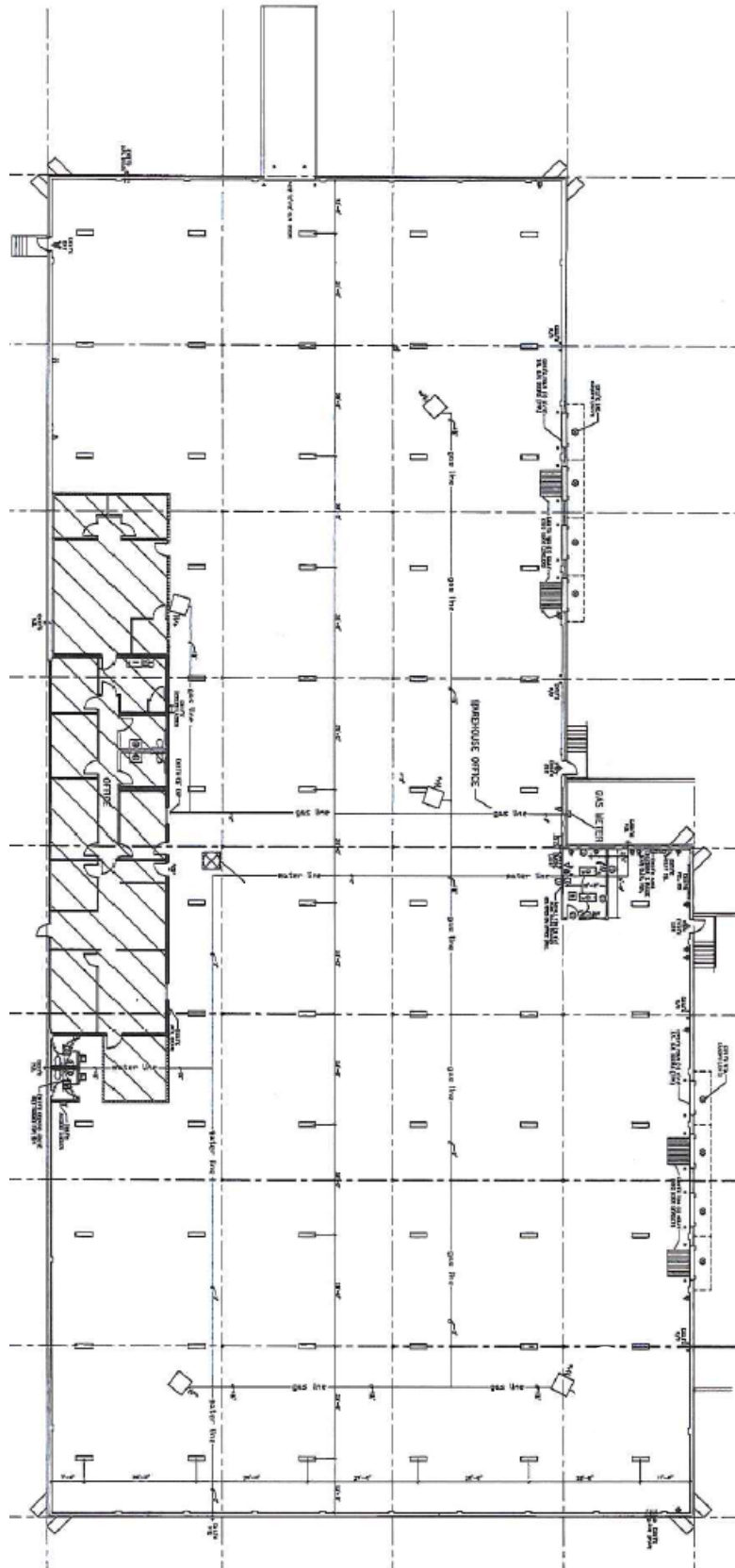
For further information

Ben Parker, SIOR
ben.parker@avisonyoung.com
+1 404 409 5678

Benjamin Yim
benjamin.yim@avisonyoung.com
+1 678 777 0275

Industrial For Lease

3000 Pacific Drive, Norcross, GA



For further information

Owned by:



Ben Parker, SIOR
ben.parker@avisonyoung.com
+1 404 409 5678

Benjamin Yim
benjamin.yim@avisonyoung.com
+1 678 777 0275

