



**EXPANSIVE**<sup>®</sup>  
w o r k s p a c e

---

Dana Goncalves 321-204-1191  
expansive.com | (877) 301-6217



# Why Expansive?

At Expansive, we own the buildings we develop and operate. This allows us to share the incomparable advantages of a fully-integrated, nationwide property owner with our clients, including our four cornerstones of workspace success:

## Vibrant Inclusivity

To foster community and build relationships

## Unparalleled Flexibility

To realize your vision even as it evolves

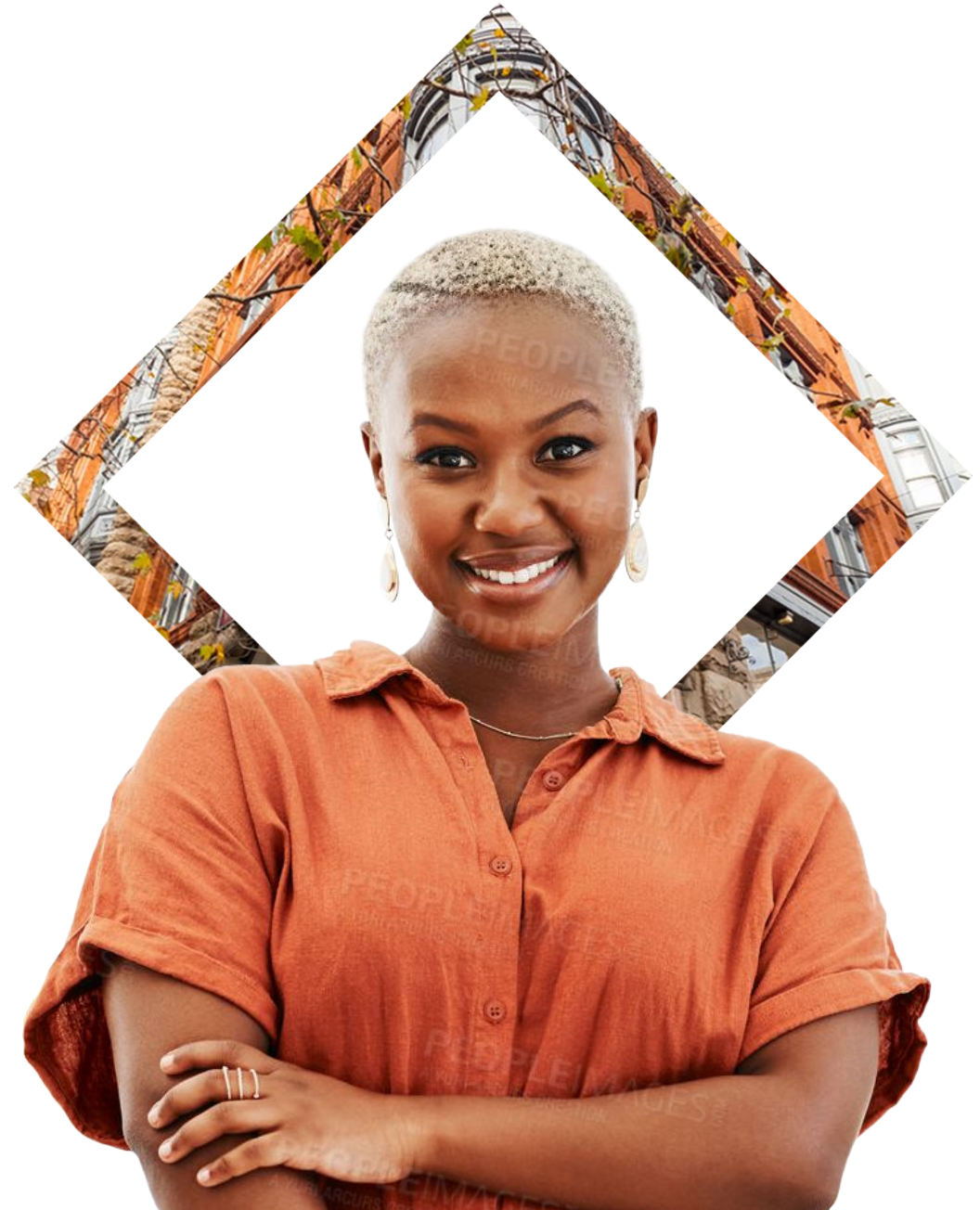
## Maximum Stability

To establish confidence in an uncertain world

## Comprehensive Value

To drive cost efficiencies and trust

## Enterprise Clients We Serve



# Expansive Workspace Angebilt Building

37 N. Orange Ave., Orlando, FL

Once the tallest building in Orlando and home to the city's finest hotel, the historic Angebilt Building has been a local landmark ever since its opening in 1923. Now converted into an office building, the Angebilt Building features executive suites, private offices, office space for lease, and virtual offices in Orlando with state-of-the-art technology and amenities. This elegant red-brick building offers entrepreneurs, small businesses, and enterprise companies a prestigious base at the heart of the Central Business District. Read on to see the highlights and benefits of our prime office space in Orlando.

## Shared Amenities

### 3 Conference Rooms

- [1] 2nd Floor
- [1] 3rd Floor
- [1] 8th Floor

### 10 Phone Booths

- [3] 2nd Floor
- [4] 3rd Floor
- [3] 8th Floor

### 1 Expansive Lounge

- Located on 2nd<sup>h</sup> Floor



# Center Photos



[Check Out Our Community!](#)



# Proposed Solution

## Suite 400C

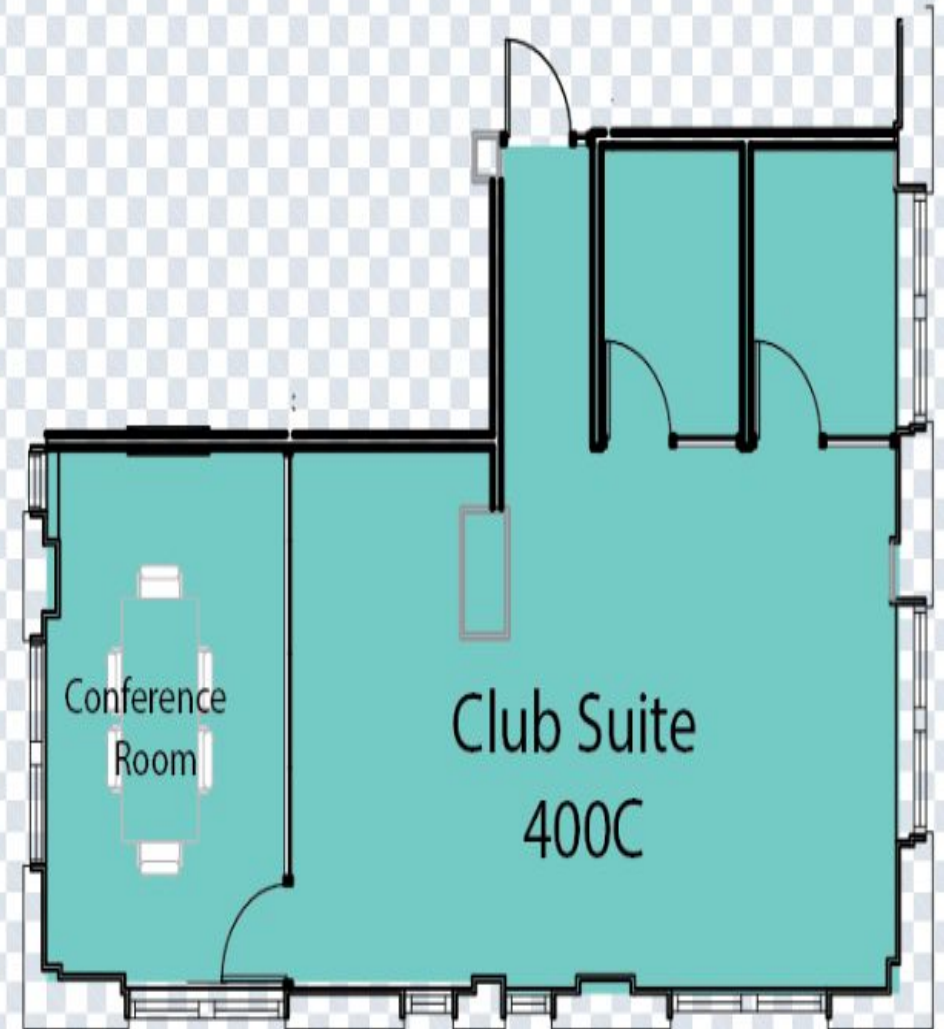
### Layout Breakdowns

**16** Workstations

**1** Conference Room  
• [1] 8-person

**2** Private Office  
Space

- Keyless Entry
- Smart TV With Google Chromecast



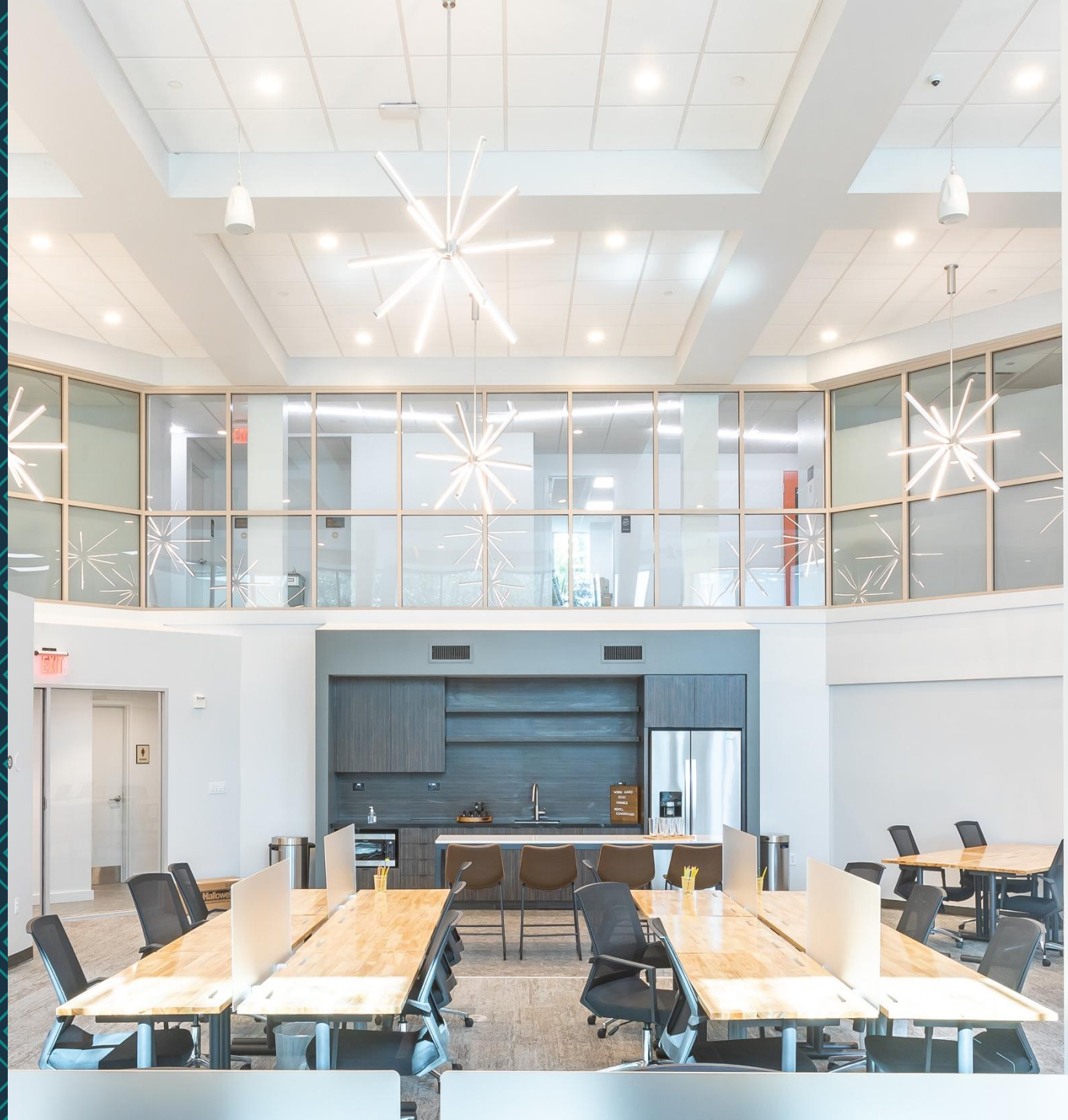
# All-Inclusive Pricing

## 400C | 1,142 Square Feet

- Accommodates up to 16 workstations
- 12 month agreement- \$5,389
- 24 month agreement-\$4,850 per month with one free promo month
- 36 month agreement-\$4,850 per month with 2 free promo months

### Suite agreement process:

- First months rent
- Retainer – equals one months rent
- One time Setup fee - \$750



# Expansive ClubSuite® Membership Includes:

- 24/7 secure building access with keyless entry
- Business mailing address
- Furnished with as many desks and chairs as needed
- WiFi
- Dedicated Meeting room with Smart TV
- Company logo on Suite Door, as well as member directory listing on Expansive App
- On-site management
- Access to Expansive amenities, including:
  - Mothers room
  - Balcony patio
  - Community App
  - Meeting and event facilities
  - Mail & package receipt services
  - Community lounge area with unlimited espresso, coffee and tea
  - Community networking events



# Special Event Amenities

Available Across the  
Expansive Network

Impress your team and clients!

- Networking Events
- Company Conference
- First floor, lobby areas
- Recruiting Fair
- Team Retreats

 Visit [expansivevenues.com](https://expansivevenues.com)  
to See Location and Venue Details





# Your Membership Includes Access to All Locations

34

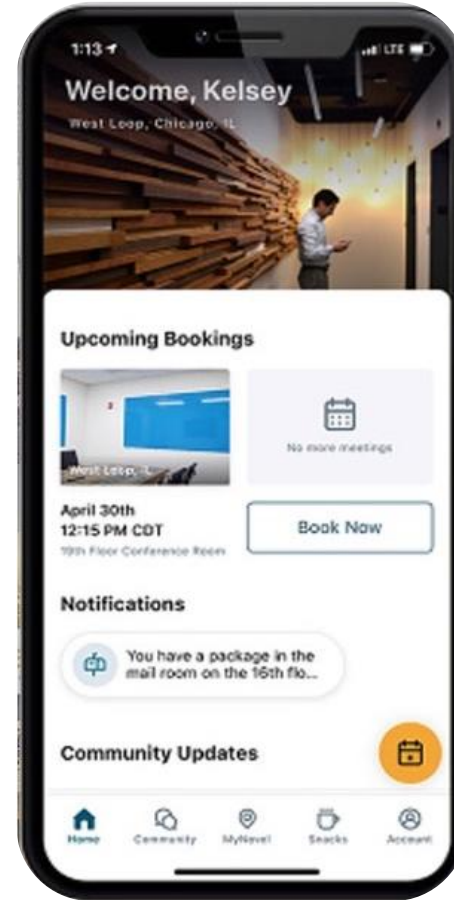
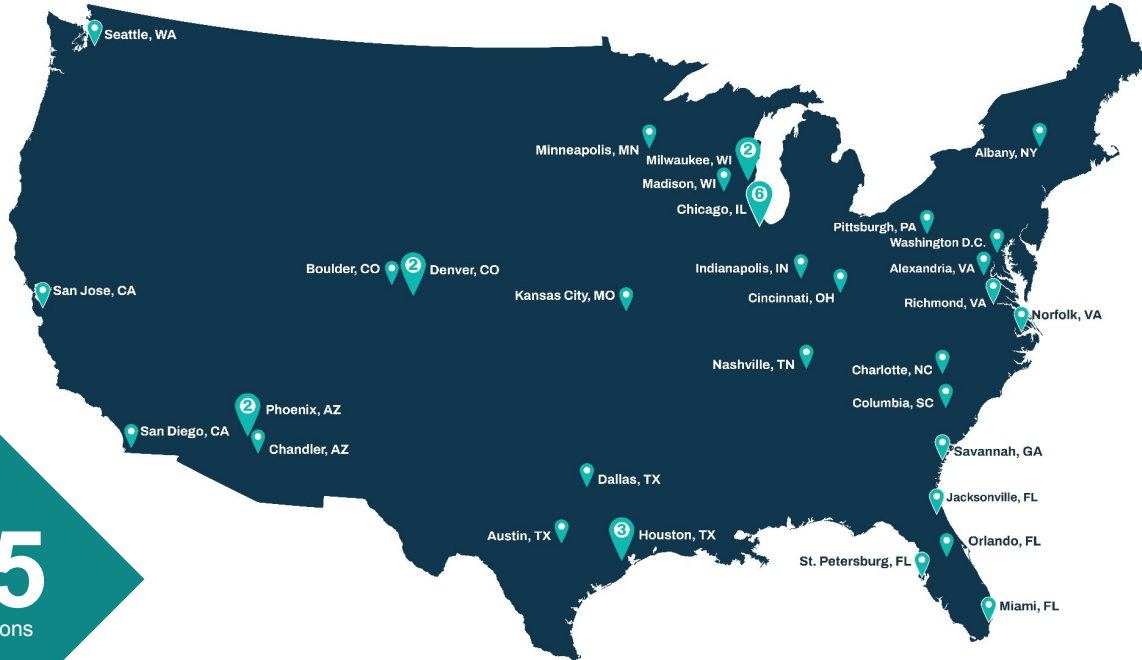
Cities

3.8M

SF

45

Locations



Seattle, WA



Cincinnati, OH



Denver, CO



Minneapolis, MN

# What Happens Next

We invite you to proceed in two simple steps.

## 1 Choose your solution

Act now to avoid disappointment. We operate on a first-come, first-served basis.

## 2 Easy online sign up

Once you have chosen your preference option, we will send you a one page agreement which is just one click to sign.

Further questions? Please contact us if we haven't given you the right solution here. Talk to us. Other options are available.

Email: [info@expansive.com](mailto:info@expansive.com) or call **877.301.6217**

