

2655

Camino Del Rio N
San Diego, CA 92108

For Lease
Mission Valley



4350 La Jolla Village Drive, Suite 500
San Diego, CA 92122
+1 858 455 1515
www.colliers.com

Derek Applbaum
Senior Vice President
Lic. No. 01280412
+1 619 851 2628
derek.applbaum@colliers.com

Building Features | Amenities



Move-in Ready Spec Suite

* Expansive Dual Windowline
Offering Abundant Natural Light
& Direct Access to Courtyard



TOUR
COURTYARD



Abundant Parking: Over 6.0 / per 1000 SF



On-site Management



Newly Remodeled Courtyard, Furnishings & Restrooms



Close Proximity to Public Transportation



Easy Access to I-8, I-805, I-15 and Hwy 163



Office Lease Rate \$2.60/SF + Electric



Exterior

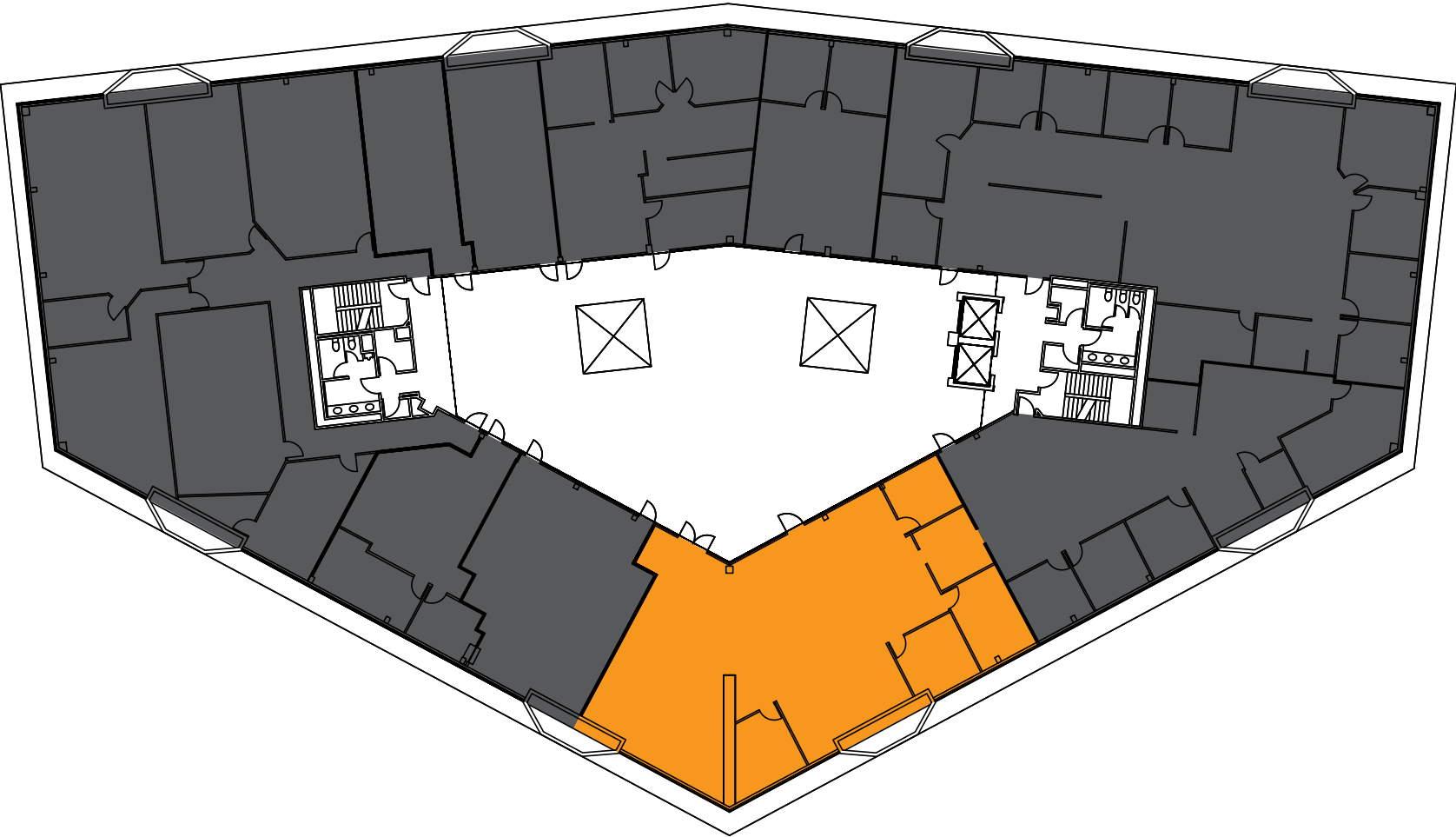
Easy Access




Abundant Parking

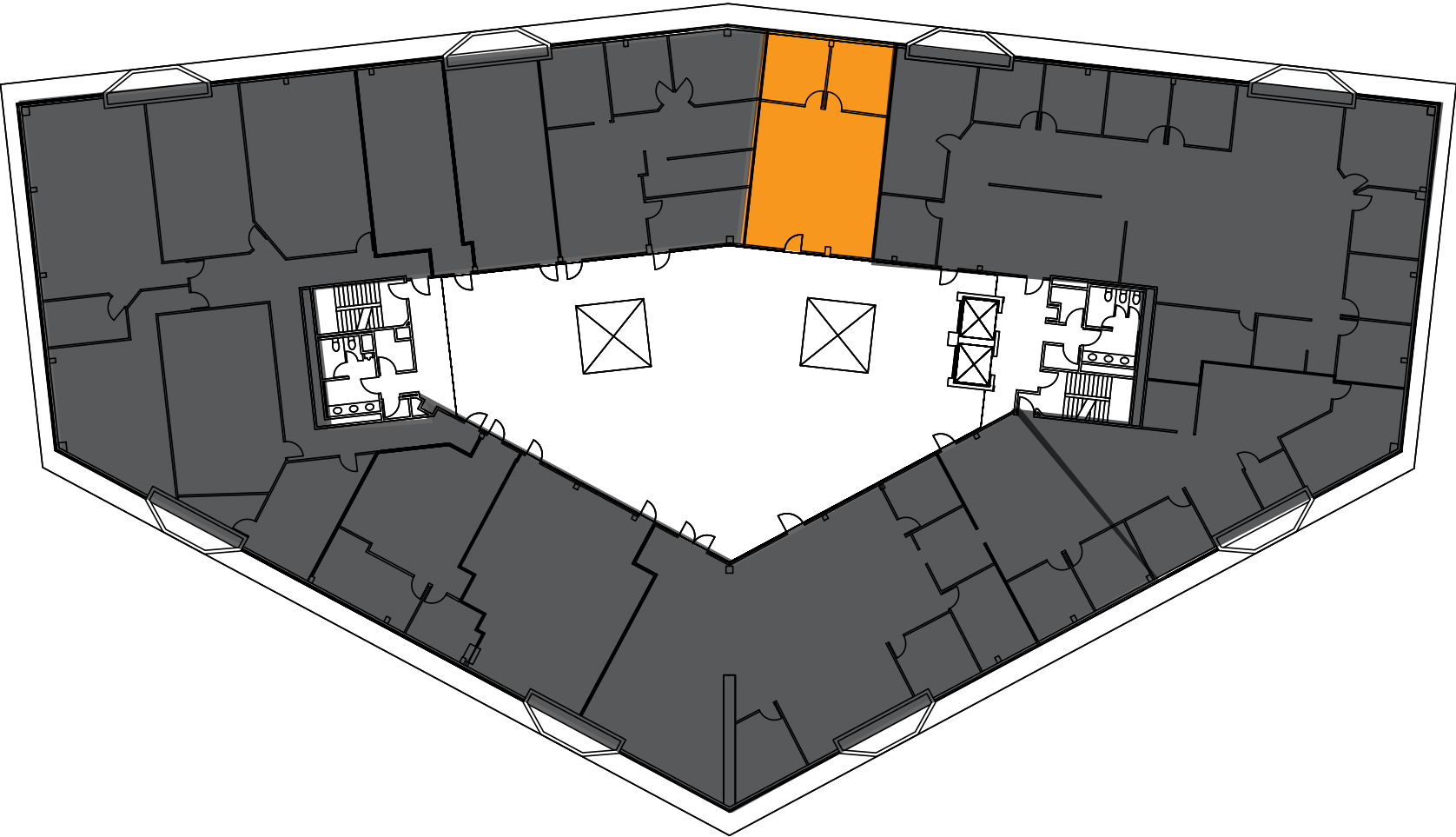
Availabilities

SUITE	RSF	RATE	AVAILABLE	COMMENTS
203	3,606	\$2.60 + E	11/1/2025	Reception, 4 offices, break room and open area



Availabilities

SUITE	RSF	RATE	AVAILABLE	COMMENTS	
210	1,120	\$2.60 + E	Now	Move-in ready suite featuring reception, two window-line offices with direct access to courtyard.	





MISSION VALLEY



Interstate 8
3 min.



State Route 163
9 min.



Interstate 805
5 min.



Interstate 15
6 min.



Fashion Valley Mall
7 min.



Mission Valley Mall
3 min.



San Diego Airport
16 min.

2655

Camino Del Rio N
San Diego, CA 92108

For Lease
Mission Valley

Colliers

4350 La Jolla Village Drive, Suite 500
San Diego, CA 92122
+1 858 455 1515
www.colliers.com

Derek Applbaum
Senior Vice President
Lic. No. 01280412
+1 619 851 2628

derek.applbaum@colliers.com

©2023 Colliers International. Information herein has been obtained from sources deemed reliable, however its accuracy cannot be guaranteed. The user is required to conduct their own due diligence and verification