

FOR SALE
10,500 SF | OFFICE, WAREHOUSE FACILITY
382 PONDELLA ROAD, NORTH FORT MYERS, FL 33903



PROPERTY HIGHLIGHTS

BUILDING SIZE: 10,500 SF
LAND SIZE: 2.56 Acres
SALE PRICE: Call for Price



PROPERTY FEATURES

- 6,788 SF Column-Free Warehouse
- 2,125 SF Office
- 1,587 SF Showroom Area
- 18 Loading Doors
 - 16 Box Truck-High Doors
 - 2 (48") Dock-High Doors
 - 1 Ramped Drive-In Door
 - 1 Drive-In Door to Showroom
- 14' - 16' Clear Height
- 31 Parking Spaces
- Built in 2015
- Zoned CG
- Fenced Lot

Derek Bornhorst, SIOR, CCIM
Principal
239.210.7607
dbornhorst@lee-associates.com

Jessica Mizrahi, SIOR
Principal
813.804.0886
jmizrahi@lee-associates.com

Jackson O'Neill
Director
412.208.5869
joneill@lee-associates.com

Adam Bornhorst
Vice President
239.210.7616
abornhorst@lee-associates.com

All information furnished regarding property for sale, rental or financing is from sources deemed reliable, but no warranty or representation is made to the accuracy thereof and same is submitted to errors, omissions, change of price, rental or other conditions prior to sale, lease or financing or withdrawal without notice. No liability of any kind is to be imposed on the broker herein.

FOR SALE
10,500 SF | OFFICE, WAREHOUSE FACILITY
382 PONDELLA ROAD, NORTH FORT MYERS, FL 33903

PROPERTY PHOTOS

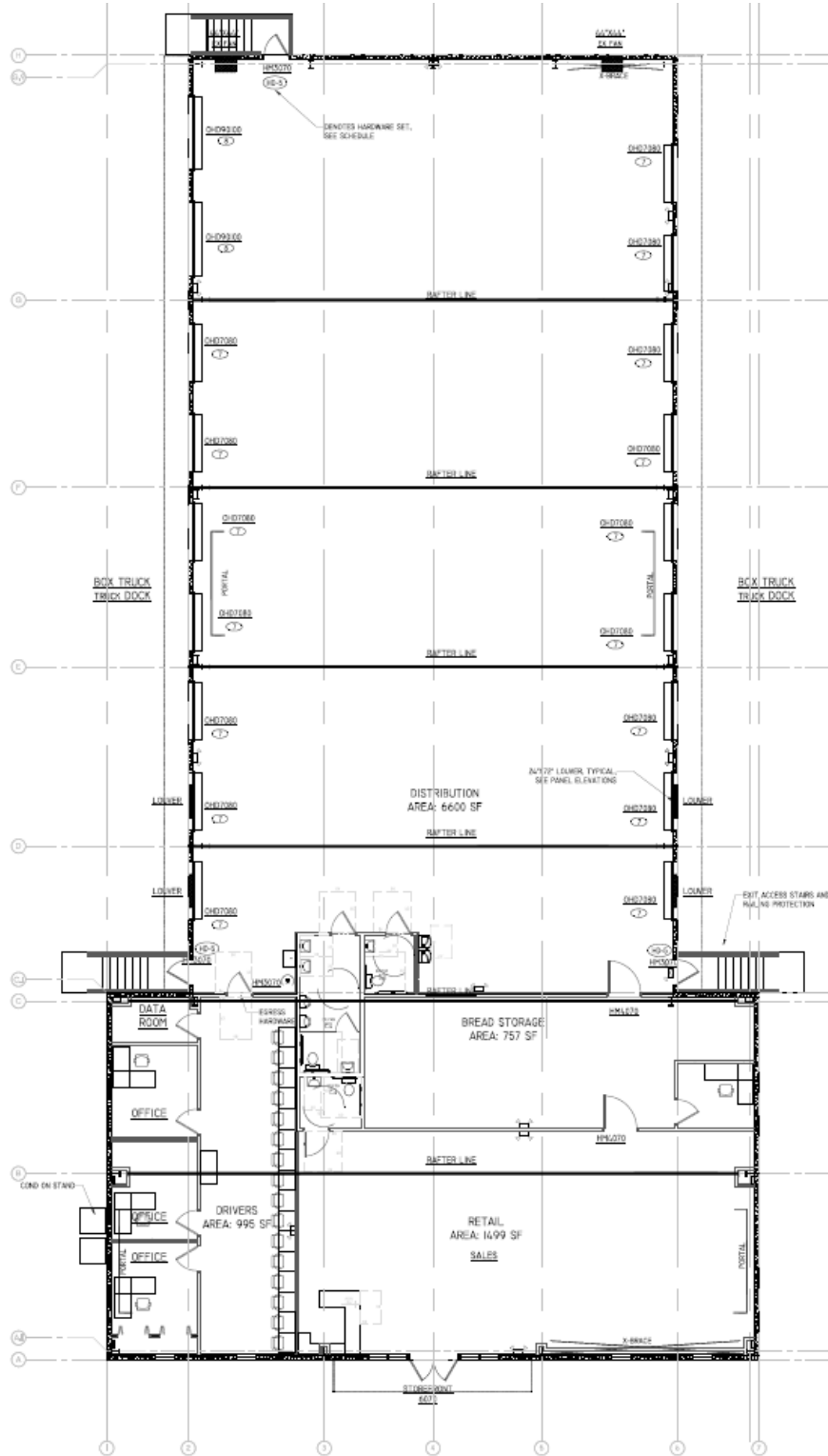


FOR SALE

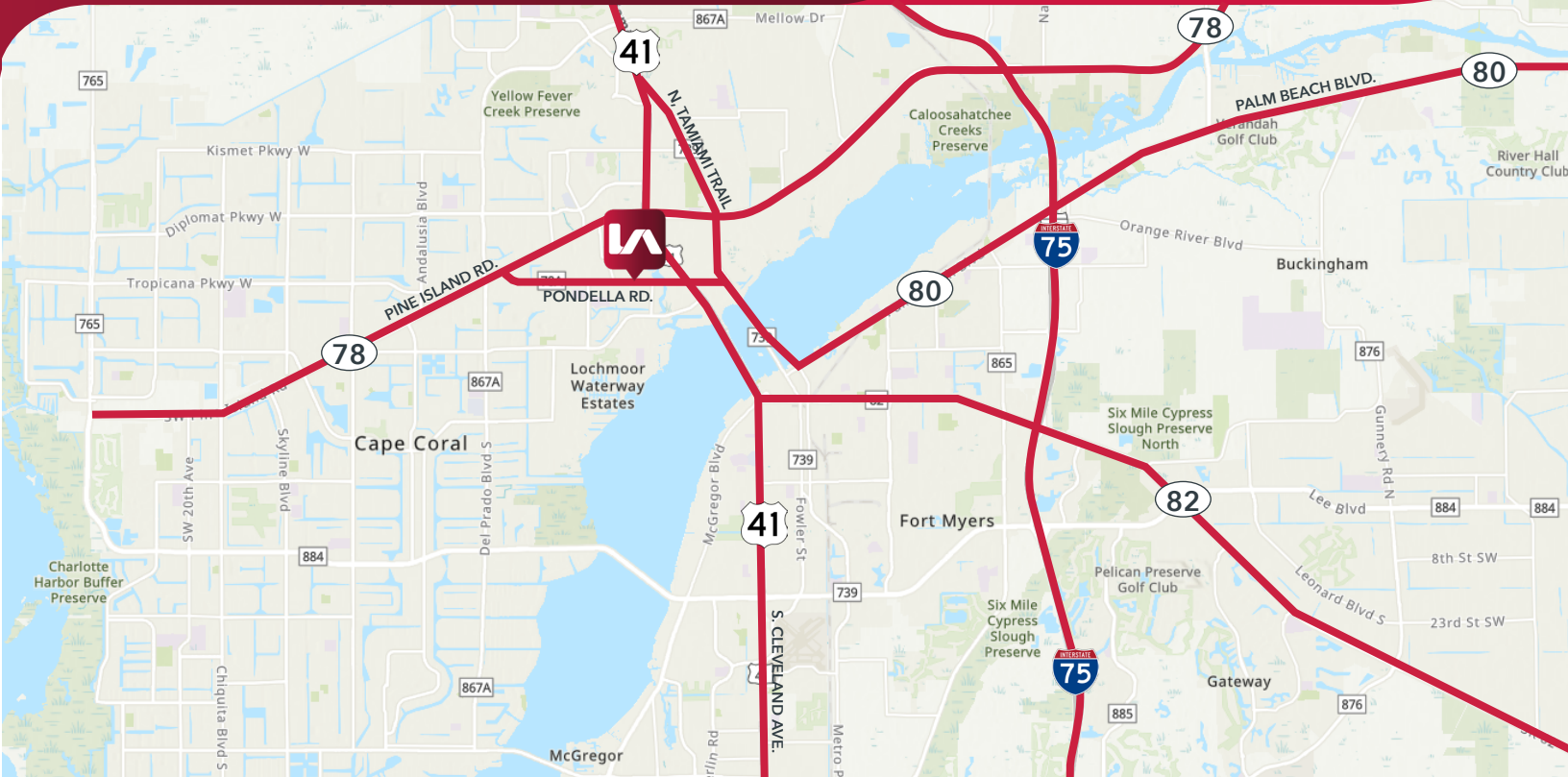
10,500 SF | OFFICE, WAREHOUSE FACILITY

382 PONDELLA ROAD, NORTH FORT MYERS, FL 33903

FLOOR PLAN



FOR SALE
10,500 SF | OFFICE, WAREHOUSE FACILITY
382 PONDELLA ROAD, NORTH FORT MYERS, FL 33903



DISTANCES

US HWY 41: 0.3 Miles

I-75: 6.5 Miles

SW FL INT'L

AIRPORT: 14 Miles

NAPLES: 32 Miles

SARASOTA: 63 Miles



Derek Bornhorst, SIOR, CCIM
 Principal
 239.210.7607
 dbornhorst@lee-associates.com

Jessica Mizrahi, SIOR
 Principal
 813.804.0886
 jmizrahi@lee-associates.com

Jackson O'Neill
 Director
 412.208.5869
 joneill@lee-associates.com

Adam Bornhorst
 Vice President
 239.210.7616
 abornhorst@lee-associates.com