



FOR LEASE

32,500 SF FLEX SPACE

598 Lucas Lane • Ellsworth, WI



DESCRIPTION

Former retail building in the Crossing Meadows Business Park. Mostly open space with a small office build-out and three restrooms. Two loading docks and two drive-in doors to accommodate a wide variety of uses.

HIGHLIGHTS

- Available Immediately
- 19 Miles To Interstate 94
- 1 Mile from Ellsworth Country Club & Less Than 2 Miles To Local Restaurants
- Village of Ellsworth Is Known As The Cheese Curd Capital of Wisconsin, 2.5 Miles From Ellsworth Cooperative Creamery

PROPERTY DETAILS

- Parcel Size: 3.92 Acres
- 32,500 SF Building
- 2 Dock Doors: Easy Access
- 2 Drive-In Doors
- Utilities: Public Water & Sewer
- Interior Well-Lit
- 208V Electrical Service
- Large Parking Lot - 160 spaces
- Year Built: 2008
- Frontage: 302 ft on W. Lucas Ln.
- Full Fire Suppression System

FOR MORE INFORMATION CONTACT:

NICK COLIANNI | +1 715.716.6968
nick.colianni@gallantpds.com



The information contained herein was obtained from sources deemed to be reliable and is believed to be true; it has not been verified and as such, Gallant Property and Development Services does not represent, warrant or guarantee the accuracy, correctness and completeness of the information.

Brokered by Esquire Realty Group, LTD

PROPERTY IMAGES



Front Entrance



Interior View



Western Facing Loading Dock and Drive In Doors



Loading Docks



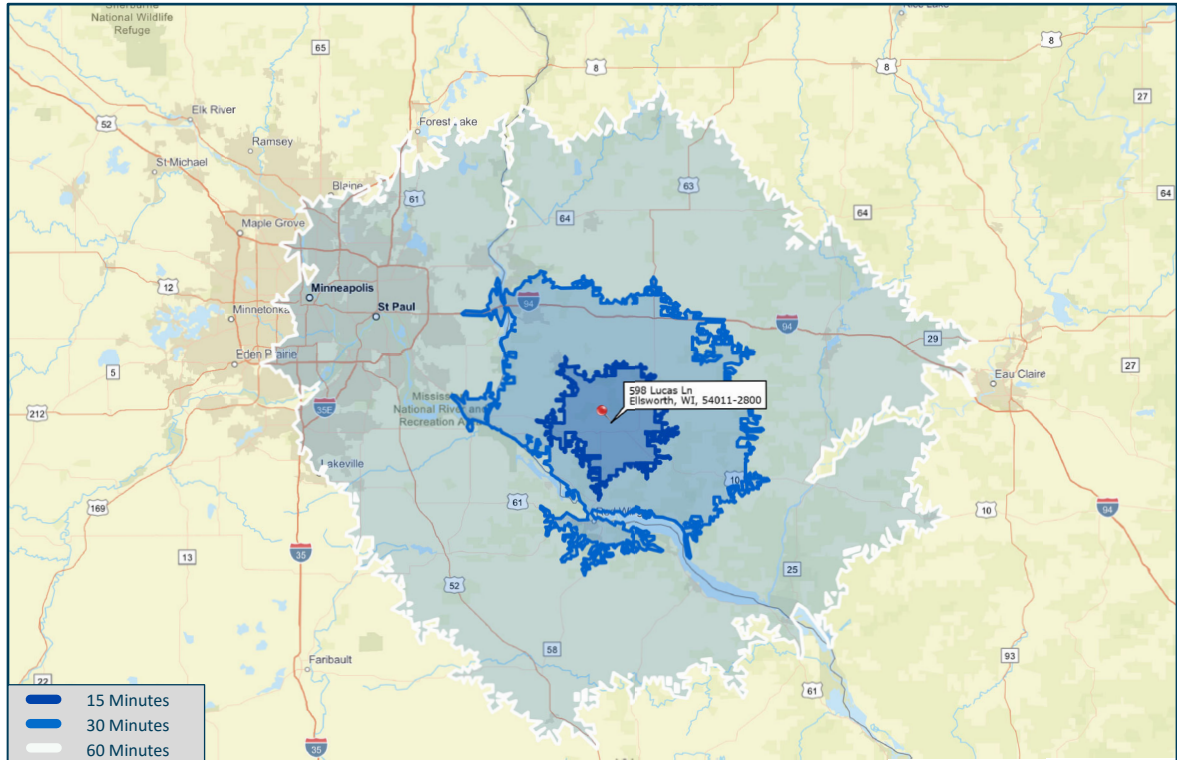
Interior Storage



Drive Thru Facing Hwy 65

MARKET AERIAL VIEWS

DRIVE TIME MAP



LOCATION MAP



FOR MORE INFORMATION CONTACT:

NICK COLIANNI | +1 715.716.6968
nick.colianni@gallantpds.com



The information contained herein was obtained from sources deemed to be reliable and is believed to be true; it has not been verified and as such, Gallant Property and Development Services does not represent, warrant or guarantee the accuracy, correctness and completeness of the information.

Brokered by Esquire Realty Group, LTD



Nick Colianni
+1 715.716.6968
Nick.Colianni@gallantpds.com