

28,650 SF BUILDING FOR SALE



NEW PRICE REDUCTION!

1835 ENERGY PARK DR

ST PAUL, MINNESOTA



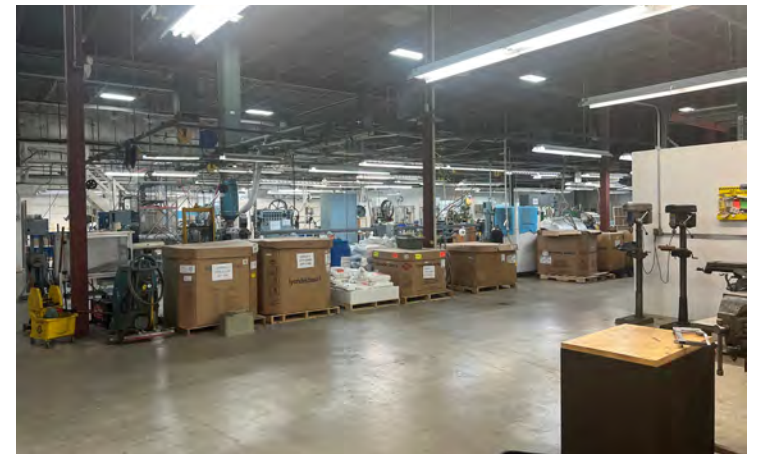
1835 ENERGY PARK DR ST PAUL, MN

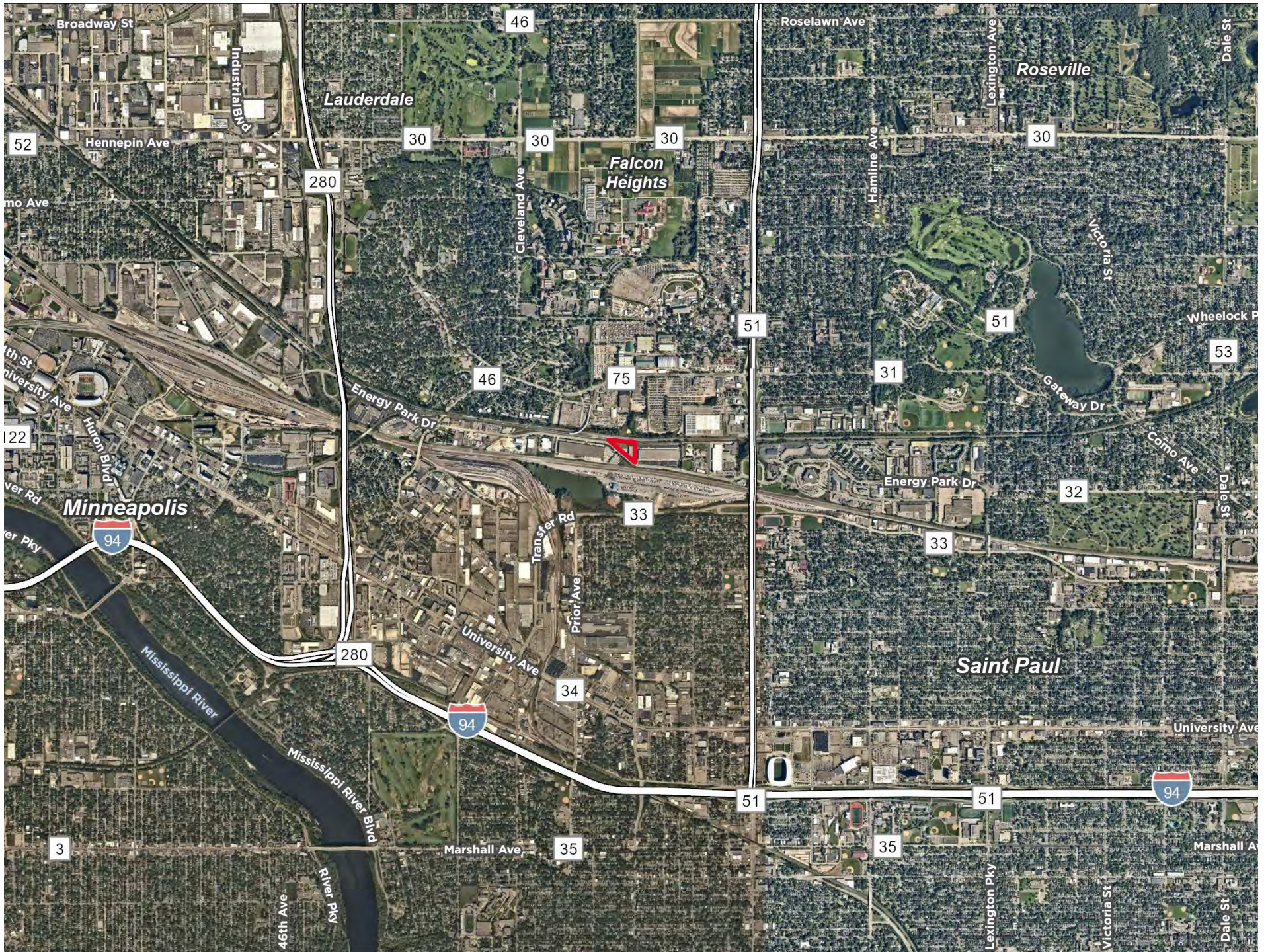
PROPERTY HIGHLIGHTS

Sale Price:	\$3,724,500 (\$130 PSF) \$3,400,000 (\$118.76 PSF)
Building Size:	8,493 SF First Floor Office 4,250 SF Second Floor Office 15,907 SF Warehouse 28,650 SF Total
Clear Height:	22'
Loading:	1 Dock 1 Drive-in
Year Built:	1987
Roof:	2007
Power:	120/208V with an additional 480V step-up 800 Amps
Sprinkler:	Fully Sprinkled
Acres:	2.98 Acres
Parking:	30 Stalls
Zoning:	I-1, Light industrial
2024 Taxes:	\$100,670



1835 ENERGY PARK DR ST PAUL, MN







CONTACT INFORMATION

Danny McNamara
Senior Director
+1 952 893 8895
danny.mcnamara@cushwake.com

Kris Smeltzer
Executive Managing Director
+1 952 837 8575
kris.smeltzer@cushwake.com

3500 American Blvd W Suite 200
Minneapolis, MN 55431
cushmanwakefield.com

