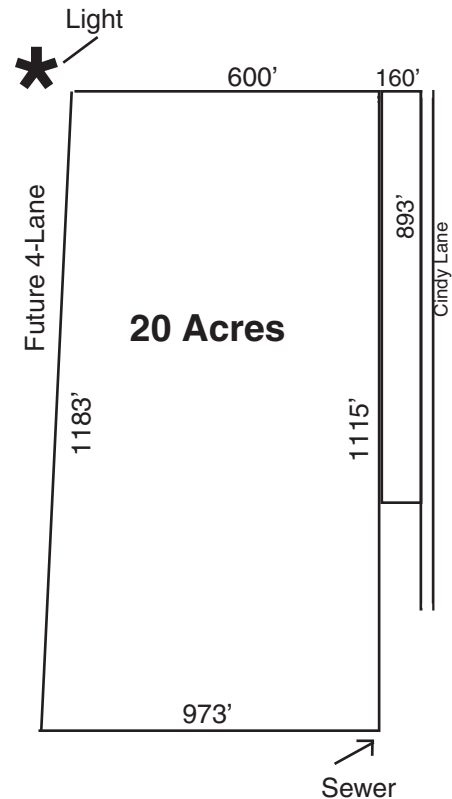
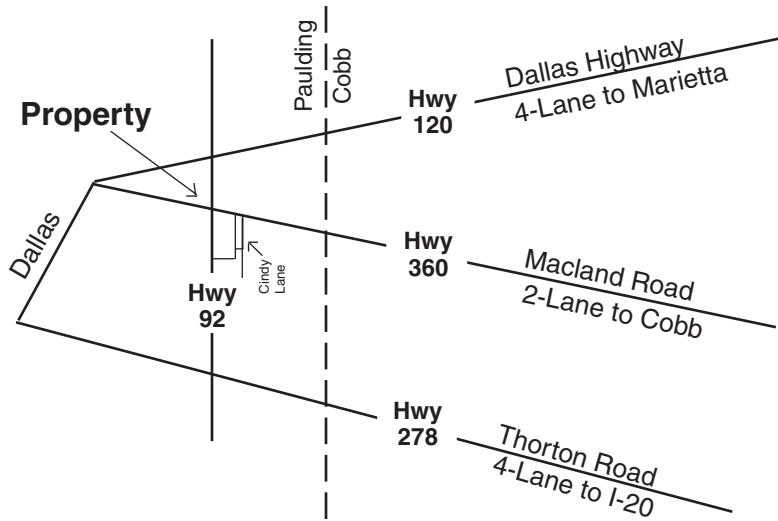


Prime Location 20+ - Acres Hwy 92 and Hwy 360



**Just 1 Mile North of Hiram
Hwy 360 is The Major 2-lane artery
from Cobb into Paulding**

- **20 Acres to finish the Corner \$4,461,600:**
Road Frontage = Approx. 1200' on Hwy 92
Approx. 600' on Macland Road
- **3 Properties:** 3 Owners Linked - but will discuss
- **3 Homes on this Entire Estate**
(Sellers may want to relocate homes)
- County wants to rezone Commercial
- **Sewer** is in lower southeast corner of the 20 acre tract.
- **3 Acres @ Cindy Lane also Available for \$499,900.**

LAND BROKERS
**Jim Shurling
Pat Braithwaite
770-445-2127**

Information herein deemed reliable, but is subject to change without prior notice. Drawings are not to scale.