



# 4741 IBERIA AVENUE

Dallas, Texas 75207

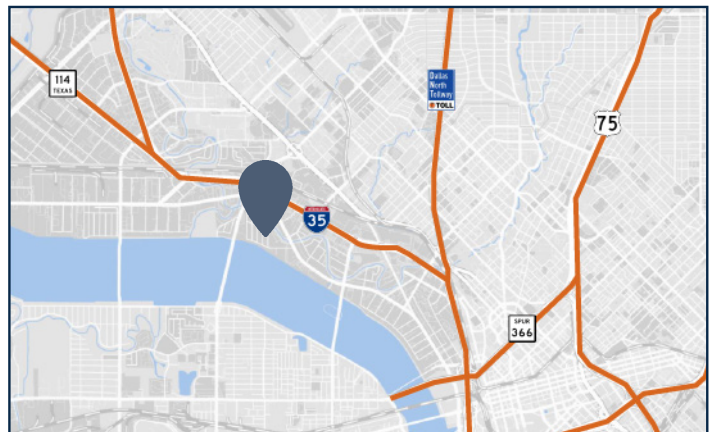


## PROJECT FACTS

- >> 9,600 SF Building
- >> Recently Renovated
- >> 100% HVAC
- >> Dock High Door
- >> Convenient Access to 1-35, I-30, Hwy 183 and Irving Boulevard

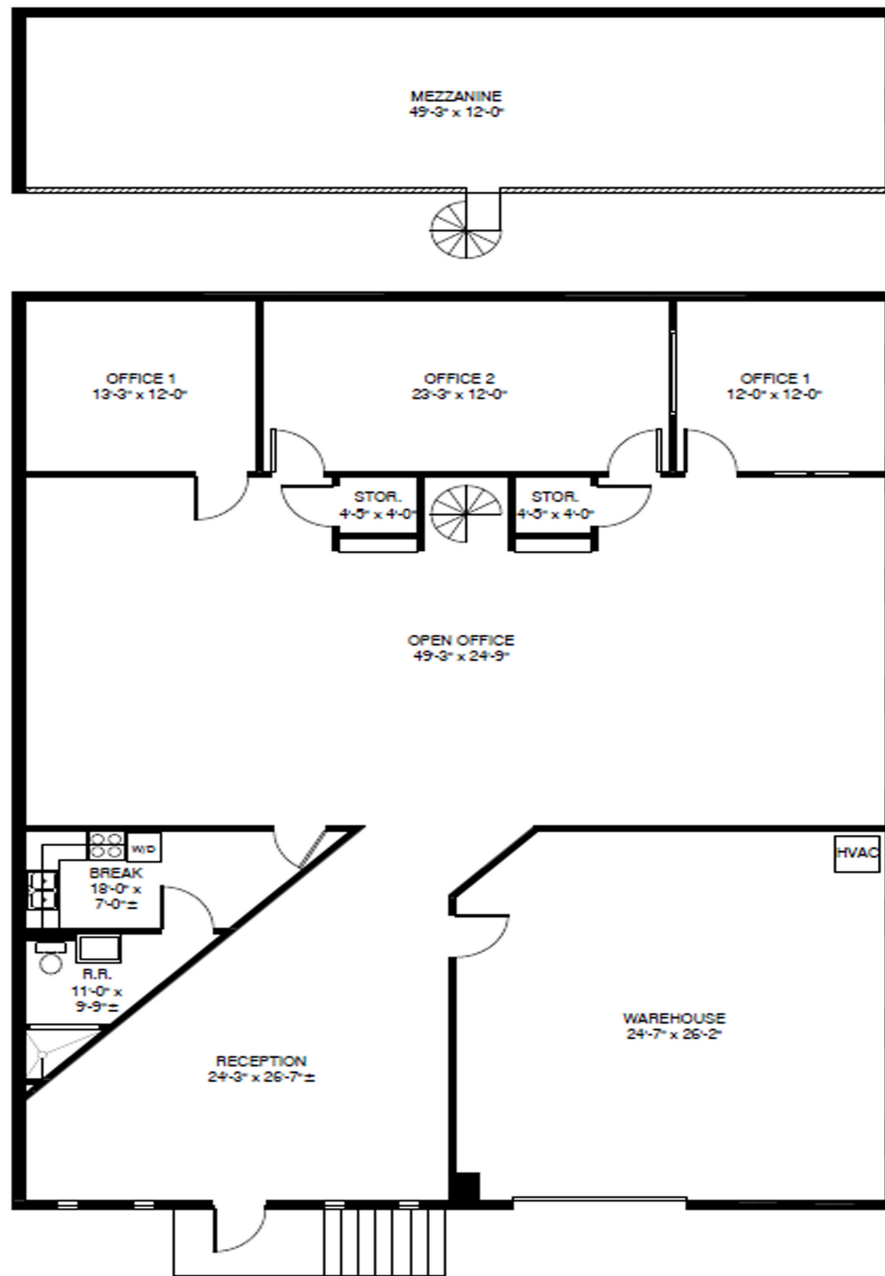
## CONTACT FOR INFORMATION

- >> Austin Busse  
972.354.8084  
abusse@dogwoodcommercial.com
- >> Andrew Crain  
972.942.8609  
acrain@dogwoodcommercial.com



# SUITE A - 3,928 RSF

4741 Iberia Avenue, Dallas, Texas 75207



**DOGWOOD**  
COMMERCIAL

Austin Busse  
abusse@dogwoodcommercial.com  
972.354.8084

Andrew Crain  
acrain@dogwoodcommercial.com  
972.942.8609