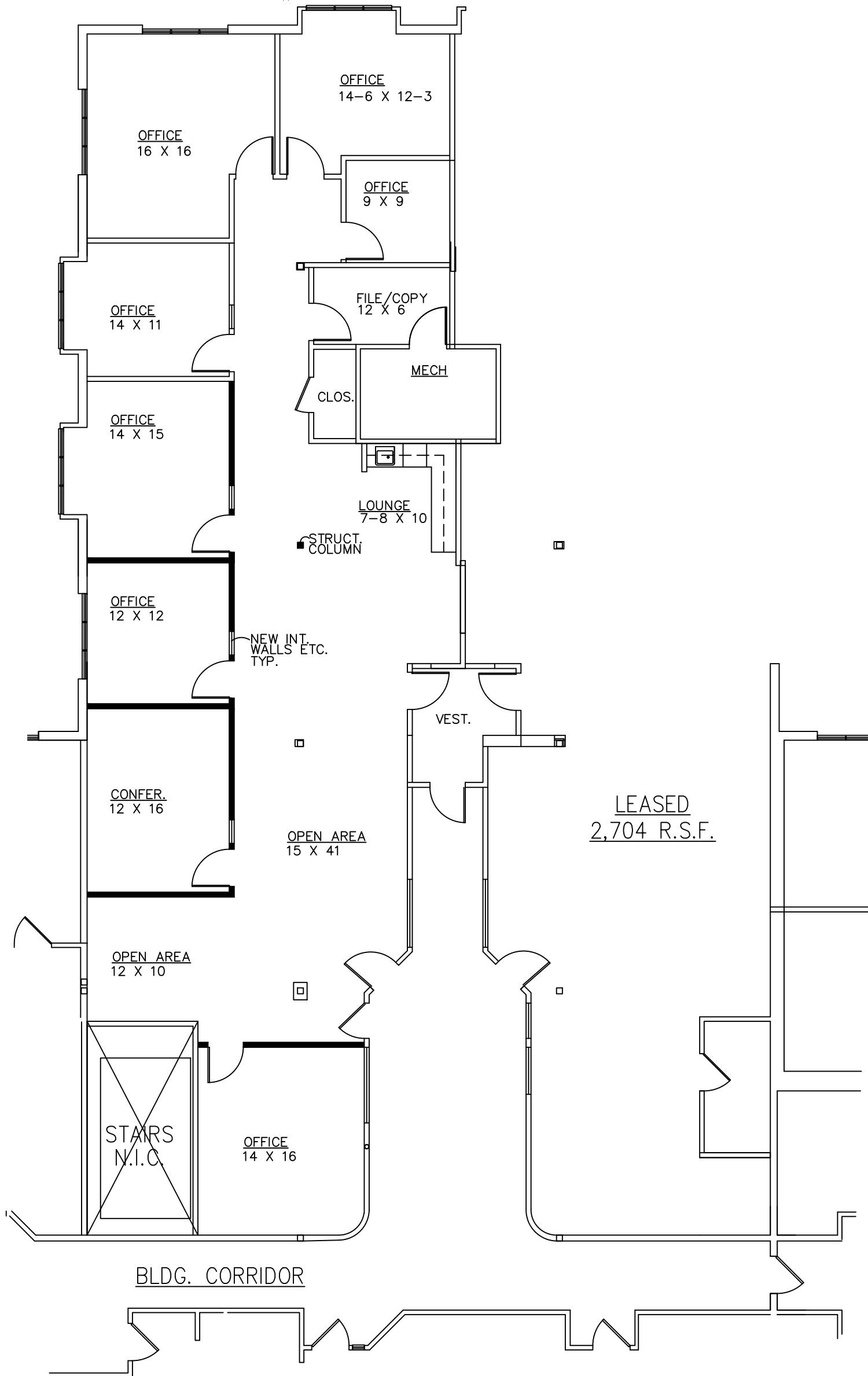


BEACHUM AND ROESER
GOVERNORS PLACE

33 BLOOMFIELD HILLS PARKWAY
BLOOMFIELD HILLS, MICHIGAN

PROPOSED FLOOR PLAN "A"
APPROX. 3,141 R.S.F.

3-4-2024
SUITE #240



PARTIAL SECOND FLOOR PLAN

SCALE: 1/8" = 1'-0"

FOR INFORMATION CALL:
BILL BEACHUM
248-647-7500