

451 CALIFORNIA ROAD

QUAKERTOWN, PA 18951



REPRESENTED BY
THE FLYNN COMPANY

ANDY PANCOAST
APANCOAST@FLYNNCO.COM
215-561-6565 X 125

MICHAEL BORSKI, SIOR
MBORSKIJR@FLYNNCO.COM
215-561-6565 X 119

MARK PAWLOWSKI
MPAWLOWSKI@FLYNNCO.COM
215-561-6565 X 146

The
Flynn
Company

+/- 50,339 SF FACILITY | AVAILABLE FOR LEASE

PROPERTY DETAILS:

CLEAR SPAN SPACE!!



Total Building Size: +/- 50,339 SF
Court Level Space: +/- 40,360 SF
Office/Gym/Locker Room/Reception: +/- 9,979 SF



Total Property Size: 4.51 acres



Currently six tennis courts, reception area, child care area, gym, and locker rooms. Great accommodations for basketball/volleyball/tennis/or other sports related uses.



Parking: 87 parking spaces



Ceiling Height: 37'5" max clear height



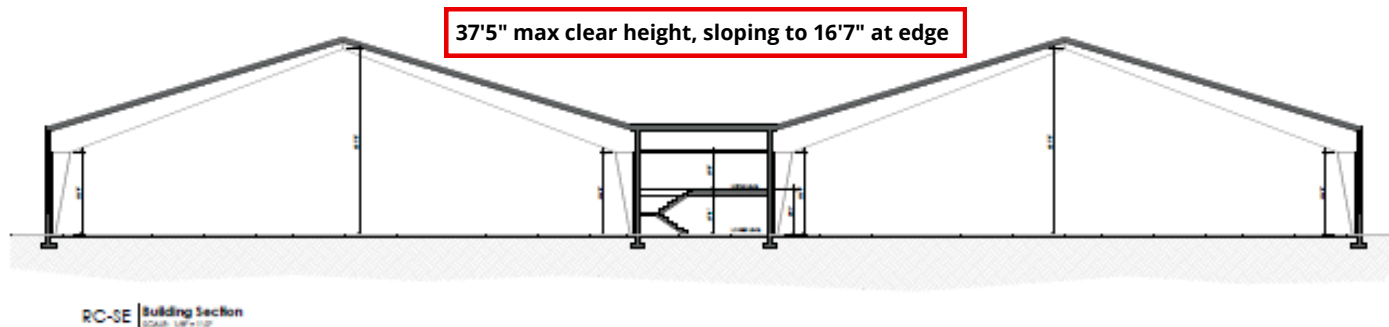
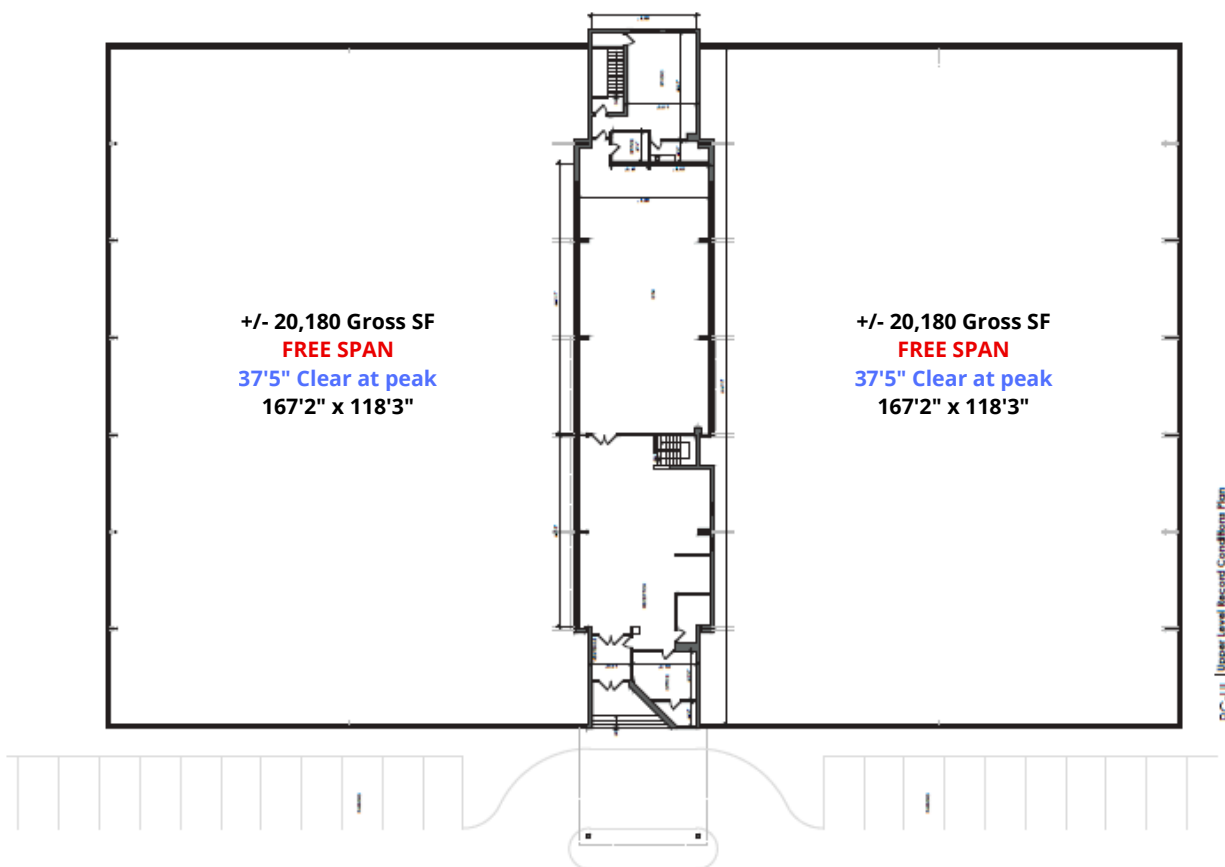
Location: In close proximity to major arteries Route 309, Route 313, Route 663, and I-476

THE FLYNN COMPANY

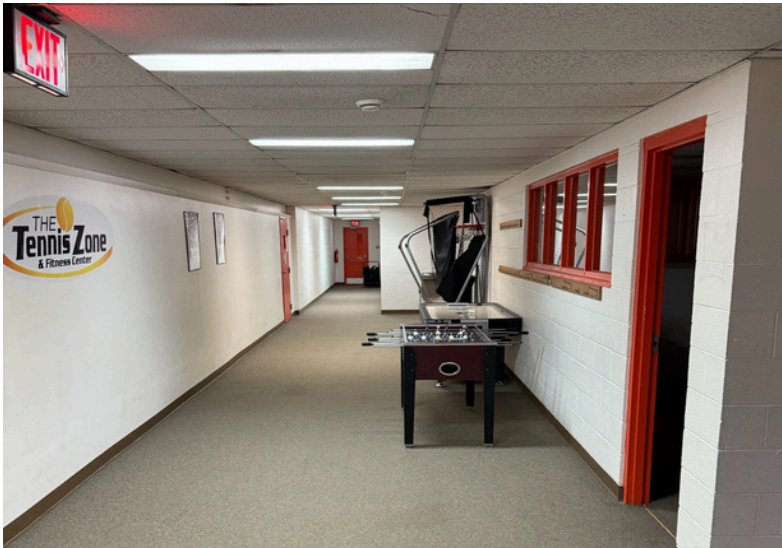
WWW.FLYNNCO.COM | 1621 WOOD STREET, PHILADELPHIA, PA 19103 | 215.561.6565

FLOOR PLANS

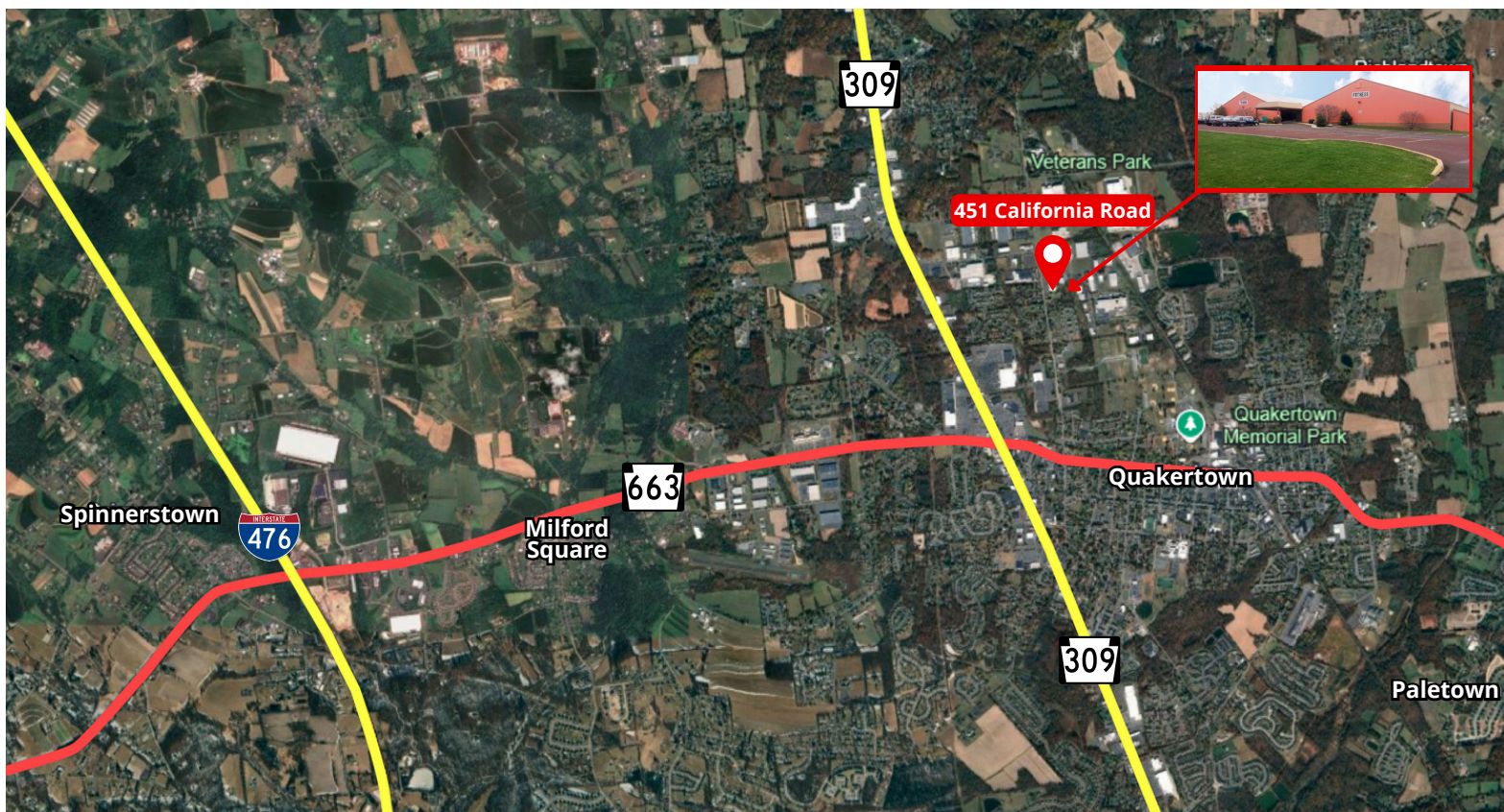
+/- 40,360 SF open floor area
+
+/- 9,979 SF of
office/reception/locker
rooms/gym/studio/sauna



PROPERTY PHOTOS



LOCATION



FOR MORE INFORMATION PLEASE CONTACT:

ANDY PANCOAST

APANCOAST@FLYNNCO.COM

215-561-6565 X 125

MICHAEL BORSKI JR., SIOR

MBORSKIJR@FLYNNCO.COM

215-561-6565 X 119

MARK PAWLOWSKI

MPAWLOWSKI@FLYNNCO.COM

215-561-6565 X 146

THE FLYNN COMPANY

WWW.FLYNNCO.COM | 1621 WOOD STREET, PHILADELPHIA, PA 19103 | 215.561.6565



TheFlynnCompany



[@flynncompany](https://www.instagram.com/flynncompany)