

# 249 CHURCH ST

PRIME TRIBECA • CORNER RETAIL AVAILABLE

SPACE 1

SPACE 2

249  
RETAIL SPACE  
PREMIER EQUITIES



PREMIER EQUITIES

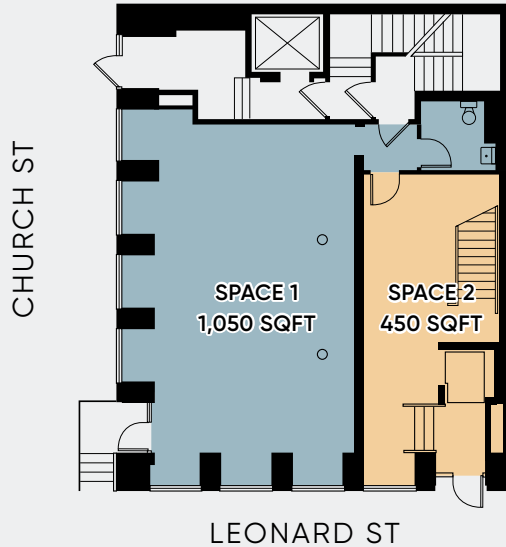
DAVID JACOBI  
P 212 421 3634  
M 917 992 9215  
david@premierequities.com

# Retail Property Specs

# 249 CHURCH ST

PRIME TRIBECA • CORNER RETAIL AVAILABLE

## Ground Floor



### LOCATION

Northeast corner of Leonard Street

### SPACE

#### Space 1

• Ground Floor: .....1,050 SQFT

#### Space 2:

• Ground Floor .....450 SQFT

• Lower Level .....1,750 SQFT

• Sub-lower Level.....1,750 SQFT

### POSSESSION

Immediate

### TERM

Negotiable

### FRONTAGE

120 FT total – 60 FT on Church Street and 60 FT on Leonard Street

### CEILING HEIGHT

Ground Floor: 15 feet

### NEIGHBORS

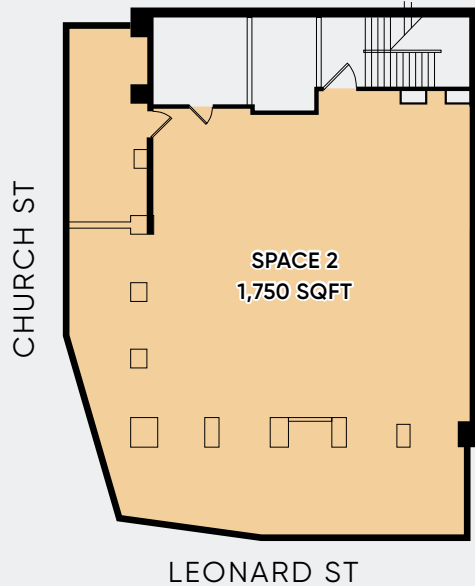
Sweaty Betty, Quick Cryo, James Perse, Y7 Studio, Tracy Anderson, Issey Miyake, Two Hands Restaurant & Bar, Ichimura, rag & bone, Shinola, Steven Alan, Tetsu, La Colombe, Thom Browne, Bouley Botanical, Thom Browne Womens, Aire Ancient Baths, Todd Snyder, and Lyons Den Power Yoga

- Delivered with new double-height glass storefront, ADA compliant bathroom, landmark approved flag and in vanilla-box condition

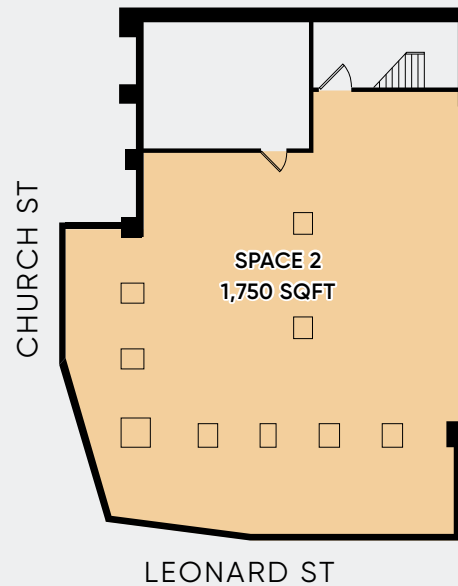
- Pop up and Pop-to-Perm terms allowed

- Next door to the celebrity hotspot Two Hands Restaurant and Bar on Church Street.

## Lower Level



## Sub-lower Level



# Neighborhood Retailers

# 249 CHURCH ST

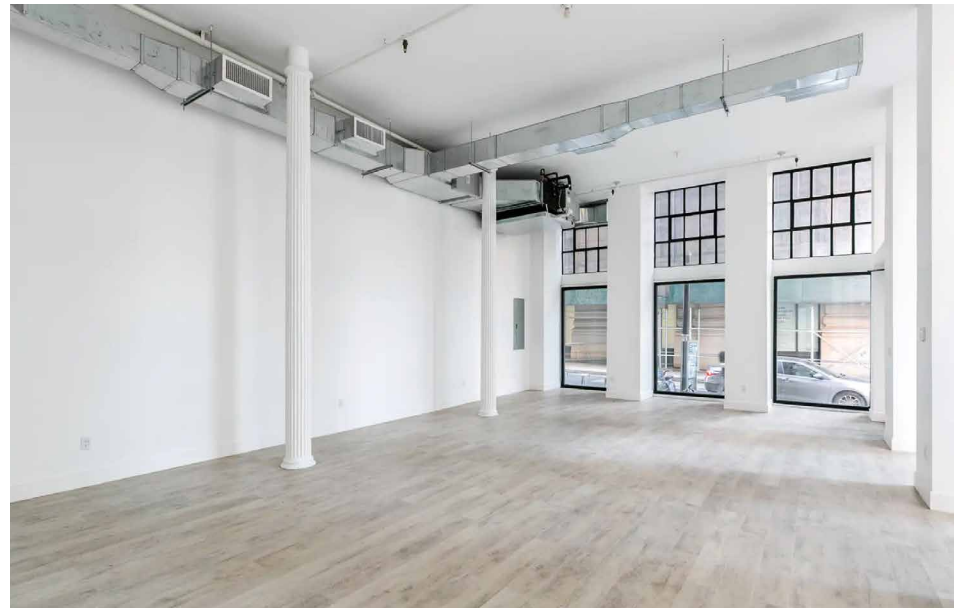
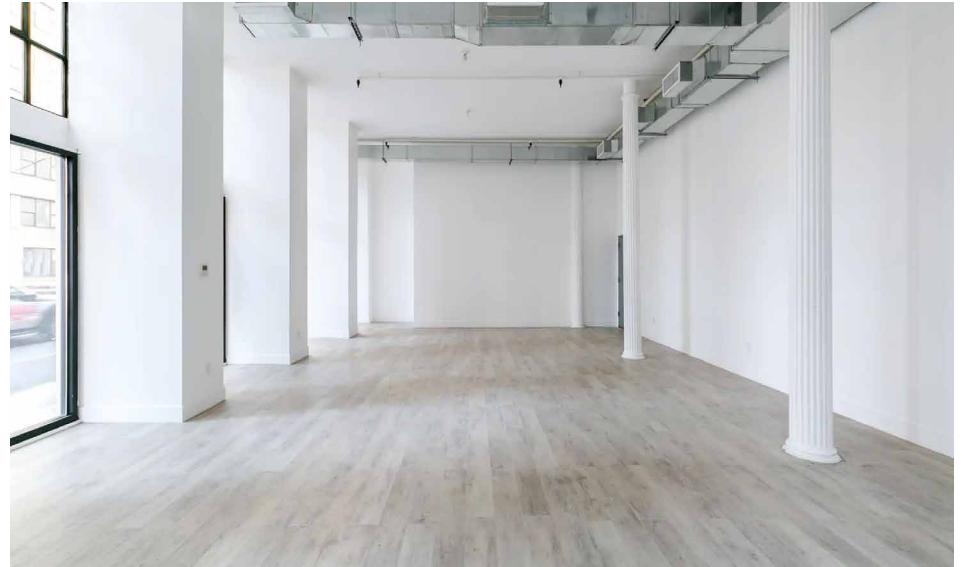
PRIME TRIBECA • CORNER RETAIL AVAILABLE



# The Space

# 249 CHURCH ST

PRIME TRIBECA • CORNER RETAIL AVAILABLE



**DAVID JACOBI**  
P 212 421 3634 | M 917 992 9215 | [david@premierequities.com](mailto:david@premierequities.com)

 PREMIER EQUITIES

# The Neighborhood

# 249 CHURCH ST

PRIME TRIBECA • CORNER RETAIL AVAILABLE

250 Church St



100 Franklin St



56 Leonard St



The Roxy Hotel

