



The Marketplace  
at SAVANNAH RIDGE

ALDI

RETAIL PROPERTY FOR LEASE

# MARKETPLACE AT SAVANNAH RIDGE

Hwy 231 and Joe B Jackson Blvd, Murfreesboro, TN 37128

**MICHAEL GALPIN**

615.627.3971

[mgalpin@bsmproperties.com](mailto:mgalpin@bsmproperties.com)

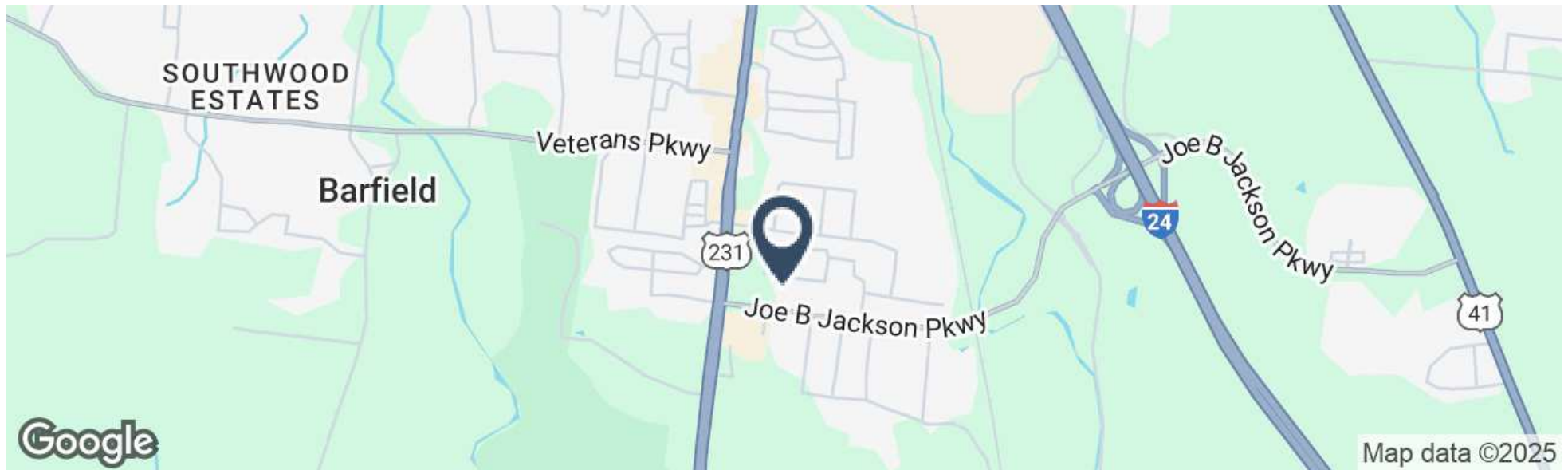
3011 Armory Dr, Suite 120, Nashville, TN 37204 • 615.373.9511 • [bsmproperties.com](http://bsmproperties.com)

**Baker Storey McDonald  
Properties**



# MARKETPLACE AT SAVANNAH RIDGE

Hwy 231 and Joe B Jackson Blvd, Murfreesboro, TN 37128



## PROPERTY DESCRIPTION

Located at the signalized intersection of Hwy 231 (Memorial Blvd) and Joe B. Jackson Blvd, this evolving retail destination sits directly across from the Walmart Supercenter, offering exceptional visibility and access in South Murfreesboro.

## PROPERTY HIGHLIGHTS

- Development features  $\pm 70,000$  SF of inline retail and outparcels ranging from 0.8 – 1.7 acres with up to 10,000 SF available for retail/restaurant use
- Anchored by Aldi (opened April 2022), with phased future outparcels planned through 2025
- High traffic counts: ~28,800 VPD on Hwy 231 southbound; ~10,500 VPD projected on Joe B. Jackson Blvd
- Direct connectivity to I-24 via Joe B. Jackson Parkway enhances regional accessibility



**MICHAEL GALPIN**

615.627.3971

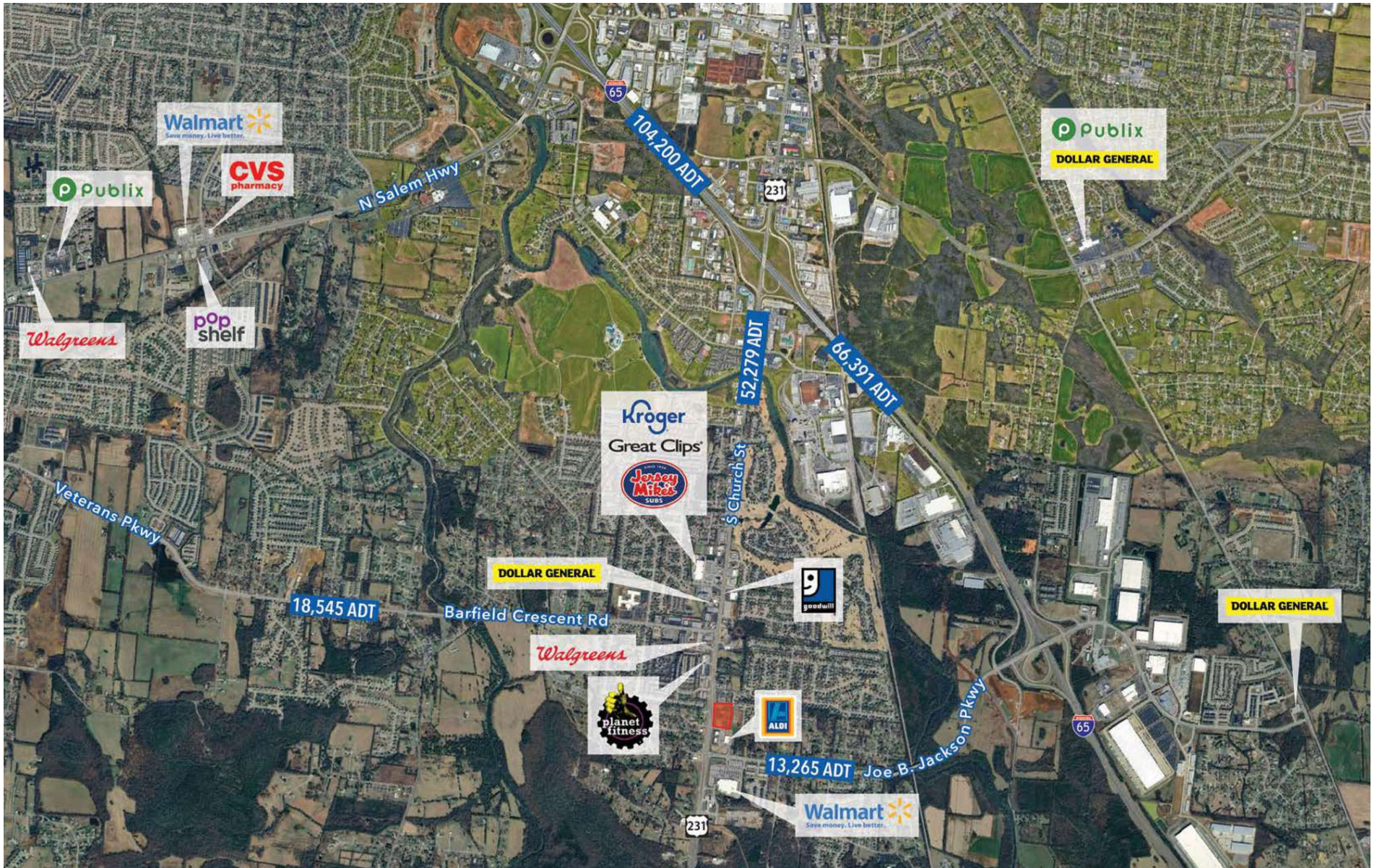
[mgalpin@bsmproperties.com](mailto:mgalpin@bsmproperties.com)

**Baker Storey McDonald**  
**Properties**



# MARKETPLACE AT SAVANNAH RIDGE

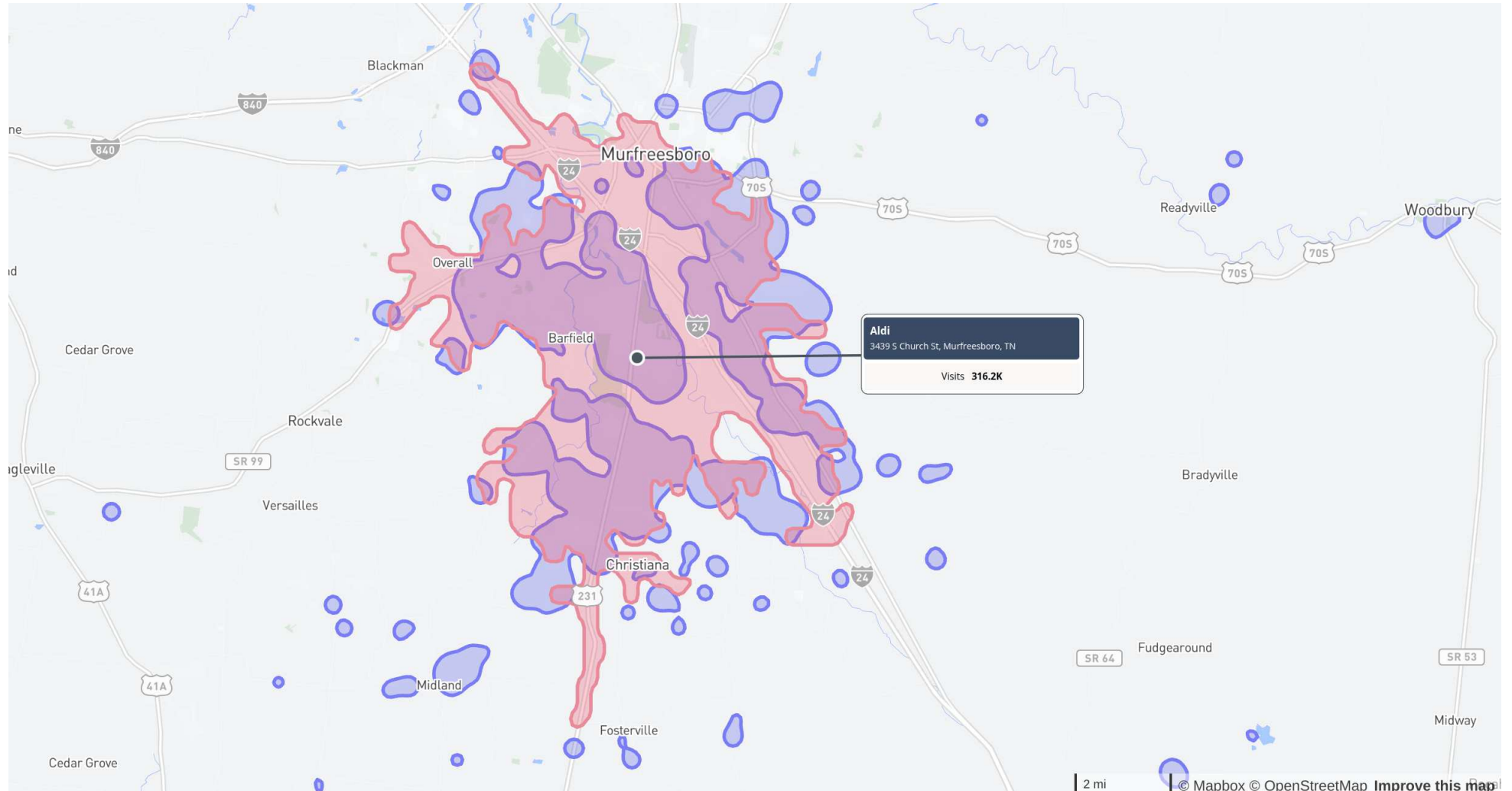
Hwy 231 and Joe B Jackson Blvd, Murfreesboro, TN 37128





# MARKETPLACE AT SAVANNAH RIDGE

Hwy 231 and Joe B Jackson Blvd, Murfreesboro, TN 37128



# MARKETPLACE AT SAVANNAH RIDGE

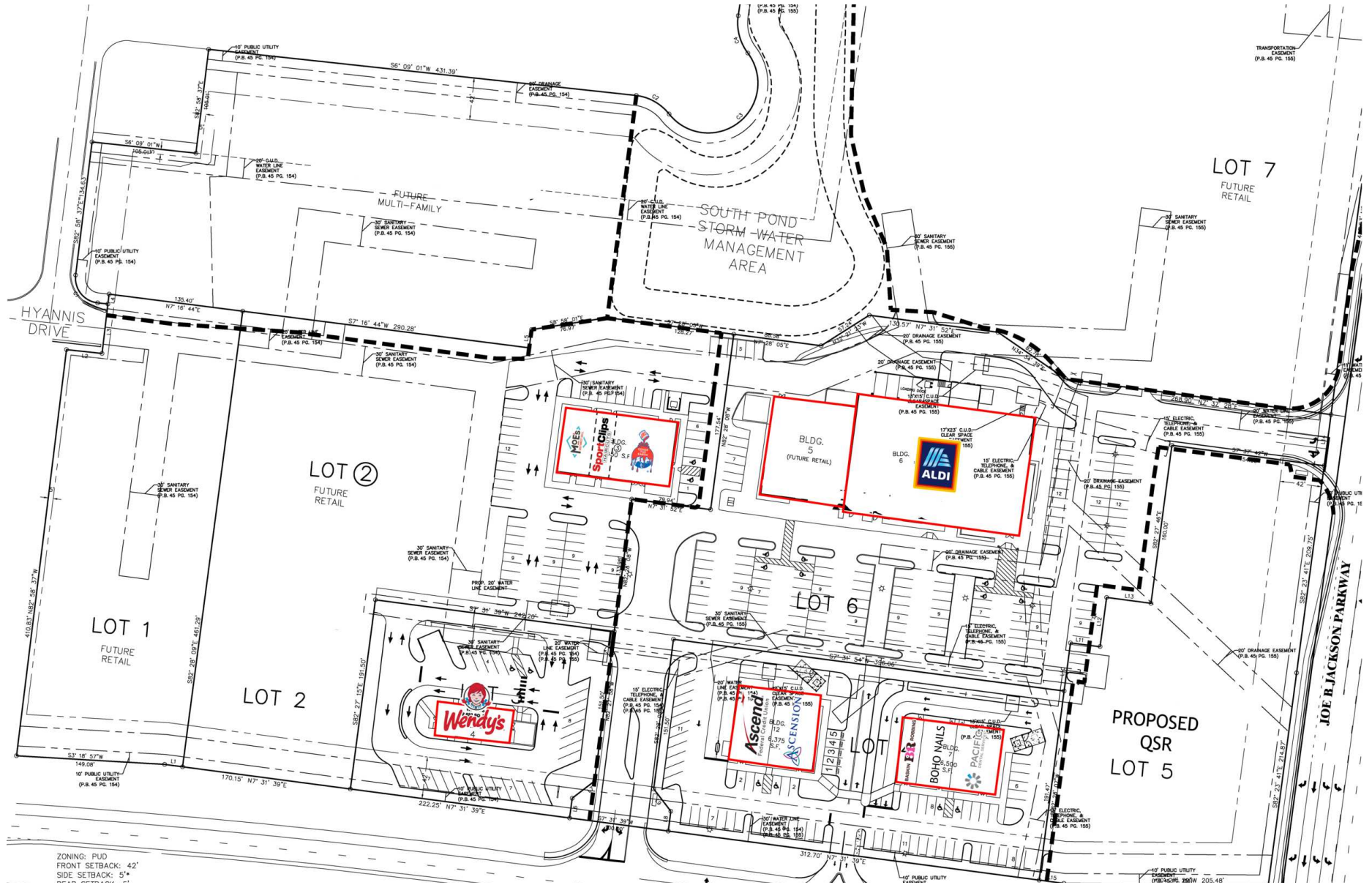
Hwy 231 and Joe B Jackson Blvd, Murfreesboro, TN 37128





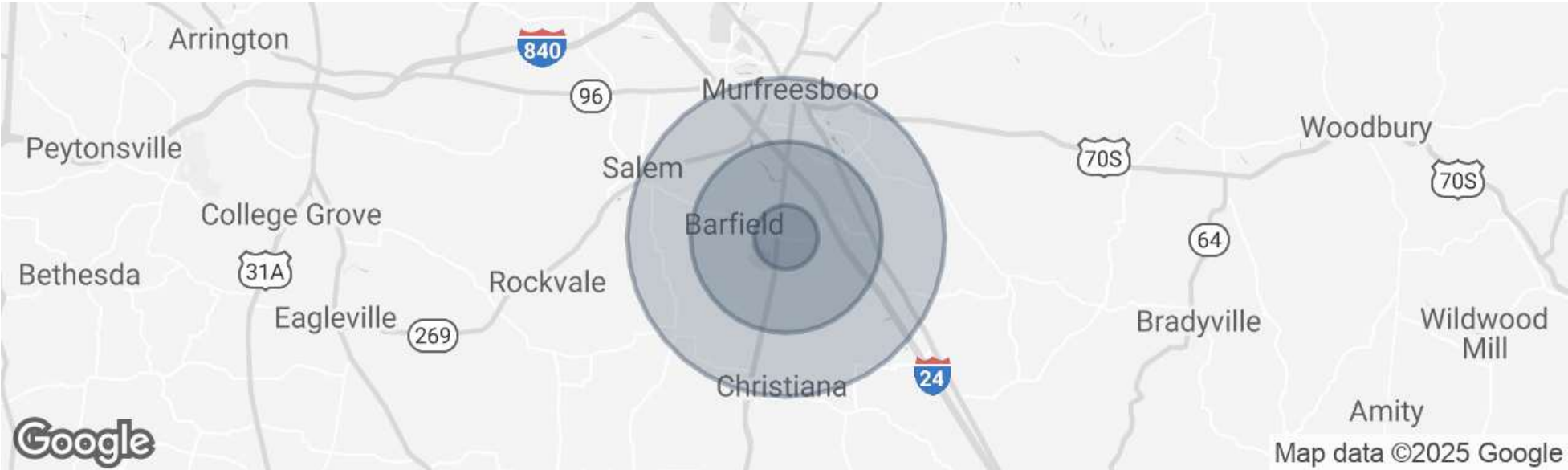
# MARKETPLACE AT SAVANNAH RIDGE

Hwy 231 and Joe B Jackson Blvd, Murfreesboro, TN 37128



# MARKETPLACE AT SAVANNAH RIDGE

Hwy 231 and Joe B Jackson Blvd, Murfreesboro, TN 37128



POPULATION	1 MILE	3 MILES	5 MILES
Total Population	6,952	26,430	86,064
Average Age	39	38	36
Average Age (Male)	38	37	35
Average Age (Female)	40	39	37

HOUSEHOLDS & INCOME	1 MILE	3 MILES	5 MILES
Total Households	2,641	10,005	32,191
# of Persons per HH	2.6	2.6	2.7
Average HH Income	\$108,746	\$104,248	\$96,399
Average House Value	\$398,211	\$402,840	\$396,940

Demographics data derived from AlphaMap