

FLEX SPACE FOR LEASE

4701 Mt. Hope Drive - Baltimore, MD 21215



62,860-square-foot flex building built in 1988; Zoned O/C

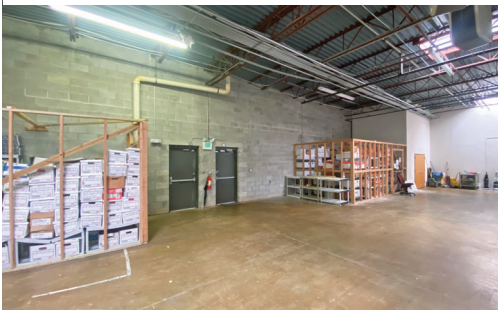
Wet sprinkler system; Conditioned office area

Located within Seton Business Park - a well established business community with local amenities

Within close proximity to Sinai Hospital, Reisterstown Road Plaza, I-695 and Rogers Metro Station

AVAILABILITY

- 7,000± SF available
- Potential to add dock-high loading
- Located in a HUB Zone and Enterprise Zone
- \$12.95 PSF, NNN



FOR MORE INFORMATION PLEASE CONTACT:

Paul F. Obrecht, III, SIOR
443-330-4802
pfobrechtiii@blueobrecht.com



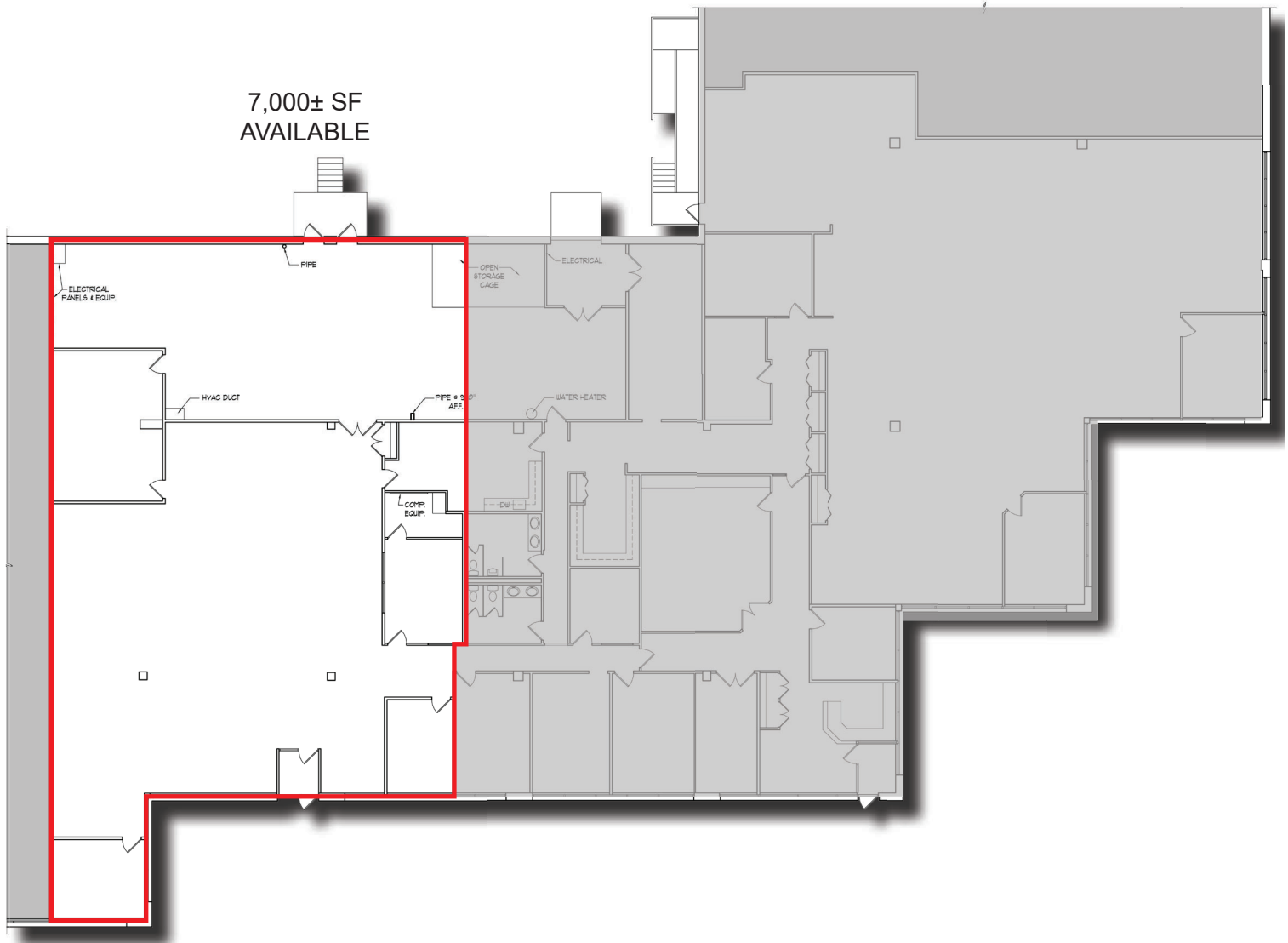
[instagram.com/blueobrecht](https://www.instagram.com/blueobrecht)

[linkedin.com/company/blue&obrecht](https://www.linkedin.com/company/blue&obrecht)

www.blueobrecht.com

410-561-5568

4701 Mt. Hope Drive FLEX SPACE FOR LEASE



Information is from sources deemed reliable, but no warranty or representation is made to the accuracy thereof. Information is submitted subject to errors, omissions, prior sale, or lease withdrawal without notice.