



**COLDWELL
BANKER
COMMERCIAL**

ALFRED SALIBA REALTY

68± ACRES WEST OF DOTHAN, ALABAMA

\$1,700,000

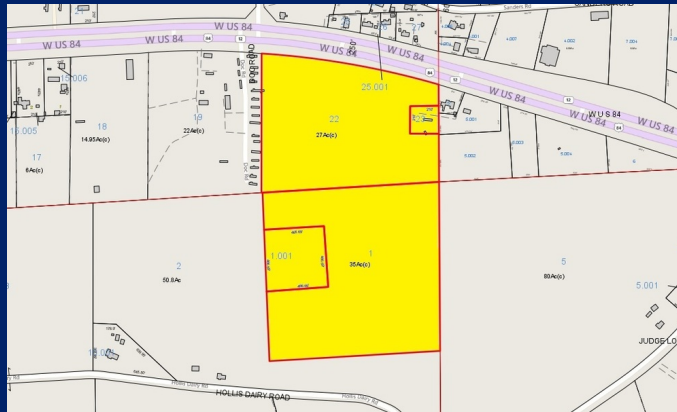
10061 West U S Highway 84
Newton, AL 36352

AVAILABLE SPACE

68 Acres

AREA

Growing area 2.75 miles west of Dothan, Alabama.



FOR SALE

ALFREDSALIBACOMMERCIAL.COM

OFFICE

Brett Strickland

334.701.8947

bstrickland@alfredslibarealty.com

AL #000098775

©2019 Coldwell Banker Real Estate LLC, dba Coldwell Banker Commercial Alfred Saliba Realty. All rights reserved. Coldwell Banker Commercial® and the Coldwell Banker Commercial logo are registered service marks owned by Coldwell Banker Real Estate LLC. Coldwell Banker Real Estate LLC, dba Coldwell Banker Commercial Affiliates fully supports the principles of the Fair Housing Act and the Equal Opportunity Act. Each office is independently owned and operated. The information provided is deemed reliable, but it is not guaranteed to be accurate or complete, and it should not be relied upon as such. This information should be independently verified before any person enters into a transaction based upon it.

**COLDWELL BANKER COMMERCIAL
ALFRED SALIBA REALTY**

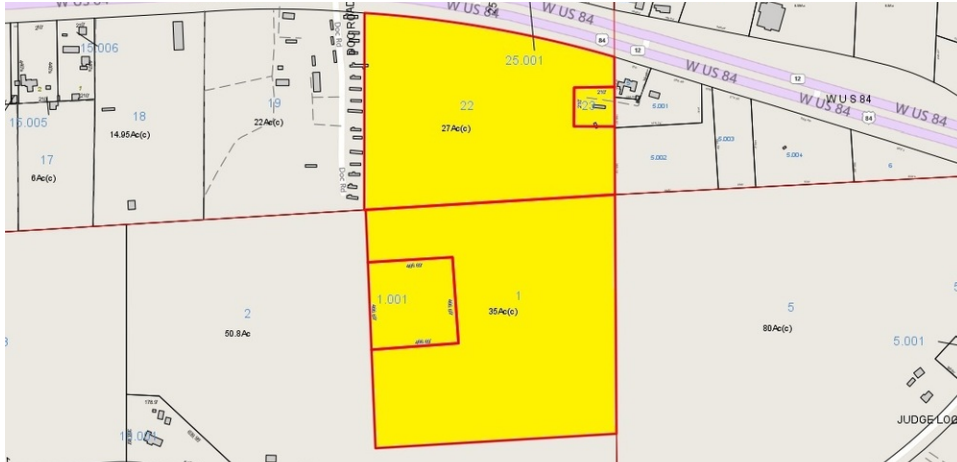
410 N. Shady Lane, Dothan, AL 36303
334.793.6600



68± ACRES WEST OF DOTHAN, ALABAMA

10061 West U S Highway 84, Newton, AL 36352

SALE



OFFERING SUMMARY

Sale Price:	\$1,700,000
Lot Size:	68.0 Acres
Zoning:	None
Market:	Houston County
Submarket:	West Houston County
Traffic Count:	19,680
Price / SF:	\$0.57

PROPERTY OVERVIEW

68± Acres West of Dothan, Alabama

LOCATION OVERVIEW

Growing area 2.75 miles west of Dothan, Alabama.

ALFREDSalibaCOMMERCIAL.COM

Brett Strickland
334.701.8947
bstrickland@alfredsalibarealty.com
AL #000098775

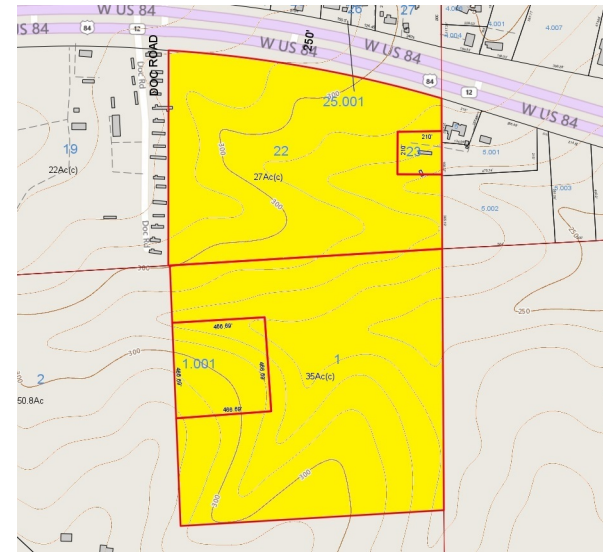
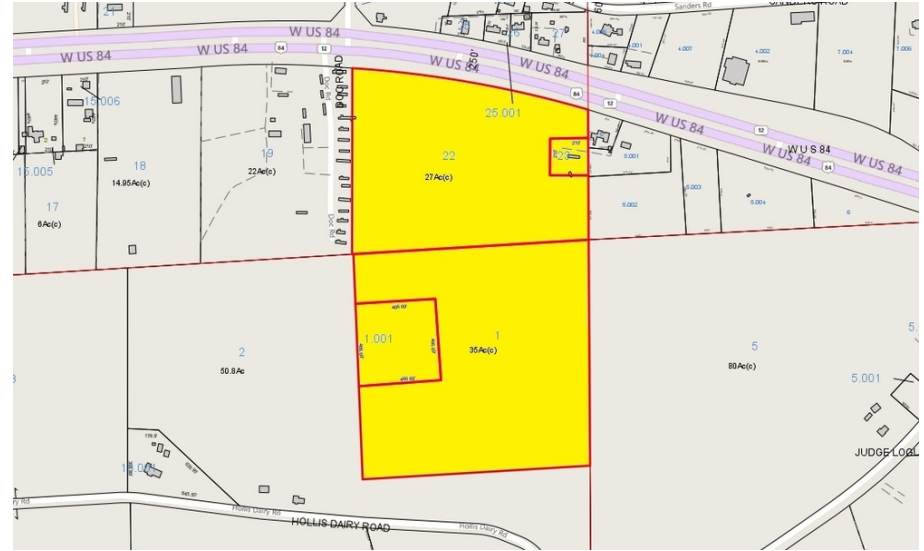




68± ACRES WEST OF DOTHAN, ALABAMA

10061 West U S Highway 84, Newton, AL 36352

SALE



ALFREDALIBACOMMERCIAL.COM

Brett Strickland
334.701.8947
bstrickland@alfredsalibarealty.com
AL #000098775

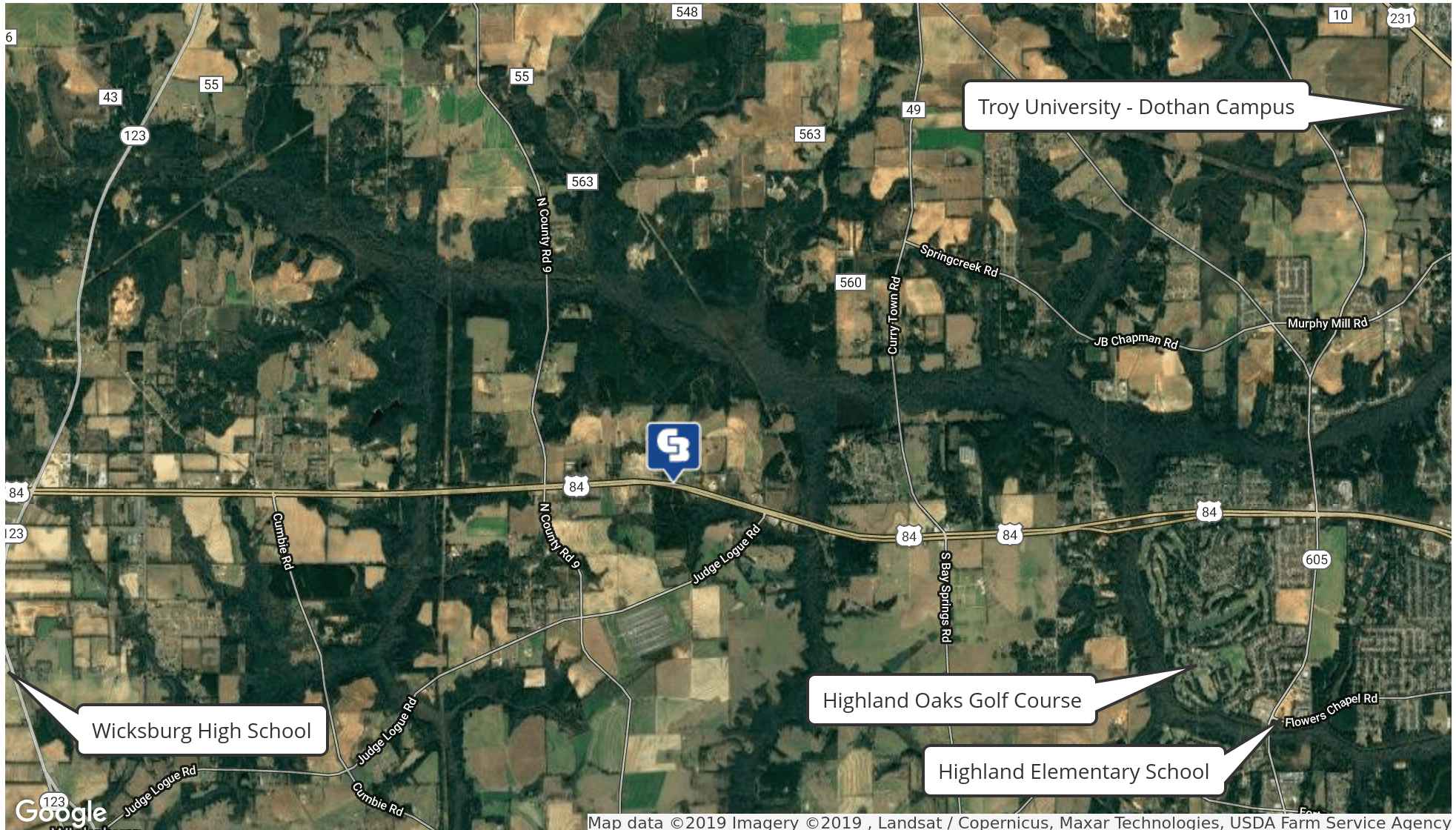




68± ACRES WEST OF DOTHAN, ALABAMA

10061 West U S Highway 84, Newton, AL 36352

SALE



Map data ©2019 Imagery ©2019, Landsat / Copernicus, Maxar Technologies, USDA Farm Service Agency

ALFREDSALIBACOMMERCIAL.COM

Brett Strickland
334.701.8947
bstrickland@alfredslibarealty.com
AL #000098775

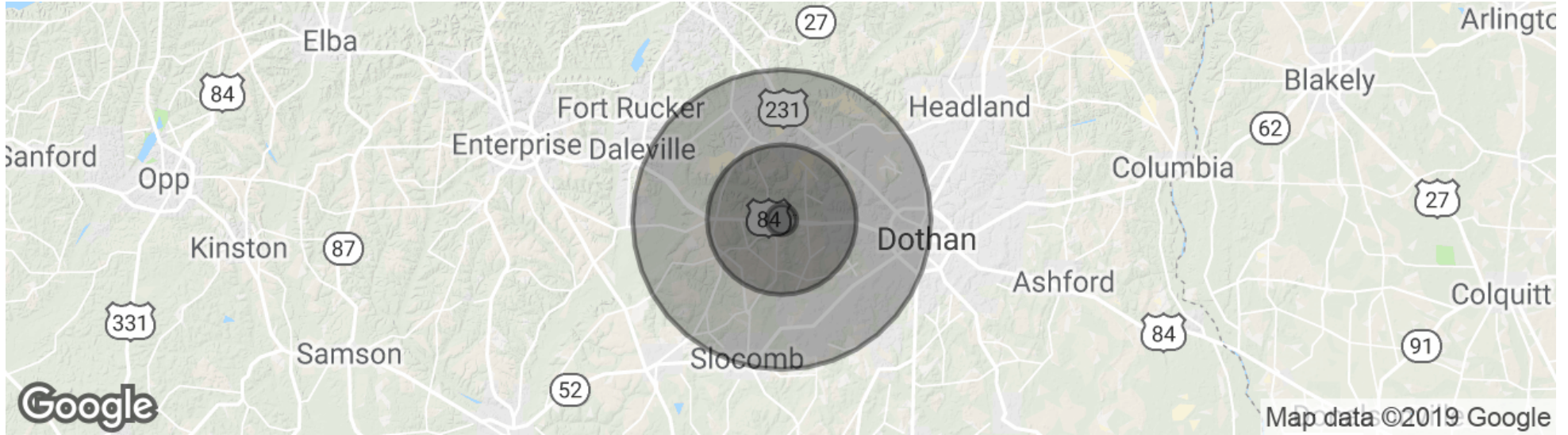
 **COLDWELL
BANKER
COMMERCIAL**
ALFRED SALIBA REALTY



68± ACRES WEST OF DOTHAN, ALABAMA

10061 West U S Highway 84, Newton, AL 36352

SALE



POPULATION

	1 MILE	5 MILES	10 MILES
Total population	271	8,351	59,799
Median age	37.4	38.0	38.2
Median age (Male)	36.7	37.3	37.1
Median age (Female)	38.0	39.2	39.4

HOUSEHOLDS & INCOME

	1 MILE	5 MILES	10 MILES
Total households	102	3,176	23,034
# of persons per HH	2.7	2.6	2.6
Average HH income	\$63,082	\$69,320	\$67,208
Average house value	\$165,363	\$168,130	\$183,063

* Demographic data derived from 2010 US Census

ALFREDSALIBACOMMERCIAL.COM

Brett Strickland
334.701.8947
bstrickland@alfredsalibarealty.com
AL #000098775

