

TWINSBURG OFFICE/WAREHOUSE/FLEX



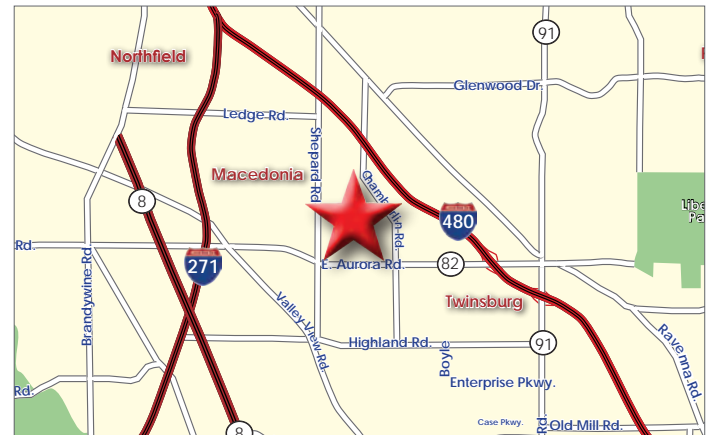
1927-1947 E Aurora Rd.
Twinsburg, OH 44087

Property Features

- Building Total: 12,480 SF

UNIT	TOTAL SF	WH SF	OFFICE SF
Unit 1945	2,000 SF	1,600 SF	400 SF
Unit 1935	2,000 SF	2,000 SF	0 SF

- Zoning: I-2 Limited Industrial
- Clear Height: 12'
- Heat: HVAC
- Lighting: Fluorescent
- Power: 120/208, 3PH
- Lease Rate: Warehouse: \$7.50/SF gross
Office: \$11.00/SF gross



Joe Hauman, CCIM

+1 440 591 3723

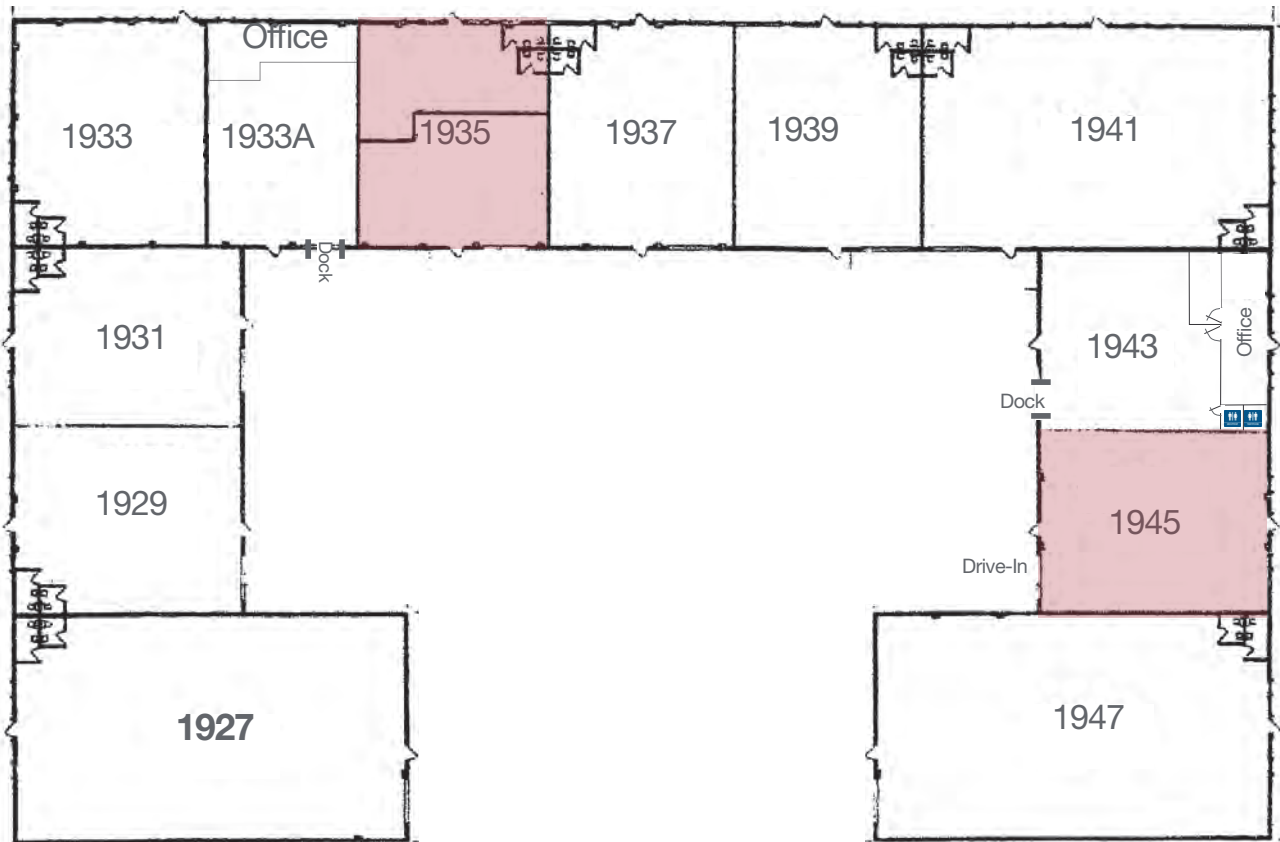
joe.hauman@naipvc.com

David Hexter, SIOR

+1 216 455 0890

dhexter@naipvc.com

For Lease Site Plan and Aerial



Joe Hauman, CCIM
+1 440 591 3723
joe.hauman@naipvc.com

David Hexter, SIOR
+1 216 455 0890
dhexter@naipvc.com

BUILDING INFORMATION SHEET

LOCATION: 1927-1947 E Aurora Road, Twinsburg, OH

SPACE AVAILABLE:

Unit	WH SF	Office SF
1945	1,600 SF	400 SF
1935	2,000 SF	0 SF

MAXIMUM CONTIGUOUS: 2,000 SF

CONSTRUCTION: Masonry

ZONING: I-2 Limited Industrial

CEILING HEIGHT 12'

DRIVE-IN: 1 – Unit 1945

DOCK: 1 – Unit 1935

PARKING: Ample

HEAT: Gas HVAC

LIGHTING: Fluorescent

LEASE RATE: Warehouse: \$7.50/SF gross

Office: \$11.00/SF gross

COMMENTS: Across from Cornerstone Industrial Park

CONTACT: Joe Hauman, CCIM / 440.591.3723 / joe.hauman@naipvc.com
David R. Hexter, SIOR / 216.455.0890 / dhexter@naipvc.com



This information has been secured from sources we believe to be reliable, but we make no representations or warranties, expressed or implied, as to the accuracy of the information. References to square footage or age are approximate. Buyer must verify the information and bears all risk for any inaccuracies.