



**601 BUCKNER ST. ELSMERE, KY 41018**  
AVAILABLE FOR LEASE



**PROPERTY HIGHLIGHTS**

**1,500 Total SqFt**

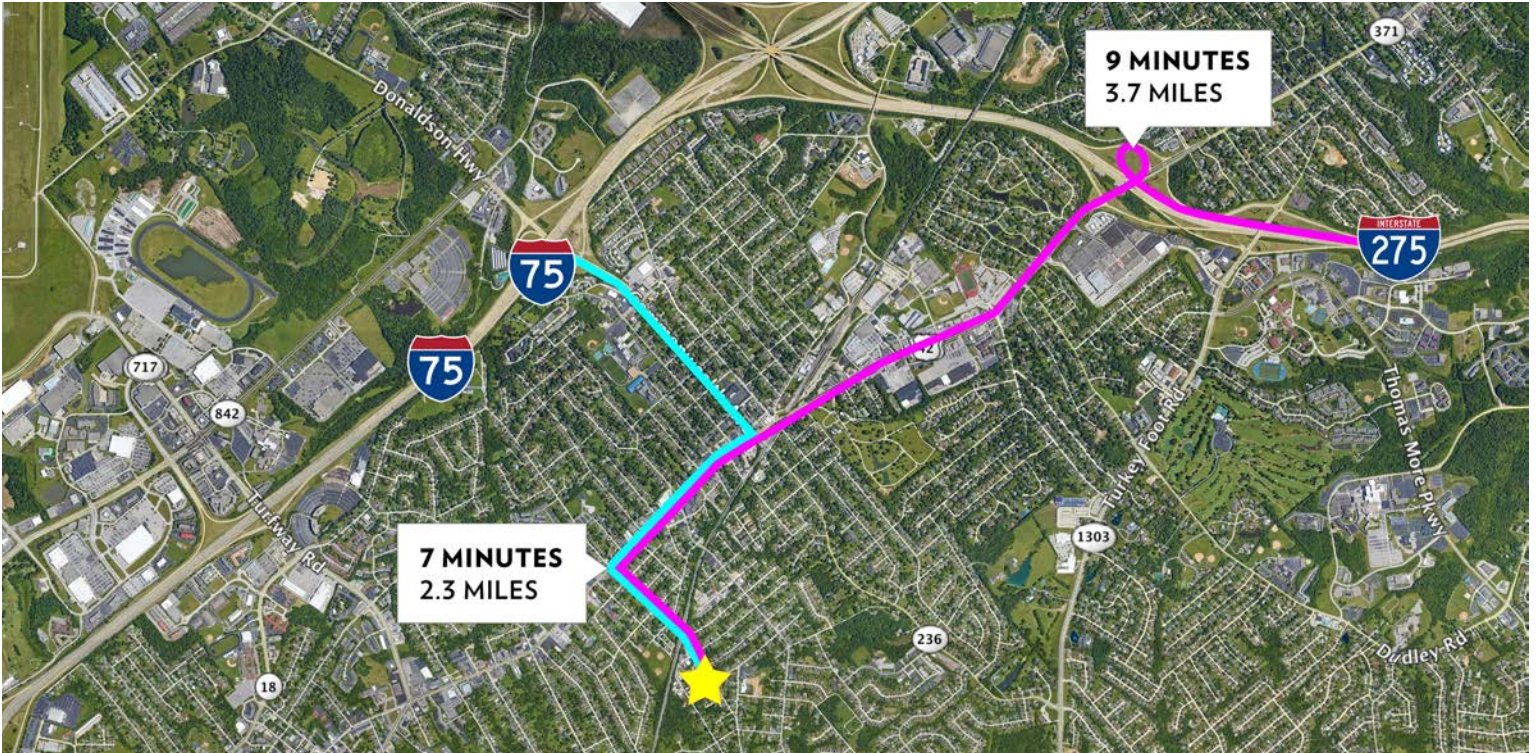
- Located in City of Elsmere minutes to I-71/75 and I-275
- Three (3) grade level doors
- \$11.00/SqFt gross (\$1,375/month) + electric/water

Warehouse SqFt:	1,500 (33.5'x45')
Office SqFt:	To Suit
Clear Height:	12'-14'
Year Built:	2005
Type Construction:	Metal
Lighting:	T-5's
Column Spacing:	Clear span
Dock door:	None
Drive-in door:	Three (3) - 8'x12'
Sprinkler:	None
Electrical Service:	120/208 - Single phase
Roof:	Metal
Parking Lot:	Two (2) spaces
Restrooms:	One (1)

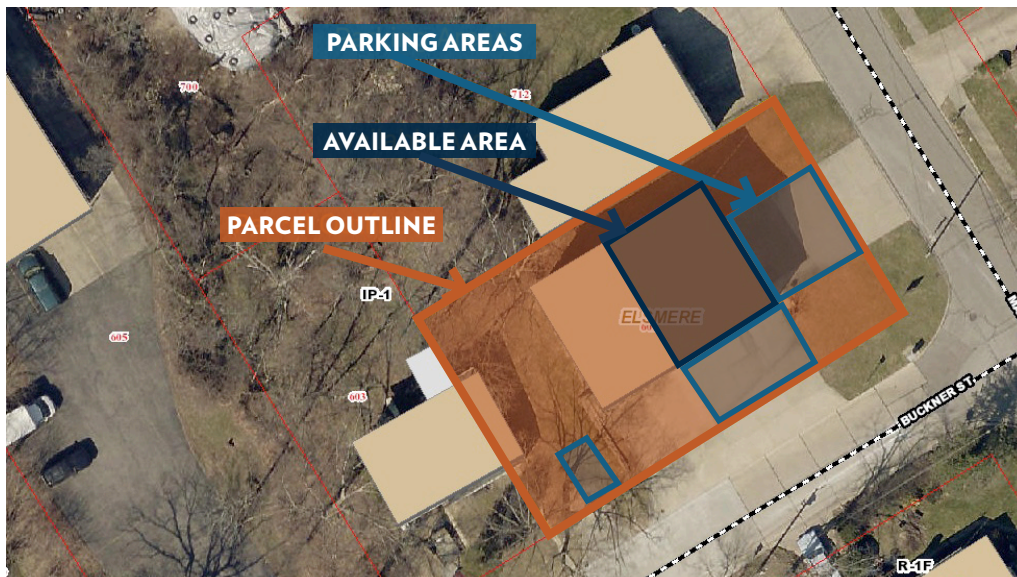
INFO@SQFTCOMMERCIAL.COM | (513) 843-1600 | [SQFTCOMMERCIAL.COM](http://SQFTCOMMERCIAL.COM)

# 601 BUCKNER ST. ELSMERE, KY

## DISTANCE MAP



## AERIAL VIEW



INFO@SQFTCOMMERCIAL.COM | (513) 843-1600 | [SQFTCOMMERCIAL.COM](https://www.sqftcommercial.com)



**Roddy MacEachen**  
(513) 739-3985  
[Roddy@SqFtCommercial.com](mailto:Roddy@SqFtCommercial.com)

**Jared Wagoner**  
(812) 890-1768  
[Jared@SqFtCommercial.com](mailto:Jared@SqFtCommercial.com)

BROCHURE DESIGNED BY NICK TEDESCHI. CONTACT NICK AT [HELLO@DESIGNEDBYNICK.COM](mailto:HELLO@DESIGNEDBYNICK.COM) OR 781-752-9699 TO DISCUSS YOUR MARKETING NEEDS.