



For sublease

4690 128th Ave, Holland, Michigan 49424

67,200 SF

 **JLL** SEE A BRIGHTER WAY

4690 128th Ave

This single-tenant industrial building in Holland, Michigan, is a rare opportunity for a user. The 67,200 SF facility, built in 1997, sits on 10.85 acres and includes approximately 1,000 SF of office space. Key features include heavy power, 21.5' to 25' clear heights, and excellent loading capabilities with eight docks and one drive-in door.



Property Details

Building Size	67,200 SF
Office Size	±1,000 SF
Land Size	10.85 AC
Clear Height	21.5' - 25'
Docks	8 exterior docks
Drive Ins	1 total (9' w x 11' h)

Power	2,500a/480v 3-Phase
Columns	40' x 40'
Sprinklers	Wet
Year Built	1997
Parking	52 surface spaces
Zoning	I-1

Location

The property is located in the Holland North Submarket of Holland, Michigan, an area with a 2025 estimated population of 140,401 within a 10-mile radius. The location offers excellent accessibility, situated near major roadways like US-31, which sees daily traffic volumes of over 30,000 vehicles. Manufacturing is the dominant local industry, accounting for 1,056 jobs within a 1-mile radius.

Lease Rate:

\$5.75/NNN

CAM:

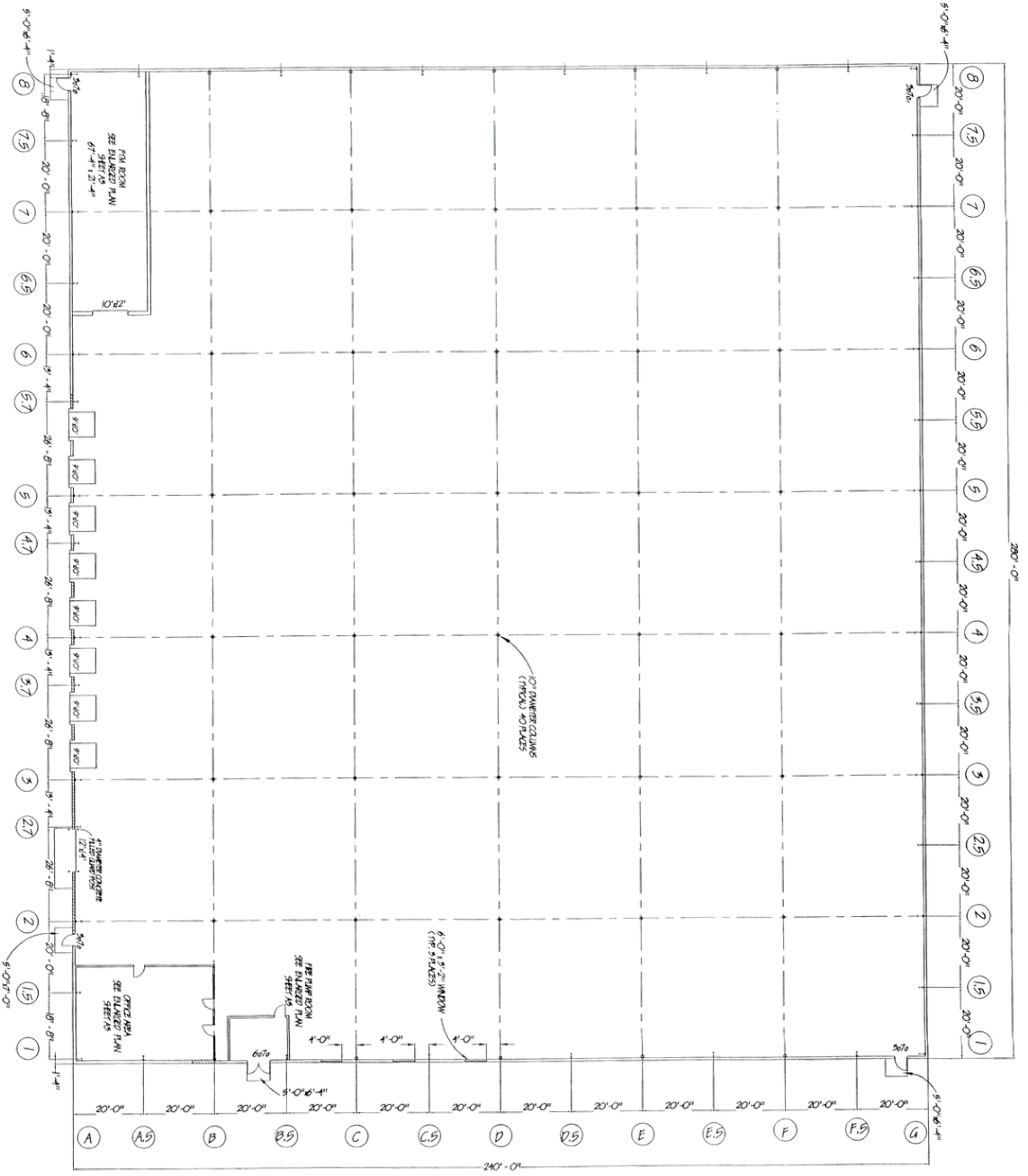
\$0.92 PSF

Sublease Exp:

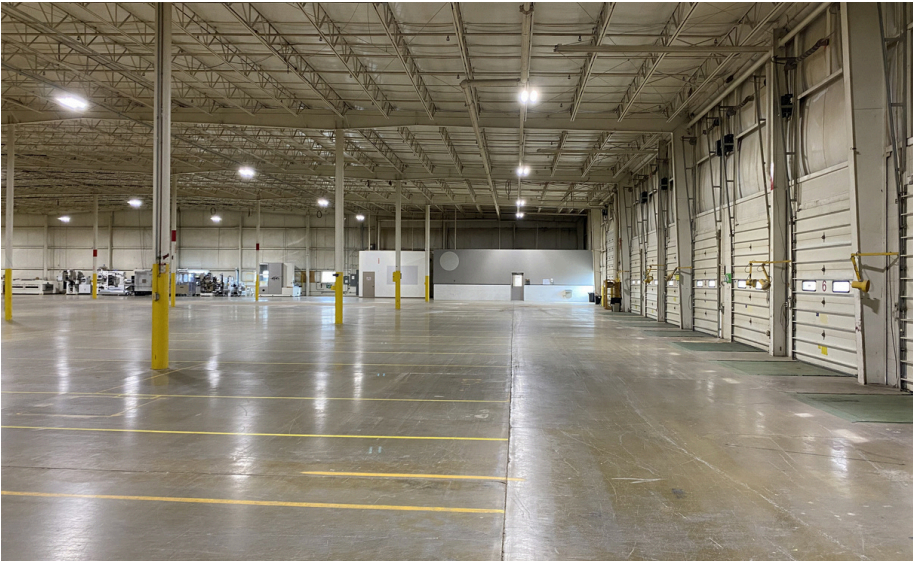
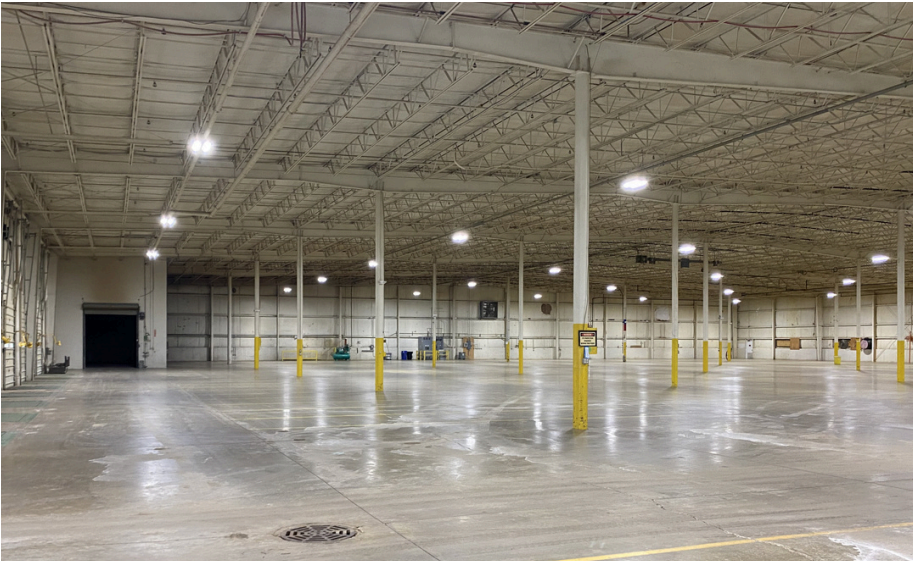
December 31, 2030



Floor plan

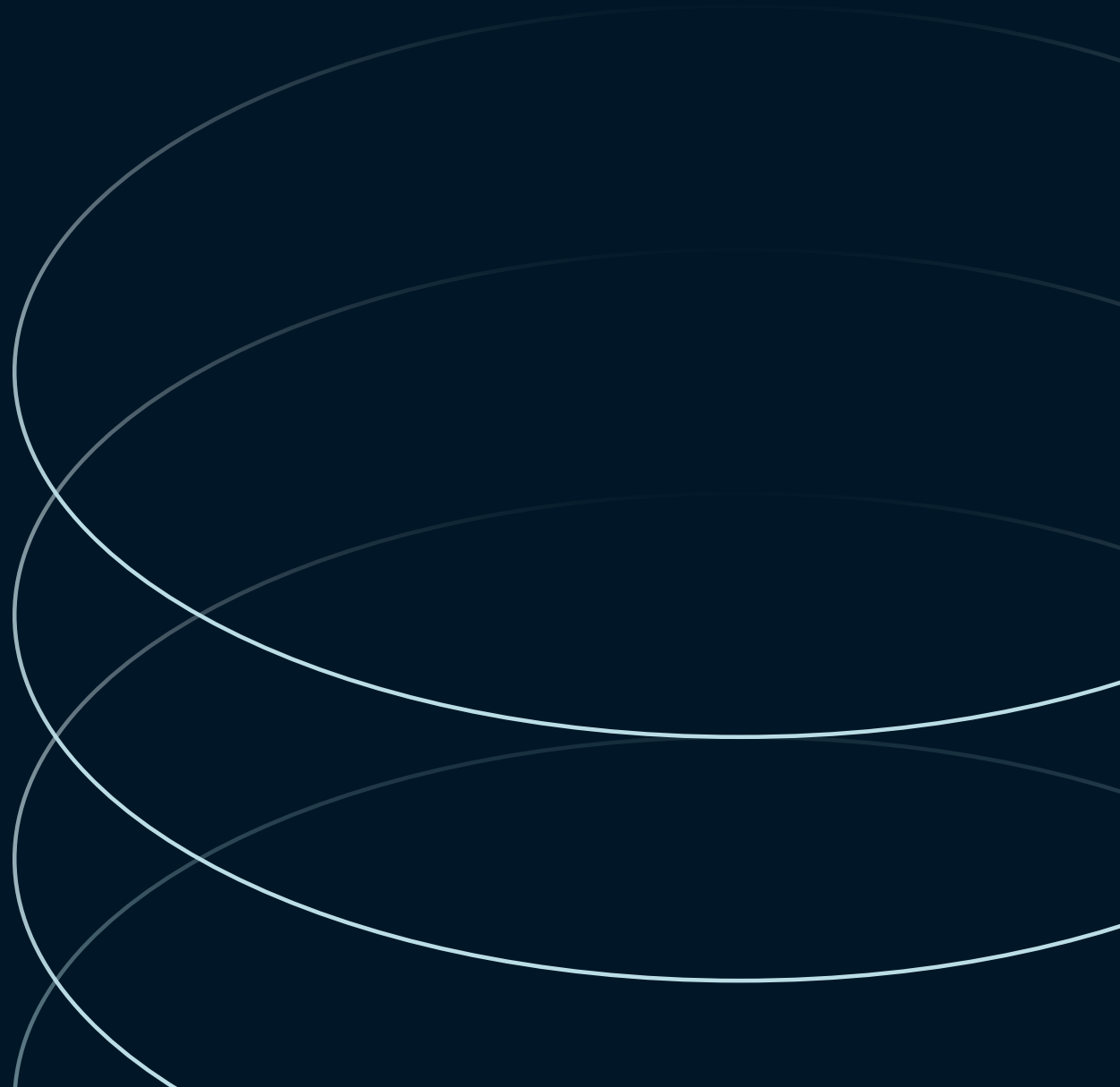


Warehouse photos



Office photos





Jaden Mabin

Associate, Brokerage
jaden.mabin@jll.com
+1 269 329 9736

Chip Hurley, SIOR, CCIM

Senior Vice President
chip.hurley@jll.com
+1 616 304 5410