

# MIXED USE PROPERTY FOR SALE OR LEASE

1327 Dr MLK Jr St S, St Petersburg, FL 33705



**Sale Price: \$799,000**  
**Lease Rate: \$21.00/sf NNN**

Jay Billings, Commercial Specialist  
Jay@cprteam.com (636)-219-9156

Harrison Gault, Sales Associate  
Harrison@cprteam.com (727) 677-8070



# Highlights



2,804 SF Property zoned CCT-1



Open layout for easy conversion to your desired use



High visibility on Dr. MLK Jr St S



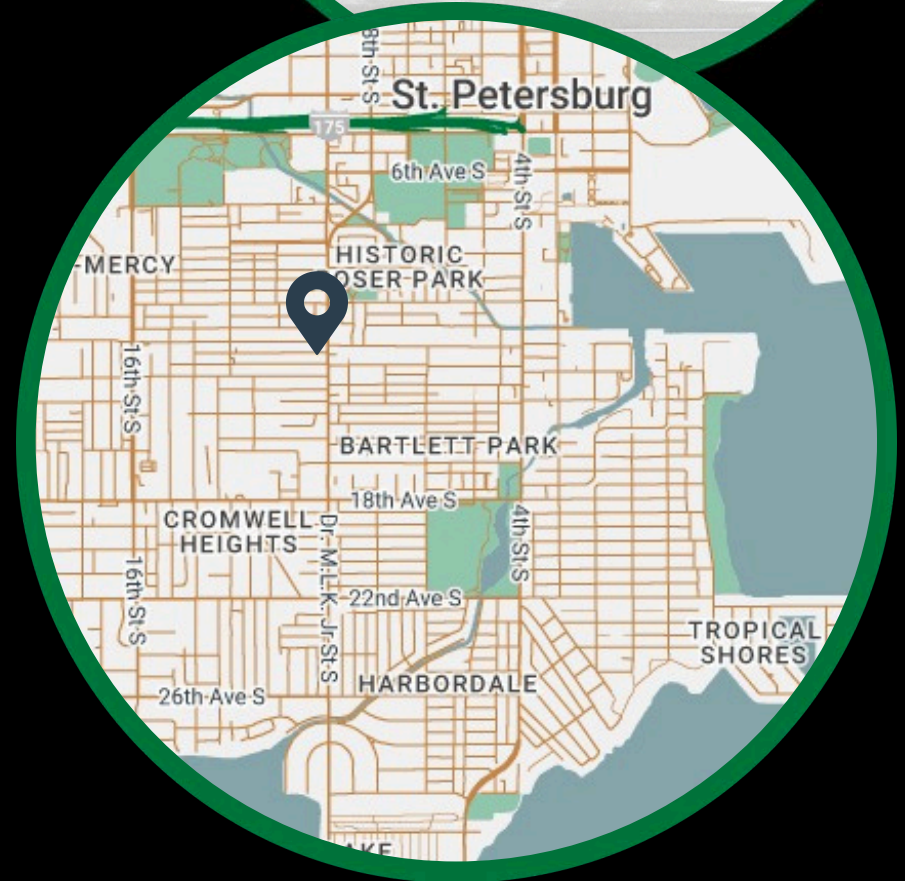
Suitable for: Live/Work, Restaurant, Gym, Church, Office and more!



Potential for expansion with additional parking



A mile from the core of Downtown St. Pete









# Near By Developments

HEALTHY ROOTS GARDEN & COMMUNITY CENTER



WIMBISH COURT



Exciting growth is underway nearby, bringing new energy and opportunity to the area.

**Healthy Roots Garden & Community Center** will feature a Food Farmacy, Tech & Innovation Hub, and community wellness programs designed to enrich local quality of life.

Just blocks away, **Wimbish Court**, an 82-unit affordable housing community, will add residents and economic activity, supporting long-term neighborhood growth.

These developments enhance visibility, accessibility, and value for nearby properties, positioning this site for strong future demand.

# Demographics



## DEMOGRAPHIC SUMMARY

1327 Dr Martin Luther King Jr St S, Saint Petersburg, Florida, 33705  
Drive time of 10 minutes

### KEY FACTS

136,264

Population

43.6

Median Age

64,067

Households

\$56,841

Median Disposable Income

### EDUCATION

6.0%

No High School Diploma



25.6%

High School Graduate



27.0%

Some College/  
Associate's Degree



41.4%

Bachelor's/Grad/  
Prof Degree

### INCOME



\$67,762

Median Household Income



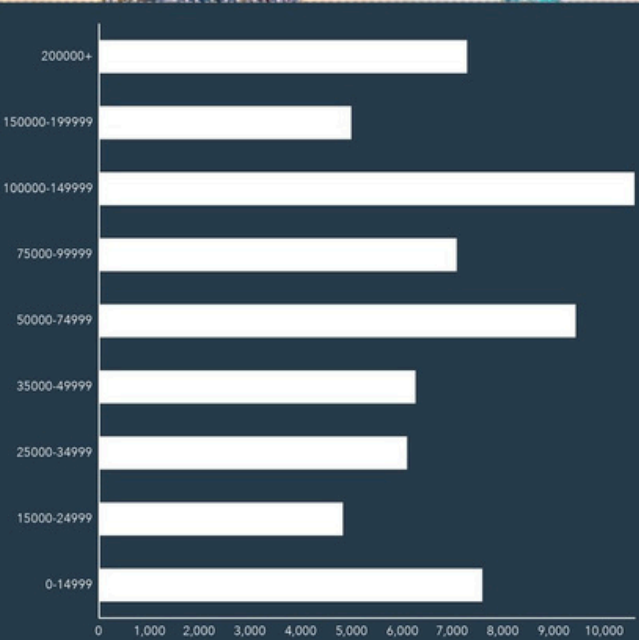
\$48,978

Per Capita Income

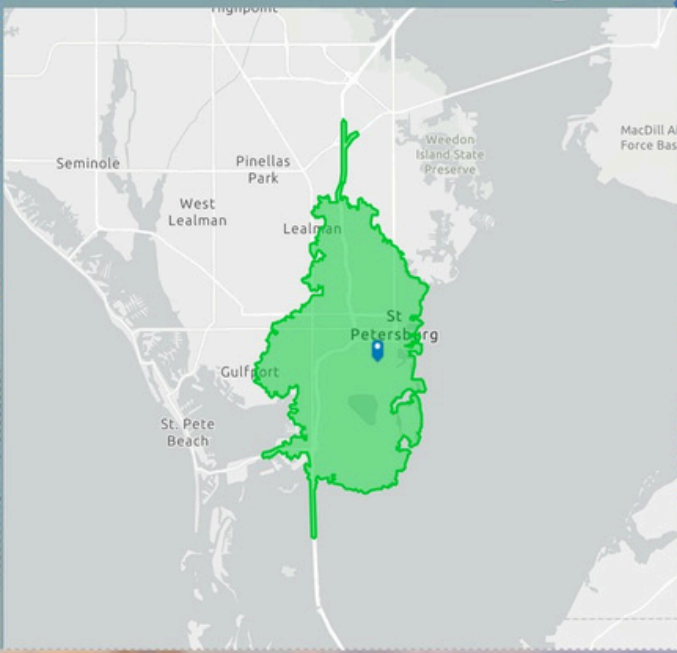


\$119,134

Median Net Worth



HOUSEHOLD INCOME



### EMPLOYMENT



White Collar

70.2%



Blue Collar

15.2%



Services

19.5%

4.5%

Unemployment Rate

Source: This infographic contains data provided by Esri (2024, 2029). © 2025 Esri

# Listing Team



Jay Billings  
Retail Specialist  
Jay@cprteam.com  
(636) 219-9156



Harrison Gault  
Retail Specialist  
Harrison@cprteam.com  
(727) 677-8070



[www.cprteam.com](http://www.cprteam.com)



[727-822-4715](tel:727-822-4715)



[Commercial Partners Realty](#)